

HM1 product information sheet

Product Specifications

Fits: 13" - 37" flat panel TVs

Supports up to: 80 lbs (36.3 kg)

Swivel: 360°

VESA compliant: 100x100 to 200x200

Warranty: 5 years

Color: Black

Product Benefits

- Can be installed through surface with included retention ring, or on surface with screws or adhesive (screws and adhesive not included)
- VESA mounting plate includes center cut-outs designed to accommodate panels with varying connection locations
- Swivel base for optimum viewing angle
- Adjustable swivel stops at 0°, 45° or 90° in one or both directions to prevent wall or wire damage
- Integrated cable management hides wires from panel through mounting plate
- VESA mounting plate has numerous 8mm holes for greater panel compatibility and choice in panel placement
- Security hardware prevents tampering or theft
- Padlock compatible for additional security (padlock not included)
- Delrin™ bearings for smooth rotation
- Media device or optional security box can mount directly to back of VESA mounting plate
- Quick install ideal for high-volume jobs
- Small footprint and self-concealing hardware for a clean appearance
- Included hardware fits any surface thickness (0.5" to 3.5")
- 4" retention collar for additional height available as an accessory
- Complete Grade 5 hardware kit



Padlock compatible



Adjustable swivel



Center cut-outs

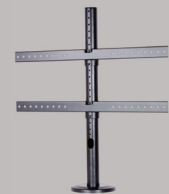
Hospitality Products



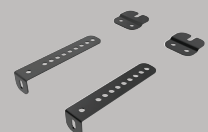
HM1



HM2



HM3



HMSK1

Dedicated to being a one-stop-shop for professional products, OmniMount remains on the cutting edge of product innovation. That's why we're the natural choice for any professional, industrial, or commercial application. With over 30 years experience in mounting solutions, OmniMount has the expertise and experience required to offer smart and functional products targeted specifically to the hospitality market. The HM1 is a flat panel furniture mount that offers quality construction, built-in security and ease of installation for flat panels up to 37".



Dedicated to being a one-stop-shop for professional products, OmniMount remains on the cutting edge of product innovation. That's why we're the natural choice for any professional, industrial, or commercial application. With over 30 years experience in mounting solutions, OmniMount has the expertise and experience required to offer smart and functional products targeted specifically to the hospitality market. The HM1 is a flat panel furniture mount that offers quality construction, built-in security and ease of installation for flat panels up to 37".

Product Specifications

Fits: 13" - 37" flat panel TVs

Supports up to: 80 lbs (36.3 kg)

Swivel: 360°

VESA compliant: 100x100 to 200x200

Warranty: 5 years

Color: Black

Product Benefits

- Can be installed through surface with included retention ring, or on surface with screws or adhesive (screws and adhesive not included)
- VESA mounting plate includes center cut-outs designed to accommodate panels with varying connection locations
- Swivel base for optimum viewing angle
- Adjustable swivel stops at 0°, 45° or 90° in one or both directions to prevent wall or wire damage
- Integrated cable management hides wires from panel through mounting plate
- VESA mounting plate has numerous 8mm holes for greater panel compatibility and choice in panel placement
- Security hardware prevents tampering or theft
- Padlock compatible for additional security (padlock not included)
- Delrin™ bearings for smooth rotation
- Media device or optional security box can mount directly to back of VESA mounting plate
- Quick install ideal for high-volume jobs
- Small footprint and self-concealing hardware for a clean appearance
- Included hardware fits any surface thickness (0.5" to 3.5")
- 4" retention collar for additional height available as an accessory
- Complete Grade 5 hardware kit

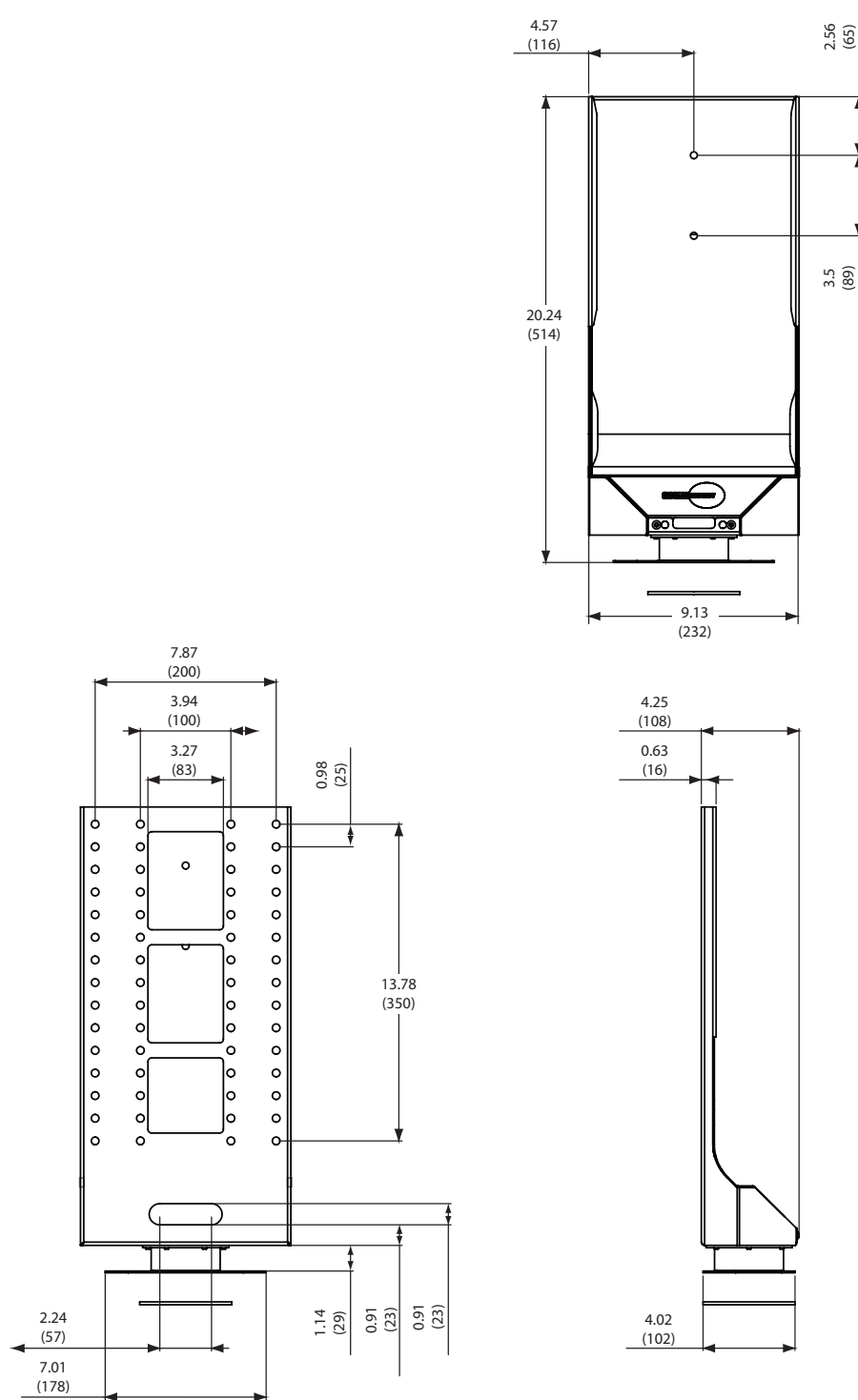


	Stock Code	Packaging UPC	MC UPC
Americas	1004768-1	72891025754	728901719202
International	NA	NA	NA

	Dimensions WxDxH inches (mm)	Wt lbs (kg)
Product Box	12.6 x 21.8 x 5.7 (320x554x148)	11.9 (5.4)
Master Carton	13.6 x 22.6 x 12.4 (345x574x315)	24.9 (11.3)

Box Contents	Qty
Monitor plate	1
Cover assembly	1
Rotation stop	1
Retaining assembly	1
Bushing	2

Box Contents	Qty
Rotator assembly	1
Stator assembly	1
Threaded receiver	1
Complete panel attachment hardware kit	1
Complete Grade 5 hardware kit	1
Instructional manual	1



inches (mm)