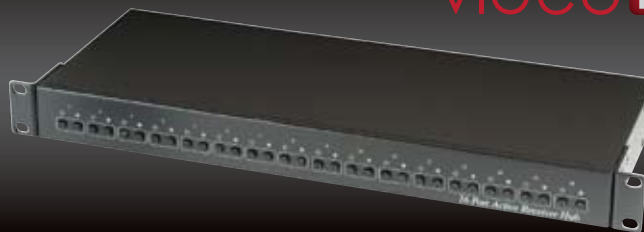


GV-TPCI6VPR

16 Port UTP Active Hub

video PLUS™



Dimensions (unit : in)

Front/Rear Panel



Specifications

| | |
|-----------------------------------|--|
| Video Input Port | 16 Port (Terminal Block) |
| Video Output Port (BNC Connector) | 16 Port, 1Vp-p, 75 ohms |
| Power Input | DC12V |
| Power Consumption | 500mA |
| Recommend Cable | CAT 5 Cable 4 Pairs (24 AWG) |
| Power Adapter | Included |
| Dimension (W x H x D) | 19 x 6.69 x 1.73 in / 482 x 170 x 44 mm (1U) |
| Weight | 6 lbs / 2.72 kg |
| Material | Metal Black |
| Operating Temperature | 32°F ~ 104°F (0°C ~ 40°C) |

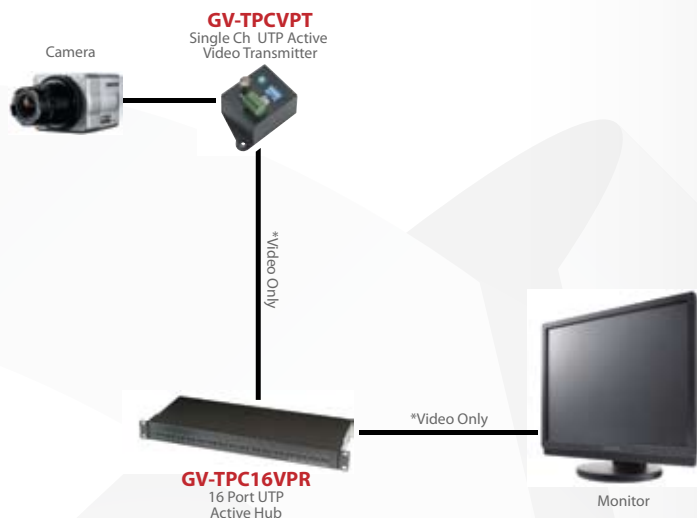
Summary

The GV-TPCI6VPR is a multiport active video hub which can be installed in one compact 19" wide 1U panel. Panels can reside in the same rack as other equipment, such as switchers, multiplexers, DVR, video conferencing equipment, etc. They are perfect for larger CCTV installations and ideal for security monitoring stations.

Features

- Transmit a full motion color or monochrome video signal over cost effective UTP cable.
 - Built in 16 port TTA111VR active receivers in 1U 19" rack mounting panel.
 - Easy setting with 2 adjustments for color gain and brightness.
 - Highly balanced mode of video transmission for extra interference immunity.
 - Built in transient protection and ground lifting.
 - Working range: 2000 feet (600 meters) when working with passive video balun, up to 4920 feet (1500 meters) when working with UTP active transmitter GV-TPCVPT.
 - Power supply included.
- Please note that no surge suppression component can protect against all transient voltage spikes

System Configuration



Multiple Camera Configuration

