

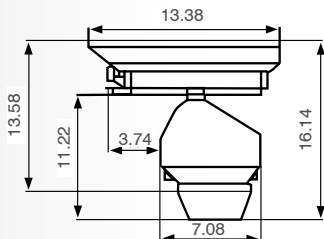
GV-SCS530

Integrated PTZ Positioning System, 36x Optical Zoom, WDR, D/N, Indoor, Outdoor Camera



Dimensions (unit : in)

Front/Rear Panel



Summary

The "Smart Camera System" GV-SCS530 is a high-performance, integrated positioning system featuring a 530TV Lines resolution, 36x optical zoom camera, lens and complete PTZ unit. Made from die-cast aluminum construction, with an IP66 rated weather-resistant design. The GV-SCS530 has a built-in heater, wiper, window defroster, sun-shield, anti-fogging, dust-proof and frost protection function. It can withstand high winds, offers complete 360-degree panning with tilt ranges of +33 degrees and -83 degrees from the horizontal. What's more, the camera is equipped with a number of convenient functions such as Spherical Privacy Zone Masking with Mosaic Effect, Video Motion Detection, Multi-Line On-Screen Display, E-flip, and Picture Freeze. The GV-SCS530 is also compatible with many popular control protocols.

Features

- 1/4 Inch type ExView HAD CCD
- 530TV Lines Resolution
- Minimum Scene Illumination: 1.4 lux @ 1/60s shutter speed, 0.1 lux @ 1/4s shutter speed
- 36x Optical Zoom (12x Digital zoom, 432x total)
- True Day/Night with IR Filter Removal
- Wide Dynamic Range
- E-flip
- Picture Freeze
- Advanced Spherical Privacy Zone Masking Function with Mosaic Effect
- Video Motion Detection
- Multi Line On-Screen Display
- Electronic shutter / slow shutter
- Internal / External synch (V-lock)
- Die-cast Aluminum construction, high temperature resistant
- Weather resistant, dust proof design, protection grade IP66
- 360° continuous panning
- Tilt range +33°~80°
- Auto pan function between 2 presets
- 128 presets 6 tracks
- Anti fogging and frost protection function
- Wiper
- Factory presets
- Register set command
- RoHS-compliant
- Multi Protocol Control
- Included Wall Mount

36x Optical Zoom

The camera uses a 36X optical (3.4 ~ 122.4mm) motorized zoom lens, along with the 12X digital zoom, resulting in 432X zooming capability.



Wide Dynamic Range (WDR)

WDR utilizes high shutter speed in bright areas and low shutter speed in dark areas increasing the range of luminance.



SAMSUNG

SAMSUNG | GVI Security • Toll Free: 888-595-2288 • Fax: 972-245-7333

This product specifications and manual are also available in pdf format at www.gviss.com
The information is subject to change without notice • v2.6.09

GVI Security