

FDW75

FusionDome



With its attractive design and compact size, Videolarm's FusionDome offers versatility and added protection to your video surveillance system. Compatible with most of today's leading IP and analog camera manufacturers, the FusionDome is constructed out of a durable engineered plastic top, 94VO UV protected, and includes an enhanced optical dome. To better meet the demands of your particular surveillance application, the FusionDome is available with several unique options: pendant or wall mount, 12Vdc input, heater / blower, fixed or PTZ camera bracket, and more.

- *Universal mounting plate accepts most IP network and Analog camera systems*
- *Enhanced optically clear lower dome for increased visibility*
- *Durable engineered plastic top, 94VO UV protected*
- *Thermostatically controlled 12Vdc or 24Vac heater and surge protection (outdoor models only)*
- *Integrated wall mount standard; pendant mount available (1½" pipe thread).*
- *Available with Videolarm S-View PTZ camera system or Q-View multiple camera system*

FDW75

Outdoor *and* Indoor models for *both* Fixed *and* PTZ cameras:

Outdoor Model for PTZ Camera:

FDW75C2N: IP Network Ready 7" Outdoor dome hsg w/wall mount, clear polycarbonate dome, w/24Vac input, heater/blower, for an IP Network PTZ camera, 120 to 24Vac transformer

Outdoor Model for Fixed Camera:

FDW75CF2N: IP Network Ready 7" Outdoor dome hsg w/wall mount, clear polycarbonate dome, w/24Vac input, heater/blower, for an IP fixed camera, 120 to 24Vac transformer

Outdoor Model for PTZ Camera with 12Vdc input:

FDW75C12N: IP Network Ready 7" Outdoor dome housing w/wall mount, clear dome, 12Vdc input (ideal for solar and battery powered applications), heater/blower, 22vA, for an IP Network PTZ camera

Indoor Model for PTZ Camera:

IFDP75TN: IP Network Ready 7" Indoor dome hsg w/pendant mount, tinted dome, for an IP Network PTZ camera, no electronics.

Indoor Model for Fixed Camera:

IFDP75TF: IP Network Ready 7" Indoor dome hsg w/pendant mount, tinted dome, for an IP Network fixed camera, no electronics



Wall Mounts and Pendant Mounts available Change:

"W" - Wall Mount or
"P" - Pendant Mount

Tinted and Clear Domes available Change:
"C" - Clear or "T" - Tinted

SView PTZ and Q-View Multiple Camera Systems Available.

Mounting brackets are included and can accommodate most of today's popular cameras.

To view an up-to-date listing of compatible cameras please visit www.videolarm.com/thirdparty.jsp

PTZ Compatible Cameras:

ACTi: CAM-6500

Axis: 213, 214, 215, 231D, 232D, 233D*

Canon: VB-C50iR, VC-C50iR, VC-C4R

DLink: DCS 6600 Series, DCS 5000 Series

Elmo: PTC-401C IP, PTC-400C, PTC-400C, PTC-200C

JVC: VN-C30U, VN-C625U, VN-C655U, TK-625U

Panasonic: BB-HCM381, WV-NS202, KX-HCM280A, BB-HCE481A, BB-HCM580A, BB-HCM581A

PIXORD: 261, 262, 263

Sony: SNC-RZ25, SNC-RZ30, SNC-RZ50

Toshiba: IK-WB21A

Vivotek: PZ6112

* To fully support the high zoom feature of the Axis 233D camera, Videolarm has created two special housings with an optically clear acrylic dome – FDW75C2N/AC & IFDP75CN/AC

Fixed Cameras:

Accepts camera and lens up to 7.5" in length.

Optional Components and Accessories:



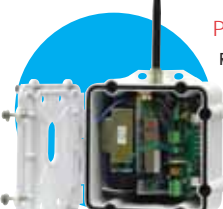
PB24

Rugged cast aluminum power box with 84vA and 24vA power supply



PB24BB

Rugged cast aluminum power box PB24 plus battery backup. Provides up to 25 minutes of extended power.



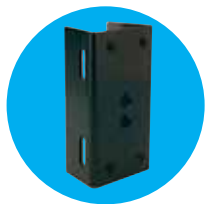
PB24L24

Rugged outdoor wireless box, 220/110vac input and 24vac output for camera



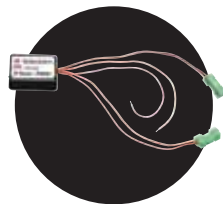
WM20G

Aluminum gooseneck wall bracket, includes 1 1/2" NPT



APM3

Aluminum pole mount bracket with female inserts



IPRS01

Automatic IP camera restart



PRM50G

Heavy-duty aluminum parapet mount bracket with 20" extension



WM30G

Aluminum parapet mount bracket, includes 1 1/2" NPT

SSY7

Sunshield for RH7 or FusionDome FD7 housing



KFL24

Red flashing light kit for the FDW75 and RHW75 series dome housings, 35,000 hour LEDs

Mechanical Specifications

Size:	14.7" x 8.2" x 14.5" (h*w*d) (374 x 208 x 369mm)
Weight:	11 lbs/ 5kg
Construction	Top: 3mm engineered plastic
	Dome: Polycarbonate
Mount Bracket:	Machined & cast aluminum

Electrical Specifications

Power requirements:

<i>Dome 24vac model:</i>	24vac 55watts (H/B 27 watts)
<i>Dome 12vdc model:</i>	12vdc, 50 watts (includes 20 watts for heater)

Environmental Specifications

Operating Temperature:	-20° F to 120° F (-29° C to + 49° C)
-------------------------------	---

Shipping Specifications

Model	Shipping Weight	Box Dimensions
FDW75	11 lbs	17 x 14 x 17

Certifications and Ratings



UL Listed

WEEE

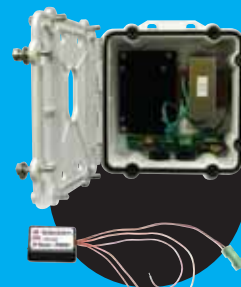
CE

RoHS

PB24 Power Box with IP Reset option:

Videolarm's innovative IP Reset provides a systematic solution for resetting IP cameras from lockups caused by network issues, wiring problems and power fluctuations.

This simple, yet effective procedure saves you from costly service calls and camera/surveillance downtime.



PB24-RS

PB24 Power Box plus Automatic IP camera restart



PB24BB-RS

PB24BB Power Box with Battery Backup plus Automatic IP camera restart

For full product specs, go to www.videolarm.com and use the search engine to navigate to a specific product page.