



EverFocus[®]

Connecting Peace of Mind



EverFocus®

Connecting Peace of Mind



About EverFocus

EverFocus has been in business in the United States for over 17 years. Starting out as a simple CCTV manufacturer EverFocus has grown into a full Systems & Solutions Provider with 8 locations worldwide. EverFocus' goal is also our tag line, "Connecting Peace of Mind." EverFocus has dedicated teams designed for system and product consultation. EverFocus also has a network of companies that we partner with to help provide the best experience possible for our customers.

Product Solutions

EverFocus offers a full line of High Definition IP solutions for viewing and recording in HD. Feature filled software solutions are now available to keep you connected so you can fully experience peace of mind. EverFocus also provides a full line of HDcctv products, Analog Cameras & DVRs, NVRs, Mobile Solutions, Specialty Cameras, Monitors, Power supplies and Lenses.

Product & System Customization

EverFocus offers many solutions that fit our customer's needs right out of the box. Every customer is not the same and may have very specific needs for specialized applications. As a manufacturer, EverFocus can make unique customizations to our product line, providing you with the solutions necessary. We have a complete R & D team that will assist in providing hardware or software solutions that will fit your needs.

Dedicated System & Solutions Team

We have a dedicated systems and solutions team offering decades of experience to assist you in identifying your particular needs. We will work along side you and your team helping to provide solutions for safety, security and surveillance requirements. We work closely with all parties involved to assure your complete satisfaction. EverFocus, bringing you peace of mind.



Notice: ©2012 EverFocus Electronics Corp. All rights reserved. EverFocus® Paragon™ NeVio™ and Polestar™ are registered trademarks of EverFocus Electronics Corp. Product features and specifications are subject to change without notice. No parts or contents of this catalog may be reproduced or transmitted in any form or by any means without permission from EverFocus. Safari®, iPhone®, iPad® iTunes® are registered trademarks of Apple® Inc. Android TM is a registered trademark of Google® Inc. Blackberry® is a registered trademark of RIM® All other trademarks are property of their respective owners.

- Not all models featured are available in all countries. For accessories and other product information, please visit www.everfocus.com and select your country.
- Safety Precaution: Please read all operating instructions and installation manuals carefully before using all products. EverFocus is not responsible for network performance and/or other manufacturers' products(s) that reside on the network.
- All product weights and dimensions are approximate
- All products may be subject to export control regulations.
- All product photographs were taken for explanation purposes. Actual images may differ.



Name	ENVS			ELITE				COMMANDER
Part Number	ENVS800/2TB ENVS800/4TB	ENVS1600/2TB ENVS1600/4TB	ENVS3200/4TB	NVR-202/2T NVR-202/4T	NVR-204/2T NVR-204/4T	NVR-208/4T	NVR-216/4T NVR-216/8T	NVR-4000/4T NVR-4000/8T NVR-4000/12T
Channels	8	16	32	2	4	8	16	64
View Mode	1/4/6/9/10/13/16/25/36			1/4/5/10/13/16/17				
Recording Modes	Continuous record, record by schedule, event trigger record, digital input trigger record							
OS	Compitable with Windows XP/Vista/7 (32/64 bit)			Embedded Linux				
Recording Resolution	Dependent on Camera							
Compression Supported	H.264/MPEG-4/M-JPEG			H.264/MPEG-4/M-JPEG, MxPEG (depends on IP camera)				H.264, MPEG4, MJPEG
Audio	Bi-directional transmission, 1 audio channel per video channel (depending on specification of IP device)							
Video Storage (Excludes O/S and system software on HDD 1)	2 TB (8 and 16 channel), 4 TB (32 channel)			up to 4TB		up to 8TB		up to 12TB
Internal HDD	Up to three 3.5" HDD SATA (1 system drive, 2 recording drives)			2 SATA II HDD bay		4 SATA II HDD bay		4 x SATA II removable HDD trays
Video Export	USB 2.0 interface or to network drive 1x e-sata port			n/a				6 x USB 2.0 (for mouse, UPS); 1 x eSATA (for DAS)
Network Interface	1 Gigabit/s, RJ45, IEEE 802.3			2 Gigabit RJ45 Ethernet Port.				
Other Interface	Six USB 2.0, PS2 keyboard/mouse; optional EKB200 joystick			2 USB 2.0 (on back panel)		2 USB 2.0 (on back panel) 1x e-sata port		
Max Client Limit	Live View 128 Streams			Live View 64 Streams				Live View 128 Steams
Alarm I/O	Support of I/O contacts of connected IP devices (depending on specification of IP device)			Dependent on supported camera				
Event Trigger	Yes							
Monitor Output	1x VGA out, 1x DVI out, 1x HDMI out*			n/a				1x VGA
Notification	Dependent on supported camera "On Screen Display" for event notification, Trigger alarm output , send email notification							
E-Map	Unlimited number of maps or other graphics with free placement of camera or I/O icons			Support E-map with device indicator				
Bandwidth Monitor	Optional*			n/a				
Database Management	Yes*			n/a				
Video Analytics	General motion, missing object, camera occlusion, foreign object, loss of focus, signal lost; each alarm can trigger up to 10 different event reactions			General Motion, missing object, camera occlusion, foreign object, loss of focus, signal lost				General Motion, signal loss, alarm notification
PTZ	PTZ control in OSD or with EKB200 for PTZ cameras. Digital software PTZ for all cameras			PTZ Control of supported cameras				Digital and Optical PTZ
Recording Rate	1-30 FPS adjustable for each camera (depending on camera capabilities)			Max. 40Mbps, 60FPS @ 1.3M (NVR-202), Max. 40Mbps, 120FPS @ 1.3M (NVR-204)		Max. 80Mbps, 240 FPS @ 1.3M (NVR-204)		250 Mbps (max) 156 MBps (optimal)
Mult-Channel Playback	Up to 16 channels time synchronized			Up to 2 / 4 channels time synchronized		Up to 8 / 16 channels time synchronized		Up to 100 Ch Playback if setup with Main/Sub Server
Search Function	Time/Date via calendar and time bar- Intelligent search with modes: general motion, missing object, camera occlusion, foreign object, signal lost							Intelligent Search
Video Enhancement	Saturation, contrast, brightness, sharpness							
Video Export 2	Snapshot in JPEG format, video export in AVI or ASF format							
Video Backup	Backup of multiple camera video data to local/ network video drive or external CD/DVD			Backup of multiple camera video data to local/network video drive or Auto backup to FTP server				
Remote Video Access Method	·Remote client software live view (up to 2 windows/monitors with up to 16x view each at 1 PC) ·Remote client software playback view (up to 16x view) with remote backup function (multiple channel backup up to 16 channels) ·Web browser view (live/playback with up to 16x view) ·Mobile phone client (3G/RTSP - streaming support required) ·No limit for number of installations for all remote applications							Remote Client Software, Mobile Phone Client, Web Browser
Remote Maintenance	Remote desktop viewer allows complete network access to ENVS server (1 monitor display only supported) including configuration			Web interface configuration using Internet Explorer 7 or above				
Remote Live View Control	Live view, preset/go, PTZ, remote I/O, snapshot, multi-view, digital PTZ, advanced E-map, bandwidth monitoring							
Power	100-240VAC							
Power Consumption	300W			40W max				200W
Temperature	32°F~104°F							
Housing	Low profile PC type			Compact				1U Rack Mount
Dimensions	16.3" x 12.9" x 3.4"			5.51" x 4.29" x 8.62"		5.51" x 7.16" x 8.62"		44.5 x 441 x 428.8 mm
Weight	15 lbs			4.67lbs		6.55lbs		13.75 lbs
Certifications	CE, FCC							

Video Servers



EVS200A | EVS200AW

- High quality H.264/MPEG-4 and MJPEG multi-stream output at 4CIF resolution at 60 FPS
- Dual stream (per channel) for simultaneous live monitoring and high resolution recording
- Smart Wizard setting for varies event and schedule recording
- Built-in SD memory card slot for local storage
- Supports SD high capacity
- Space saving with ultra compact design



MobileFocus Available for Download in the App Store - iPhone/Android/Blackberry



EVS410

- High quality H.264/ and M-JPEG
- Supports SD high capacity
- Dual stream (per channel) for simultaneous live monitoring and high resolution recording
- Smart Wizard setting for varies event and schedule recording
- Built-in SD memory card slot for local storage
- Space saving with ultra compact design

NVRs & Video Servers



EDN Plus Series



EDN3160

- 1.3 Megapixel + Wide Dynamic
- IR Day/Night, Auto Iris 3-9mm
- 3-Axis Dome
- Flush or Surface Mount Design

EDN3260

- 2 Megapixel + Wide Dynamic
- IR Day/Night, Auto Iris 3-9mm
- 3-Axis Dome
- Flush or Surface Mount Design

EDN3340

- 3 Megapixel
- IR Day/Night, Auto Iris 3-9mm
- 3-Axis Dome
- Flush or Surface Mount Design

EHN Plus Series



EHN3160

- 1.3 Megapixel + Wide Dynamic
- IR Day/Night, Auto Iris 3-9mm
- 3-Axis & Vandal Resistant
- IP66 Weather Resistant

EHN3260

- 2 Megapixel + Wide Dynamic
- IR Day/Night, Auto Iris 3-9mm
- 3-Axis & Vandal Resistant
- IP66 Weather Resistant

EHN3340

- 3 Megapixel
- IR Day/Night, Auto Iris 3-9mm
- 3-Axis & Vandal Resistant
- IP66 Weather Resistant

EZN Plus Series



EZN3160

- 1.3 Megapixel + Wide Dynamic
- IR Day/Night, Auto Iris 2.8-10mm
- Vandal Resistant Housing
- IP66 Weather Resistant

EZN3260

- 2 Megapixel + Wide Dynamic
- IR Day/Night, Auto Iris 2.8-10mm
- Vandal Resistant Housing
- IP66 Weather Resistant

EZN3340

- 3 Megapixel
- IR Day/Night, Auto Iris 2.8-10mm
- Vandal Resistant Housing
- IP66 Weather Resistant

Part Number	EDN3160	EDN3260	EDN3340	EHN3160	EHN3260	EHN3340	EZN3160	EZN3260	EZN3340
Pickup Device with Progressive Scan CMOS Sensor	1/3" Full HD		1/2.8" HD	1/3" Full HD		1/2.8" HD	1/3" Full HD		1/2.8" HD
Effective Pixels & Video Resolution	1280 x 1024	1920 x 1080	2048 x 1536	1280 x 1024	1920 x 1080	2048 x 1536	1280 x 1024	1920 x 1080	2048 x 1536
Sensitivity	0 Lux @ F1.2 (IR On)			0 Lux @ F1.2 (IR On)			0 Lux @ F1.3 (IR On)		
Day/Night	Built-in Auto IR cut filter			Built-in Auto IR cut filter			Built-in Auto IR cut filter		
Lens	Auto Iris, 3-9mm, F1.2- F2.3 P-IRIS			Auto Iris, 3-9mm, F1.2- F2.3 P-IRIS			Auto Iris, 2.8-10mm, F1.3, 19		
Video Output	BNC socket, composite 1Vp-p/75ohm For cameras Set-up and test only								
Video Compression	H.264/MJPEG								
Frame Rate	720p @ 30 FPS	1080p @ 30 FPS	2048 x 1536@ 15 fps, 1920 x 1080@ 30fps	720p @ 30 FPS	1080p @ 30 FPS	2048 x 1536@ 15 fps, 1920 x 1080 @ 30fps	720p @ 30 FPS	1080p @ 30 FPS	2048 x 1536@ 15 fps, 1920 x 1080@ 30fps
Image Setting	Compression, brightness, sharpness, white balance, exposure control backlight compensation, image rotation & mirroring, text and image overlay								
Video Streaming	Multi-Stream H.264 and M-JPEG								
Interface	10Base-T/100Base-TX auto-negotiation, RJ-45 socket. Supports MDI/MDI-X auto cross function								
Supported Protocols	TCP/IP, IPV6, UDP, ICMP, DHCP, NTP, DNS, DDNS,SMTP, SNMP, FTP, HTTP, HTTPS, PPPoE, UPnP, Bonjour, RTP, RTSP, RTCP, UDP, IGMP, ICMP, ARP, ONVIF, PSIA								
Power Over Ethernet	Yes (PoE 802.3af)								
Alarm Input	1								
Alarm Output	1								
Audio In/Out	Yes*								
Event Trigger	Alarm Input, Manual Trigger, Motion Detection, Schedule Recording								
Notification	Trigger alarm output, email notification, upload video to FTP, record video to PC and network alarm								
Pre/Post Alarm Buffer	5 Seconds								
SD Card	Supports micro SDHC for onboard event storage								
Power Supply	12VDC & PoE								
Power Consumption	12VDC 7.44W (IR LEDS on) POE 8.45W (IR LEDs on)			12VDC 10.8W (IR LEDS on) POE 12.28W (IR LEDs on)			8W (IR LEDS on)		
Weight	2.38 lbs			3.57 lbs			3.57 lbs		
Dimension	Flush Mount: 4.61" x 4.29" Surface Mount : 5.6" x 5.23"			6.5" x 5.4"			14.16" x 3.76" x 3.76"		
Operating Temp	-32°F - 122°F			-40°C- 55°C/ -40°F - 131°F (12VDC), -20°C- 55°C/ -4°F - 131°F (PoE)					
Humidity	20%-80% non-condensing			IP66					
Rating	Indoor			IP66 Weather Resistant Vandal Proof					
Support	ONVIF, PSIA								
Certifications	CE, FCC								



EDN800

Indoor Day/Night Dome

- Auto-Iris 3.7-12mm
- 3-Axis & Vandal Resistant



EDN850H

Outdoor True Day/Night Dome

- Auto Iris, 2.8-10mm
- 3-Axis & Vandal Resistant
- IP66 Weather Resistant



EHN3200

2 MP Outdoor Day/Night Dome

- Auto Iris, 2.8-10mm
- 3-Axis & Vandal Resistant
- IP66 Weather Resistant



EPN4220
2 Megapixel
IP PTZ
Call for Availability



EDN3240

2 MP Indoor Day/Night

- 2.8-10mm Varifocal
- IR Day/Night
- 3-Axis Dome
- Flush or Surface Mount



EZN3240

2 MP Day/Night Bullet

- 2.8-10mm Varifocal
- IR Day/Night
- IP66 Weather Resistant
- Speedy Mount Ring



EZN850

Outdoor True Day/Night Bullet

- 6-50mm Lens
- IR Day/Night
- IP66 Weather Resistant



IP Cameras



IP Plus Series

EAN800A

Day/Night

- Multi-Streaming
- Accepts C/CS Lenses (lenses not included)

EAN850A

True Day/Night IP Box Cam

- Multi-Streaming
- Accepts C/CS Lenses (lenses not included)

EAN900

1.3 Megapixel Day/Night

- Multi-Streaming
- Accepts C/CS Lenses (lenses not included)

EAN3120

1.3 Megapixel + Wide Dynamic Range

- True Day/Night, Multi-Streaming
- Accepts C/CS Lenses (lenses not included)

EAN3220

2 Megapixel + Wide Dynamic Range

- True Day/Night, Multi-Streaming
- Accepts C/CS Lenses (lenses not included)

EAN3300

3 Megapixel Box Camera

- True Day/Night, Multi-Streaming
- Accepts C/CS Lenses (lenses not included)

IP Cameras



EPN4220 outdoor EPN4220i indoor Day/Night IP PTZ

- True Day/Night function
- Low luminance for improved image quality at night
- WDR to improve images under extreme lighting conditions
- Digital Slow Shutter (DSS)
- Motion Detection function
- Digital auto flip
- Programmable auto panning
- Smart alarm reaction & resume after alarm

- "Snap & lock" easy installation
- IP66 weather resistant rating means that it will withstand the elements of outdoor conditions
- Power Supply Included

Part Number	EAN800A	EAN850A	EAN900	EAN3120	EAN3220	EAN3300
Pickup Device	1/4" Sony Ex-View HAD CCD	1/3" Sony Super HAD Interlaced CCD	1/3" Progressive scan CMOS 1.3 Megapixel	1/3" Full HD Progressive scan CMOS sensor		1/2.8" HD Progressive scan CMOS sensor
Effective Pixels	NTSC: 768 (H) x 494 (V)/ PAL: 752 (H) x 582 (V)		1280 (H) x 1024 (V)			
Sensitivity	0.4 Lux/F=1.2	0.002 Lux/F=1.2 (SENS-UP x128), 0.25 Lux/F=1.2	0.5 Lux/F=1.2	0.03 Lux/F=1.4		0.08 B/W or 0.6 Color Lux/F=1.2
Day/Night	Yes	True Day/Night w/ IR cut filter	Yes with ICR module	Built-in Auto IR cut filter		
Lens	Optional C/CS mount, manual/DD control supported	C/CS mount, manual/DD control supported	Optional C/CS mount, manual/DD control supported	C/CS mount (adaptor included for C-mount)		
Video Output	BNC socket, composite 1.0Vp-p/75 ohm					
Video Resolution	NTSC: 4CIF (704X480), VGA (640X480), CIF (352X240), QVGA(320X240), QCIF(176X144)		NTSC : SXGA (1280X1024), SWXGA (1280 X960), 720P (1280x720), VGA (640x480)	1280 x 1024	1920 x 1080	2048 x 1536
Video Compression	H.264/MPEG4/M-JPEG			H.264/M-JPEG		
Video Quality	8 levels adjustable					
Frame Rate	up to 30 FPS at 4CIF		up to 15 FPS in 1280x1024	30 FPS		2048 x 1536 @ 15 fps, 1920 x 1080 @ 30 fps
Image Setting				Compression, brightness, sharpness, white balance, exposure control backlight compensation, image rotation & mirroring, text and image overlay		
Interface	10Base-T/100Base-TX auto-negotiation, RJ-45 socket. Supports MDI/MDI-X auto cross function					
Supported Protocols	Built-in IEEE 802.11b/g WLAN (EAN800AW) HTTP, TCP/IP, UDP, RTP, RTSP, FTP, SMTP, DHCP, DNS, DDNS, NTP, RTSP	HTTP, TCP/IP, FTP, SMTP, DHCP, DNS, DDNS, NTP, RTSP		TCP/IP, IPV6, UDP, ICMP, DHCP, NTP, DNS, DDNS,SMTP, SNMP, FTP, HTTP, HTTPS, PPPoE, UPnP, Bonjour, RTP, RTSP, RTCP, UDP, IGMP, ICMP, ARP, ONVIF, PSIA		
Bandwidth Control	Min. 64 k bit per sec. adjustable					
Max Client Limit	32 clients simultaneously					
Power Over Ethernet	Yes (PoE 802.3af)					
Alarm Input	1					
Alarm Output	1					
Audio In/Out	3.5mm stereo line input/ line out	3.5mm mono line input/ line out		Two way audio, 3.5mm mono line input/line out Compression G.711		
Compression	n/a					
Event Trigger	Alarm Input, Manual Trigger, Motion Detection and Schedule Recording			Alarm Input, Manual Trigger, Motion Detection, Schedule Recording		
Notification	Trigger alarm output, email notification, upload video to FTP, record video to SD card, record video to PC and network alarm			Trigger alarm output, email notification, upload video to FTP, record video to PC and network alarm		
Pre/Post Alarm Buffer	48MB RAM reserved for pre-alarm (record up to 120 sec.)					
SD Card	Supports SD and SDHC for local storage			Supports SDHC Host Specification	Supports micro SDHC for onboard even storage	
Power Supply	12VDC & PoE					
Power Consumption	5W max (12VDC for EAN800A) 6.5W max (12VDC for EAN800AW)	5W max. (12VDC)	4.5W max. (12VDC)	6W max.		
Weight	1.102 lbs	1.2 lbs	1.21 lbs	410g		
Dimension	5.35" x 2.72" x 2.22"		5.35" x 2.72" 2.22"	4.6" x 2.2" x 2.6"		
Operating Temp	0°C- 40°C/ 32°F - 104°F			0°C- 50°C/ 32°F - 122°F		
Humidity	<90% not condensing			20%-80% non-condensing	20%-80%	20%-80% non-condensing
Support	n/a			ONVIF, PSIA		
Certifications	CE, FCC, RoHS, UL			CE, FCC		

Part Number	EPN4220 PLUS	EPN4220i PLUS
Pickup Device	1/3" Sony CMOS	
Video Format	H.264/M-JPEG	
Scanning System	NTSC/PAL	
Sensitivity	0.5 Lux @ F1.6	
S/N Ratio	>50 dB (AGC OFF)	
Video Output	1Vp-p/75ohm	
Electronic Shutter	1/2 ~ 1/10,000 sec	
Lens Type	Auto Iris f1.6 ~ 3.5	
Zoom Ratio	20x Optical Zoom, 10x Digital Zoom	
True Day/Night	Yes (Auto/DAY/NIGHT)	
Backlight Compensation	Yes (Off/On)	
AGC	Yes (Auto, Manual)	
WDR	Yes (Off/On)	
White Balance	Auto/ Indoor/ Outdoor/ One Push/ Manual	
Motion Detection	Yes	
Focus Control	One Push/Auto/Manual	
Horizontal Rotation Speed	0.01°/s ~ 360°/s (1-255 grade shift gears)	
Horizontal Rotation Range	360° unlimited rotation	
Tilt Rotation Range	90° pendulum motion	
Auto Zoom Speed Control	Control speed auto-adjusted according to zoom length changing	
Auto Pan	2 point scanning, can set freely	
Auto Pan Speed	1~255 grade available, 0.01°/s-360°/s	
Dwell Time	1~99 second available	
Preset Position	192 Positions	
Running to Position Speed	1~255 grade available, 0.01°/s-360°/s	
Tour	16 groups	
Tour Point Per Group	16 preset positions	
Pattern Position Accuracy	4 patterns with 90 seconds long each	
Alarm	4 in, 1 out triggered by intelligent event and external input	
Built-in Protocols	HTTP, TVP/IP, FTP, SMTP, DHCP, DNS, DDNS, NTP	
Interface	10/100 Base-T Ethernet, RJ-45 socket	
Bandwidth Control	Min. 64K byte/second adjustable	
Alarm Triggers	4 in 1 out triggered by intelligent event and external input	
Alarm Events	Smart alarm reaction & resume after alarm	
Processors & Memory	Micro SD / SDHC	
Manual Pan/Tilt Speed	Pan: 0.01° ~ 180°/s, Tilt: 0.01° ~ 180°/s	
Position Accuracy	±0.1°	
Weather Resistant Rating	IP66	Indoor
Power Source	24VAC	
Power Consumption	30W Max	
Operating Temperature	-40°C ~ 50°C / -40°F ~ 122°F (heater on below ~30°F)	-10°C ~ 50°C / -14°F ~ 122°F ≤ 85%
Dimensions	180 x 280mm / 7.1" x 11"	159 x 230mm / 6.3" x 9.1"
Weight	3.0kg / 6.62 lbs	
Certification	CE, FCC, UL	

HDcctv EASILY Connects with Standard Coax



EHH5200
Outdoor 3-Axis
Vandal Dome

- 1080p / 1920 x 1080 HDcctv Megapixel
- 3.3-12mm, Vandal Resistant Housing



**HDcctv
Cameras**



EHH5241
Outdoor IR
3-Axis Vandal Dome

- 1080p / 1920 x 1080 HDcctv Megapixel
- 3-9mm, IR Range up to 100 Feet



EZH5241
Outdoor
IR Bullet

- 1080p / 1920 x 1080 HDcctv Megapixel
- 3-9mm, IR Range up to 150 Feet



EDH5240
Indoor 3-Axis
IR Dome

- 1080p / 1920 x 1080 HDcctv Megapixel
- 3.3-12mm, IR Range up to 65 Feet
- Flush or Surface Mounting Options



EQH5201
Box

- 1080p / 1920 x 1080 HDcctv Megapixel
- Accepts C/CS Lenses (lens not included)

**MobileFocus Available for
Download in the App Store
iPhone/Android/Blackberry**



Part Number	EHH5200	EHH5241	EZH5241	EDH5240	EQH5201
Pickup Device	1/2.7" 2 Megapixel CMOS sensor	1/2.8" Sony Exmor R 2.1 megapixel color progressive CMOS sensor		1/2.7" 2 Megapixel CMOS sensor	1/2.8" Sony Exmor R 2.1 megapixel color progressive CMOS sensor
Sensitivity	0.5 lux/F=1.4; 0 lux IR ON	1 lux/F=1.4; 0 lux (IR LED ON)		0.5 lux/F=1.4; 0 lux IR ON	1 lux/F=1.4; 0 lux (IR LED ON)
True Day/Night	Yes (Auto IR cut filter removal)				
Effective Pixels	1920x1080				
S/N Ratio	45dB	50 dB max.		45dB	50 dB max.
Resolution Main Output	Supports video outputs of 1080i60/50; 1080p30/25; 720p60/50/30/25 (field select)				
Video Format Test Output	NTSC/PAL selectable 1V p-p (in test mode only)				
Electronic Shutter	Auto/Manual selectable				
Lens Type	Megapixel Varifocal lens, A/I, f=3.3~12mm, F=1.4	Vari-focal megapixel lens A/I, f=3-9mm		Megapixel vari-focal lens, A/I, f=3.3~12mm, F=1.4	Accepts C and CS mount lenses; DC iris lens support
BLC	On/Off selectable				
Auto Gain Control	Yes*				
Auto White Balance	Yes*				
Language Support	Multi-Language				
Image Flip	Yes*				
IR Wavelength	n/a	850nm			n/a
IR Range	n/a	Up to 100 feet	Up to 150 feet	Up to 65 feet	n/a
Gamma Correction	PC/TV selectable	n/a		PC/TV selectable	n/a
OSD Menu	yes (controlled from rear 5-axis joystick control)				
Weatherproof	IP66 Weather Resistant		IP67 Weather Proof	Indoor	Yes, with optional housing
Vandal Resistant	Yes			n/a	n/a
Power Source	12VDC/24VAC Auto Polarity Detection				
Power Consumption (maximum)	12VDC	3.3W	800mA	1.1A	11.3W
	24VAC	5.5W	10W	12W	7.4W
Dimensions	4.8" x 4.2"	5.94" x 4.86"	12.9" x 3.26" x 4.33"	Surface: 5.5" x 5.1" Flush: 5.5" x 2.8"	2.86" x 2.60" x 5.45"
Weight	1.6 lbs	2.09 lbs	4.4 lbs	1.45 lbs	.93 lbs
Operating Temperature	-10° ~ 50°C/ 14° ~ 122°F			0° C~ 40°C/ 32° ~ 104°F (20-80% Humidity)	-10° ~ 50°C/ 14° ~ 122°F (20-80% Humidity)
Certifications	FCC, CE	FCC, CE, HDcctv Alliance Base-Line Compliance		FCC, CE	FCC, CE, HDcctv Alliance Base-Line Compliance

Visit www.everfocus.com for availability



EHH5205
Outdoor
Vandal Wedge

- Low Profile 3-Axis Vandal Wedge
- 3.6mm Fixed Lens, IP66 Weather Resistant



EBH5241W
Outdoor
Ball Camera

- 3.6mm, IP66 Weather Resistant
- IR Range up to 60 Feet



EBH5241B
Outdoor
Ball Camera

- 3.6mm, IP66 Weather Resistant
- IR Range up to 60 Feet



EDH5102
Indoor Mini
2-Axis Dome

- 2.8mm
- 2 Axis Mini



EDH5201
Indoor
Fixed Dome

- 3-Axis
- 2.45mm Fixed, 12VDC



EDH5210
Indoor
Dome

- 3.6-16mm, Dual Voltage
- 3-Axis



EBH5201
Indoor
3-Axis Bullet

- 3.6mm Fixed Lens, 12VDC



EDH5205
Indoor
Wedge

- Low Profile 3-Axis Wedge
- 3.6mm Fixed Lens, 12VDC



EQH5102
Mini
Box

- Accepts C/CS Lenses (lens not included)
- DC Iris or Manual Lens Support



HDcctv DVRs



EPHD08/4 (4 TB)
EPHD08/8 (8 TB)

HDcctv DVR Features

- MobileFocus: Supports iPhone®/iPad®/Android™/Blackberry®
- Recording: HD Virtual Real Time 15 FPS @ 1080p; Real Time 30 FPS @ 720
- Dual Stream Controls: Record at a higher resolution but view at a lower resolution online/mobile device for faster viewing
- 2x, 4x, 8x, 16x zoom on local and remote live & playback
- Independent Ch Controls: Frame Rate/Resolution/Record Quality
- Recording resolution can be changed at different times of the day via scheduling
- Simultaneous Pentaplex Operation at DVR & Online: Live/Recording/
- H.264 Compression for efficient disk and network utilization
- FREE DDNS Service Hosted by EverFocus for EASY Networking
- Main Monitor: Simultaneous Viewing at 1920 x 1080 on HDMI and VGA
- Built-in DVD burner
- Supports External Hard Drive Storage via eSATA
- Per-Camera Audio Channels

2 HDcctv I 14 SD
EDRHD2H14/2 (2 TB)
EDRHD2H14/4 (4 TB)
EDRHD2H14/6 (6TB)
EDRHD2H14/8 (8 TB)

4 HDcctv I 4 SD
EDRHD4H4/2 (2 TB)
EDRHD4H4/4 (4 TB)
EDRHD4H4/8 (8 TB)

- Multiple control inputs: mouse/front panel/IR remote controller/EKB500 keyboard
- User Friendly GUI with graphical icons and visual indicators
- Local & Remote On-Screen PTZ Control
- Built-in recording calculator estimates storage capacity based on settings
- Smart Search: quickly identify motion in areas of interest from recorded video
- Event Search: Search date/time by an event (alarm, motion, video loss)
- Express Playback & Search: Point, Click, Drag playback bar for Instant Viewing
- Express Setup: A unique menu option for quick & easy installation
- 3 different administration levels to restrict or allow access to DVR controls (DVR/Online Interface)
- Online Web interface: Allows 10-users to simultaneously view online from a browser
- Rack Mountable (19") includes Rack Ears
- IR Remote & USB Mouse included

Part Number	EPHD08	EDRHD4H4	EDRHD2H14
Channels	8 HDcctv channels	4 HDcctv and 4 SD channels	2 HD and 14 SD channels
HD Recording & Playback Rate	1080: 15/12.5 FPS per camera 720: 30/25 FPS per camera		
SD Recording Rate & Playback Resolution	n/a	D1/2CIF/CIF: 30/25 FPS per camera	
Looping Camera Outputs	n/a	4 Analog BNC Outputs for SD	14 Analog BNC Outputs for SD
Call Monitor	n/a		
Export Video	Built-in DVD Burner, USB Port		
Hot-Swappable Bays	n/a		
Internal HDD Max	Supports up to 8 TB (4 HDD)		
External HDD Max	1 eSATA Supports up to 8 TB (4 HDD)		
HDD Combined Max	16 TB Combined Total	10 TB Combined Total	
Audio Input	One per channel		
Audio Output	1-Output	2-Outputs	
RS-485	1 RS-485 (3 Terminal Connector)	RS485 (2 RJ45 Connectors)	
User Interface	GUI (Graphical User Interface)		
Mobile Viewing	MobileFocus & MobileFocus+	Web Browsers & MobileFocus & MobileFocus+	
Recording Compression	H.264		
Dual Streaming	View remotely with reduced or full resolution bandwidth while recording full 1080/720		
Operating System	Embedded Linux		
Network/Protocol	Gigabit Ethernet, TCP-IP/DHCP/PPPoE/DDNS/UDP/SMTP/SSL/HTTP	Gigabit Ethernet	
Pentaplex Operation	Simultaneous Live, Recording, Playback, Archive and Remote Viewing		
USB	3 USB 2.0 port (2 on Front Panel, 1 on Back Panel)	2 USB 2.0 Ports	
Main Monitor Output	Main Monitor 1080p HDMI socket (Type A 19 pin F) I VGA: 1920x1080 @ 60Hz (D-Sub socket 15 pin F)	Main Monitor 1080p HDMI socket (Type A 19 pin F) I VGA: 1920x1080 @ 60Hz	Main Monitor 1080p HDMI socket (Type A 19 pin F) I VGA: 1920x1080 @ 60Hz
Playback Search	Date/Time & Event, Smart Search	Date/Time, Event, Motion, Smart, Snapshot	
Event Log	Yes		
Watch Dog Timer	Yes		
Quick Archive	Archive video instantly (to USB/DVD) while playing back		
Motion Detection	Yes		
Video Loss Detection	Yes		
Schedule Setting	Supports Express and Advanced Schedule Setting		
Recording Modes	Continuous, Schedule, and Event		
Video Pause	Yes		
User Access	3 Levels of User Access Support		
Control PTZ via OSD	Locally/Remote via OSD		
Supported PTZ Protocols	EverFocus, Pelco D, Pelco P, Samsung, Transparent		
Language Support	Multi-language support		
Alarm-In	8 alarm inputs		16 alarm inputs
Alarm-Out	2 alarm outputs- Form "C" rated at 30VDC, 1A	4 alarm out	
Power Source	100VAC-240VAC		
Power Consumption	130 W max. with 4x HDDs	100 W Max with 4x HDDs	
Environmental	32°F~104°F(20-80% humidity)I 0°C~40°C		
Dimensions	16.2" x 16.9" x 3.5"	16.6" x 16.9" x 3.2"	
Certifications	CE, FCC, UL		

Part Number	EPH5212
Pickup Device	2.1 Megapixel Sony Exmor R CMOS
Video Format	HD: 1920 x 1080 (Full Hd, 1080P @ 30/25 FPS), HD: 1280 x 720 (HD, 720p @ 60/50 FPS), SD: NTSC/PAL
Picture Elements	Full time composite analog output (NTSC/PAL)
Sensitivity	0.2 lux/f=1.6 DSS off color; 0.1 lux ICR removed
S/N Ratio	50 dB
Video Output	HDcctv, Full Time SD
Electronic Shutter	Auto/Manual Selectable
Digital Slow Shutter	Programmable Off or 2x-64x; max 8x recommended
Lens Type	12x Optical/ 5mm wide-60mm tele, Optical view angle ~52.4° (wide) to ~4.64° (tele)
Zoom Ratio	12x Optical and 10x digital zoom with Auto Focus
True Day/Night	True Day/Night with Auto ICR function
Backlight Compensation	On/Off selectable
AGC	Yes (Level 0-186)
WDR	Electronic WDR (On/Off)
White Balance	ATW/Push/Manual/Specific Color or Color Temperature
Motion Detection	Yes
Privacy Zone Masking	Yes (8 zones)
Focus Control	Off/manual, full auto or 'one touch' (holds focus after initial setting after movement)
Horizontal Rotation Range	Pan: Speed up to 360°/sec; continuous 360° rotation
Auto Pan Speed	Maximum 0.75 seconds present recall time; manual speed proportional to zoom ratio
Preset Position	up to 210 positions may be stored; programmable preset speed
Tour	Up to 8 tours (consisting of presets, patterns and scans)
Alarm	4 NO/NC programmable trigger inputs; programmable relative priority of alarms.
Built-in Menu Functions	Yes, OSD menu (controlled via RS-485; optional password protection)
Communication	RG59 and RS-485
Communication Speed	2400 ~ 38,400 baud rate
Built-in Protocols	EVF, Pelco-P, Pelco D
Speed Dome Address	Address Range 00 ~ 99
Manual Pan/Tilt Speed	Tilt: Speed up to 260°/sec; 180° range (± 90°); digital auto flip for continuous tracking
Weather Resistant Rating	IP66
Power Source	24VAC +/- 10%
Power Consumption	~850mA heater off; ~1.8A heater on
Operating Temperature	-40°C ~ 50°C / -40°F ~ 122°F (heater on below ~30°F)
Dimensions	Body diameter 6.55"; height with wall arm 10", clear bubble diameter 4.7", projection from rear with wall arm 13.4" (10.2" to center line of dome)
Weight	4.9 lbs
Certification	FCC, CE, HDcctv Alliance base-line compliance

Ultra Series Camera Features

- Ultra resolution of over 720+ TVL for astounding image quality
- ExView HAD II sensor delivers amazing ultra high sensitivity of 0.05 Lux
- Very low light sensitivity without DSS low light boost. Zero Ghosting Guaranteed
- Digital WDR delivers properly exposed images despite unbalanced lighting in the scene
- Full suite of OSD menu options (Except ED700/EMD700)



ED700

Indoor Day/Night 3-Axis Mini Dome Camera

ED700 (Black), ED700W (White)

- Fixed 3.6mm Lens
- 3-Axis Rotation for wall or ceiling mounting
- Compact size for discreet surveillance



ED710

Indoor True Day/Night 3-Axis Mini Dome Camera

Featured Product

- Megapixel 2.8-12mm Lens, External Zoom & Focus
- Built-in Joystick for OSD Controls
- 3-Axis Rotation for wall or ceiling mounting



EHD700

Outdoor True Day/Night 3-Axis Vandal Dome Camera

Featured Product

- Megapixel 2.8-12mm Lens, External Zoom & Focus
- IP66 weather resistant rating,
- Use in Temperatures up to -40°
- Withstand the impact of a 10 lb sledgehammer!
- Surface or Flush Mount Option



EM700

Indoor Day/Night Micro Metal Case Camera

EM700P1 (3.7mm Cone)
EM700P3 (3.7mm Flat)
EM700P4 (4.3mm Cone)

- Compact Metal Case for covert/discreet surveillance



EMC700

Outdoor Day/Night Mini Bullet Camera

- Fixed 3.6mm Lens
- IP67 weatherproof rating



EZ700

Outdoor Day/Night Mini Bullet Camera

EZ700B (Black), EZ700W (White)

- 3.5-16mm lens. External Zoom & Focus
- IP67 weatherproof rating
- Fully adjustable mount encloses and protects cables

Part Number	ED700	ED710	EHD700	EM700	EMC700	EQ700	EMD700	EZ700	
Pickup Device	1/3" Sony Exview HAD II 960H High Sensitivity Interline CCD								
Effective Pixels (NTSC)	976 x 494 (NTSC)								
Horizontal Resolution	720+ TVL								
Sensitivity	.05 Lux	0.05 Lux/ F=1.0	.05 Lux*	.05 Lux		Clr: .001 Lux B/W: .0001 Lux/F1.0	.05 lux/ F2.0	.05 lux/ F1.2	
S/N Ratio	Over 50dB (AGC off)								
Electronic Shutter	1/60s~1/100,000s								
Video Output	BNC 1.0Vp-p 75Ω								
Gamma Correction	0.45								
Lens Type	3.6mm	2.8-12mm DC Iris	2.8-12mm DC Iris	3.7mm conical, flat; 4.3mm cone	3.6mm	C/CS Mount (lens sold sep)	3.6mm	3.5-16mm/ F=1.2	
Lens Options	Fixed	Varifocal		Fixed		n/a	Fixed	Varifocal	
BLC	n/a	Yes*					n/a	Yes*	
HLC	n/a	Yes					n/a	Yes*	
AGC	Fixed	Yes*					Fixed	Yes*	
White Balance	Anticrawl	Yes*		n/a	Yes*		Anticrawl	Yes*	
Sync Mode	Internal Sync*								
Day/Night	Auto*	True*	Electronic*	Auto*		True*	Auto*	Digital*	
OSD Menu	n/a	Multiple Functions							
OSD Languages	n/a	8*					n/a	8*	
DNR	2D*								
Digital Wide Dynamic Range	On	Selectable*					On	Selectable*	
Mirror	n/a	Yes*					n/a	Yes*	
Motion Detection	n/a	Yes*					n/a	Yes*	
Privacy Mask	n/a	Yes*					n/a	Yes*	
Environmental	Indoor		IP66 Weather Resistant	n/a		Indoor/ Sep Housing	IP67 Waterproof		
Power Consumption (max)	12VDC	110mA	2.16W	1.92	70mA	1.32W	2.16W	110mA	2.04W
	24VAC	n/a	2.9W	2.2W	n/a	n/a	2.9W	n/a	1.8W
Operating Temp	14°F ~ 122°F		-40°F ~ 122°F	14°F ~ 122°F			-40°F ~ 122°F	14°F ~ 122°F	
Humidity	Less than 80% non-condensing		IP66	Less than 80% non-condensing			IP67		
Dimensions (in)	4.08 x 3.09"	5.37" x 3.75"	Surface: 6.14" dia. x 5.1" l Flush*	1.22" x 1.18" x 1"	Body: .9" dia. x 3" long	2.28 x 2.28 x 4.765"	3.19" x 2.48"	Body: 1.315" sunshield ; 8.625"	
Weight (lbs)	0.35lbs	1.6lbs	2.43lb	.88 oz. (P1, P3); .95 oz (P4)	0.2lbs	0.88lbs	0.55lbs	.10 lb	
Vandal	n/a		Proof	n/a			Proof	Resistant	
Heater	n/a						Built-in	n/a	
Mount				Included*					
Certifications	CE/FCC								

Ultra Ultimate



ED705

Indoor Wedge



EHD705

Outdoor Vandal Wedge IP66 Weather Resistant

- Low Profile 720+ TVL, 3.7mm Fixed
- True Wide Dynamic Range with Digital Day/Night
- Sony Sensor & Low Light Sensor
- 3-Axis Rotation for wall or ceiling mounting
- DSS/Sensup, 3D DNR
- Fit a wide variety of mounting locations and applications
- 4.7 x 4.7 x 1.7 Inches

Ultra Series



EMD700

Outdoor Day/Night Vandal Mini Dome

EMD700B (Black), EMD700W (White)

- Fixed 3.6mm Lens, IP67 weatherproof rating
- Use in Temperatures up to -40°
- Perfect for Mobile Applications



EQ700

True Day/Night Box Camera

- Built-in Joystick for OSD Controls
- Various lens options

Ultra Series with IR



Ultra Series Camera Features

- Ultra resolution of over 720+ TVL for astounding image quality
- ExView HAD II sensor delivers amazing ultra high sensitivity of 0.05 Lux
- Very low light sensitivity without DSS low light boost. Zero Ghosting Guaranteed
- Digital WDR delivers properly exposed images despite unbalanced lighting in the scene
- Full suite of OSD menu options
- Dual Voltage



ED730

Featured Product

Indoor True Day/Night IR
3-Axis Mini Dome Camera

ED730 (Black), ED730W (White)

- 2.8-12mm Lens
- 3-Axis Rotation for wall or ceiling mounting
- IR Range up to 100 Feet



EHD730

Featured Product

Outdoor True Day/Night IR
3-Axis Dome Camera

- 2.8-12mm Lens, Surface or Flush Mounting Design
- IP66 Weather Resistant, Use in Temperatures up to -40°
- 3-Axis rotation for wall or ceiling mounting
- IR Range up to 100 Feet



EZ730

Outdoor True Day/Night IR
Bullet Camera

EZ730B (Black)
EZ730W (White)

- 2.8-12mm Lens
- IP66 Weather Resistant Rating
- IR Range up to 82 Feet

Ultra Series



EZ750

Outdoor
True Day/Night IR
Bullet Camera

EZ750W (White), EZ750B (Black)

- 2.8-12mm Lens, IP67 Waterproof Rating
- IR Range up to 164 Feet



Part Number		ED730	EHD730	EZ730	EZ750
Pickup Device		1/3" Sony Exview HAD II 960H High Sensitivity Interline CCD			
Effective Pixels (NTSC)		976 x 494 (NTSC)			
Horizontal Resolution		720+ TVL			
Sensitivity		Clr: .05 Lux/F1.2 B/W: .02 Lux/F1.2	0 lux with IR on .05 Lux*	.05 lux/F1.2	.05 Lux, 0 Lux w/ IR*
Sensitivity IR on		0 Lux			
S/N Ratio		Over 50dB (AGC off)			
Electronic Shutter		1/60s~1/100,000s			
Video Output		BNC 1.0Vp-p 75Ω			
Gamma Correction		Adjustable*			
Lens Type		2.8-12mm DC Iris			
BLC		Yes*			
Gain Control		Yes*			
White Balance		Yes*			
Sync Mode		Internal Sync*			
IR LED		30 Units	20 Invisible LEDs	45 Smart LEDs	
IR Wave Length		850nm	940nm	850nm	
IR Distance		up to 100 feet	Up to 82Ft	Up to 50M	
IR Configuration		n/a	Split glass isolation prevents internal reflections		
Day/Night		True			
OSD Menu		Built-in joystick controller			
OSD Languages		8*			
Digital Noise Reduction		2D*			
Digital Wide Dynamic Range		Yes*			
Mirror		Yes*			
Motion Detection		Yes*			
Privacy Mask		Yes*			
Environmental		Indoor	IP66 Weather Resistant		IP67 Waterproof
Power Consumption (max)	12VDC	390mA	2.16W	270mA	1.1A
	24VAC	4.8W	2.9W	4.9W	21W
Operating Temp		14°F ~ 122°F	-40°F ~ 122°F	14°F ~ 122°F	
Humidity		Less than 80% non-condensing	IP66		IP67
Dimensions (in)		5.37" x 3.75"	Surface: 6.14" dia. x 5.1" I Flush*	3.22" x 3.1" x 5.7"	3.8" x 3.26" x 4.35"
Weight (lbs)		0.76 lbs	3 lbs	1.98 lbs	
Vandal		n/a	Proof	Resistant	
Heater		n/a		Built-in	
Video Test Point		Yes			
Certifications		CE/FCC			

EZ630: Outdoor True Day/Night IR Bullet

EZ630MVB (2.8-10mm)
EZ630MV2 (9-22mm)

- IP66 Weather Resistant
- IR Range 196 Feet
- Use in Temperatures up to -40°



ED610

Outdoor True Day/Night Dome
ED610MVB

- 2.8-10mm or 9-22mm A/I
- 3-Axis Vandal Resistant
- IP66 Weather Resistant
- Various Housing Color Options

Polestar II



EQ610A

- Various Lens & Housings Sold Separately



EZ610MVB

Outdoor True Day/Night Bullet

- 2.8-10mm A/I
- IP66 Weather Resistant
- Speedy Mount Ring & 4" Electrical Box Compatibility
- Use in Temperatures up to -40°



Polestar II Series Features

- True Day/Night with superior image quality
- Very low light sensitivity without DSS low light boost.
- Full suite of OSD menu options
- Digital WDR delivers properly exposed images despite unbalanced lighting in the scene

POLESTAR



EverFocus E-Line series cameras are economically priced, but offer superior resolution and picture quality with the Sony Super HAD CCD sensor. These NTSC cameras are offered in your choice of dome or bullet housings and are powered from 12VDC. Select models offer a 3-Axis gimbal for easy install, IRs for viewing in complete darkness, IP66 weather resistant rating so they can be installed outside, vandal proof housings able to withstand the impact of a 10lb sledgehammer and many more great features. When budget matters, the E-Line series from EverFocus is the Economical choice to make.



Eline Series



ECD360AV: Indoor 3-Axis Color Dome

- 540 TVL, 3.5-8.5mm lens
- 3-Axis for easy install
- Versatile for many indoor applications



ECZ360: Outdoor IR Bullet

- 540 TVL, 4.3mm Lens, 12VDC
- IP66 weather resistant rating
- IR distance approximately 80 Feet



EHD360: Outdoor 3-Axis IR Vandal Dome

- 540 TVL, 3.7-12mm Lens, 12VDC
- IP66 weather resistant rating
- Vandal proof to withstand a 10 lb sledgehammer!
- IR distance approximately 80 feet



ECZ260: Outdoor IR Bullet

- 420 TVL, 3.6mm lens, 12VDC
- IP66 weather resistant rating
- IR distance approximately 50 feet



ED360: Outdoor Color Vandal Dome

- 540 TVL, 3.5-8.5mm lens, 12VDC
- IP66 weather resistant rating
- Vandal proof to withstand a 10 lb sledgehammer!



ECD260: Indoor Mini Color Dome

- 420 TVL, 3.6mm lens, 12VDC
- Versatile for many indoor applications

	ECD230	ECD260	ECD360AV	ED360AV	EHD360	ECZ360	ECZ260
Product Description	Indoor Color Dome		Indoor 3-Axis Color Dome	Outdoor Color Vandal Dome	Outdoor 3-Axis IR Vandal Dome	Outdoor IR Bullet	
Pickup Device	1/3" SONY Super HAD CCD Sensor						
Video Format	NTSC						
Picture Elements	510 x 492 (NTSC)		768 x 494 (NTSC)				
Horizontal Resolution	380 TVL	420 TVL	540 TVL				420 TVL
Sensitivity	0.3 Lux/F=1.2	0.1 LUX / F2.0	0.12 LUX / F1.6		0.12 LUX / F1.6 0 Lux (IR On)		0.1 Lux / F2.0 0 Lux (IR On)
S/N Ratio	Over 48dB (AGC off)						
Electronic Shutter	1/60s~1/100,000s						
Video Output	BNC 1.0Vp-p 75Ω						
Gamma Correction	0.45						
Lens Type	3.6mm lens	3.6mm F2.0	3.5~8.5mm F1.6 DC Drive A/I		3.7~12mm / F1.4 DC Drive A/I	4.3mm F2.0	3.6mm F2.0
Gain Control	Auto						
White Balance	ATW (2500°K~9500°K)						
Sync. Mode	Internal Sync.						
IR LED	N/A			11 Units		30 Units	6 Units
IR Wavelength	N/A			850nm			
IR Distance	N/A			80ft / 25m			50ft / 15m
Environmental	Indoor Applications			IP66 Weather Resistant			
Power Source	12VDC						
Power Consumption	12VDC: 3W max.	12VDC: 1.2W max.	12VDC: 2.4W max.		12VDC: 3.4W max. (285mA IR On)	12VDC: 3.6W max. (300mA IR On)	12VDC: 2.8W max. (233mA IR On)
Operating Temperature	32°F~122°F 0°C~50°C	14°F~122°F -10°C~50°C					
Dimensions (O.D. X L)	3" x 2.3" 87 x 58mm	4" x 2.4" 100 x 60mm	5.6" x 3.3" 142 x 84mm		5.6" x 4.55" 142 x 115.5mm	2.9" x 8.55" 74 x 217.17mm	2.16" x 6.4" 54 x 162.56mm
Weight	0.1lbs 45.4g	0.23lbs / 103g	1.27lbs 576g		2.16lbs / 979g	0.85lbs / 387g	0.4lbs / 180g
Certifications	CE/FCC						

Additional Camera Options



ESD200N4

Non-working Smoke Detector Camera

- Side View Camera for optimal viewing angle
- Ceiling Mountable with 4.3mm Lens
- Fake Smoke Detector Shell



EZ430

Outdoor Day/Night IR Bullet Camera

EZ430MV3 (2.8-10mm) EZ430MV2 (9-22mm)

- Cable Management Bracket Included
- IP66 Weather Resistant
- Up to 98 Feet of IR Distance
- Split glass prevents internal IR reflections



E3D2412MPXW: Indoor Dome with 3 Cameras

- Three independent views from a single coax, power wire and DVR port
- Two wide angle 2.4mm lens camera plus a telephoto 12mm camera in a single housing
- Integral video processor with included IR hand held remote control plus RS485 wired control capability
- PIP, dual PIP, horizontal split and vertical split views. 8 different customizable layouts



EBD650: Outdoor 3-Axis Ball Camera

EBD650 (Black), EBD650W (White)

- Superior Resolution 650 TVL
- Sony Super HAD II Sensor for excellent Low Light Sensitivity
- 2.8-12mm with external adjustment controls
- Up to 75 Feet of IR Range
- 2D Dynamic Noise Reduction, 12VDC



EPTZ3100/3100i/3600
Shown with Pendent Mount



EPTZ100
Shown with Surface Ceiling Mount

EPTZ100

Indoor Mini Day/Night

- Snap & Lock Easy Installation
- 10x Optical, 10x Digital Zoom
- Includes recessed & surface ceiling mount
- Compact size for discreet surveillance

EPTZ3100i

Indoor True Day/Night with WDR

- Snap & Lock Easy Installation
- 30x Optical, 8x Digital Zoom
- WDR to improve images under extreme lighting conditions

EPTZ3100

Outdoor True Day/Night with WDR

- Snap & Lock Easy Installation
- 30x Optical, 8x Digital Zoom
- WDR to improve images under extreme lighting conditions

EPTZ3600

Outdoor True Day/Night with WDR

- Snap & Lock Easy Installation
- 36x Optical, 12x Digital Zoom
- WDR to improve images under extreme lighting conditions

PTZs



Part Number	EPTZ100	EPTZ3100	EPTZ3100i	EPTZ3600
Pickup Device	1/4" Sony Super HAD CCD	1/4" Sony CCD		1/4" Sony Ex-View HAD CCD
Video Format	NTSC or PAL			
Scanning System	n/a	NTSC: 525 TVL, 60 fields/sec., PAL: 625 TVL, 50 fields/sec.		
Picture Elements	n/a	768 x 494 (NTSC) / 752 x 582 (PAL)		
Horizontal Resolution	520 TVL (Color Mode), 570 TVL (B/W Mode)	520 TVL		530 TVL
Sensitivity	0.7 Lux/F=1.8 (50 IRE - color mode), 0.02 Lux/F=1.8 (50 IRE - b.w mode), 0.005 Lux (DSS x 128)	Normal: 0.4 Lux/F1.6, Night Mode: 0.08 Lux/F1.6 (ICROn)		Normal: 1.4 Lux/ 1/60(1/50)sec, Night Mode: 0.01 Lux/ 1/4(1/3)sec (ICR On)
S/N Ratio	Over 50 dB	50 dB		
Video Output	BNC 1.0Vp-p (sync. Negative)	BNC 1.0Vp-p / 75 ohm		1Vp-p/75ohm
Electronic Shutter	1/60 (1/50) - 1/120,000 automatic (ESC) or manual	128x - 1/60 (1/50) - 1/120,000 (NTSC/PAL)		
Digital Slow Shutter	Up to 128x	128x		60x (50x for PAL)
Shutter Selection	1/60 ~ 1/120,000 NTSC, 1/50 ~ 1/120,000 PAL, Automatic (ESC) or Manual	AUTO/A.FLK/Manual 128x-1/60 (1/50) 1/120,000 selectable		AUTO; A.FLK; Manual 1~1/10,000 selectable
Lens Type	f=3.8mm(wide) ~ f=38mm (tele), f=1.6mm(wide) ~ f=2.8mm(tele)	f=3.3mm wide to 99mm tele, F1.6 to F3.2		36x optical zoom, f=3.4mm (wide) to 122.4mm (tele), F1.6 to F4.5
Zoom Ratio	10x Optical Autofocus Zoom (+10x digital zoom, max. 100x)	240x max. (30x Optical and 8x digital zoom)		432x max (36x optical and 12x digital zoom)
True Day/Night	IRC + b/w switching manual/automatic	Yes (Auto/DAY/NIGHT)		
Backlight Compensation	Adjustable 3 steps/Off	Yes (Off, Low, Mid, Hi)		Yes (Off, On)
AGC	Adjustable 3 steps/ Off	Yes (Off, Low, Mid, Hi)		Yes (Auto, Manual)
WDR	n/a	Yes (OFF, Auto, On)		Yes (Off, On)
White Balance	Auto AWC/ATW mode, manual	Indoor/Outdoor, MAN5100K/3200K/2000K, One Push		Auto, Indoor, Outdoor
Motion Detection	n/a	Yes (On/Off)		Yes (4 zone)
Privacy Zone Masking	4 zones, free adjustable	Yes (8 zones)		
Gamma Correction	n/a	0.45		n/a
Sync Mode	Internal			
Focus Control	Auto, one-push AF, manual	One Push/Auto/Manual		
Horizontal Rotation Range	360° unlimited rotation			
Tilt Rotation Range	90° with auto flip	90° pendulum motion		
Auto Zoom Speed Control	n/a	Control speed auto-adjusted according to zoom length changing		
Auto Pan	2 points scanning: adjustable speeds & end stops	2 point scanning, can set freely		
Auto Pan Speed	2, 6, 12, 30, 60, 120°/ second	1~255 grade available, 0.01°/s-360°/s	1~255 grade available	1~255 grade available, 0.01°/s-360°/s
Preset Position	64	192 Positions		
Running to Position Speed	up to 240° / sec	1~255 grade available, 0.01°/s-360°/s	1~255 grade available (at preset position)	1~255 grade available, 0.01°/s-360°/s
Tour	Preset tours 1 tour w/ 16 positions, 4 group tours w/ 4 positions each, 1 tour with individual setup (up to 32 positions)	16 groups		
Tour Point Per Group	1 tour with 16 positions, 4 group tours with 4 positions each	16 preset positions		
Pattern Position Accuracy	4x 10 min patterns, up to 800 movements/600s each	4 patterns with 90 seconds long each	4 patterns with 90 seconds long	
Alarm	3 inputs, 1 output (with tour/position auto triggering)	4 in, 2 out with tour/position auto triggering		
Built-in Menu Functions	Yes, OSD			
Communication	RS-485 simplex 2 wire	RS-485		
Communication Speed	2400/4800/9600bps	1200/2400/4800/9600bps		
Built-in Protocols	EverFocus/Pelco-P/Pelco-D (setup by DIP switch)	EVF-1, Pelco-P, Pelco-D, A-Type, Plus-D, AUTO, Panasonic (Plus-D supports all other brands, equivalent to Pelco-D)		
Edit Address	Yes (through DIP switch)			
Speed Dome Address	1 ~255 (setup by DIP switch)	0~255		
Manual Pan/Tilt Speed	0.5°~240°/ sec	Pan: 0.01° ~ 180°/s, Tilt: 0.01° ~ 180°/s		
Weather Resistant Rating	n/a	IP66	n/a	IP66
Power Source	24VAC +/- 10%	24VAC		
Power Consumption	19W max. (w/ PTZ motor), 12W max (w/out PTZ motor)	21W max		
Operating Temperature	0°C ~ +40°C / 32°F ~ 104°F _ 85%	-40°C ~ 50°C / -40°F ~ 122°F _ 85%	-10°C ~ 50°C / -14°F ~ 122°F _ 85%	
Dimensions	8" x 4.5" (with ceiling mount adapter)	7.1" x 11"	6.3" x 9.1"	7.1" x 11"
Weight	3.3 lbs (camera module incl. adapter board)	6.6 lbs		6.62 lbs
Certification	CE, FCC			



DVRs



Standard EverFocus DVR Features

- Free MobileFocus Mobile Device Monitoring App: iPhone/Android/Blackberry
- Online Web interface: Allows 10-users to simultaneously view online from a browser
- Independent Channel Controls: Frame Rate/Resolution/Record Quality
- Recording resolution can be changed at different times of the day via scheduling
- 3 user levels to control access to DVR functions locally and online
- Simultaneous Pentaplex Operation at DVR & Online: Live/Recording/Playback/Archiving/Remote View
- FREE DDNS Service Hosted by EverFocus for EASY Networking Options
- H.264 Compression for efficient disk and network utilization
- Dual Stream Controls: Record at a higher res. but view live video at a lower res. online/mobile device for faster viewing
- Local & Network On-Screen PTZ Control
- Built-in recording calculator used to estimate storage capacity based on settings
- 2x & 4x Live/Playback Zoom
- Express Playback & Search: Point, Click, Drag playback bar for Instant Viewing
- Express Setup: Unique menu option for quick & easy installation

Select DVR Features

- Snapshot Search: View incremental Snap Shots of video to easily go through days of footage in minutes.
- Smart Search: Identify points of interest from recorded video
- Quick Archive the last 10/20/30/60/90 minutes of video
- From a remote location archive video content directly from the DVR to a USB stick that is connected to the DVR



ECOR264-4 F2/D2 Series: 4 Channel

ECOR264-4F2: Without DVD Burner

ECOR264-4D2: With DVD Burner

- 120 FPS at 2-CIF/CIF, 60 FPS at D1
- VGA and BNC Main Monitor
- Time/Date & Event Search
- Compact space saving design

ECOR264-4F2

ECOR264-4F2/500: 500 GB
ECOR264-4F2/1TB: 1 TB
ECOR264-4F2/2TB: 2 TB

ECOR264-4D2

ECOR264-4D2/500: 500 GB + DVD
ECOR264-4D2/1TB: 1 TB + DVD
ECOR264-4D2/2TB: 2 TB + DVD



ECOR264-X1 Series 4, 9, 16 Channel with DVD

- Built-in DVD Burner (X1 Series) Hot-Swap Hard Drive (X1R Series)
- Choice of VGA or BNC Main Monitor
- 4-Audio Inputs, 1-Audio Output / eSATA Port
- Time/Date, Event, Smart & Snapshot Search + Quick Archive



ECOR264-X1R Series 4, 9, 16 Ch with Hot-Swap Hard Drive

ECOR264-4X1 4 Ch with DVD

ECOR264-4X1/500: 500 GB
ECOR264-4X1/1T: 1 TB
ECOR264-4X1/2T: 2 TB
ECOR264-4X1/4T: 4 TB

ECOR264-9X1 9 Ch with DVD

ECOR264-9X1/500: 500 GB
ECOR264-9X1/1T: 1 TB
ECOR264-9X1/2T: 2 TB
ECOR264-9X1/4T: 4 TB

ECOR264-16X1 16 Ch with DVD

ECOR264-16X1/500: 500 GB
ECOR264-16X1/1T: 1 TB
ECOR264-16X1/2T: 2 TB
ECOR264-16X1/4T: 4 TB

ECOR264-4X1R 4 Ch Hot Swap

ECOR264-4X1R/500: 500 GB
ECOR264-4X1R/1T: 1 TB
ECOR264-4X1R/2T: 2 TB

ECOR264-9X1R 9 Ch Hot Swap

ECOR264-9X1R/500: 500 GB
ECOR264-9X1R/1T: 1 TB
ECOR264-9X1R/2T: 2 TB

ECOR264-16X1 16 Ch Hot Swap

ECOR264-16X1R/500: 500 GB
ECOR264-16X1R/1T: 1 TB
ECOR264-16X1R/2T: 2 TB

ECOR264-8D2 Series: 8 Channel

ECOR264-8D2: With DVD Burner

- 240 FPS at CIF, 120 FPS at 2-CIF, 60 FPS at D1
- VGA and BNC Main Monitor
- Time/Date & Event Search
- Compact space saving design
- Hard Drive Options: 500 GB, 1 or 2 TB

ECOR264-8D2

ECOR264-8D2/500: 500 GB
ECOR264-8D2/1T: 1 TB
ECOR264-8D2/2T: 2 TB



Endeavor Series 16 Channel

ENDEAVOR-X4

- 480 FPS at D1/2-CIF/CIF
- 16 Looping Outputs
- HDMI and VGA Monitor with BNC Call Monitor
- Time/Date, Event, Smart, Text & Snapshot Search + Quick Archive
- Hard Drive Options: 1, 2, 4, or 8 TB + eSATA Port

ENDEAVOR-X4

ENDEAVORX4/1: 1 TB
ENDEAVORX4/2: 2 TB
ENDEAVORX4/4: 4 TB
ENDEAVORX4/8: 8 TB



Paragon Series 16 & 32 Channel

EPARA264-16X4: 16 Ch

EPARA264-16X4R: 16 Ch + Hot-Swap

- 480 FPS at CIF/2-CIF/D1
- HDMI, VGA and BNC Main Monitor
- Time/Date, Event, Smart Search + Quick Archive
- eSATA Port

EPARA264-16X4

EPARA264-16X4/1T: 1 TB
EPARA264-16X4/2T: 2 TB
EPARA264-16X4/4T: 4 TB
EPARA264-16X4/6T: 6 TB
EPARA264-16X4/8T: 8 TB

EPARA264-16X4R Hot-Swap

EPARA264-16X4R/1T: 1 TB
EPARA264-16X4R/2T: 2 TB
EPARA264-16X4R/4T: 4 TB

EPARA264-32X4: 32 Ch

EPARA264-32X4R: 32 Ch + Hot-Swap

- 960 FPS at CIF/2-CIF, 480 FPS at D1
- HDMI, VGA and BNC Main Monitor
- Time/Date, Event, Smart Search + Quick Archive
- eSATA port

EPARA264-32X4

EPARA264-32X4/4: 4 TB
EPARA264-32X4/8: 8 TB

EPARA264-32X4R Hot-Swap

EPARA264-32X4R/4: 4 TB



**MobileFocus Available for
Download in the App Store
iPhone/Android/Blackberry**



DVR Specifications



Part Number	ECOR264-4F2	ECOR264-4D2	ECOR264-8D2	ECOR264X1	ECOR264-X1R	ENDEAVORX4	EPARA264-16x4	EPARA264-32X4
Channels	4		8	4,9, 16	4,9,16	16		32
All CIF (NTSC / PAL)	120/100		240/200	120/100 (4X1), 270/225(9X1), 480/400(16X1)		480/400		960/800
Half D1 (NTSC / PAL)	120/100			120/100(4X1), 240/200(9X1, 16X1)		480/400		Max 15 FPS Per cam
All D1 (NTSC / PAL)	60/50			120/100		480/400		
Camera Inputs (NTSC/PAL automatic selection)	4 BNC-F		8 BNC-F	4, 9, 16		16 BNC-F		32 BNC-F
Looping Camera Outputs	n/a			One per camera input (BNC)				n/a
Video Outputs	VGA or BNC*					HDMI or VGA*	HDMI or VGA or BNC*	HDMI or VGA*
Call Monitor	n/a			BNC multiview/event controlled				
USB	2 USB 2.0 Ports*						3 USB 2.0 Ports*	2 USB 2.0 Ports*
Built-in DVD Burner	n/a	Yes			n/a	Yes		
Hot-Swappable Bays	n/a				Yes	n/a	2 optional hot swappable HDDs	
Hard Drive Max	2 TB			6 TB	6 TB	10 TB	16 TB	10 TB
External Hard Drive	n/a			eSATA Option*	n/a	eSATA Option*		
Audio Input	1 RCA Input			4 RCA Inputs		16 RCA Inputs*	16 RCA Inputs	16 RCA Inputs*
Audio Output	1 RCA Output					2 RCA Outputs	1 RCA Output	2 RCA Outputs
RS-485	Terminal connector					2 RJ45 connectors	Terminal connector	2 RJ45 connectors
Compression Format	H.264							
OS	Embedded Linux							
Pentaplex Operation	Simultaneous Live, Recording, Playback, Archive, and Remote viewing							
User Interface	GUI (Graphical User Interface)							
User Access	3 Levels of User Access Supported (Local/Remote)							
Mobile Viewing	Live view on PDA or smart phone browsers, plus various web browsers & MobileFocus FREE apps for iPhone & Android							
2x/4x Live/Playback Zoom	Yes					Yes 2X,4X,8X,16X		Yes
Dual Streaming Recording	n/a					Yes	n/a	
Dual Live Web Interface Streaming (Main/Sub)	Yes							No
Sub Stream Option (H.264/ MJPEG)	Yes						No	
Playback Search	Date/Time, Event, Smart, Snapshot						Date/Time, Event, Smart	Date/Time, Event, Smart, Snapshot
Event Log	Yes							
Watch Dog Timer	Yes							
Smart Search	Yes							
Snapshot Search	Yes						n/a	Yes
Remote/Quick Archive	Yes							
Text Search	n/a					Yes	n/a	Yes
Motion Detection	Yes							
Video Loss Detection	Yes							
Schedule Setting	Express and Advanced Schedule Setting Tools							
2-Way Audio	Yes, via web interface							
Recording Mode	Continuous, Event and Schedule							
Video Pause	Yes							
Web Interface Snapshot	Yes					n/a		
Remote Reboot	Yes							
Event E-mail Notification	Yes							
Control PTZ via OSD	Yes							
PTZ Alarm Mode Trigger	Yes							
Supported PTZ Protocols	EverFocus, Pelco D, Pelco P, Samsung, Transparent							
Language Support	English, Russian,Traditional Chinese, Modern Chinese, Japanese, French, German, Hungarian, Italian, Dutch, Spanish, Turkish, Polish, Norwegian, Czech, Macedonia, Greek, Finnish, Swedish							
Alarm-In	4 terminal connectors		8 terminal connectors	One per camera input		16 terminal connectors		
Alarm-Out	1 terminal connector NO/NC (form "C" - rated: 12VDC @ 1A)			1, 2, 4		4 terminal connector NO/NC (form "C" - rated: 30VDC @ 1A)	4 form "C" relays	4 form "C" (SPDT) relays; 30VDC@1A rating
Alarm PTZ Preset/Mode Trigger	Yes			n/a				
Power Source	External power supply (110-240VAC input/12V DC output)					Internal power supply (110-240VAC input)		
Temp (F C)	32°F~104°F(20-80% humidity) 0°C~40°C							
Dimensions (in)	9.88" x 12.6" x 2.75"			13.89" x 13.96" x 3.06"		16.93" x 16.65" x 3.13"	13.89" x 13.96" x 3.06"	16.93" x 16.65" x 3.13"
Dimensions (mm)	250.95 x 320 x 69.85mm			353 x 354.8 x 70.6mm		430 x 423 x 72mm	353 x 354.8 x 70.6mm	430 x 423 x 72mm
Certifications	CE, FCC, UL							

PowerVideo +

New

PowerVideo +

FREE

Central Management Software



EMV800/1200 Shown

EMV400/800/1200 Features

4 Ch/500 GB: EMV400/500, EMV400W/500 (WiFi)

8 Ch/500 GB: EMV800/500

12 Ch/500 GB: EMV1200/500, EMV1200W/500 (WiFi)

- Free MobileFocus Mobile Device Monitoring App: iPhone/Android/Blackberry
- Online Web interface
- Real time recording and playback for each camera at 4CIF
- Independent Channel Controls: Frame Rate/Resolution/Record Quality
- FREE DDNS Service Hosted by EverFocus for EASY Networking Options
- Easy to Use Graphical Interface, USB mouse (included), IR remote controller (included), EKB500 Control Keyboard (sold separately)
- Call Monitor: single mode (EMV800/1200 only)
- Main Monitor: Choice of BNC or RCA
- 1-Audio Input per Channel, 1-Audio Output
- H.264 Compression for efficient disk/network utilization
- 2x & 4x Live/Playback Zoom
- Optional external GPS Sensor (EMV-GPS) for speed and geographic limit alarms (rectangular or circular fencing) for the EMV400/800/1200
- Embedded 3-axis G Sensor; data recorded; alarm if separate user limits X/Y or Z axis exceeded
- Capable of external EDGE/GPRS/DCMA/WiFi modules for cellular/specialized wireless transmission via 3rd party components



EMV200 2 Channel Compact Portable DVR

- Real Time Recording at 30 FPS at D1
- 2 Video/Audio/Monitor Inputs
- Built-in GPS Module
- Compatible with a 32GB SD/SDHC Card (SD/SDHC card sold separately)

Part Number	EMV400	EMV800	EMV1200	EMV200
Channels	4	8	12	2
All CIF (NTSC / PAL)	120/100	240/200	480/400	60/50
All 2 CIF (NTSC / PAL)	120/100	240/200		60/50
All D1 (NTSC / PAL)	120	240/200	120/100	60/50
Camera Inputs with Vibration Resistant Locking Molex Connectors	4 (Interface cables to BNC-F supplied: two groups of 2 inputs each)	8 (Interface cables to BNC-F supplied: 2X groups of 4 inputs each)	12 (Interface cables to BNC-F supplied: 3X groups of 4 inputs each)	2 (Interface cables to BNC-F provided)
Video Outputs	BNC rear panel or RCA front panel			BNC*
Call Monitor	n/a	BNC single channel		n/a
USB	2.0 interface			
Hot-Swappable Bays	Yes			Yes (Optional SD Card)
Hard Drive Support	1 hot-swap 2.5" HDD (up to 500GB)	1 hot-swap 3.5" HDD (up to 1TB)		1 SD card, up to 32Gb with tamper resistant retention cover
Hard Drive Max	500GB	1TB		32GB SD card
Network Protocol	RJ45 socket, 10/100Mbps; 802.11 b/g WiFi with diversity antennas* TCP-IP/DHCP/PPPoE/DDNS/SNTP/POP3/HTTP/NTTP			10/100Mbps TCP-IP/DHCP/PPPoE/DDNS/SNTP/POP3/HTTP/NTTP
Audio Input	Per Channel line in vibration resistant locking Molex connectors-Interface cables to RCA-F supplied*			
Audio Output	1 front panel RCA line out	1 front panel RCA line out, 1 rear panel RCA line out		1 RCA line out
RS-232	Yes vibration resistant locking Molex terminal connector			
RS-485	Yes vibration resistant locking Molex terminal connector			n/a
Compression Format	H.264			
OS	Embedded Linux with special small monitor friendly GUI			
User Interface	Special Small Monitor Friendly GUI			
User Access	3 Levels of User Access Supported (Local/Remote)			
Mobile Viewing	Live view on PDA or smart phone browsers, plus various web browsers & MobileFocus FREE apps for iPhone & Android			
2x/4x Live/Playback Zoom	Yes			
Sub Stream Option	Yes (H.264/MJPEG)			
Playback Search	Time/date, Event, GPS			Time/date, Event, GPS
Event Log	Yes			
Watch Dog Timer	Yes			
Video Loss Detection	Yes			
2-Way Audio	Yes, via web interface			
Recording Mode	Continuous and Event			
Video Pause	Yes			
Remote Reboot	Yes			
Event E-mail Notification	Yes			
Language Support	English, Russian Traditional Chinese, Modern Chinese, French			
Alarm-In	6 alarm inputs	8 Alarm Inputs	12 alarm inputs	2 alarm inputs
Molex Connectors	Vibration resistant locking Molex connectors-Interface cables supplied			
Alarm-Out	2 alarm outputs (form "C"; contacts rated at 30V AC/DC @ 1amp- interface cables supplied)	2 alarm outputs (form "C"; contacts rated at 30V AC/DC @ 1 amp- interface cables supplied)		1 alarm output SPDT/ Form "C" (vibration resistant locking Molex connectors- Interface cables supplied)
G-Sensor	Embedded 3-axis G Sensor; data recorded; alarm if separate user limits for X/Y or Z axis exceeded			n/a
GPS Function	Optional External GPS Sensor for speed and geographic limit alarms (rectangular or circular fencing)			Embedded GPS Sensor for speed and geographic limit alarms (rectangular or circular fencing) GPS antenna included
Power Delay On/Off (mobile)	Yes			
Power Source	10V-36VDC input (vibration resistant locking Molex connectors)			
Temp (F I C)	-40°F~-131°F I -20°C~-55°C operating*	-40°F~-131°F I -10°C~-55°C operating*		-4°F~-131°F I -20°C~-55°C operating*
Dimensions (in I mm)	7.8" x 7" x 2" I 199 x 178 x 50mm	10.24" x 8.27" x 2.76" I 260 x 210 x 70mm		4.6" x 2.5" x 1.5" I 117 x 63 x 38.4mm
Certifications	CE, FCC, UL			



Mobile DVRs





Mobile Cameras

Mobile Cameras



EMW330
Outdoor Day/Night IR Wedge
Front/ Bottom View, 3.6mm Fixed
IP67 Weather Resistant

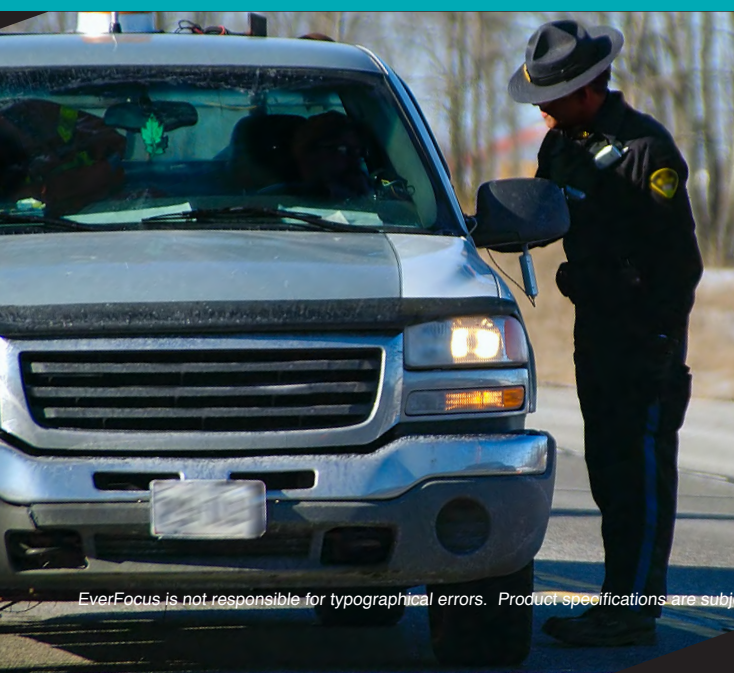
EMW330T
Outdoor Day/Night IR Wedge
Front View, 2.9-19mm
IP67 Weather Resistant



- EZ-PlateCam2**
Outdoor Long Range
License Plate Camera
- Vari-focal 5-50mm lens
 - High Resolution Technology with 600 TVL
 - Easy to use OSD setup menu
 - Cable Management bracket included
 - IP65 weather resistant
 - Capture range 16-65 Feet
 - Max Capture Speed 62 MPH
 - Built-in Heater
 - Special filter + IR LEDs deliver maximum legibility despite headlights & glare*

Part Number	EMW330 EMW330T
Pickup Device	1/3" Sony Super HAD CCD
Video Format	NTSC or PAL
Picture Elements (NTSC)	768 x 494 (NTSC)
Scanning System	NTSC: 525 TVL, 60 fields/sec. PAL: 625 TVL, 50 fields/sec.
Horizontal Resolution	520 TVL
S/N Ratio	Over 48 dB (AGC off)
Electronic Shutter	1/50 (1/60) - 1/100,000s
Video Output	BNC 1.0Vp-p, 75_
Gamma Correction	0.45
Lens Type	f=3.6 mm fixed board lens Varifocal f=2.9-10mm or f=9-22mm lens
Lens Options	Dual Position (end or side view option) Single Position (side view only)
BLC	Yes*
Gain Control	Yes*
White Balance	Yes*
Sync Mode	Internal Sync*
IR LED	40 IR LEDs
IR Wave Length	850 nm
IR Distance	Up to 15 meters / 50 ft
IR LED Lifespan	Up to 20,000 hours
IR Configuration	n/a
Environmental	IP67
Power Source	12VDC
Power Consumption	8.4W max (Heater On & IR LED On)
Operating Temp	-40°F~140°F
Weight (lbs)	1.32 lbs.
Vandal	Resistant
Heater	Yes
Certifications	CE, FCC, RoHS

Part Number	EZ-Platecam2
Pickup Device	1/3" Sony Super HAD CCD II
Video Format	NTSC or Pal
Picture Elements	811 x 508 (NTSC) 811 x 508 (NTSC)
Effective Pixels (NTSC PAL)	768 x 494 (NTSC) 752 x 582 (PAL)
Scanning System	2:1 Interlace
Scanning Frequency	15.734 KHz (H), 59.94 Hz (V) 15.625 KHz (H), 50 Hz (V)
Horizontal Resolution	600 TVL
Sensitivity IR on	0 Lux
S/N Ratio	Over 50dB (AGC off)
Electronic Shutter	1/10,000s
Video Output	BNC 1.0Vp-p 75Ω
Local Video Output	Local test output
Gamma Correction	0.45
Lens Type	5-50mm
Lens Options	Vari-focal lens
Sync Mode	Internal
IR LED	100 high illuminating LEDs
IR Wave Length	850nm
Capture Range	16-65 Feet. Maximum Captrue speed: 62 MPH Maximum angle between straight line and direction of travel: 20° horizontal 20° vertical
Negative Image	On/Off
Operative Modes	Installation/LPR
OSD Menu	Yes
Environmental	IP65 Weather Resistance
Power Source	12VDC/24VAC
Power Consumption	12VDC: 1.6A max 24VAC: 28W max
Operating Temp	14°F~122°F -10°C~50°C
Dimensions (in mm)	4.54" x 6.48" 115.2mm x 164.5mm
Weight (lbs gm)	4lbs 1800g
Mount	Mount Bracket Included
Certifications	CE/FCC





Monitors

- HDMI Series**
 - 17" & 19" Monitors
- SP Series**
 - 19" & 22" Monitors
- 1080 Series**
 - 22" Monitors



- EN7508 Series**
 - 8" Mobile Monitors



- HDMI Series**
 - New 10" & 15" Now Available!



- EN220 Series**
 - 5.6" Portable Test Monitor

Monitors



- LED Series**
 - 23" Monitors
- 1080p Series**
 - 26", 32", 42", 55" 65", 70" Monitors

Part Number	EN7517HDMI	EN7519HDMI	EN7519SP	EN7522SP	EN1080P22
Monitor Size	17"	19"			22"
Resolution	1280 x 1024 (SXGA)		1360 x 768	1920 x 1080	1920x1080
Viewing Line	570 TV Lines		420 TVL		650 lines (TVL)
Pixel Pitch	0.264mm	0.294mm	0.28		0.24825mm
Contrast Ratio	800:1		2000:1 (DCR)		1000 : 1
Response Time			5ms		
Viewing Angle	H: 170°, V: 170°		160 Degrees (H & V)		H: 170°, V: 160°
3D Comb Filter	3D		2D		3D
De-interlace & Noise Reduction	Yes		2D DE-INTERLACE		Yes
OSD	English, Spanish, French, German, Italian and Russian		5 keys		English, Spanish, French, German, Italian and Russian
Display Colors			16.7 million		
Speakers			2 each (3 watts)		
Video Inputs	HDMI (1), VGA (1), BNC (1), RCA (1)	HDMI (1), VGA (1), BNC (1)	BNC/VGA		HDMI, VGA, BNC, C VBS
Video Outputs	BNC (1)		BNC		BNC (1)
Audio Inputs			Stereo PC		
Audio Outputs	n/a				n/a
Mount Capability	VESA Size n/a/n/a		VESA Standard		
Power Consumption	<35 W, <1W (standby)		<25W	<35W	<42 W,<1W (standby)
Power Source	AC100-240V 60/50Hz		AC 100-240V~50/60Hz, 1.1A		AC100-240V
Dimensions (L x W x H)	20.39" x 18.31" x 6.5"	22.83" x 6.5" x 20.28"	17.5 x 7.5 x 13.8"	20.2 x 15.4 x 7.5"	23.5" x 5.75" x 14.25"
Dimensions (L x W x H) Without Stand	20.39" x 2.75" x 13.25"	n/a			20.5" x 2.5" x 12.25"
Weight	13.22 lbs	15.43 lbs	7.89 lb	9.7 lb	12.1 lbs
Operating Temp	5°C - 40°C/ 41°F - 104° F		50-104F / 10-40C		5°C - 40°C/ 41°F - 104° F
Certifications	CE, FCC, CB, UL(option)		FCC, CE		FCC, CB, and CE
Desk Stand	Removable Stand		Tilt stand		Removable Stand
Accessories Included	VGA Cord, PC Audio Cord, HDMI Cord		Power cord, audio cable, VGA cable, users guide		VGA Cord, PC Audio Cord, HDMI Cord

Power Supplies

Power Supplies



DC Master Power Supplies

- DCR4352UL** 12v, Master, 4 Ch., 4 AMPs
- DCR8352UL** 12v, Master, 8 Ch., 4 AMPs
- DCR882UL** 12v, Master, 8 Ch., 8 AMPs
- DCR1682UL** 12v, Master, 16 Ch., 8 AMPs
- DCR1622UL** 12v, Master, 16 Ch., 16 AMPs
- DCR18181U** 12v, Master, 18 Ch., 18 AMPs

AC Master Power Supplies

- AC412UL** 24v, 4 Ch., 4.2 AMPs
- AC812UL** 24v, 8 Ch., 4.2 AMPs
- AC822UL** 24v, 8 Ch., 8.4 AMPs
- AC1622UL** 24v, 16 Ch., 8.4 AMPs
- AC1642UL** 24v, 16 Ch., 16.8 AMPs



Plug-in Power Supplies

- AD1S** 12v, Plugin, 500 Mili-Amps, Slim
- AD1AS** 12v, Plugin, 1 AMP, Slim
- AD2F** 24v, Plugin, 500 Mili-Amps,
- AD4F** 24v, Plugin, 1.5 AMPs



BA-WB5

- Flush Wall Mount Bracket
- Ideal for LCD Displays up to 32"
- 75-100mm VESA compatible
- Supports up to 60 lbs of weight



BA-WB10

- Wall Mount with Tilt/Rotate Capability
- Ideal for monitor displays up to 24"
- 75-100mm VESA compatible
- Supports up to 40 lbs of weight
- 180° of left/right rotation
- 20° of up/down tilt



BA-WB30

- Swing-arm monitor mount
- Tilt/Swivel head for optimum viewing angle
- Ideal for monitor displays up to 24"
- 75-100mm VESA compatible
- Supports up to 30 lbs of weight
- 180° of left/right rotation
- 20° of up/down tilt



BA-WB71

- Wide screen wall mount bracket
- Ideal for monitor displays 32" - 42"
- Universal design (compatible with non-VESA)
- Lateral adjustment
- Supports up to 165 lbs of weight



BA-RMK08

- Universal Monitor Rack Mount
- Up to 35 tilt for adjustable viewing
- Adjustable depth from 1.45" - 3.14"
- Saves Rack Space
- Dual mount on any 8" - 9" LCD
- CTN dimension 20.3" x 8.7" x 3.6"
- Supports up to 20.4 lbs of weight
- Saves Rack Space



BA-CB42

- Ceiling Mount Bracket
- Ideal for monitor displays up to 10"-30"
- 75/100/200mm VESA compatible
- Supports up to 66 lbs of weight
- 180° of left/right rotation
- 20° of up/down tilt
- 24" - 35" pole adjustment length
- Solid Steel Construction

Mounts



EN1080P23LED	EN1080P26A	EN1080P32A	EN1080P42A	EN1080P42A	EN1080P65A	EN1080P70A
23"	26"	32"	42"	55"	65"	70"
1920x1080	1366x768	1366 x 768	1920x1080			
650 lines (TVL)	600 lines (TVL)			800 lines (TVL)		
0.2655mm	0.4215mm	0.51075mm	0.4845mm	0.6mm	.66mm	.73mm
1000 : 1			2500:1	3500 : 1	2500:1	1450 : 1
			6.5ms	8ms		5ms
H: 170°, V: 160°	H: 160°, V: 150°	H: 178°, V: 178°				
3D						
Yes						
Portuguese, English, Spanish, French, German, Italian, and Russian						
16.7 million						
2 each (3 watts)	2 each (10 watts)					
HDMI, VGA, BNC, C VBS	BNC (2), VGA (1), S-Video (1), HDMI (1)					
BNC (1)	2 BNC					
1 input	2 Inputs					
1 output	2 outputs					
100x100mm	406*100mm	380*100 mm	646.75*100 mm	760*300mm	393.95*592.8mm	1219.5*(491.5 +419.5) mm
≤40W,≤1W(standby)	≤140W	<170 W	<260 W	<400 W	≤500W	≤800W
AC100-240V				AC110-240V	AC100-240V	
225 x 215 x 70mm	440 x 370 x 75mm	38.2" x 11.8" x 26"	44.1" x 11.8" x 30.7"	58.7" x 11.8" x 37.8"	n/a	
565 x 340 x 46mm	659 x 408 x 102mm	782 x 479 x 112mm	1017 x 608 x 115mm	1323 x 794 x 129mm	1540 x 915.92 x 133.3mm	1633.4 x 967.4 x 187.5mm
6.5kg	10kg	55.1 lbs.	77.2 lbs.	121.3 lbs.	134 KG	138 KG
0°C~40°		0°C - 40°C/ 41°F - 104° F			0°C~40°	
FCC, CB, CE, ROHS				ROHS		
Stand and wall-mount bracket for option		Stand and wall mount bracket optional			Stand and wall-mount bracket for option	
Remote control and user guide, power cord, HDMI cord						

Standard & Megapixel Lenses



FL Series



EFV Series



Megapixel Series

Board Lenses

FL2520	2.5mm Board Lens
FL3620	3.6mm Board Lens
FL4320	4.3mm Board Lens
FL6020	6mm Board Lens
FL8020	8mm Board Lens
FL1220	12mm Board Lens
FL1620	16mm Board Lens

VariFocal Lenses

EFV2812DC	2.8-12mm, Auto-Iris Lens
EFV358	3.5-8mm Lens
EFV358DC	3.5-8mm, Auto-Iris Lens
EFV550	5-50mm Lens
EFV550DC	5-50mm, Auto-Iris Lens

Megapixel Lenses

EFV-410DCMP	4.5-10mm 1/2" Megapixel Auto-Iris Lens
EFV-880DCMP	8-80mm 1/2" Megapixel Auto-Iris Lens
EFV-M0940DCIR	9-40mm 1/2" Megapixel Auto-Iris Lens
EFV-M1803DCIR	1.8-3mm 1/2" Megapixel Auto-Iris Lens, WITHOUT FISH EYE Distortion!!!



MP Lenses



Standard Lenses

HDcctv Accessories

HDcctv EASILY Connects with Standard Coax

For Distances Over 500 Feet Choose A Simple Option to Extend Your Range & HD Features



EHACRX/RPT
Front



EHACRX
Back



EHARPT
Back

HDcctv Acc.



Mounting Brackets

BA01	Box Cameras: Aluminum Bracket, 6.1" x 1.77" for box cameras
BA03	Box Cameras: Plastic Bracket 4.72" x 6.1" x 3.5" for box cameras
BA05	Aluminum Mounting Arm for use with the FH-7153 Series Housing
FH7153	Box Cam Housing, 5.23" x 4.17" x 12.79"
FH7153HB	Box Cam Housing with Heater and Blower, 5.23" x 4.17" x 12.79"
FHB300	Box Cam Housing & Mount Combo (FH-7153 & BA-05)
FHB300HB	Box Cam Housing w/ Htr & Blower & Mount Arm (FH-7153HB & BA05)
BAED01	L-Bracket, Beige, for ED335/EDH5240
BAEDB	L-Bracket, Black, for ED300/350 Domes
BAEDMS	L-Bracket, Silver, for ED550/560/610/EHH5200 Domes
BAEDW	L-Bracket, White, for ED300/350 Domes
BAEHD	L-Bracket, Beige, for EHD Series (does NOT work with EHD500IR)
BAEHD2	Wall Mount for EHD500IR/EHD700/EHD730 (Part Number Formerly BA-EHD500IR)
BAEHD3	Wall Mount for EHH5040/EHH5241
EZCMB	J-Bracket Ceiling Mount, Silver, for EZ650/850
BA10	Ceiling Mount Bracket, White, for EPD200, 24.56 inches
BA11	Ceiling Mount Bracket, White, for EPD200, 11.81 inches



Mounting Brackets



PTZ Accessories

PTZ Accessories



EKB500
Multi-Function
Keyboard



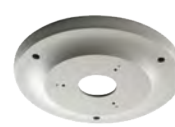
EPTZ-PBOX
External Power
Connection Box



EPTZ-PLM
Pole Mount
Adaptor



EPTZ-SSM
Outdoor
Sun Shield



EPTZ-CMB
Concrete Ceiling
Mount Adaptor



EPTZ-BKA
Wall/Pendent
Mount Adaptor



EPTZ-WMB
Wall Mount
Bracket



EPTZ100-WLM
EPTZ100
Wall Mount



EKB200
USB Control
Keyboard



EDA997A
RS-485
Unidirectional Data
Dist/Converter



ESDA-1000
Step Down
Adaptor



EPTZ-ICM
Flush
Ceiling Mount



EPTZ-CLM
Ceiling
Pendent Mount



EPTZ-PBM
EPTZ
P-Box Adaptor



EPTZ-CNM
Corner Mount
Adaptor



EPTZ100-CPN
EPTZ100
Pendant Mount

New NAV IP Access Control Series



EFC301
NAV Series TCP/IP
Standalone
Network Access
Controller

- Network access is based on CAT-5, which can be used for communication (10M/100M Ethernet) and Power over Ethernet (POE)
- Mainstream web browser is used to access remote equipment and perform control and administration; no additional software is required
- SSL ensures secure web browser access
- Supports multiple languages
- Supports online system upgrade
- Manages up to 100,000 cards, and 1 million event log entries
- Supports real-time event logging
- Feature-rich mgmt functions: Capable of conducting access administration based on time, date, location, and cardholder's access privileges.
- Powerful alarm connectivity functions for the ARM/DISARM of controlled areas; the triggering of a fire alarm will effect controls to the appropriate door areas, which provides convenient connectivity
- Flex II Software allows management of multiple IP readers



EFC302
NAV Series 2-8 Door
TCP/IP Network
Access Controller

- Embedded Linux operating system, with built-in database engine
- Web browser is used to access remote equipment and perform control and administration; no additional software is required
- Manages up to 31 Flex Series controllers via built-in multiple controller access control system software
- SSL encryption ensures secure web browser access
- Supports automatic backup and upgrade via network and USB 2.0
- Capable of managing up to 100,000 cards
- Supports 1 million event log entries
- Supports up to 2,048 access control groups and 2,048 types of access control plans
- Supports up to 12 access control modes
- Supports card special/control group special access control modes
- Each door supports 10 independent date configurations (from Sunday to Monday and 3 customized date settings), with Each day broken down into 10 time segments
- Supports expiration, password, anti-passback & first card access
- Equipped with features such as anti-passback, anti-duress, and simultaneous locking



Access Control



EBC910R
NAV Series TCP/IP
Standalone
Network Fingerprint
Access Controller

- Feature-rich management functions: capable of conducting access administration based on time, date, location, and cardholder's access privileges
- Powerful alarm features: connectivity with the alarm server for the ARM/DISARM of controlled areas; the triggering of a fire alarm will effect controls to the appropriate door areas, which provides convenient connectivity
- The protective features of TVS safeguards the fingerprint unit against damage resulting from transient high voltage
- Network access is based on CAT-5, which can be used for communication (10M/100M Ethernet) and Power over Ethernet (POE)
- Mainstream web browser is used to access remote equipment and perform control and administration; no additional software is required
- Embedded Linux operating system: installation of additional software not required to operate and administer the system and controllers
- Operates via DHCP and static IP, which is a plug-an-play feature
- Easy to use: the keyboard on the controller can be used to conduct simple config tasks
- A single unit that reads cards, scans fingerprints, and provides access control



Card Reader
ERR871: ID Card Reader
ERR881: Mifare/Felica
Multi-protocol Card Reader



Slender Card Reader
ERM871: ID
ERM881: Mifare



LCD Keyboard Card Reader
ERL871: ID LCD
ERL881: Mifare LCD



Keyboard Card Reader
ERK871: ID LCD
ERK881: Mifare LCD



USB Desktop Card Reader
ERU171: ID (ID Card)
ERU181: Mifare (IC Card)
ERU182: Mifare (CUP Card)



Desktop Card Reader
ERS871: System USB to RS485

Enterprise Web Interface

ENS2000: NAV Series WEB Network Access Control Management Software



- WEB-based networks, which enable cross-network and cross-regional control and administration via Wide Area Network and the Internet
- Independently operating hierarchical structure design may be employed for the terminal and stations to achieve more stable system operation.
- User-friendly real-time electronic map displays for door and controlled areas
- All-new graphical icon design for an easy user operation experience
- Supports arbitrary re-sizing of windows and customized menus
- Supports anti-duress password access function
- Supports multiple languages such as Chinese and English
- Quick configuration for entrances/exits, alarm zones, card readers, etc.
- Supports multiple shifts and attendance management for multi-day shifts
- Attendance management functions are practical, easy-to-use, and contain a wide range of features.
- Administers ELA82x, ELA85x, Flex I, and Flex II series of access controllers

EverFocus Electronics Corp. USA

California Office:

1801 Highland Avenue Unit A
Duarte, CA 91010
Tel: 626-844-8888
Fax: 626-844-8838

New York Office:

415 Oser Avenue Unit S
Hauppauge, NY 11788
Tel: 631-436-5070
Fax: 631-436-5027

info@everfocus.com
www.everfocus.com



EverFocus Electronics Corp. Global

Headquarters:

12F, No.79 Sec. 1
Shin-Tai Wu Road,
Hsi-Chi, Taipei, Taiwan
Tel: +886 (0) 2-26982334
marketing@everfocus.com.tw
www.everfocus.tw

Germany Office:

Albert-Einstein-Strasse 1,
D-46446 Emmerich, Germany
Tel: +49 (0) 2822-93940
info@everfocus.de
www.everfocus.de

China Office:

Room 609, Technology Trade Bldg,
Shangdi Information Industry Base,
Haidian District, Beijing, China
Tel: +86 (0) 10-62971096
marketing@everfocus.com.cn
www.everfocus.com.cn

Japan Office:

Kinshicho City Building 5F,
2-13-4 Koto-bashi
Sumida-ku, Tokyo, 130-0022, Japan
Tel: +81 (0) 03-5625-8188
info@everfocus.co.jp
www.everfocus.co.jp

India Office:

Suite #803, Housefin Bhavan,
C-21, Bandra Kurla Complex,
Bandra (East), Mumbai-400 051, India
Tel: +91 22 61288700-704
www.everfocus.in

United Kingdom Office:

Unit 12 Spitfire Business Park Hawker Road
Croydon, CR0 4WD, United Kingdom
Tel: +44 (020) 8649-9757
basil@sctltd.co.uk
www.uk.everfocus.com