

ENFORCER 3X Camera Series

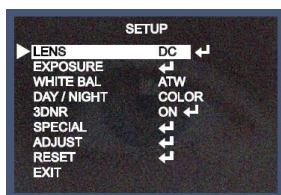
EV-1626-NKGQ – 2.8~12mm

EV-1626-NWGQ – 6~50mm

The ENFORCER 3x series provides the functions of three different cameras in one model. Infrared LEDs, Digital Noise Reduction (DNR) and Wide Dynamic Range (WDR) combine to produce crystal clear image poor lighting conditions.

Features:

- ▶ 1/3" Sony Super HAD II CCD
- ▶ 3 Cameras in 1:
 - **IR LED:** 14 Infrared LEDs allow the camera produce a clear picture in total darkness
 - **DNR:** Cleans up the image and saves disk space by reducing camera noise
 - **WDR:** Captures a clear picture where strong backlighting occurs
- ▶ Digital Slow Shutter (DSS) amplifies existing light to capture images in almost total darkness
- ▶ **0.000006-lux** with LEDs ON
- ▶ Dual voltage: 12VDC or 24VAC
- ▶ 600 TV lines in color or black and white
- ▶ On-Screen Display (OSD) for convenient programming of features such as:
 - Motion detection highlights moving objects
 - High Spotlight Back Light Compensation (HSBLC) function to black out bright areas on screen

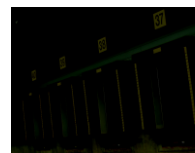


Features can be easily
programmed with the
OSD menu



IR LEDs

IR LEDs Off



IR LEDs On



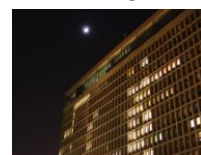
Produces a clear image in
total darkness

Digital Noise Reduction (DNR)

DNR Off



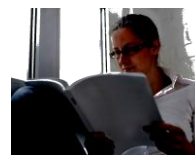
DNR On



Cleans and sharpens images by
reducing camera noise

Wide Dynamic Range (WDR)

WDR Off



WDR On



Captures a clean, high resolution
image, even with strong backlight

ENFORCER® Video

Specifications:

		EV-1626-NKGQ	EV-1626-NWGQ
CCD		1/3" SONY Super HAD II CCD	
Resolution		Color: 600 TV Lines B/W: 600 TV Lines	
Pickup Elements		768x494 pixels	
Video Output / Service Monitor Port		Composite video 1.0Vp-p into 75Ω + test connection	
Video Output Format		NTSC	
Lens (DC Auto Iris)		2.8~12mm	6~50mm
Minimum Illumination	LEDs ON	0.000006-lux	
	LEDs OFF	0.05-lux	
S/N Ratio		>52dB (weight on)	
On Screen Display (OSD)		Built-in and controlled by internal joystick	
Motion Detection		4 zones	
Backlight Compensation		HLC/BLC/Off	
White Balance		ATW / AWC / Manual (1800°~10,500° K)	
Electronic Shutter		Auto/Manual (adjustable range: 1/60~1/120,000 sec)	
Auto Gain		Low / Middle / High / Off	
3-DNR (DNR with 3D filtering)		On / Off (adjustable range: 0~100)	
Wide Dynamic Range (WDR)		Outdoor / Indoor / Off	
Day & Night (Color)		Color/ Auto / B/W	
Sharpness		On / Off (adjustable range: 0~31)	
Privacy		On / Off (8 programmable zones)	
IP Rating		IP66	
# of Infrared LEDs		14 (850nm)	
Power Source		12VDC / 24VAC Dual Voltage	
Current Draw	12VDC	200mA(LEDs off), 310mA (LEDs on)	
	24VAC	2W (LEDs off), 3W (LEDs on)	
Operating temperature		14°~122° F (-10°~50° C)	
Dimensions (LxWxH)		7" x2 3/4" x3 1/2" (180x70x90 mm) (with sunshield)	
Weight		18-oz (500g)	

Dimensions:

