

ETP-SMH – Hooded Surface Mount Accessory

Description

Attractive, attention-getting, weather-protective stainless steel hooded mount for any 400-Series flush mounting Emergency Phone


Features

- Durable housing with weather-protective hood suitable for mounting on outdoor wall or pole
- Constructed of vandal-resistant stainless steel
- Standard in brushed-finish stainless steel
- "Emergency" wording on the sides also available as "Help" or "Info"
- Custom lettering, signage and color choices are available



Shown with **ETP-400D**

Specifications

Construction:	Stainless Steel (14 AWG)
Dimensions:	10.6(269) W x 12.75(324mm) H x 6.3(160) Top D 4.4(112) Bottom D in(mm)
Weight:	13 lbs. (5.9 kg)
Conduit Entry:	0.88" (22mm) hole on bottom and rear also available on top
Compliance:	CSA Certified to UL Standard 60950 

Options & Accessories

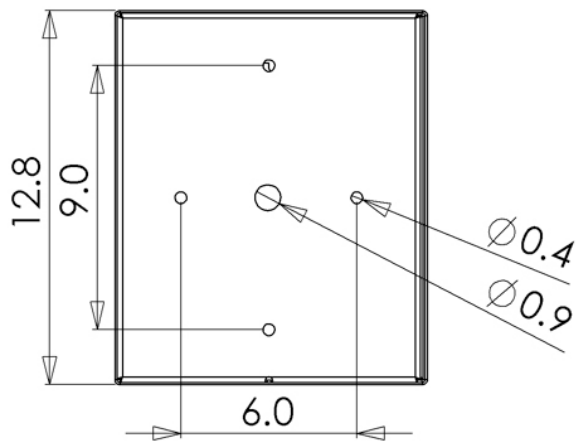
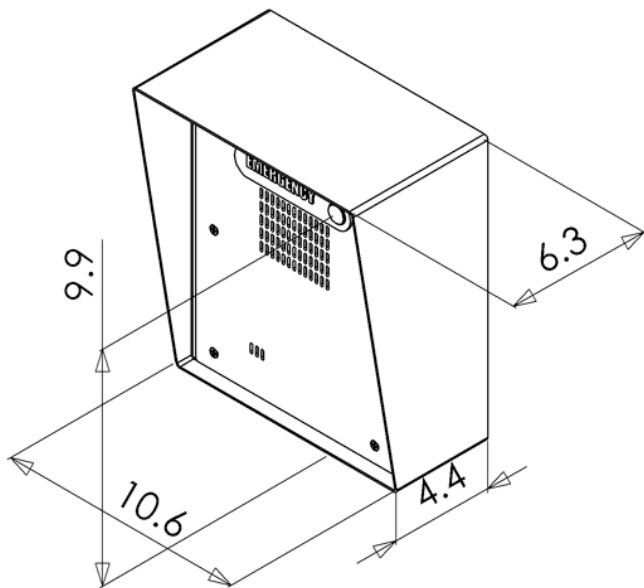
Poll Mounting Kit:	Model ETP-PMKT is a kit for strapping Surface Mount to a poll
Heater:	When snow and ice build-up are a concern, add the word "HEATER" to the model number of your Emergency Phone for a built-in faceplate heater

Alternate Surface Mounts

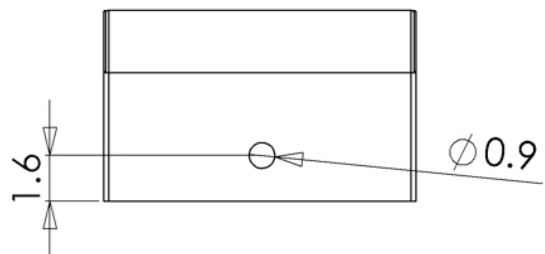
Surface Mount:	Model ETP-SM is a standard surface mount without a hood
Lighted Surface Mount:	Model ETP-SML includes a weather-protective hood and a lighted translucent EMERGENCY sign and faceplate
Double Surface Mount:	Model ETP-SMD includes a second opening for a directory or other device

ETP-SMH – Hooded Surface Mount Accessory

Dimensions



Back View



Bottom View

All dimensions are in inches
Tolerance = ± 0.01 in.