

## EntraPass Corporate Edition

### High Performance Access Control and Integrated Security System

#### Features That Make a Difference:

- Supports up to 20 workstations and controls thousands of doors
- Integrates with American Dynamics® digital video management systems<sup>1</sup>
- Supports Kantech™ IP Link which provides a secure IP solution to operate your access control system more efficiently and securely over a network
- EntraPass workspaces let you control what operators can see based on user privileges
- Update card records quickly and securely with the new EntraPass WebStation
- Display live video, play back recorded video, dispatch, log, and locally save recorded event video
- Eight operator-configurable desktops with unlimited interactive floor plans provide a highly customized experience for each workstation
- Interface with paging systems, HVAC systems and more with innovative SmartLink feature
- Integrated badging solution
- Elevator control for up to 64 floors
- Network-ready architecture lets you easily manage sites remotely
- Supports remote management from central monitoring stations (Managed Access Control)
- Redundancy server and Card Gateway (Oracle/MS SQL HR interface) ensure that critical data is secure even in the event of communication failure (optional)

Kantech EntraPass Corporate Edition is a powerful, multi-user access control system that provides features required even in the most demanding applications. The software adapts easily to meet the needs of growing businesses, allowing users to manage one building or access multiple remote sites from a network.

EntraPass Corporate Edition is extremely easy to install. Express Setup automatically defines all the necessary system components. This innovative feature reduces the time required to configure the system and eliminates programming errors.

EntraPass Corporate Edition distributed system architecture supports connections to remote sites using direct connections,

dial-up modems, and TCP/IP communication servers using Kantech IP Link (using Corporate Gateway). Kantech IP Link provides secure communication via 128-bit AES encryption. IP Link is also beneficial to the network infrastructure since communications are sent over the network only since required, keeping network traffic down to a minimum.

EntraPass integrates with the American Dynamics Intellex® Digital Video Management System<sup>1</sup> and the American Dynamics EDVR Digital Video Recorder<sup>2,3</sup>. This video integration dramatically increases security by allowing visual observations of monitored areas and allowing security personnel to link an access control event to a video clip directly from their access control application.

(1) Intellex IP and Ultra supported in 2CIF configuration

(2) Requires v3.1 or higher for Intellex Ultra, DVMS, IP, v2.6 or higher for Intellex LT, and EDVR v1.53

(3) EDVR supported in LAN configuration. A free workstation license to operate and configure multiple EDVRs from a separate PC is provided on the EntraPass CD.

# features

## Kantech IP Link Provides Secure and Affordable Access Control over the Network

EntraPass supports Kantech IP Link which provides a secure and affordable way to manage your access control system over a network. IP link manages polling of door controllers and communicates with EntraPass Corporate Edition only when an event has occurred. This significantly reduces the amount of bandwidth required for your customers to manage their access control system over a network. IP Link uses 128-bit AES encryption to communicate with the system which ensures secure communication when used over the Internet.

## Simplify and Improve System Management

EntraPass workspaces provide customized views of the EntraPass system based on an operator's access privileges. Each workspace is created and defined in terms of devices – gateways, sites, doors, relays, etc. and is configured to identify what areas of the EntraPass system the operator can access and view, such as desktop display, card fields, etc. Workspaces enable you to create different views of the EntraPass system that can be saved and applied to any user.

This feature also lets an operator further create and refine his or her own views to filter additional components that are not necessary for his or her day-to-day operation. The operator can create, save, and reuse temporary workspaces. This feature is useful whenever a recurring operation is needed on the system such as creating reports.

Workspaces can also be applied to desktops to specify which events and messages can be displayed on a particular PC. An installer can use such a workspace in addition to an operator workspace to filter messages during a customer installation.

## Manage Card Records Remotely

Easily manage card records over the web using the EntraPass WebStation. The optional web interface provides remote access to create, modify, and delete card records without installing and maintaining additional workstations.

## SmartLink for Simple and Advanced System Integration

SmartLink is an application that enables any third party application or database to automatically interact with the EntraPass system. SmartLink uses built-in macros to help you design the most commonly requested integrated applications such as CCTV multiplexers, paging systems, automated emails, HVAC systems, etc., by using an RS-232 or network connection between the system and the third-party device.

For advanced system integration, SmartLink enables communication with software applications such as time and attendance, badging, human resource management, student registration and more through Ethernet, an RS-232 port, API or with DLLs. This allows complete and real-time data exchange between systems, eliminating duplicate data entry.

## The Benefits of Video Integration<sup>4</sup>

Integration with an American Dynamics Intellex Digital Video Management System provides real-time video monitoring as well as video play back of critical access events. Video can be linked to access control events and recorded from different Intellex units simultaneously. Presets, sequences, dome control, and 1x1, 2x2, 3x3, and 4x4 views are available through the EntraPass software. All cameras can be called up directly from a floor plan simply by double-clicking on the camera or dome icon. Or, choose the American Dynamics EDVR Digital Video Recorder which provides your customers with an integrated video solution with a solid feature set at an economical price without compromising video quality.

## EntraPass Video Vault

Installed on your network, the optional EntraPass Video Vault offers an alternative to manually saving each video clip one by one. Simply pre-define groups for your video clips (such as door forced or rejected card) and EntraPass Video Vault saves them to the appropriate group based on whatever schedules you choose. You can also pre-designate which file type you want video clips saved as – .KVI, .KVA, .IMG, or .AVI – and whether these files, if .KVI or .KVA, are assigned password protection. You can also organize your video clips using thumbnail .BMP images in lieu of icons.

(4) Video integration supported on Windows® 2000, XP, 2003, Standard or Enterprise server

# take a closer look

## Redundancy Server

EntraPass Corporate Edition offers an optional redundancy server with a mirror database to monitor all data activity on your primary EntraPass server and creates a real-time copy of the system database. In the event of primary server failure, the mirror database automatically launches the redundancy server which supports all the features and functionality of the primary server. Once the primary server returns online, all archives are merged and/or the entire database is copied from the redundancy server.

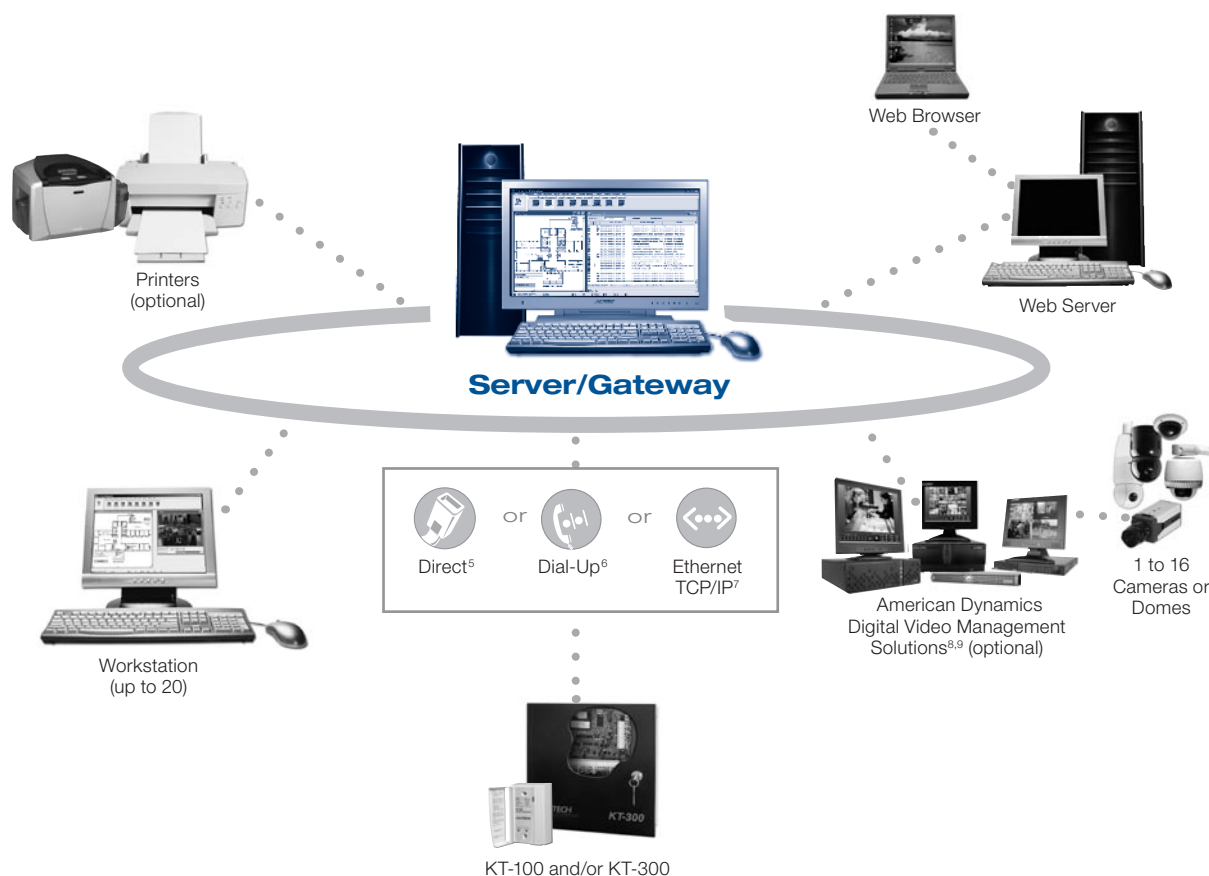
## Managed Access Control

With the addition of account management, EntraPass WebStation, and Kantech IP Link support, EntraPass now provides a high-performing Managed Access Control solution ideal for central monitoring stations seeking a cost-effective option to offer to their commercial customers.

EntraPass supports the range of advanced solutions that central monitoring stations offer including access control, video surveillance, intrusion detection, and security management (guard tours, remote video management, video/alarm verification). With these advanced features, the Kantech EntraPass solution readily provides tremendous performance and value to monitoring stations and their customers.

## Basic System Diagram

EntraPass Corporate Edition is a comprehensive, multiple workstation solution for access control installations from one to thousands of doors. This proven platform supports up to 544 sites per gateway (32 local and 512 remote) and provides the ultimate balance between power and affordability in a network environment. EntraPass Corporate Edition is compatible with Kantech's complete line of door controllers, which can be configured with up to 32 controllers per loop and 17,408 controllers per gateway.



(5) Direct: KT-300, via RS-232 or RS-485 with USB-485 or VC-485 converter; KT-100 via RS-485 with USB-485 or VC-485 converter

(6) Dial-up: KT-300 only, using RS-232 serial modem at remote site (KT-100 needs to be connected to a KT-300)

(7) Ethernet TCP/IP: using Kantech IP-Link (KT-100 also requires VC-485 converter)

(8) Requires v3.1 or higher for Intellex Ultra, DVMS, IP, v2.6 or higher for Intellex LT, and EDVR v1.53

(9) Video integration supported on Windows 2000, XP, 2003, Standard or Enterprise server

### EntraPass Corporate Edition System Capacities

Cards	Unlimited
Card Families or Site Codes	Unlimited
Door Controllers	17,408 per gateway
Card Readers	34,816 per gateway
Keypads	34,816 per gateway
Monitored Points (Inputs)	278,528 (KT-300)
Auxiliary Outputs for Reader	
LEDs and Door Alarms	69,632 (KT-300)
Elevator Floors per Cab	64
Card User Access Levels	250 per site
Access Level Combinations	Unlimited
Schedules of Four Time Zones Each	100/site
Holidays	366 per system
Operator Workstations	20
Gateways	41
System Operator Passwords	Unlimited
Operator Security Levels	Unlimited, pre-defined (3)
Concurrent Operator Languages	Two
Number of Printers	One per workstation
Serial Port / USB	Max. 32 per gateway
Remote Sites	Max. 512 per gateway

### Recommended Computer Requirements for EntraPass Server<sup>10</sup>

Processor	Pentium® IV, 1.8 GHz
RAM	1 GB
Free Hard Disk Space	
Required for Software	20 GB
Screen Resolution	1024 x 768
Graphic Adaptor Card	32 MB
Color Depth	24-bit (16 million colors), required for video integration only
DVD/CD-ROM Drive	48x
Network Interface Card	10/100Base-T
Operating System Compatibility	Windows 2000, XP, 2003 Standard or Enterprise server, Windows Vista <sup>11</sup>

### Model Number Package Includes:

License for EntraPass Corporate Edition software which enables one server workstation and two additional workstations, plus a Corporate Gateway and CBLK-10 cable kit.

E-COR-EN-V4	EntraPass Corporate Edition v4.0 software - English
E-COR-SP-V4	EntraPass Corporate Edition v4.0 software - Spanish
E-COR-FR-V4	EntraPass Corporate Edition v4.0 software - French

### Manuals Only:

E-COR-MAN-EN	EntraPass Corporate Edition v4.0 English manual
E-COR-MAN-SP	EntraPass Corporate Edition v4.0 Spanish manual
E-COR-MAN-FR	EntraPass Corporate Edition v4.0 French manual

E-COR-UPG-EN-V4	Upgrade for EntraPass Corporate Edition v3.x to v4.0 with English manual
E-COR-UPG-FR-V4	Upgrade for EntraPass Corporate Edition v3.x to v4.0 with French manual

### Accessories:

E-COR-WEB-1	One concurrent EntraPass Webstation connection license for EntraPass Corporate Edition v4.0
E-COR-WEB-3	Three concurrent EntraPass WebStation connection licenses for EntraPass Corporate Edition v4.0
E-COR-WS6	Six additional workstation licenses for EntraPass Corporate Edition v3.0 and higher
E-COR-COM	40 additional Corporate Gateway licenses for EntraPass Corporate Edition v3.0 and higher
E-COR-VVM	Video Vault license for EntraPass Corporate Edition v3.0 and higher
E-COR-RDN	Redundancy server license for EntraPass Corporate Edition v3.0 and higher
E-COR-SQL	Card Gateway license for EntraPass Corporate Edition v3.0 and higher
E-COR-MAC	Account Management (Managed Access Control) license for EntraPass Corporate Edition
E-COR-KTK-1	One Kantech token for EntraPass Corporate Edition
E-COR-KTK-2	Two Kantech tokens for EntraPass Corporate Edition
E-COR-KTK-3	Three Kantech tokens for EntraPass Corporate Edition
E-COR-KTK-5	Five Kantech tokens for EntraPass Corporate Edition
E-COR-KTK-10	10 Kantech tokens for EntraPass Corporate Edition

(10) Actual requirements may vary based on your operating system and configuration.

(11) Video functionalities are not supported with Windows Vista.

Product offerings and specifications are subject to change without notice. Actual products may vary from photos. Not all products include all features. Availability varies by region; contact your sales representative. Certain product names mentioned herein may be trade names and/or registered trademarks of other companies.

© 2008 Tyco International Ltd. and its respective companies. All rights reserved. KT0098-DS-200804-R02-LT-EN