

# DXC-C33/C33P

## 3CCD Color Video Camera

Ideal for use in space-limited locations, the DXC-C33/C33P incorporates one of the smallest/lightest camera head units featuring a 1/3 type 3CCD. In spite of its compact and lightweight camera head unit, this model inherits the superb picture quality of the DXC Series. The DXC-C33 boasts a horizontal resolution of 850 TV lines and minimum illumination of 2000 lux at F8. Various features such as DynaLatitude™ and Partial Enhance are incorporated in this model.

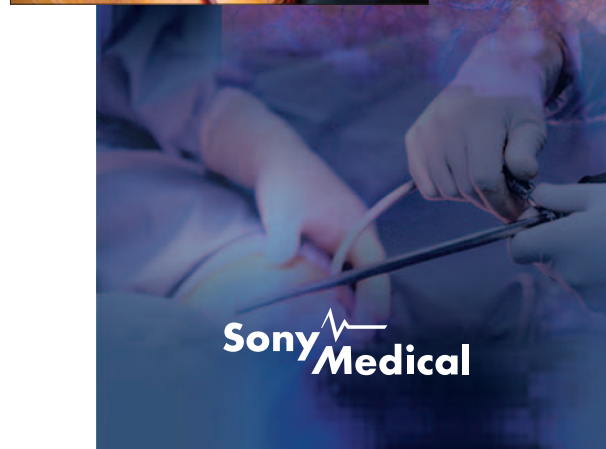
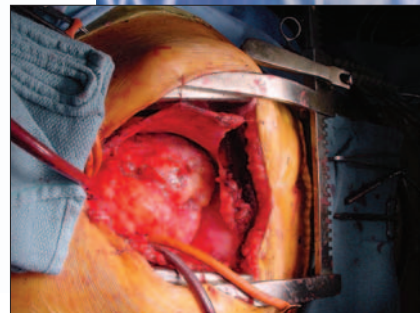
A first for the DXC Series and for 3CCD small head cameras, the DXC-C33/C33P is equipped with a DV output terminal. Thanks to the DV output terminal, video signals can be recorded directly to i.LINK™ interface-equipped VTR with no quality deterioration.

With excellent features and UL-2601 medical approval, the DXC-C33/C33P is the right choice for medical, research and industrial microscopy applications.



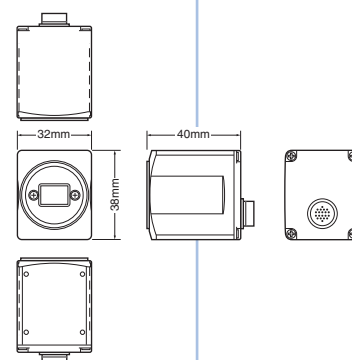
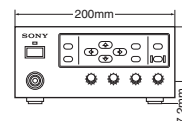
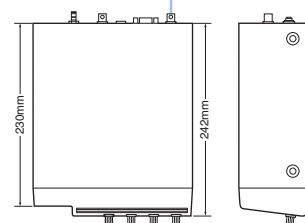
DXC-C33/C33P

- Small Camera Head  
32 (W) X 38 (H) X 40 (D) mm  
1 5/16 X 1 1/2 X 1 5/8 (inches)
- High Picture Quality
- i.LINK (i) Out
- 10 Bit DSP
- DynaLatitude —  
Effectively increases contrast
- Frame Memory
- Partial Enhance —  
Allows detail alteration to a  
selected color
- User-Friendly Control Panel
- 2 AE Areas Preset
- RS-232C Interface
- External Synchronization  
(HD/VD, VBS)
- Scene Files



## DXC-C33/C33P

Pick-up Device	1/3 type IT (Interline Transfer) CCD
Effective Picture Elements	NTSC: 768 (H) x 494 (V), PAL: 752 (H) x 582 (V)
Scanning System	NTSC: 2:1 interlaced, 525 lines, PAL: 2:1 interlaced, 625 lines
Horizontal Frequency	NTSC: 15.734 kHz, PAL: 15.625 kHz
Vertical Frequency	NTSC: 59.94 Hz, PAL: 50 Hz
Sync System	Internal or External with VBS or HD/VD
Horizontal Resolution	850 TV lines
Lens Mount	C mount
Flange Back	17.526 mm in air
Sensitivity	F8.0 at 2000 lux (3200 K)
Minimum Illumination	4 lux (F2. GAIN: HYPER)
S/N Ratio	NTSC: 62 dB (Typical), PAL: 61 dB (Typical)
Gain	STEP/AGC/HYPER selectable, STEP: 0 to 24 dB by 1 dB step AGC: 0 to 24 dB (Limit value: 6 dB, 12 dB, 18 dB, 24 dB selectable) HYPER: 30 dB
Electronic Shutter	8.0 to 1/100,000 s
Lens	Manual Iris
AE Area	Multi/Large/Medium/Spot/Slit/Manual selectable
AE Level	Variable
AE Speed	Fast/Mid/Slow selectable
AE Detect	Average/Peak selectable
Gamma	ON/OFF (Variable at ON)
White Balance	AWB/ATW NORMAL/ATW WIDE/MANUAL/3200 K/5600 K selectable AWB or ATW R/B Paint, MANUAL R/B Gain
ATW Area	NORMAL/MANUAL selectable
ATW Speed	FAST/NORMAL/SLOW selectable
CCD Integration Mode	FIELD/FRAME selectable
Trigger Polarity	Positive edge trigger/Negative edge trigger selectable
Sync	RGB/G/OFF selectable
User File	A/B switchable (Two pattern memories)
Output Signal	i.LINK (DV): IEEE1394 Based, VBS: 1.0 Vp-p, 75Ω, sync negative RGB: 0.7 Vp-p, 75Ω, sync switchable, SYNC: 2Vp-p, 75Ω Y: 1.0 Vp-p, 75Ω, C: NTSC 0.286 Vp-p, 75Ω, without sync PAL 0.3 Vp-p, 75Ω, without sync
Operating Temperature	-5 to 45°C (23 to 113°F)
Power Supply	100 to 240 V AC, 50/60 Hz
Power Consumption	Max. 18W
Weight	CHU: 48 g (1.7 oz), CCU: 2.5 kg (5 lbs 8 oz)
Required Accessories	CCMC-20P05/20P10/20P30, 20-pin Multi cable (5/10/30 m)

DXC-C33/CHU  
Back Panel

DXC-C33/C33P CCU Back Panel

SONY

Sony Electronics Inc.  
1 Sony Drive, Park Ridge, NJ 07656

www.sony.com/medical