

2-LINE CORDLESS SYSTEM!



KX-TG6700B 5.8GHz Digital 2-Line Expandable System

- Caller I.D.
- User selectable voice mail with 60-minutes recording
- True Voice Paging
- Handset Speakerphone
- Lighted keypad
- Black Only

Expands up to 8 handsets

KX-TGA670B Expansion Handset

2-LINE CORDLESS SYSTEM!



KX-TG5480-S 5.8GHz Digital 2-Line Cordless with Dual Keypads

- 2-Line, 15 minute user selectable voice mail
- Caller I.D./I.Q.
- Talking Caller I.D.
- Lighted Handset Antenna
- Dual Keypads
- Handset Speakerphone
- Headset Jack
- Voice Enhancer
- Silver Only

4-LINE CORDLESS SYSTEM!



KX-TG4500B 5.8GHz Digital 4-Line Expandable System

- Caller I.D.
- User selectable voice mail with auto attendant and 100-minutes recording
- 8 mailboxes • Time/Date stamp
- Handset Speakerphone
- Call transfer • Message transfer
- Lighted keypad • Black Only

Expands up to 8 handsets

KX-TGA450B Expansion Handset

3-LINE CORDLESS SYSTEM!

KX-TH102-C

2.4GHz 3-Line Digital Expandable Cordless System with Cellular Convergence and Video Capability

- Cellular convergence
- Handles **2 phone lines & 1 cellular line**
- Expandable up to 8 handsets (Combination of handsets and Bluetooth devices)
- All-Digital TAD with 60 minutes recording time, voice menu with time/day stamp and remote control from outside CO or handset
- Call Waiting Caller I.D. • Ringer I.D. • Light up I.D. • Picture I.D.
- Icon operation • Light up indicator with ringer/message alert
- USB port for downloading ringers and more
- Voice Enhancer Technology • RJ11 phone jacks
- 10/100 Ethernet jack • Easy to use software included
- Register a standard Bluetooth headset directly to the base unit to make and receive calls



ACCESSORIES:



KX-THA11 MULTI-TALK V Digital Cordless Handset

- Monochrome LCD



KX-THA12 MULTI-TALK V Digital Cordless and Video Camera Handset

- 2" Color LCD



KX-THA13 MULTI-TALK V Cordless Camera

- Mic and speaker



KX-THA14 MULTI-TALK V USB Adaptor

- For PC connection



KX-THA16 MULTI-TALK V Cordless Camera Station

- Cellular convergence
- Video conference (H324)



KX-THA17 MULTI-TALK V Digital Cordless Video Camera Handset

- Same as KX-THA12 plus:
- A/V output for TV connection



KX-TG2620B/W
2.4GHz Digital Cordless

- Caller I.D.
- Lighted Handset Antenna
- Handset Speakerphone
- Voice Enhancer
- 50 station phone book and dialer
- Black Only



KX-TG3032B
2.4 GHz Digital
Expandable
Cordless

2-Handset Bundle

- Add up to 2 optional handsets for a total of 4
- User selectable voice mail
- Caller ID • Call Waiting Caller ID
- Voice Enhancer Technology
- Light-up ring indicator
- 50-entry phone directory/Caller ID memory
- Handset speakerphone
- Headset jack • Wall-mountable base unit
- NiMH rechargeable battery • Black

Expands up to 4 handsets



KX-TGA300B
2.4 GHz Expansion Handset

- For use with the KX-TG3032B System
- Caller ID • Call waiting Caller ID
- Frequency hopping spread spectrum technology
- Backlit LCD on handset
- Wall mountable • 2.5mm Headset jack
- Speakerphone • Pause/redial/flash • Black



KX-TG6021M
5.8 GHz Digital
Expandable Cordless

- Add up to 3 optional handsets for a total of 4
- Caller ID
- Call Waiting Caller ID
- 50# Phonebook
- Ringer ID • Light-up ID
- 3-Line white backlit LCD on handsets
- 3 Color indicator with ringer and voice mail alert
- Digital speakerphone on handset
- Rechargeable Ni-MH battery
- Voice enhancer • Flash/hold/redial/pause
- Intercom • Handset locator on base
- Headset jack • Wall mountable • Metallic

Expands up to 4 handsets



KX-TG6051M
5.8 GHz Digital
Expandable Cordless

- Add up to 3 optional handsets for a total of 4
- User selectable voice mail with 18-minutes recording • Light-up ID
- Call waiting caller ID • 50# Phonebook
- 3-Line white backlit LCD on handsets
- 3 Color indicator with ringer and voicemail alert
- Handset speakerphone • Talking Caller I.D.
- Rechargeable Ni-MH battery
- Voice enhancer • Flash/hold/redial/pause
- Intercom • Handset locator on base
- Headset jack • Wall mountable • Metallic

Expands up to 4 handsets



KX-TG6022B
5.8 GHz Digital
2-Handset Bundle

- Add up to 2 optional handsets for a total of 4
- Caller ID
- Call waiting Caller ID
- 50# Phonebook • Ringer ID • Light-up ID
- 3-Line white backlit LCD on handsets
- 3 Color indicator with ringer and voice mail alert
- Digital speakerphone on handset
- Rechargeable Ni-MH battery • Voice enhancer
- Flash/hold/redial/pause • Intercom
- Handset locator on base • 2.5mm Headset jack
- Wall mountable • Black

Expands up to 4 handsets

KX-TGA600M Expansion Handset

KX-TGA600M Expansion Handset

KX-TGA600B Expansion Handset



KX-TG6052B
5.8 GHz Digital
2-Handset Bundle

- Add up to 2 optional handsets for a total of 4
- User selectable voice mail with 18-minutes recording
- Caller ID • Call waiting Caller ID
- 50# Phonebook • Ringer ID • Light-up ID
- 3-Line white backlit LCD on handsets
- 3 Color indicator with ringer and voice mail alert
- Digital speakerphone on handset
- Rechargeable Ni-MH battery • Voice enhancer
- Flash/hold/redial/pause • Intercom
- Handset locator on base • 2.5mm Headset jack
- Wall mountable • Black

Expands up to 4 handsets

KX-TGA600B Expansion Handset



KX-TG1032S
DECT 6.0
Technology
2-Handset
Bundle

- Add up to 4 optional handsets for a total of 6
- Interference Free Communication
- Increased Clarity / Enhanced Security
- Caller ID • Call waiting Caller ID
- 1.9 GHz Cordless Phone
- 30% Battery Life Increase Over 5.8Ghz
- Up to 17 Hours Talk Time
- Caller ID / Call Waiting • Handset speakerphone
- 16 Minute user selectable voice mail and MORE!

Expands up to 6 handsets



KX-TGA101S
DECT 6.0 Expansion Handset

- For use with the KX-TG1032S System
- Caller ID / Call Waiting
- Increased Clarity / Enhanced Security
- Wireless Network Friendly
- Interference Free • Silver

CORDLESS TELEPHONES



SL81108

DECT 6.0 Digital Technology

- Call Waiting Caller I.D.
- Handset Speakerphone
- Intercom Between Handsets • Conference
- Blue Lighted Keypad/Display on Handset
- Headset Compatible (2.5 mm jack)
- On-Hook Dialing • Table/Wall Mountable

Expands up to 12 handsets



SL82218

DECT 6.0 Digital Technology 2-Handset Bundle with User Selectable Voice Mail

- Call Waiting Caller I.D. • Handset Speakerphone
- User selectable Voice Mail with 14-min recording
- Intercom Between Handsets • Conference
- Blue Lighted Keypad/Display on Handset
- Headset Compatible (2.5 mm jack)
- On-Hook Dialing • Table/Wall Mountable

Expands up to 12 handsets



SL80108

DECT 6.0 Digital Technology Extra Handset

- Expansion handset for Models 81108 and 82218 shown at left



EL42108

Analog 5.8 GHz with User Selectable Voice Mail

- Call Waiting Caller I.D.
- User selectable Voice Mail with 14-min recording
- Lighted Keypad/Display on Handset
- Handset/Ringer Volume Control
- 9 Number Speed Dial • On-Hook Dialing • Mute
- Table/Wall Mountable



TL72208

Digital 5.8 GHz 2-Handset Bundle with User Selectable Voice Mail

- Call Waiting Caller I.D. • Handset Speakerphones
- User selectable Voice Mail with 14-min recording
- Intercom Between Handsets • Conference
- Blue Lighted Keypad/Display on Handsets
- Headset Compatible (2.5 mm jack) • Mute
- Table/Wall Mountable



TL71308

Digital 5.8 GHz 3-Handset Bundle

- Call Waiting Caller I.D. • Handset Speakerphones
- Intercom Between Handsets • Conference
- Blue Lighted Keypad/Display on Handsets
- Headset Compatible (2.5 mm jack) • Mute
- Handset/Ringer Volume Control
- On-Hook Dialing • Mute
- Table/Wall Mountable



TL74108

Digital 5.8 GHz Corded/Cordless System with User Selectable Voice Mail

- Call Waiting Caller I.D. • Handset Speakerphone
- User selectable Voice Mail with 14-min recording
- ClearSpeak™ Dial-in-Base Speakerphone
- Intercom Between Handset/Base • Conference
- Lighted Keypad/Display on Handset
- Headset Compatible (2.5 mm jack)
- Table/Wall Mountable



TL76108

2-Line Digital 5.8 GHz Corded/Cordless System with User Selectable Voice Mail

- Call Waiting Caller I.D. • Handset Speakerphone
- User selectable Voice Mail with 15-min recording
- Dial-in-Base Speakerphone
- Intercom Between Handset/Base • Conference
- Lighted Keypad/Display on Handset
- Headset Compatible (2.5 mm) • Table/Wall Mount

Expands up to 8 handsets

TL76008 Expansion Handset For Above



EP5632

Digital 5.8 GHz Corded/Cordless System

- Pair up to 8 BLUETOOTH Cell Phones and/or Headsets with the EP5632
- User selectable Voice Mail with 15-min recording
- Dial-in-Base Speakerphone
- Intercom Between Handset/Base • Conference
- Full color display and animations in handset
- Headset Compatible (2.5 mm) • Table/Wall Mount

Expands up to 12 handsets

EP562 Expansion Handset For Above



CORDLESS TELEPHONES

27923GE2

2.4GHz Cordless

- Handset Volume Control
- Ringer Control
- 10 Number Memory
- One-Touch Redial
- Selectable Ring Tones
- Flash Function
- Easy Wall Mount Capability
- Tone/Pulse Switchable Dialing
- Page/Find • WiFi Friendly
- Available in black only



25932EE1

5.8GHz Cordless

- Call-Waiting Caller ID with 40 Name and Number Memory
- Handset Speakerphone
- 10 Number Memory
- VIP Ring Tones
- Visual Ring Indicator
- Amber Backlit LCD
- Headset jack
- Belt clip
- Available in black only



CELLULAR BLUETOOTH GATEWAY



The XLINK™ connects your Bluetooth enabled cellular phone with your standard desktop phone, allowing you to use your regular home or officetelephone as a cellular multi-line phone system. All you need is a Bluetooth enabled cell phone, and the XLink will take care of the rest!

- Make and receive cell phone calls using XLink with normal wireline cordless or corded telephones
- Call Waiting between calls using or more cellular phones
- Displays Caller ID number from your cellular phone on your home phone's LCD
- Simultaneously connect up to 3 cellular phones to XLink
- Connect directly to any number of standard telephones using XLink's built-in RJ11 jack
- Voice Dialing as provided on your cellular phone • Speed Dialing, Voice Mail access
- Dial and send numbers manually (press # to send dialed number) or automatically
- Bellcore Standard Line Ringing Voltage ensures home phone ringer performance
- User configurable and programmable for cellular phone features e.g. voice mail number
- Built-in USB port to link with your PC for firmware upgrades



ITC-BT

Use without landline telephone service

ITC-BTTN

Use with or without landline telephone service

DECT 6.0 CORDLESS PHONES



What Is DECT?

DECT 6.0 technology is a newly available frequency band that provides improved range without needing to boost the power. The sound quality on DECT is superior to existing 2.4GHz and 5.8GHz models and enables the user to talk anywhere in their home or office without interfering with a wireless network. This proven and reliable technology has been in use for years in Europe and is proven to provide brilliant voice quality and is highly resistant to wiretapping with less interference than 2.4GHz and 5.8GHz phone systems.



DECT 6.0 Cordless Phone

- Superior audio quality
- Interference free communications – WiFi, Bluetooth and microwave friendly
- Razor thin – only 1.7mm
- 1.5-inch hi-res 65K color LCD
- Caller I.D.
- Voice Mail Waiting indication
- Polyphonic ringers
- Built-in alarm clock

Expandable to 5 handsets

SBC-6020

One Handset with Charger/Base

SBC-6028-2HC

Two Handset Bundle with Charger/Base plus Charger

SBC-60HC

Additional Handset with Charger

4-LINE "PRO" LONG RANGE CORDLESS!

DuraFon PRO 4-Line System

- **12 floors in building penetration** • **250,000 sq. ft. in a warehouse or retail store**
- **3,000 acres on a farm or ranch** • **Multiple Handsets (up to 90)**
- Multiple lines (4-ports / lines per base unit) • Expandable to 8 base units
- Ability to broadcast to handsets via analog port or line as well as from another PRO or DuraWalkie handset directly
- Works behind any analog port of a PBX, phone system or analog phone line
- Durable • Reliable • Easy to use
- 6 hours talk time, 50 hours stand-by time
- **Will only work with DuraWalkie and DuraFon PRO handsets shown below**
- Optional external antenna for indoor use in warehouses and manufacturing plant or outdoor use on farms and car lots



System Includes:

- One (1) DuraFon PRO Base Unit • One (1) DuraFon PRO Handset
- One (1) Li-Ion Battery Pack • One (1) AC Charging Cradle
- One (1) Belt Clip • One (1) Optimal Performance Antenna • One (1) Low Profile Antenna

ADDITIONAL HANDSETS FOR DURAFON "PRO"

DuraFon PRO

Extra Handset for DuraFon PRO

Will only work with DuraFon PRO shown above

Includes:

- One (1) DuraFon PRO Handset
- One (1) Li-Ion Battery Pack
- One (1) AC Charging Cradle
- One (1) Belt Clip
- One (1) Optimal Performance Antenna
- One (1) Low Profile Antenna



DuraWalkie

Walkie-Talkie Handset for DuraFon PRO

Will only work with DuraFon PRO shown above

Includes:

- One (1) DuraWalkie Handset
- One (1) Li-Ion Battery Pack
- One (1) AC Charging Cradle
- One (1) Belt Clip
- One (1) Optimal Performance Antenna
- One (1) Low Profile Antenna



NOTES

1-LINE LONG RANGE CORDLESS!

DuraFon 1X Longest Range Cordless Phone and 2-Way Radio System

Works Behind PBX/Key Systems!

- **12 floors in building penetration** • **250,000 sq. ft. in a warehouse or retail store**
- **3,000 acres on a farm or ranch** • Digital 2-way radio (totally independent of the base)
- Loud broadcast/page feature (1-1, 1-group or 1-all) independent of base
- Multi-handset capable – **9 handsets per base, maximum 36 in workgroup**
- Call hold
- Call transfer
- Vibration mode
- Call Waiting Caller I.D.
- 1-touch, 30-number phone directory access
- 6-hours talk time, 50 hours of stand-by time
- Programmable PBX Function Soft Key



DURAFON 1X

1 Handset, 1 Base, 1 Li-Ion Battery, 1 Charging Cradle

DURAFON 1X-HC

1 Handset, 1 Li-Ion Battery, 1 Charging Cradle

This handset will only work with the DuraFon 1X

DURAFON 1X-BU

1 Base Unit

4-LINE LONG RANGE CORDLESS!

DuraFon 4X Longest Range 4-Line Cordless Phone and 2-Way Radio System

Works Behind PBX/Key Systems!

- **12 floors in building penetration**
- **250,000 sq. ft. in a warehouse or retail store**
- **3,000 acres on a farm or ranch**
- 4 telephone lines supported from one base
- Backward compatible with previous 4-line Model EP-490
- Digital 2-way radio (totally independent of the base)
- Loud broadcast/page feature (1-1, 1-group or 1-all) independent of base
- Multiple handsets – up to 36 • Call hold • Call transfer
- Vibration mode • Call Waiting Caller I.D.
- 1-touch, 30-number phone directory access
- New extra-loud ringer • 6-hours talk time, 50 hours of stand-by time
- Programmable PBX Function Soft Key
- Tough and durable handset & antenna • Handset is water resistant
- Built-in headset jack • Number keys are bigger and numbers are wear resistant



DuraFon 4X-HC

• Extra Handset– includes handset, battery, charging cradle, belt clip and 1 long and 1 short handset antenna

This handset will only work with the DuraFon 4X

DuraFon 4X-PIA

• 4 Handset Promo Kit – includes 4 handsets, batteries, charging cradles, belt clips and 4 long and 4 short handset antennas plus 4 DuraPouches!

DuraFon 4X-PIB

• Same as DuraFon 4X-PIA above plus includes 1 external antenna and 1 lightning protection kit

ACCESSORIES

DURAFON-HSA1

Long Handset Antenna

DURAFON-HSA2

Short Handset Antenna

SN-ULTRA-AK10L

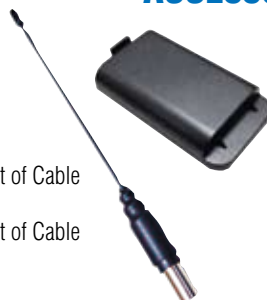
Longer Range Hi-Gain Outdoor Antenna with 30-Feet of Cable

SN-ULTRA-AK20L

Longer Range Hi-Gain Outdoor Antenna with 60-Feet of Cable

SN-ULTRA-AS

Antenna Splitter for AK10L/AK20L Antennas



SN-ULTRA-LPK

Lightning Protector Kit

DURAFON-BA

Li-Ion Battery

DURAPOUCH-EX

DuraPouch Carry Case

DURAFON-BC

Belt Clip

DURAFON-CH

Spare Desktop Handset Charger



BATTERY BACKUP

APC
Legendary Reliability™

BEST VALUE BATTERY BACKUP & PROTECTION FOR HOME/OFFICE APPLICATIONS



BE350R

- 4 battery + 4 surge only outlets
- 350VA (200W)
- Ship weight – 10.6 lbs.
- 6-foot cord • USB connection
- **Wall mountable**
- \$75,000 Lifetime Equipment Protection Policy



BE550R

- 4 battery + 4 surge only outlets
- 550VA (330W)
- Ship weight – 14.3 lbs.
- 6-foot cord • USB connection
- **Wall mountable**
- \$75,000 Lifetime Equipment Protection Policy



BE750G

- 5 battery + 5 surge only outlets
- 750VA (450W) • Master & controlled outlets
- Ship weight – 12.5 lbs.
- 6-foot cord • USB connection
- **Wall mountable**
- \$75,000 Lifetime Equipment Protection Policy

BEST VALUE BATTERY BACKUP & PROTECTION FOR BUSINESS APPLICATIONS



BK350

- 3 battery + 3 surge outlets
- USB and serial connectivity
- 350VA (220W) • Ship weight – 14 lbs.
- 2-Year Warranty
- \$100,000 Lifetime Equipment Protection Policy



BR500

- 3 battery + 3 surge outlet
- 500VA (300W) • Ship weight – 15.9 lbs.
- Network manageable, auto shutdown software
- 2-Year Warranty
- \$150,000 Lifetime Equipment Protection Policy



BR900

- 900VA/540 Watts
- Corrects brownouts and overvoltages from 78V to 152V
- 4 UPS and 3 surge only outlets
- Single line modem/fax/DSL & Ethernet protection • USB port • 2-Year Warranty
- Ship weight – 22.5 lbs. • \$150,000 Lifetime Equipment Protection Policy

HIGH PERFORMANCE BATTERY BACKUP & PROTECTION FOR BUSINESS APPLICATIONS



BR1300LCD

- 1300 VA (780W)
- Boost automatic voltage regulation
- LCD display
- Predictive failure notification
- Ship weight – 30.7 lbs.
- \$150,000 Lifetime Equipment Protection Policy



BR1500LCD

- 1500 VA (865W)
- Boost automatic voltage regulation
- LCD display
- Predictive failure notification
- Ship weight – 34.22 lbs.
- \$150,000 Lifetime Equipment Protection Policy



BR1500 (Expandable)

- 1500VA/865 Watts
- Network manageable auto shutdown software
- 6 UPS + 2 surge outlets
- SLT/modem/fax/DSL or Ethernet protection
- Ship weight – 26 lbs.
- \$150,000 Lifetime Equipment Protection Policy
- **BR24BP Battery Pack**
- Extended battery for BR1500

ENGINEERED POWER SOLUTIONS FOR THE ULTIMATE AUDIO-VIDEO EXPERIENCE



H10BLK

- 1KVA Power Conditioner • 4949 joules surge energy rating
- Automatic voltage regulation • Coax protection • Power line splitter
- 12 outlets • 10-foot cord
- Ship weight – 21.8 lbs.
- \$500,000 Lifetime Equipment Protection Policy



J10BLK

- 1KVA/660W Power Conditioner with battery backup
- 3200 joules surge energy rating • Simulated sinewave waveform
- 12 outlets • 10-foot cord
- Ship weight – 54.8 lbs.
- \$750,000 Lifetime Equipment Protection Policy

POWER PROTECTION FOR ENTRY-LEVEL SERVERS & VOICE/DATA NETWORKS



SC620

- 620VA/390W • 4 outlets • 1 RJ45
- Interface Port DB-9 RS-232
- Ship weight – 29 lbs.



SC420

- 420VA/260W • 4 outlets • 1 RJ45
- Interface Port DB-9 RS-232 • Ship weight – 24 lbs.



SC1500

- 1440VA/865W
- 6 outlets
- USB Interface
- 3.5" High (2U) 19" Wide – rack mountable
- Shipping weight – 54 lbs.



SC450RM1U

- 450VA/280W
- 4 outlets
- DB9/RS232 Serial Interface
- 1.75" High (1U) 19" Wide – rack mountable
- Shipping weight – 27 lbs.

PERFORMANCE POWER PROTECTION FOR SERVERS & VOICE/DATA NETWORKS



SUA750

- 750VA/500W
- 6 outlets
- USB port
- Interface Port DB-9 RS-232
- Smart Slot
- Shipping weight – 32 lbs.



SUA750XL

- 750VA/600W • **Extended runtime**
- 8 outlets • 1 RJ45
- Interface Port RS-232 and USB • Smart Slot
- Shipping weight – 58 lbs.



SUA1000

- 1000VA/670W • 8 outlets
- Interface Port RS-232 and USB • Smart Slot
- Shipping weight – 46 lbs.



SUA1500

- As above with • 1440VA/980W • Ship weight – 58 lbs.

SUA24XLBP Extra Battery Pack

RACKMOUNTED SOLUTIONS



SUA1000RM2U

- 1000VA/670W
- Protects against electrical line noise, frequency variations, switching transients and harmonic distortion
- USB and Serial Interface
- 3.5" High (2U) 19" Wide – rack mountable
- Shipping weight – 69 lbs.



SUA1500RM2U

- 1440VA/980W
- Protects against electrical line noise, frequency variations, switching transients and harmonic distortion
- USB and Serial Interface
- 3.5" High (2U) 19" Wide – rack mountable
- Shipping weight – 70 lbs.



SUA2200RM2U

- 2200VA/1980W
- Protects against electrical line noise, frequency variations, switching transients and harmonic distortion • USB & Serial Interface
- 3.5" High (2U) 19" Wide – rack mountable
- Shipping weight – 125 lbs.

SUA2200

- As above, but not rack mountable

PERFORMANCE POWER PROTECTION WITH SCALABLE RUNTIME FOR SERVERS & VOICE/DATA NETWORKS

SUA1000XL

- 1000VA/800W
- **Extended runtime**
- 8 outlets
- Interface Port RS-232 and USB
- Smart Slot
- Shipping weight – 65 lbs.



SUA24XLBP

Extra Battery Pack

SUM1500RMXL2U

- Modular design
- 1500VA/1425W
- Automatic internal bypass
- DB9/RS232/RJ45/USB
- Extended runtime available
- Rack/tower convertible
- 8-outlets (15 amp)
- 10-foot cord
- 3.5" High (2U) 19" Wide – rack mountable
- Shipping weight – 125 lbs.



SUM48XLBP2U Extra Battery Pack

SUM3000RMXL2U

- Modular design
- 3KVA/2850W • 10-foot cord
- Automatic internal bypass
- DB9/RS232/RJ45/USB
- Extended runtime available
- Rack/tower convertible
- 8 (16A) & 2 (20A) outlets
- L5-30P Plug input
- 3.5" High (2U) 19" Wide – rack mountable
- Shipping weight – 125 lbs.



SUM48XLBP2U Extra Battery Pack

ENTRY LEVEL STAND-BY UPS



INTERNET350U

- 350VA/180 Watts
- USB port • RJ-11 protection
- 6 outlets – 3 surge and 3 UPS
- \$100,000 Ultimate Lifetime Equipment Insurance
- 2-year warranty



INTERNET600U

- 600VA/300 Watts • Right angle plug
- USB port • RJ-11 protection
- 8 outlets – 4 surge and 4 UPS
- \$100,000 Ultimate Lifetime Equipment Insurance
- 2-year warranty



INTERNET900U

- 900VA/480 Watts • Right angle plug
- USB port • RJ-11 protection
- 12 outlets – 6 surge and 6 UPS
- \$100,000 Ultimate Lifetime Equipment Insurance
- 2-year warranty

INTERNET750U 750VA/450 Watts

ENTRY LEVEL LINE INTERACTIVE UPS



SMART550USB

- 550VA/300 Watts
- Corrects brownouts as low as 83V
- USB port
- 3 surge only & 3 UPS outlets
- RJ-11 protection
- \$200,000 Ultimate Lifetime Equipment Insurance

SMART750USB

As above but 750VA/450 Watts



OMNIVS800

- 800VA/475 Watts
- Corrects brownouts as low as 83V
- USB port
- 1 surge only & 6 UPS outlets
- RJ-11 protection
- \$200,000 Ultimate Lifetime Equipment Insurance

OMNIVS1000

As above but 1000VA/500 Watts



OMNIVS1500XL

Extended Runtime Capable

- 1500VA/940 Watts
- Corrects brownouts/overvolts from 75V to 147V
- USB port
- 2 surge only & 6 UPS outlets
- RJ-11/DSL/Ethernet protection
- \$200,000 Ultimate Lifetime Equipment Insurance

BP24V14 Expansion battery

DIGITAL DISPLAY LINE INTERACTIVE UPS

OMNI650LCD

- 650VA/350 Watts
- **LCD display** indicates input voltage, battery capacity and more!
- USB port (HID compliant)
- Corrects brownouts as low as 89V
- 4 UPS & 4 surge only outlets
- Tower or shelf mount
- \$200,000 Ultimate Lifetime Equipment Insurance



OMNI900LCD

- 900VA/475 Watts
- **LCD display** indicates input voltage, battery capacity and more!
- USB port (HID compliant)
- Corrects brownouts as low as 89V
- 4 UPS & 4 surge only outlets
- Tower or shelf mount
- \$200,000 Ultimate Lifetime Equipment Insurance



SMART1000LCD

- 1000VA/500 Watts
- **LCD display** indicates input voltage, battery capacity and more!
- USB port (HID compliant)
- Corrects brownouts as low as 89V
- 4 UPS & 4 surge only outlets
- Tower or shelf mount
- \$250,000 Ultimate Lifetime Equipment Insurance



DIGITAL DISPLAY TOWER/RACKMOUNT UPS



SMART1200LCD

- 1200VA/700 Watts • DB9 Serial and USB port
- **LCD display** indicates input voltage, battery capacity and more!
- DB9 Serial and USB port
- Corrects brownouts/overvoltages from 75V to 147V
- Tower or rack mount (includes brackets)
- \$250,000 Ultimate Lifetime Equipment Insurance



SMART1500LCD

- 1500VA/900 Watts • DB9 Serial and USB port
- **LCD display** indicates input voltage, battery capacity and more!
- DB9 Serial and USB port
- Corrects brownouts/overvoltages from 75V to 147V
- Tower or rack mount (includes brackets)
- \$250,000 Ultimate Lifetime Equipment Insurance

1U RACKMOUNT PROFESSIONAL LINE INTERACTIVE UPS



SMART500RT1U

- 500VA line interactive 1U rack/tower UPS
- 6 outlets with 1 switchable loadbank
- Simultaneous communications via SNMPWEBCARD slot, USB and DB9 ports
- Included PowerAlert UPS monitoring software
- Built-in voltage regulation corrects brownouts to 90V

SNMPWEBCARD



SMART750RM1U

- 750VA/450 Watts
- Simultaneous communications via SNMPWEBCARD slot, USB and DB9 ports
- Sine wave line interactive output
- 1U (1.75") high
- 6 outlets

SNMPWEBCARD



SMART1000RM1U

- 1000VA line interactive 1U rack/tower UPS
- 6 outlets in 2 switchable loadbanks
- Included PowerAlert UPS monitoring software
- Simultaneous communications via SNMPWEBCARD slot, USB and DB9 ports
- Built-in voltage regulation corrects brownouts to 90V

SNMPWEBCARD

2U RACKMOUNT PROFESSIONAL LINE INTERACTIVE UPS



SMART1000RM2U

- 1000VA/700 Watts
- Simultaneous communications via SNMPWEBCARD slot, USB and DB9 ports
- Sine wave line interactive output
- 2U (3.5") high
- 6 outlets

SNMPWEBCARD



SMART1500RM2U

- 1500VA/1000 Watts
- Simultaneous communications via SNMPWEBCARD slot, USB and DB9 ports
- Sine wave line interactive output
- 2U (3.5") high
- 8 outlets

SNMPWEBCARD



SMART3000RM2U

- 3000VA/2250 Watts • 2U (3.5") high
- 2 USB, 2 Serial ports, SNMP/Web card slot and EPO interface
- Sine wave line interactive output 78V-147V
- L5-30P (120V 30A / includes 5-20P plug 120V 20A) • 4 (15A), 4 (20A) & 1 (30A) outlets

BP48V24-2U Expansion battery

SNMPWEBCARD

PROFESSIONAL EXTENDED RUNTIME RACKMOUNT (2U) UPS



SMART750RMXL2U

- 750VA/450 Watts • 6 outlets
- Maintains sine wave 120V nominal output on input of 83V-147V • 2U (3.5") high
- Network communications w/USB, serial, SNMP/web card slot and EPO interface

BP24V28-2U Expansion battery

BP24V70-3U Expansion battery

SNMPWEBCARD



SMART1500RMXL2U

- 1500VA/1000 Watts • 8 outlets
- Maintains sine wave 120V nominal output on input of 79V-147V • 2U (3.5") high
- Network communications w/USB, serial, SNMP/web card slot and EPO interface

BP36V15-2U Expansion battery

BP36V42-3U Expansion battery

SNMPWEBCARD



SMART2200RMXL2U

- 2200VA/1600 Watts • 4 (15A), 4 (20A) outlets
- Maintains sine wave 100/110/120V nominal output on input of 83V-145V • 2U (3.5") high
- Network communications w/HID enabled USB, serial, SNMP/web card slot and EPO interface

BP48V24-2U Expansion battery

BP48V60RT3U Expansion battery

SNMPWEBCARD

PROFESSIONAL EXTENDED RUNTIME TOWER UPS

SMART750XL

- 750VA/450 Watts
- Maintains sine wave 120V nominal output on input of 91V-145V
- Network communications w/USB, serial and SNMP web card slot
- 8 outlets

BP36V27 Expansion battery

SNMPWEBCARD



SMART1500XL

- 1500VA/980 Watts
- Maintains sine wave 120V nominal output on input of 75V-147V
- Network communications w/USB, serial and SNMP web card slot
- 6 outlets

BP36V27 Expansion battery

SNMPWEBCARD



SMART2200VSXL

- 2200VA/160 Watts
- Maintains sine wave 120V nominal output on input of 79V-147V
- Network communications w/2-USB, 2-serial, SNMP web card slot or EPO interface
- 20A input S-20P plug • 10 outlets

BP48V18 Expansion battery

SNMPWEBCARD





EnSpire™ Series UPS Systems

- **Wall Mountable**
- 400 and 600 VA sizes
- Stand-by UPS technology
- Three UPS outlets and three surge-only outlets
- Two transformer-friendly spaced outlets perfect for AC adapters
- Fax/modem/network protection
- Built-in USB communications port
- Includes Minuteman® SentryPlus™ software for power monitoring and control
- Three-year warranty for electronics (Two-years on internal batteries)

EN400 400 VA

EN600 600 VA



SIZING? GO TO:

www.sizeups.com/9595.html

Entrust™ Series UPS Systems

- 500, 700, 1000 and 1500 VA sizes
- Line interactive UPS technology with Automatic Voltage Regulator (AVR)
- Four UPS outlets and four surge-only outlets
- Two transformer-friendly spaced outlets perfect for AC adapters
- Fax/modem/network protection
- Built-in USB communications port
- Includes Minuteman® SentryPlus™ software for power monitoring and control
- Three-year warranty for electronics (Two-years on internal batteries)

ETR500 500 VA

ETR700 700 VA

ETR1000 1000 VA

ETR1500 1500 VA



SIZING? GO TO:

www.sizeups.com/9595.html

PRO-E™ Series

- 500, 700, 1100 and 1500 VA sizes
- For PCs, phone systems, networked servers
- Intelligent microprocessor
- Line interactive topology
- Double boost single buck
- Independent of battery bypass
- Fax/modem/data protection
- SNMP ready
- Automatic voltage regulation
- Hot swappable batteries
- Includes Minuteman® SentryPlus™ software for power monitoring and control
- Three-year parts and labor warranty

PRO500E 500 VA

PRO700E 700 VA

PRO1100E 1100 VA

PRO1500E 1500 VA



SIZING? GO TO:

www.sizeups.com/9595.html



SmartSine™ Series

True sinewave UPS; rich features & compact design

- For networks, PCs, phone & security systems
- True sinewave output
- Line interactive topology
- 700, 1000, 1400 and 2000VA models
- 8 receptacles on each unit
- Independent battery bypass
- Expansion slot for accessory options including multi-function web/SNMP card and environmental device monitoring kit
- Free Minuteman Sentry II™ Power Management & Diagnostic Software
- 3-Year Warranty
- \$40,000 Minuteman Platinum Protection Plan

S700 700 VA

S1000 1000 VA

S1400 1400 VA

S2000 2000 VA

SNMP-32L

- 10/100 Network Interface Card for SmartSine Models

SIZING? GO TO:

www.sizeups.com/9595.html

BATTERY BACKUP



Enterprise™ 1U Rackmount Series

- Designed specifically for the protection of network components in rackmount environments:
 - Switches
 - Hubs/Routers
 - Servers
 - Telephone Systems
- Built-In AVR (Automatic Voltage Regulator) functions with buck and boost features to stabilize output voltage
- Independent Battery Bypass™ allows the UPS to provide voltage regulation with spike and surge protection
- Integrated USB and RS232 communication with simultaneous function for software control (USB and RS232 Cables are Included)
- Two independently controllable output segments for removing non-critical loads during extended blackouts
- (12) Front panel LEDs for diagnostics
- Includes MINUTEMAN Sentry Business™ power management and diagnostic software • 3-Year Warranty

E700RM1U 700 VA

E1000RM1U 1000 VA

E1500RM1U 1500 VA

SIZING? GO TO:

www.sizeups.com/9595.html

EnterprisePlus™ Rackmount 2U Series

- 750, 1000, 1500, 2000 and 3000 VA sizes
- Line interactive UPS technology with Automatic Voltage Regulator (AVR)
- True sine wave output
- 19-inch rack and tower mounting capability included
- 23-inch rack and wall mounting optional
- Units require only 2U rack height in rack environments
- Unlimited runtime capability via external battery packs
- Built-in USB and RS 232 communications ports
- Includes Minuteman® SentryPlus™ software
- SNMP compatible via optional card
- Three-year parts and labor warranty

E750RM2U 750 VA

E1000RM2U 1000 VA

E1500RM2U 1500 VA

E2000RM2U 2000 VA

E3000RM2U 3000 VA

EBP36XL Extra Battery

EBP72XL Extra Battery

SNMP-NET NIC Card

Optional Wall Mount Kit



Today's global business demands the uninterrupted flow of data, whether the path is across the building or halfway around the world. When electrical utility power is disrupted, the business costs can be astronomical — research by Frost & Sullivan estimates that power interruptions cost American businesses as much as \$50 billion each year.

Enterprise-wide networks encompass more than just servers and workstations. Bridges, data switches, hubs, routers, and telephone systems now comprise an "enterprise" system, and these sensitive devices require clean, continuous AC power to ensure data integrity, hardware stability, and maximum equipment life. To ensure optimum performance with all types of electronic equipment, every EnterprisePlus Series UPS produces a continuous, true sinewave output that these sensitive, mission-critical devices demand.

SIZING? GO TO:

www.sizeups.com/9595.html

HIGH-END TRUE ONLINE RACK/TOWER UPS

Endeavor™ Series UPS Systems 1 – 3KVA

- 1000, 1500, 2000 and 3000 VA sizes
- True on-line double conversion UPS technology
- True sine wave output
- 19-inch rack and tower mounting capability included
- 23-inch rack and wall mounting optional
- Units require only 2U rack height in rack environments
- Unlimited runtime capability via external battery packs
- Load-shedding capability
- Fax/modem/network protection
- Built-in USB and RS 232 communications ports
- Includes Minuteman® SentryPlus™ software for power monitoring and control
- SNMP compatible via optional card
- Three-year parts and labor warranty



SIZING? GO TO:
www.sizeups.com/9595.html

ED1000RM2U	1000 VA
ED1500RM2U	1500 VA
ED2000RM2U	2500 VA
ED3000RM2U	3000 VA

EDBP24XL	Extra Battery
EDBP48XL	Extra Battery
EDBP72XL	Extra Battery
SNMP-NET	NIC Card

HIGH-END TRUE ONLINE RACK UPS

The Endeavor 6KVA Series Are SPECIAL ORDER DROP SHIP ONLY!

Endeavor™ Series UPS Systems 6KVA

- True on-line architecture supplies critical device with transient-free pure sine wave AC power
- 6000 VA/4200 watts • LCD/LED front panel displays status of UPS
- Switches to bypass automatically in case of overloading at 150%
- Maintenance free sealed-type battery minimizes after-sales service
- Intelligent, temperature-controlled • Cold start function
- Simple parallel installations (no extra PCB required)
- Full digital signal processor • Easy-to-set user personalization
- Intelligent self diagnosis • Smart fan control • Communicate via SNMP/Web card
- Emergency Power Off (EPO) function • True double conversion on-line technology
- High input Power Factor and low voltage THD • Energy efficient UPS
- 2X customer options slots • Remotely test major operating functions of UPS
- i-Batt (automatically manages end of discharge voltage according to load capacity)

*** At least one EDBP6000RM Battery Pack must be purchased with each ED6200RM**



SIZING? GO TO:
www.sizeups.com/9595.html

ED6200RM*	6000 VA/4200W
ED6000RMXFRM	120V Stepdown Transformer Module
EDBP6000RM	Battery Pack (Min. 1 Required)

ED6-120RB	Rec. Pt. Box (L6-30/L5-30/L5-20/[2]5-15/20)
ED6-208RB	Rec. Pt. Box (L6-30/L6-20/[4]6-15/20)



PS/2 Slim Desktop KVM

- Single integrated connector for keyboard, video and mouse for up to 4 computers • Eliminates desktop clutter
- Includes required number of 3-in-1 cables

MMAKVS02SK	2-Port
MMAKVS04SK	4-Port



PS/2 USB Rackmount KVM

- Large networks of servers can be controlled through one KVM in a cascaded configuration of 16-port KVMs • On-screen display • No delay in switching

MMAUSB0480SD	4-Port
MMAUSB0880SD	8-Port
MMAUSB1680SD	16-Port



MMS130C

- Three grounded outlets
- \$50,000 connected equipment warranty protection
- LED indicators • 1080 Joules
- Coax/DSS protection
- Switch shutdown technology
- High frequency capacitors



MMS362P

- Two units in one pack
- Protects against surges and spikes
- Six grounded outlets each
- Wall mountable
- 241 Joules



MMS370

- Seven fixed grounded outlets
- Child safety covers
- Wall mountable
- \$50,000 connected equipment warranty protection
- 1080 Joules

MMS370T

- As above but 1440 Joules with RJ11



MMS570 Suppressor

- 7 outlets
- **Ruggedized**
- 9-foot cord
- 1440 joule rating
- \$75,000 Equipment Protection Warranty



MMS760RCT

- Six 90° rotating outlets for connecting multiple transformers
- Satellite/cable/coax protection
- Phone/fax/modem protection
- Direct plug in – no cord
- 2160 Joules

MMS7120RCT

- As above but 4320 joules/12 outlets



MMS780R Surge Suppressor

- Rotating outlets
- 7-foot cord
- Wall mountable
- 900 joule rating
- \$100,000 Equipment Protection and Lifetime Warranty



MMS7100RCT

- Five 90° rotating grounded outlets and 5 fixed grounded outlets
- Phone/fax/modem protection
- Cord management design
- Wall mountable • 2880 Joules
- Seven-foot power cord
- \$150,000 connected equipment warranty protection



MMS1015HV Surge Suppressor and Power Distribution Unit

- **Rack mountable**
- 8 Outlets on rear and 2 outlets on front of each unit
- 2000 joule rating
- 15-foot power cord
- Can be mounted either vertically or horizontally in most racks and enclosures

P4 AC Protection

- 4 outlets (2 per side)
- Direct plug-in to wall
- 700 joules
- LED status indicator
- Transformer block spacing
- \$25,000 Equipment Protection Warranty



APC[®] Legendary Reliability™



PER7 AC Protection

- 7 horizontal outlets
- 6-foot cord • 1060 joules
- \$50,000 Equipment Protection Warranty

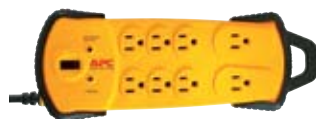
P7T AC Protection

- 7 vertical outlets
- RJ-11 data protection
- 6-foot cord • 1080 joules
- LED status indicator
- Transformer block spacing
- \$25,000 Equipment Protection Warranty



PH8T3 AC Protection

- 8 outlets
- RJ-11 data protection
- 8-foot cord • 2525 joules
- **Resettable circuit breaker**
- Right angle plug
- \$75,000 Equipment Protection Warranty



PDIY8 AC Protection

- 8 outlets
- **Ruggedized**
- 15-foot cord • 820 joules
- LED status indicator
- Hanging hook
- Noise filtering
- Lifetime Warranty



NET7 AC Protection

- 7 horizontal outlets
- 6-foot cord
- 3420 joules
- Right angle plug
- \$100,000 Equipment Protection Warranty



PR11T3V5 AC Protection

- 11 outlets (5 center, 3 each side)
- RJ-11 data, 2 coax protection
- 10-foot cord • 3400 joules
- LED status indicator
- Cord management • Noise filtering
- \$100,000 Equipment Protection



NET9RMBLK AC Protection

- **Rack Mountable**
- 9 outlets (8 rear, 1 front)
- LED status indicator
- Noise filtering
- 15-foot cord • 1700 joules
- 1.75" High Rackmount (1U)
- \$250,000 Equipment Protection

SURGE PROTECTION

ITW

SurgeGate M4 SERIES



M4KSU

AC Line Protection

- AC protection for KSU & peripherals
- 4 transformer spaced AC receptacles
- Circuit breaker • 15 Amps
- 8-foot power cord
- 1650 joules

M4T

AC Line and Tel Protection

- 1 telephone line protected
- 4 transformer spaced AC receptacles
- Circuit breaker • 15 Amps
- 8-foot power cord
- 1650 joules

M4L

AC Line and LAN Protection

- 1 LAN cable protected
- 4 transformer spaced AC receptacles
- Circuit breaker • 15 Amps
- 8-foot power cord
- 1650 joules

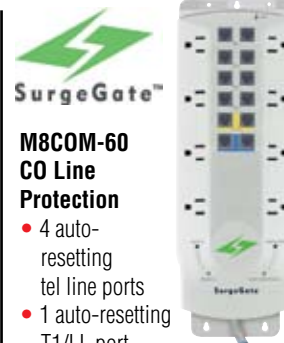
SurgeGate M8 SERIES



M8KSU-60

AC Line Protection

- AC protection for KSU & peripherals
- 8 transformer spaced AC receptacles
- Circuit breaker
- 8-foot power cord
- 1650 joules



M8COM-60

CO Line Protection

- 4 auto-resetting tel line ports
- 1 auto-resetting T1/LL port
- LAN link protection
- 4 switched outlets
- 4 "Always On" outlets
- 1650 joules

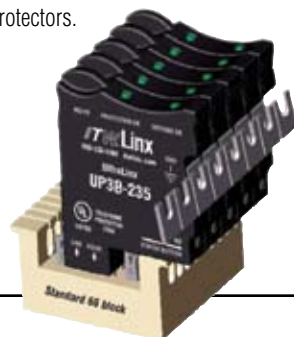
The Modules Shown On The Next Page Work With The SurgeGate™ Series Shown Above

66 Block Protection

UP3B Series 66 Block Protection

- Dual Indicator Lights—Protection OK and Ground OK • Self resetting solid state protection
- Provides the fastest response to transient voltages (1–5 nanoseconds) • Single Pair Protection
- Sneak Current Protection
- Streamlined Installation—

Eliminate redundant cross-connects by adding protection directly at the 66 Block. Press fit protectors to the the block attaching the ground bar MGB-SGL to the protectors.



ITW Linx UP3B-235

For CO Lines or Analog Extensions

ITW Linx UP3B-75

For Digital Extensions To Clamp At 75V

ITW Linx UP3B-39

For Nortel Digital Extensions Only

ITW Linx UP3B-27

For Digital Extensions To Clamp At 27V

ITW Linx UP3B-16

For Digital Extensions To Clamp At 16V

ITW Linx UP3B-7.5

For Digital Extensions To Clamp At 7.5V

ITW Linx MGBSGL-1

Grounding Bar w/Lug For UP3B Series • 1 required per 66 block

AC Protection



ACP-1

Single Outlet AC Surge Protector with Ground Lug

- One Outlet Surge Protector
- Ground lug will offer ground termination if none is available at install location
- Ground wire needed for UP3B Series at left
- UL Primary or Secondary Single Point Ground NOT to exceed 6-pairs.

Rack Mount AC Surge Protection



RacMAX 3400 (RM-3400)

- 12 AC power outlets (4 Front, 8 Rear), 15-amps
- SurgeGate Plus Circuitry (with bypass switch) for auto-resetting over-voltage and under-voltage protection
- Protect or Disconnect Circuitry
- Four front panel, transformer spaced, convenience outlets
- Power switch (with guard) controls all 12 outlets
- 3 front panel indicator lights: Power, Ground OK and Unsafe Voltage
- Front panel circuit breaker • Single-height rack mountable chassis (1U)
- 10-foot power cord • Rear panel ground lug • Lifetime warranty



RacMAX 2600 (GRM-0600)

- Eight protected AC power outlets
- SurgeGate Plus Circuitry protects against prolonged overvoltages and undervoltages by automatically disconnecting the power to your equipment, then reconnecting it when the power has returned to a safe level
- Protect or Disconnect Circuitry
- Front panel circuit breaker
- Power indication light
- Single-height rack mountable chassis (1U)
- 10-foot power cord • Lifetime warranty

ANALOG



ALL MODULES ON THIS PAGE ARE TO BE USED WITH THE SurgeGate M4 & M8 SERIES AT LEFT.

MC025-60 CO Module

- Protects 25 CO lines
- Uses 50-pin RJ21X connectors
- Auto resetting PTC resistors

MC08110 CO Module

Protection of 8 CO lines using two 110 punchdown blocks on the input and two 110 punchdown blocks on the output.

MC04110 CO Module

Protection of 4 CO lines with one 110 connector on the input and one 110 connector or four RJ-11 or RJ-14 jacks on the output

MC04X4-60 CO Module

- Auto resetting for 4 CO lines
- Sneak current protection
- 4 RJ-11/45 jacks in/out

MC04 CO Module

- Protects 4 CO lines
- RJ-11 and RJ-45 compatible
- 2 RJ-11/45 jacks in/out

DIGITAL



MDS25 Digital Station Module

- Protects up to 25 2-wire digital station lines or up to 12 4-wire digital station lines using RJ-21X

MDSCO-60 Central Office Module

- Protects two 4-wire digital or analog CO lines or two 2-wire tip/ring analog lines using RJ-11/45 connectors

MDS2-60 Digital Station Module

- Digital station module
- For 2-4 DS lines
- 70V limiting

PAGING



MRS2 RS-232 Module

- Protects 2 RS-232 lines

MSCL8-60

Paging Module

- Protects 8 wires & provides 4 common grounds

HIGH SPEED VOICE



CAT6-235

- For 110 connectors
- 235V clamping
- CAT 6 rated

CAT5-235

- For 110 connectors
- 235V clamping
- CAT 5e rated

CAT5-235-RJ45

- For RJ-45 connectors
- 235V clamping
- CAT 5e rated

LAN



CAT6-LAN

- For 110 conn.
- 16V clamping
- CAT 6 rated

CAT5-LAN

- For 110 connectors
- 235V clamping
- CAT 5e rated

CAT5-LAN-RJ45

- For RJ-45 connectors
- 235V clamping
- CAT 5e rated

HIGH SPEED DIGITAL



CAT6-75

- For 110 connectors
- 75V clamping
- CAT 6 rated

CAT5-75

- For 110 connectors
- 75V clamping
- CAT 5e rated

CAT5-75-RJ45

- For RJ-45 connectors
- 235V clamping
- CAT 5e rated

MLLT1 CO Module

- Protects 2 4-wire leased or T-1 lines
- Clamping 70V
- Use with KSU base unit

POWER OVER ETHERNET



CAT6-POE

- For 110 connectors
- 16V & 62V clamping
- CAT 6 rated

CAT5-POE

- For 110 connectors
- 16V & 62V clamping
- CAT 5e rated

CAT5-POE-RJ45

- For RJ-45 connectors
- 16V & 62V clamping
- CAT 5e rated



SURGLINX MODULES FOR CCTV AND SECURITY SYSTEMS

MSL-CAT6-LAN

- 110 in/out
- 16V clamping
- CAT 6 rated



MSL-CAT6-POE

- 110 in/out
- 16V clamp data and 68V power



MSL-PTZ-BNC

- BNC in/out
- 7.5V clamp data
- 2-wire screw terminal for power 12VDC/24VAC
- 2 LEDs to indicate performance
- PTZ Camera protector
- Lightning rated

MSL-PTZ-UTP

- Screw terminals in/out
- 7.5V clamp data
- For power 12VDC/24VAC



MSL-PTZ-BAL

- Screw terminals in/BNC out
- 7.5V clamp data
- Integrated balun converter
- 12VDC/24VAC
- PTZ Camera protector



- RJ-45 in/out
- 16V clamping
- CAT 5e cable rated 4-pair



- RJ-45 in/out
- 16V clamp data and 68V power
- CAT 5e rated 4-pr

SURGE PROTECTION



Tripplite TLP604 AC Protection

- 6 outlets
- 4-foot cord
- 720 joules
- \$20,000 Equipment Protection Warranty



TLP606 AC Protection

- As above with 6-foot cord

Tripplite SWIVEL6 AC Protection

- Direct plug-in
- 6 rotatable outlets
- 1200 joules
- LED status indicator
- \$20,000 Equipment Protection Warranty



Tripplite TLP712B AC Protection

- Black color
- 7 outlets
- 1000 joules
- LED status indicator
- \$25,000 Equipment Protection Warranty



TLP712

- As above in white

Tripplite Super 7 AC Protection

- 7 outlets • 7-foot cord
- 2350 joules
- \$75,000 Equipment Protection Warranty
- Lifetime warranty



Super 7TEL

- As above w/RJ-11 & 2470 joules

Super 7TEL15

- RJ-11 w/15-ft cord & 2720 joules

Tripplite TLP808 AC Protection

- 8 outlets
- 8-foot cord
- 1900 joules
- Holds 6 transformers
- \$75,000 Equipment Protection Warranty



TLP808TEL AC Protection

- RJ-11-1 in, 2 out & 2720 joules

Tripplite ISOBLK2-0 AC Protection

- 2 outlets
- Metal housing
- Diagnostic LED lights
- 600 joules
- \$10,000 Equipment Protection Warranty



Tripplite TLM812SA Ruggedized AC Protection

- 8 outlets
- 12-foot cord
- Can hold up to six transformers
- Cord wrap with handle
- Rugged metal case • 1200 joules
- \$50,000 Equipment Protection



TLM825SA

- 25-ft cord & 3600 joules

Tripplite TLP810NET AC Protection

- 8 outlets
- 10-foot cord
- RJ11, RJ45 & coax protection
- 3690 joules
- LED status indicator
- Can hold up to six transformers
- \$250,000 Equipment Protection



Surge Protection Solutions

ITW/Linx SP6DBS AC & COAX Protection

- 6 transformer spaced outlets
- 2 coax in/out
- 1 RJ-11
- 8-foot cord with right angle plug
- 1080 joules
- Cable management
- Lifetime warranty



ITW/Linx SP6 AC Protection

- 8-foot cord with right angle plug
- 1080 joules
- Cable management
- Lifetime warranty



SP6C AC & COAX Protection

- 1 set in/out coax

SP6T AC & CO Protection

- RJ-11 in/out

ITW/Linx MAX-2 (M2) AC Protection

- 2 AC outlets • 1350 joules
- Direct Plug-in
- Diagnostic indicator lights (4)
- EMI/RFI noise filtration
- Integrated cable management



MAX-2 (M2C) COAX

- 1 set in/out coax

MAX-2 (M2T) TEL

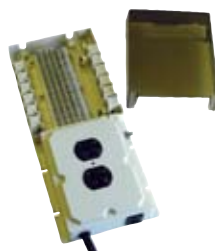
AC & CO Protection

- Protection for one voice or DSL line

EDCO MOD-12 Modular Protection System

The MOD-12 combines AC and Tip/Ring protection into one attractive, compact assembly. This innovative design creates an automatic ground window, thus eliminating the problem of ground potential difference.

- Single-point ground established automatically
- Easy, quick installation
- AC protection
- Expandable beyond integrated 12-pair block
- Use in conjunction with EDCO H-Series Tip/Ring Protectors



MOD-12 Basic Unit

EDCO H-Series for 66-Block Protection

The H-Series modules are UHS (Ultra High Speed) fused solid state, three stage secondary protectors for Key/PABX systems.

- Patent Pending UHS technology
- Fastest industry trip time
- Silicon Foldback Technology
- Auto Reset Fusing (PTC's)
- Surge and sneak current protection
- Snap-on, screwless installation



HCO CO Protection
HAE Analog Extensions
HDE Digital Extensions
MGB Ground Rail for 66 Blocks



SURGE PROTECTION

CCTV SECURITY PROTECTION



DTK-RM16NM 2.8V Clamp

DTK-RM16NMC 6.8V Clamp (PTZ)

- Reduces DVR downtime and failure from voltage surges
- Protects 16 camera feeds in a 2U height rack mount package
- SAD technology provides optimal circuit protection
- 6.8V clamping on the DTK-RM16NMC protects pan-tilt-zoom cameras
- Single point ground

DTK-PVP27B 2.8V Clamp

DTK-PVP27C 6.8V Clamp (PTZ)

- Protects power and video conductors in one package
- BNC in/out and screw terminal for power
- Single point ground improves protection and speeds installation
- Protect standard Coax (PVP27B) and Coaxitron(PVP27C)



AC PROTECTION

DTK-6GTP

6 Outlet Block with Wing Nut (Shown)

DTK-6FF

6 Outlet Block with 1 RJ11 Protector
No Wing Nut

DTK-3GTPX

3 Outlet Block with **Heavy Duty**
Wing Nut



DTK-8FF

AC Protection

- 8 protected outlets
- Configured to handle up to 6 transformers
- RMI/EFI filtering
- RJ-11 phone protection
- 6-foot cord • 1110 joule rating
- 1 RJ11 In – 2 Out



66 BLOCK PROTECTION

“SNAP-LiTE” Data and Voice Protection

- Protects against transient voltage surges
- Sneak current protection • **Self-resettable**

Model Volt

SL-130A	130V	CO Protection
SL-95A	95V	Analog Extension Protection
SL-50A	50V	Digital Extension Protection
SL-30A	30V	Digital Protection
DTK-SIGB-B		Grounding Bar for 66 Blocks



AMP-IT!

- RJ21X 25-Pair Mass Termination
- 150mA **Self Resetting** Fuse
- Male In/Female Out

DTK-MT25PSCPRUV

DTK-MT25PSCPSGR

DTK-MT25PSCPSPK

DTK-MT25PSCPOPX

DTK-MT25PSCPLV

DTK-MT25PSCPX

130V CO Line Protection

95V Analog Extension Protection

75V Digital Extension Protection

50V Digital Extension Protection

30V Digital Extension Protection

14V Digital Extension Protection



MODULAR PROTECTION (RJ45)

RJ SERIES Surge Protection

- Plug and play surge protection • Protects against overvoltage and limits current with **self resetting** sneak fuse
- RJ45 in/out with external grounding screw • Protects all 4 pairs • Pin out for PoE Model – Data: 1-2-3-6; Power: 4-5-7-8

DTK-MRJ45SCP-RUV

130V CO Line Protection

DTK-MRJ45SCP-SGR

95V Analog Extension Protection

DTK-MRJ45SCP-SPK

75V Digital Extension Protection

DTK-MRJ45SCP-OPX

50V Digital Extension Protection

DTK-MRJ45SCP-LV

30V Digital Extension Protection

DTK-MRJPOE

5V Data and 48V Power Protection



SCREW TERMINAL PROTECTION

Low Voltage Line Protection

- 2-pair protection per module
- 5 modules can be ganged to share a common ground

Service Voltage

DTK-2MHL75BWB	75V
DTK-2MHL48BWB	48V
DTK-2MHL36BWB	36V
DTK-2MHL24BWB	24V
DTK-2MHL12BWB	12V
DTK-2MHL5BWB	0-5V



Self Resettable Line Protection

- Low voltage line protection
- Screw terminals, 22 - 14 awg wire
- Response Time: <5 nSec • MCOV: 175VDC
- Max Surge Current: 9000A per pair
- Max Energy Dissipation: 76 Joules per pair
- Typical Let Through Voltage: 130VRMS

DTK-2LVLPSCPRUV 2-Pair 130V CO Line Protection

DTK-4LVLPSCPRUV 4-Pair 130V CO Line Protection

