

DS RealVue XPress Real-Time Digital Video Recorder

INTEGRAL DIGITAL SENTRY® BROADCAST-QUALITY DVMS

Product Features

- 8-, 16-, or 32-Input Digital Video Management System
- MPEG-4 Video Compression
- Up to 720 x 480 (NTSC), 720 x 576 (PAL) Recording Resolution on 32 Channels Simultaneously at 30 Images per Second (ips) (NTSC), 25 ips (PAL)
- Supports Pelco IP Cameras with Sarix™ HD Technology
- Supports the Recording of H.264 Streams from IP Cameras
- Dynamic Camera Settings Based on Status, Including Alarm, Event, and Schedule
- Resolution, Quality, and Recording Rate Configurable per Individual Camera
- Integral Digital Sentry® Video Monitoring Software
- Support for Standard IP Video Devices
- Detailed Reporting of System Settings and Configuration Changes
- Quick Export of Video to DVD Using the Easy Evidence Blue Button
- Easy Playback of Exported Video Without Additional Media Player
- 3-Year Limited Warranty
- Up to 16 Audio Inputs
- Simultaneous Display of Live Video and Replay of Alarm Event
- Variable Video Expiration
- Digital Zoom and On-Screen Pan/Tilt/Zoom (PTZ) Controls

DS RealVue digital video management systems are the security industry's most powerful 32-channel real-time digital video recorders. **DS RealVue XPress** can simultaneously record video from 32 cameras at 30 ips NTSC (25 ips PAL) at full D1 resolution. DS RealVue products are HD-enabled, capable of recording and displaying exceptional high-quality images captured by Pelco IP cameras with Sarix™ HD technology. This tight integration between product and technology makes DS RealVue a robust HD end-to-end solution. These broadcast-quality recorders are equipped with the Integral Digital Sentry® feature set required by high-security applications such as gaming, money counting, and corrections. MPEG-4 compression provides excellent image quality, smaller storage requirements, and reduced network bandwidth. DS RealVue recorders can seamlessly integrate with existing Digital Sentry management systems, combining real-time recorders with systems that record at lower frame rates to meet unique customer demands.



- Email Notification of Alarm Events and System Messages
- Video Authentication
- Third-Party Integration with Over 25 Industry-Leading Devices
- Video Analytics
- Support for DS DataPoint Integration

DS RealVue XPress is available in 8-, 16-, and 32-channel configurations. This hybrid solution supports up to 16 additional IP channels connected to the same unit as the analog cameras. **DS RealVue XPress** also supports 16 channels of audio, which can be searched, played back, and exported in sync with video.

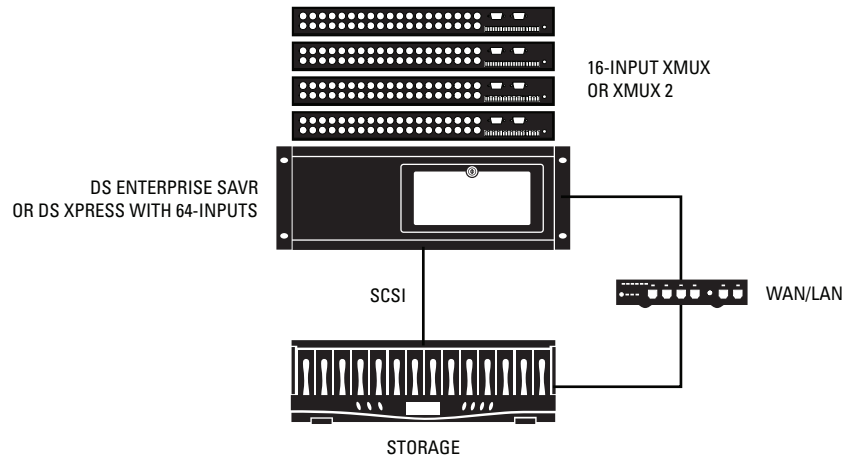
DS RealVue XPress supports the IT-focused Digital Sentry software suite that includes network health and event monitoring, video analytics, and archive utility.



TECHNICAL SPECIFICATIONS

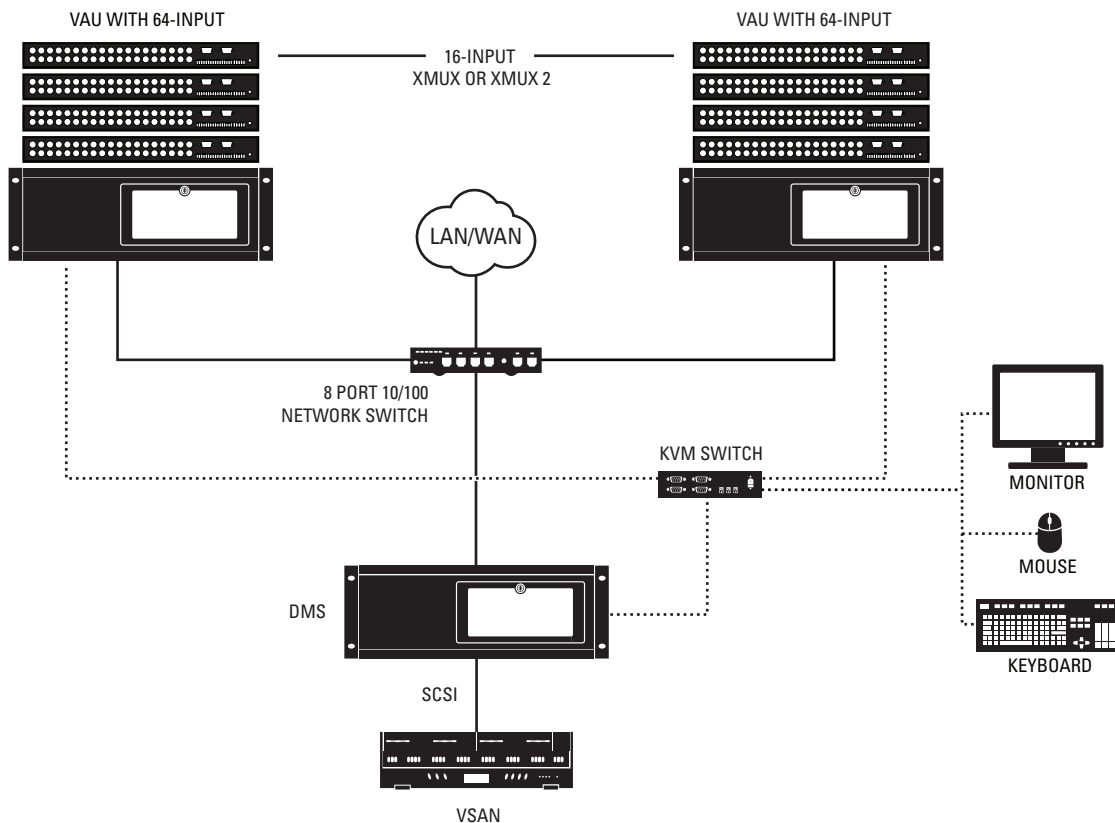
SYSTEM CONFIGURATIONS

The diagrams below illustrate how several DS systems can be configured. These illustrations cover only a small percentage of the possible combinations of DS components.



TYPICAL DS ENTERPRISE SAVR OR DS XPRESS SYSTEM

The server is the centerpiece of a DS system. Separate VAUs can connect to the server through a switch. The server stores large amounts of video on the optional VSAN storage unit. An optional RS-232 trigger input from an access control system and a digital I/O panel can also be connected to the server.



TYPICAL DS ENTERPRISE DISTRIBUTED SYSTEM

IMPORTANT NOTE. PLEASE READ. The network implementations are shown as general representations only and are not intended to show detailed network topologies. Your actual network will differ, requiring changes or perhaps additional network equipment to accommodate the systems as illustrated. Please contact your local Pelco Representative to discuss your specific requirements.

TECHNICAL SPECIFICATIONS

SYSTEM

Operating System	Windows® XP Professional
User Interface	Digital Sentry or DS ControlPoint
Internal Storage	500 GB, 1 TB, or 2 TB

VIDEO/AUDIO

Video Standards	NTSC/PAL	
Video Encoding	MPEG-4	
Video Decoding	iVEX, MPEG-4, MJPEG, wavelet, H.264	
Video Resolutions		
(Analog Cameras)	NTSC	PAL
D1	720 x 480	720 x 576
2CIF	704 x 240	704 x 288
CIF	352 x 240	352 x 288
Analog Camera Inputs	8, 16, or 32	
Video Resolutions (IP Channels)	NTSC	PAL
CIF	352 x 240	352 x 288
4CIF	704 x 480	704 x 576
HD	Up to 5 megapixels (NTSC and PAL)	
IP Camera Capacity	16	
Recording Rate per Channel	30 ips (NTSC), 25 ips (PAL)	
Audio Channels	Up to 16	
Codec	MPEG1 Layer 2	
Bits Per Second	32 to 192 Kbps	
Sampling frequency	32 kHz	

AUXILIARY INTERFACES

PTZ Interface	RS-232, RS-422, RS-485
Network	10/100/1000Base-T
Alarm Inputs	15 dry contact
Relay Output	1 Form C

MECHANICAL

Connectors

BNC	Video inputs and outputs
Terminal Blocks	Input triggers, audio inputs, RS-422/RS-485, output relays
Dual-DB15, RCA	Video inputs (unused)
USB	4 high-speed USB 2.0 ports; connect mouse and keyboard
DB15	VGA port
RJ-45	Dual 10/100/1000 Megabit Ethernet ports
6-Pin Mini-DIN	PS/2 mouse and keyboard
Audio Connectors	Miniature phono plug for line in (unused), line out, and microphone in (unused)
DB25	Printer

Optional I/O Connectors

Audio Levels	
Input	Line-level input
Output	Line-level output
Audio Connectors	Terminal block
Audio Inputs	Up to 16
Trigger Connectors	Terminal block
Trigger Inputs	TTL, dry contact to GND
Outputs	Form C relay, contact closure
RS-422/RS-485	Terminal block

POWER

Input Voltage	100 to 240 VAC \pm 10%, 50/60 Hz
Power Consumption	340 W maximum

PHYSICAL

Dimension	20" D x 19" W x 7" H (4RU) (50.80 x 48.26 x 17.78 cm)
Unit Weight	40 lb (18.14 kg)
Shipping Weight	77 lb (34.93 kg)

ENVIRONMENTAL

Operating Temperature	50° to 95°F (10° to 35°C)
Storage Temperature	–40 to 149°F (–40 to 65°C)
Operating Humidity	20% to 80%, noncondensing
Operating Altitude	–50 to 10,000 ft (–15 to 3,048 m)
Operating Vibration	0.25 G at 3 Hz to 200 Hz at a sweep rate of 0.5 octave/min.

REMOTE PC CLIENT REQUIREMENTS

Processor	
Minimum	Intel® Pentium® 2.4 GHz with Hyper-Threading Technology
Recommended	Intel Core™2 Duo 2.4 GHz
Internal Memory	
Minimum	512 MB
Recommended	2 GB
Operating System	
Minimum	Windows XP Home or Windows Vista®
Recommended	Windows XP Professional SP 2
Video System	
Minimum	128 MB RAM with DirectX® 9.0c
Recommended	Dual-head, 256 MB RAM with DirectX 9.0c

Systems Streaming Between 4 and 32 H.264 Cameras

CPU Speed	Intel Core2 Quad Q9400, 2.66 GHz (4 CPUs)
VGA Card	NVIDIA® GeForce™ 9600 GT (512 MB, minimum)
Memory	4 GB RAM

CERTIFICATIONS

- CE, Class A
- FCC, Class A
- UL Listed

NOTICE: Judgment as to the suitability of the products for users' purposes is solely the users' responsibility. Users should refer to the Operation manuals for cautionary statements regarding user selected options and how they might affect video quality. Users shall determine the suitability of the products for their own intended application, picture rate and picture quality. In the event users intend to use the video for evidentiary purposes in a judicial proceeding or otherwise, users should consult with their attorney regarding any particular requirements for such use.

TECHNICAL SPECIFICATIONS

MODELS

DSR080500	8 video inputs, 240 ips, 500 GB internal storage
DSR081000	8 video inputs, 240 ips, 1000 GB internal storage
DSR082000	8 video inputs, 240 ips, 2000 GB internal storage
DSR160500	16 video inputs, 480 ips, 500 GB internal storage
DSR161000	16 video inputs, 480 ips, 1000 GB internal storage
DSR162000	16 video inputs, 480 ips, 2000 GB internal storage
DSR163000	16 video inputs, 480 ips, 3000 GB internal storage
DSR164000	16 video inputs, 480 ips, 4000 GB internal storage
DSR320500	32 video inputs, 960 ips, 500 GB internal storage
DSR321000	32 video inputs, 960 ips, 1000 GB internal storage
DSR322000	32 video inputs, 960 ips, 2000 GB internal storage

NOTE: For a DS RealVue XPress system configured as a video acquisition unit (VAU) for use with a Data Management Server (DMS), add "-V" to the model number.

SUPPLIED ACCESSORIES

USB Keyboard
USB Mouse
Power Cord
Keys
Resource Disc
Recovery Disc
Documentation Disc

OPTIONAL ACCESSORIES

KBD300A	KBD300A desktop keyboard with full switching and programming capabilities and joystick control of PTZ functions; requires a KDB300USBKIT or a KBD300USBKIT-X
KBD300USBKIT	Remote keyboard wiring kit (120 VAC) for KBD300A
KBD300USBKIT-X	Remote keyboard wiring kit (230 VAC) for KBD300A

DS REALVUE XPRESS UPGRADES

3590-40037	Upgrade from 8 to 16 video channels
3590-40038	Upgrade from 16 to 32 video channels
3590-40039	Upgrade from 8 to 32 video channels

IP CAMERA LICENSES

(Required for Each Connected IP Camera)

DS-SW-CAM	IP camera license for IP camera or analog camera connected to IP encoder
DS-SW-CAM-P	IP camera license if camera or device is purchased from Pelco
DS-SW-CAM-P4	IP camera license for IP quad camera or 4-port converter if purchased from Pelco

OPTIONAL SOFTWARE AND HARDWARE

AUSRV-SW-1L	Archive utility server software license for first DVMS unit
AUS 2-10L	Archive utility server software license for second to tenth DVMS units
AUS-1L	Archive utility server software license for eleventh or greater DVMS units
3590-00502	ActiveAlert™ 2-camera video analytics for Digital Sentry version 3.0
3590-00504	ActiveAlert 4-camera video analytics for Digital Sentry version 3.0
3590-01067	ActiveAlert 2-camera video analytics for Digital Sentry version 4.0 or later
3590-01068	ActiveAlert 4-camera video analytics for Digital Sentry version 4.0 or later
3590-40046	DS RealVue 500 GB Hard Drive Upgrade Kit

OPTIONAL INTRAVUE NETWORK HEALTH AND EVENT MONITORING APPLICATION

ITNMS-016	48 analog nodes; 16 IP nodes/host
ITNMS-032	96 analog nodes; 32 IP nodes/host
ITNMS-064	192 analog nodes; 64 IP nodes/host
ITNMS-128	384 analog nodes; 128 IP nodes/host
ITNMS-256	768 analog nodes; 256 IP nodes/host
ITNMS-512	1,536 analog nodes; 512 IP nodes/host
ITNMS-ULTD	Unlimited analog nodes; 1,024 IP nodes/host

OPTIONAL EXTERNAL STORAGE

(Available Only on 8-Input and 16-Input Systems)

DX8100HDDI-2250	2.25 TB external RAID 5 storage expansion unit
DX8100HDDI-4500	4.5 TB external RAID 5 storage expansion unit
DX8100HDDI-6750	6.75 TB external RAID 5 storage expansion unit
DX8100HDDI-9000	9 TB external RAID 5 storage expansion unit

Pelco, Inc. Worldwide Headquarters:

3500 Pelco Way, Clovis, California 93612-5699 USA

USA & Canada Tel (800) 289-9100 • FAX (800) 289-9150

International Tel +1 (559) 292-1981 • FAX +1 (559) 348-1120

www.pelco.com

Pelco, the Pelco logo, Digital Sentry, and the Digital Sentry logo are registered trademarks of Pelco, Inc.

Sarix is a trademark of Pelco, Inc.

All product names and services identified throughout this document are trademarks or registered trademarks of their respective companies. The absence of a trademark or registered trademark from this document does not constitute a waiver of intellectual property rights.

Product specifications and availability subject to change without notice.

©Copyright 2010, Pelco, Inc. All rights reserved.