

# DIGIMERGE | Right for Business



## DPV24TLX

# Ultra Resolution Polaris Vision TDN Varifocal IR Vandal Dome

**SMART-IR  
VISION**

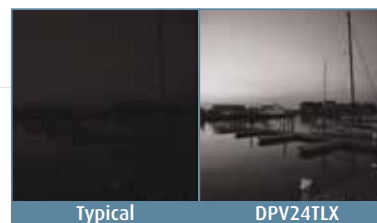
**POLARIS  
VISION 2**



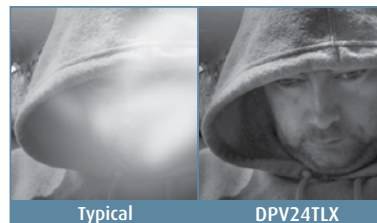
The peak expression of Pinnacle. The DPV24TLX Ultra Resolution Polaris Vision TDN Varifocal IR Vandal Dome combines the advanced feature-sets of other Pinnacle cameras and goes a step beyond. While offering both Polaris Vision and Smart IR options for superior night vision, DPV24TLX also includes an ICR mechanism for True Day/Night. ArcticPro technology enables usage in the harshest of climates with a minimum operating temperature of -40°F.

## Features

- ❖ Sony Super HAD™ II/600TVL
- ❖ Advanced 3D Digital Noise Reduction (3D-DNR)
- ❖ Polaris Vision Low Light Viewing
- ❖ Smart-IR Night Vision (80ft/24m)
- ❖ 2.8-10.5mm Auto Iris D/N Varifocal Lens
- ❖ True Day Night with ICR mechanism (TDN)
- ❖ Electronic Wide Dynamic Range (E-WDR)
- ❖ Highlight Compensation (HLC)
- ❖ ArcticPro technology for harsh climates (minimum temperature -40°F)
- ❖ Privacy Masking/Motion Detection
- ❖ 2S/4S/Octagon Junction Box Compatible
- ❖ Wall/Ceiling Mountable
- ❖ 12V DC/24V AC Operation
- ❖ Service Monitor Output (RCA)



**Polaris Vision 2**



**Smart-IR**



**Electronic Wide  
Dynamic Range**

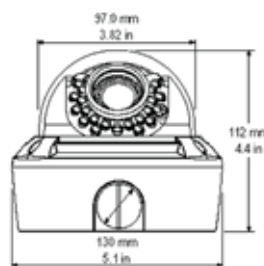


**3D-DNR**

# Specifications

Power Source:	DC 12V / AC 24V $\pm$ 10%
Power Consumption:	10 Watt (heater ON)
Minimum Power Requirement:	900mA (IR, Heater on)
Image Sensor:	1/3" SONY Super HAD II™ High Sensitivity Color CCD
Total Pixels:	811 (H) x 508 (V)
Effective Pixels:	768 (H) x 494 (V)
Scanning System:	2:1 Interlace
Scanning Frequency:	15.734KHz (H) x 59.94Hz (V)
Sync. System:	Internal/Line Lock
Resolution:	600 TV Lines
Min. Illumination:	0.15 Lux/ F1.2(Color) 0.001 Lux w/Sense-Up at x256 0 Lux w/IR LED
Video Output:	1.0 Vp-p (75 ohm, composite)
S/N Ratio:	50dB (AGC OFF)
3D-DNR:	On/Off (Adjustable Gain)
E-WDR:	On (Indoor/Outdoor)/Off
BLC:	BLC/HSBLC/OFF Adjustable Size & Gain
Day & Night:	Color/BW/Auto
Motion Detection:	On/Off (4 Programmable zone)
Sens-up:	Auto/Off (Selectable limit 2x ~ 256x)
Privacy Masking:	On/Off (8 Programmable zone)
White Balance:	AWB/ATW/AWC/Manual/Indoor/Outdoor
Auto Gain Control:	On (low/middle/high)/off
Electronic Shutter Speed:	Auto/Flickerless/Manual
Sharpness:	On/Off (level adjustable)
Flip:	Horizontal/Vertical/Rotate
Effect:	D-Zoom x32 (pan/tilt)/nega/freeze
Setup Method:	OSD setup menu
OSD Language:	English/Korean/Japanese/Chinese
Power Input:	2-Pin terminal block
Video Output:	BNC Connector
Lens Mount:	Fixed mount
Lens:	2.8~10.5mm day/night varifocal lens
Operating Temperature:	-40°C ~ 50°C / -40°F ~ 122°F
Operating Humidity:	0 ~ 90% (non-condensing)
Ingress Rating	IP66
Junction Box Compatibility	2S, 4S, Octagon (with incl. mounting adapter plate)
External Dimensions:	130 x 112 x 97 mm (H x W x D)
Weight:	1.6lbs/0.8kg

## Dimensions



## Product Information

UPC:	8-41430-00681-7
Weight:	2.4lbs / 1.1kg
Package Dimensions: (W x D x H)	170mm x 160mm x 180mm 6.7" x 6.3" x 7.1"
Package Cube:	0.0049 cbm / 0.173cu ft

## What's Included:

User Manual  
Mounting Template  
RCA / BNC Test Cable  
Junction Box Adapter Plate

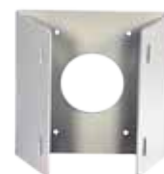
## Accessories:



**MNTV2XC**  
Pendant Mount



**MNTV2XJ**  
Junction Box



**MNTV2XP**  
Pole Mount



**MNTV2XW**  
Wall Mount



**MNTV2XPC**  
Pendant Cap



**MNTV2XR**  
Corner Mount