



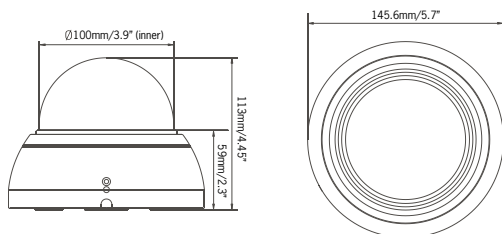
DPD14T-B

Varifocal Indoor DSP Dome Camera

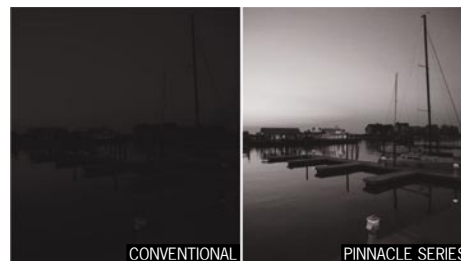


Features:

- 1/3" Super-HAD™ II CCD
- High resolution : 560 TV Lines
- 0.00004lux minimum illumination (@256x Sens-up)
- 2.8~12mm AI aspherical day/night varifocal lens
- Internal/Linelock (phase control) function
- True day/night function (ICR)
- Motion adaptive digital noise reduction (3D-DNR)
- Back Light Compensation (BLC)
- Highlight Compensation (HLC)
- Xtended Dynamic Range (XDR)
- 8-Zone privacy masking function (polygonal mosaic)
- 32x digital zoom
- Horizontal & vertical image mirroring
- Spot video out
- 4S Junction box compatible
- 3-Axis design for wall/ceiling mounting
- Auto Sensing DC12V & AC24V

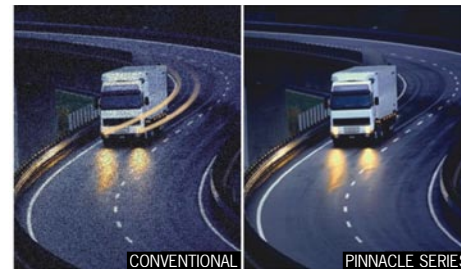


POLARIS VISION 2



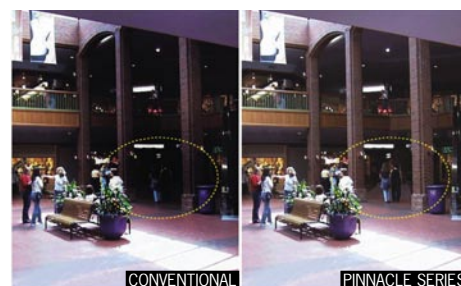
The minimum illumination level of Polaris Vision 2 cameras is down to 0.00004Lux which enables users to get recognizable images under extreme low light conditions. Combined with advanced digital noise reduction (3D-DNR) technology images are clear and in-focus.

3D-DNR



The Pinnacle series is equipped with 3D-DNR Technology, the highest level of Digital Noise Reduction technology which virtually eliminates blur during low-light conditions which enables users to clearly capture images. Compared to conventional 2D-DNR, 3D-DNR technology dramatically cleans up the noise in video frames, especially when capturing moving images in low-light conditions. This substantially reduces the amount of HDD storage required for DVR recording.

XDR



In strong backlight or high contrast applications, most conventional CCTV cameras lose details in the dark portion of the image. The Pinnacle Series provides excellent image quality by using XDR technology which properly renders the bright portion of the image and extends dynamic range in the dark area of the image by increasing sensitivity of the camera.

HLC



The Pinnacle Series is equipped with HLC (Highlight Compensation) function which effectively inverts strong lights (such as car headlights) to provide clearer images and increases brightness level of the rest of the image which on a typical CCD camera would be darkened to compensate for bright spots (BLC function)

Specifications:

Camera

Power Source:	DC 12V / AC 24V \pm 10%
Power Consumption:	3.0 Watts
Image Sensor:	1/3" SONY Super HAD II™ High Sensitivity Color CCD
Total Pixels:	811 (H) x 508 (V)
Effective Pixels:	768 (H) x 494 (V)
Scanning System:	2:1 Interlace
Scanning Frequency:	15.734KHz (H) x 59.94Hz (V)
Sync. System:	Internal/Line Lock
Resolution:	560 TV Lines
Min. Illumination:	0.25lux color / 0.01lux B/W (50IRE, F1.2) 0.001lux color / 0.00004lux B/W (@ x256 Sens-up)
Video Output:	1.0 Vp-p (75 ohm, composite)
S/N Ratio:	50dB (AGC OFF)
3D-DNR:	On/Off (Adjustable Gain)
XDR (D-WDR):	On (Indoor/Outdoor)/Off
BLC:	BLC/HSBLC/OFF Adjustable Size & Gain
Day & Night (True D/N):	Color/BW/Auto (Filter auto change)/EXT
Motion Detection:	On/Off (4 Programmable zone)
Sens-up:	Auto/Off (Selectable limit 2x ~ 256x)
Privacy Masking:	On/Off (4 Programmable zone)
White Balance:	AWB/ATW/AWC/Manual/Indoor/Outdoor
Auto Gain Control:	On (low/middle/high)/off
Electronic Shutter Speed:	Auto/Flickerless/Manual
Sharpness:	On/Off (level adjustable)
Flip:	Horizontal/Vertical/Rotate
Effect:	D-Zoom x32 (pan/tilt)/nega/freeze
Setup Method:	OSD setup menu
OSD Language:	English/Korean/Japanese
Power Input:	2-Pin terminal block
Video Output:	BNC Connector
External I/O Terminals:	Alarm output, day/night input
Lens Mount:	Fixed mount
Lens:	2.8~12mm AI aspherical day/night varifocal lens
Operating Temperature:	-10°C ~ +50°C / 14°F ~ 122°F
Operating Humidity:	0 ~ 96% (non-condensing)
External Dimension:	146 x 113 mm (Bubble Diameter Ø100)
Weight:	450g/0.99lbs

Product Information:

UPC:	8-41430-00562-9
Weight:	0.64kg / 1.4lb
Package Dimensions: (W x D x H)	170 x 170 x 170mm / 6.7 x 6.7 x 6.7"
Cube:	0.0049cbm / 0.174cu ft

Accessories:

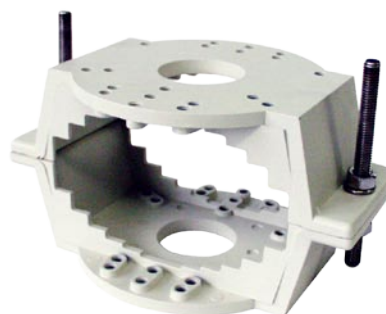
MNTV1XWC

Wall/Ceiling Mount



MNTV1XP

Pole Mount



MNTV1XR

Corner Mount

