

MAIN FEATURES

Microprocessor controlled

Virtual keyboard with configurable touch-screen display

RS485 communication

Ergonomic design

Telemetry controlled by joystick

DESCRIPTION

The DCT represents the top of the keyboard line for performance and ergonomic design. A back-lit graphic display with touch-screen helps the operator during all the control functions. It is possible to customize up to 30 user maps (graphic user interface), associating up to 40 keys (macro-command *) for each map. The start-up image and service pages can be customized as well.

An easy PC graphic user interface allows the maps design, simply uploaded on the keyboard through RS232 serial connection. The same connection allows the keyboard set-up and firmware update. If the maps (graphic user interface) are not used, the touch-screen keyboard can be customized using the 35 macro-function keys. The DCT is supplied with 6 languages menu but it can manage up to 12 programmable languages.

The microprocessor controlled DCT allows you to interface and control SM42B-SM82B, SM84B-SM164B and SM328B matrix. The operator can set up the SM42B-SM82B, SM84B-SM164B and SM328B matrix through the On Screen Display.

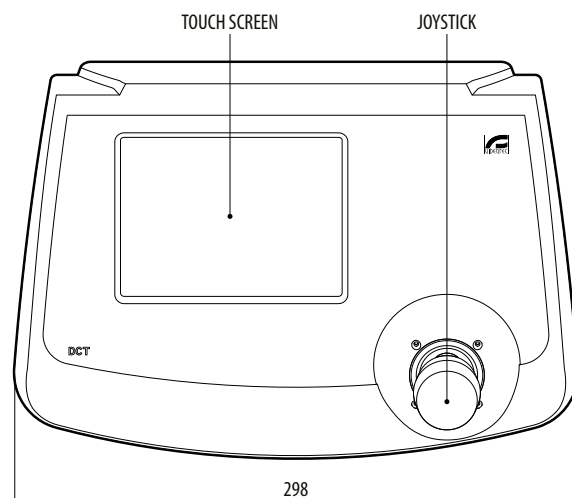
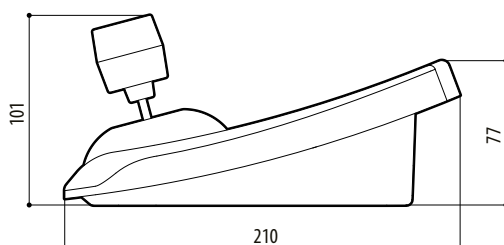
This touch-screen keyboard can control up to 10.000 telemetry receivers, the preset and patrol functions together the DTRX3 or DTRXDC receivers. The three axis joystick allows a simple manual control and gives the possibility of controlling variable speed Pan & Tilt, and to interface the most common high speed domes.

Three serial RS485 communication lines: one to the video matrix or multiplexer/DVR, two for the management of two independent telemetry lines.

** More functions associated to the same key (for example: camera selection and scan command at the position 2).*



DCT



DCT

TECHNICAL DATA

GENERAL

Joystick for Pan/Tilt/Zoom and menus control

Graphic display 320x240 pixel backlit by white LED

Ergonomic design

Menu in 6 languages (Italian, English, French, German, Spanish and Dutch) expandable to 12 (management by the programmer)

Three password levels: connection, set-up, alarm reset

Three passwords for the graphic environment management

Customization up to 30 user maps and ability to set-up up to 40 keys (macro-command) for each map

35 functions keys (macro-command) freely configurable

Up to 10000 cameras, 10.000 (lines A) + 10.000 (lines B) telemetry receivers, 100 monitors

Alarm and/or breaks communication buzzer

Supplied with instruction manual, wide range power supply, 3 power cables, 6 RJ11 telephone cables, 6 jack shunt boxes RJ11 and applications for the management of the keyboard on PC

MECHANICAL

Thermo-resistant and shock proof ABS material

Dimensions: 298x107x210mm (11.7x4.2x8.2in)

3 axis proportional joystick

Graphic display dimensions: 115x86mm (4.5x3.4in)

3 connectors RJ11

Power supply jack connector

DB9 connector

Configuration Dip-Switch

ELECTRICAL

Power supply

- IN 100-240Vac - OUT 12Vdc, 47/63Hz, 1A

PROTOCOLS

Video Line

- VIDEOTEC (1200, 9600, 19200, 38400 baudrate)
- MACRO (1200, 9600, 19200, 38400 baudrate)

Telemetry Line

- VIDEOTEC (1200, 9600, 19200, 38400 baudrate)
- MACRO (1200, 9600, 19200, 38400 baudrate)
- PELCO D (2400, 4800, 9600, 19200 baudrate)

COMMUNICATIONS

Three RS485 lines for communication

- one direct line with video matrix and multiplexer/Dvr to maximum 1200m (3937ft)
- two lines for two independent telemetry daisy chain up 10.000 telemetry receivers for line to maximum 1200m (3937ft)

Serial connection RS232 to PC for graphic layout creation, keyboard set-up and firmware update controllable to a maximum of 15m (49ft)

INTERFACE WITH OTHER PRODUCTS

Multiplexer

- ADEMCO, SANYO, SONY

DVR

- ENEO, SAMSUNG, SANYO, SONY

Dome

- AMERICAN DYNAMICS, BOSCH, ELBEX, EL.MO., ERNITEC, HITRON, JVC, KALATEL, MARK&MERCER, PANASONIC, PELCO, SAMSUNG, SANYO, SANTEC, VCL

Telemetry receiver

- ENEO

FREE DEVICE

- The keyboard allows the control of multiplexers, DVR, PC or other devices through the implementation of the proprietary Macro Protocol. The graphical user interface and the control keys can be freely associated by the user/installer. The total number of commands is 128; in the main layout up to 30 command keys can be freely handled

ADEMCO, AMERICAN DYNAMICS, BOSCH, ELBEX, ELMO, ENEO, ERNITEC, HITRON, JVC, KALATEL, MARK, MERCER, PANASONIC, PELCO, SAMSUNG, SANTEC, SANYO, SONY, VCL. are registered trademarks. Because DCT may be interfaced with equipment not manufactured by VIDEOTEC, it is possible that the interface protocols have changed or are in a different configuration from earlier tested units from us. Because VIDEOTEC recommends a bench test prior to installation, VIDEOTEC will not be liable for any installation costs or lost revenues in the event a compatibility problem will occur.

ENVIRONMENT

Indoor

Operating temperature: 0°C / +40°C (+32°F / +104°F)

CERTIFICATIONS

CE EN61000-6-3, EN60950-1, EN55022 Class B, EN50130-4

FCC Part. 15 Class B

UL listed

RELATED PRODUCTS

SM42B-SM82B Matrix 4/8 inputs and 2 outputs

SM84B-SM164B Matrix 8/16 inputs and 4 outputs

SM328B Matrix 32 inputs and 8 outputs

MICRODEC485 Mini telemetry receiver 8 functions, 24Vac

DTMRX224 Telemetry receiver 12 functions, 24Vac

DTMRX2 Telemetry receiver 12 functions, 230Vac

DTRX324 Telemetry receiver 17 functions, 24Vac

DTRX3 Telemetry receiver 17 functions, 230Vac

DTCOAX Over the coax board for DTRX3 only trough matrix series SM

DTRXDC Telemetry receiver 13 functions, for PTH355P

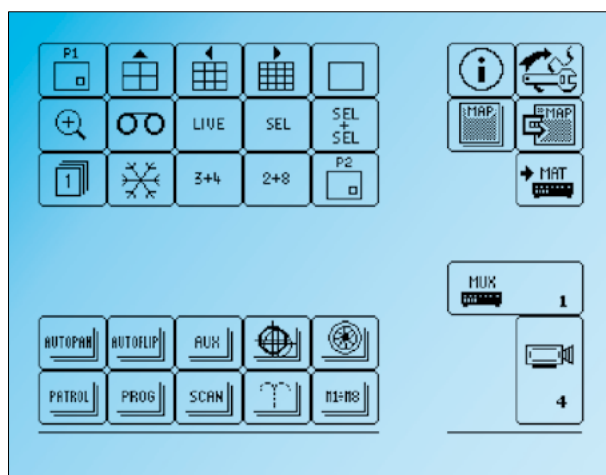
ULISSE Positioning Unit

Retrofit on discontinued products: contact VIDEOTEC for further specifications.

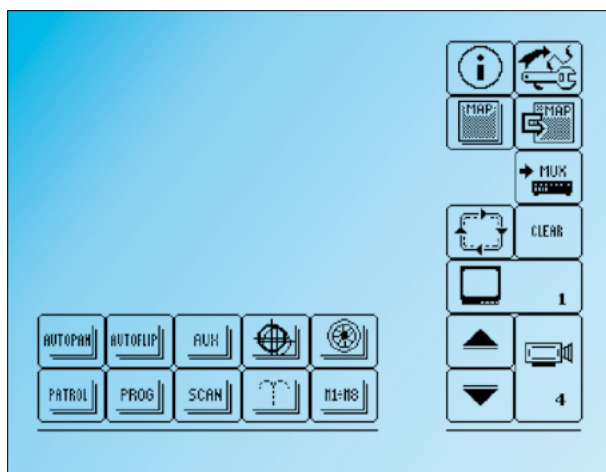
PACKAGE

Code	Unit weight		Package weight		Package dimensions (WxHxL)		Master carton
	kg	lb	kg	lb	cm	in	
DCT	1.1	2.4	3.8	8.4	24.0x14.5x41.0	9.4x5.7x16.0	4

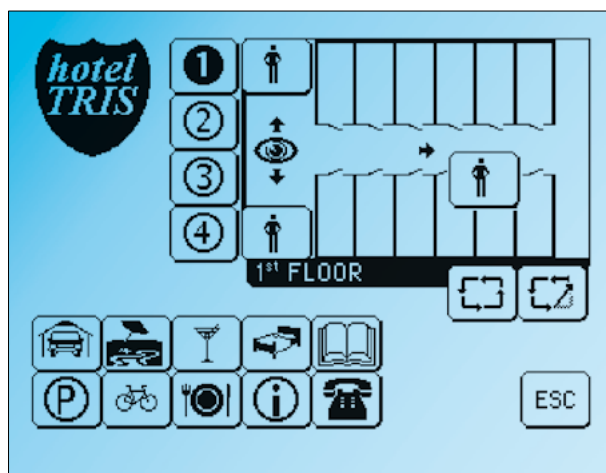
TOUCH-SCREEN DISPLAY



EXAMPLE OF SCREEN LAYOUT FOR MULTIPLEXER AND TELEMETRY CONTROL

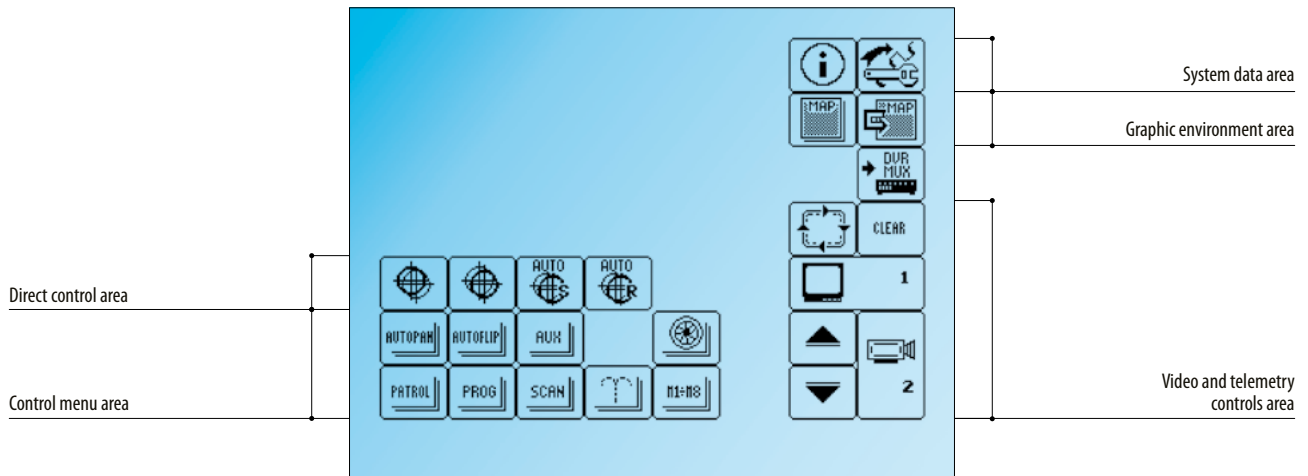


EXAMPLE OF SCREEN LAYOUT FOR MATRIX AND TELEMETRY CONTROL

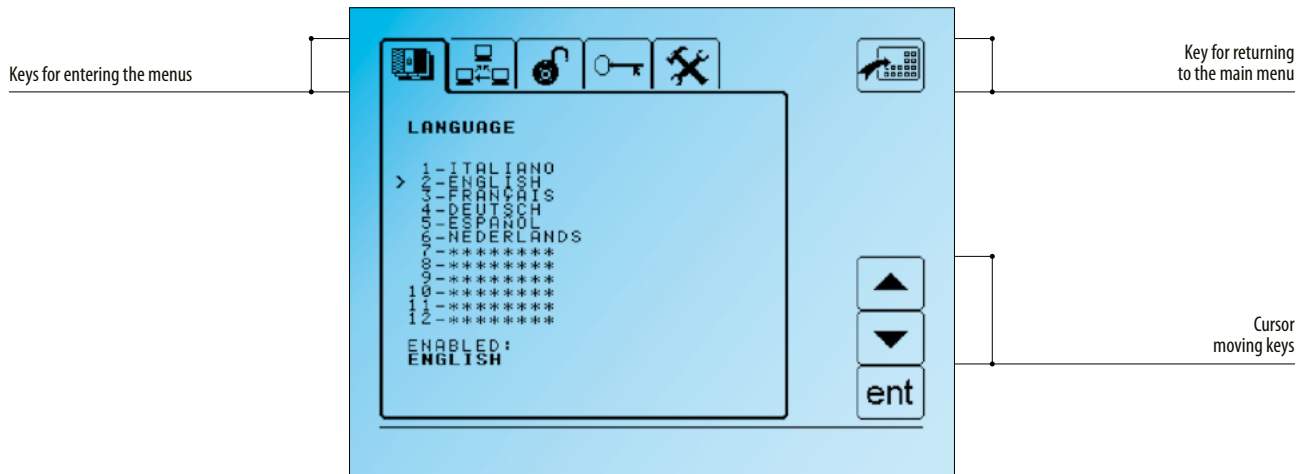


EXAMPLE OF SCREEN LAYOUT OF THE GRAPHIC INTERFACE

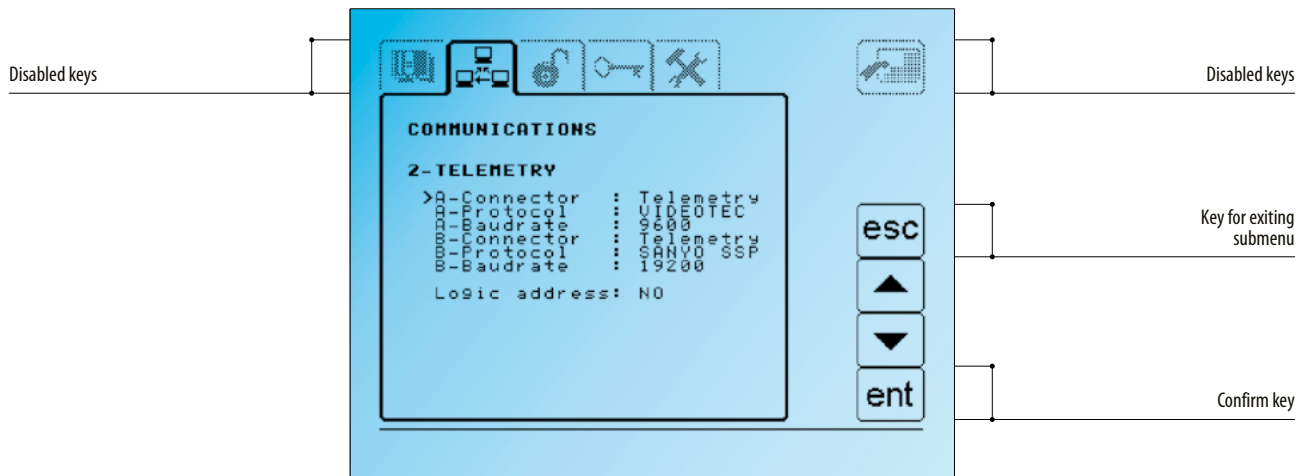
KEYBOARD SETUP



EXAMPLE: MAIN MENU. IT REPRESENTS ONLY ONE OF THE POSSIBLE SYSTEM CONFIGURATIONS

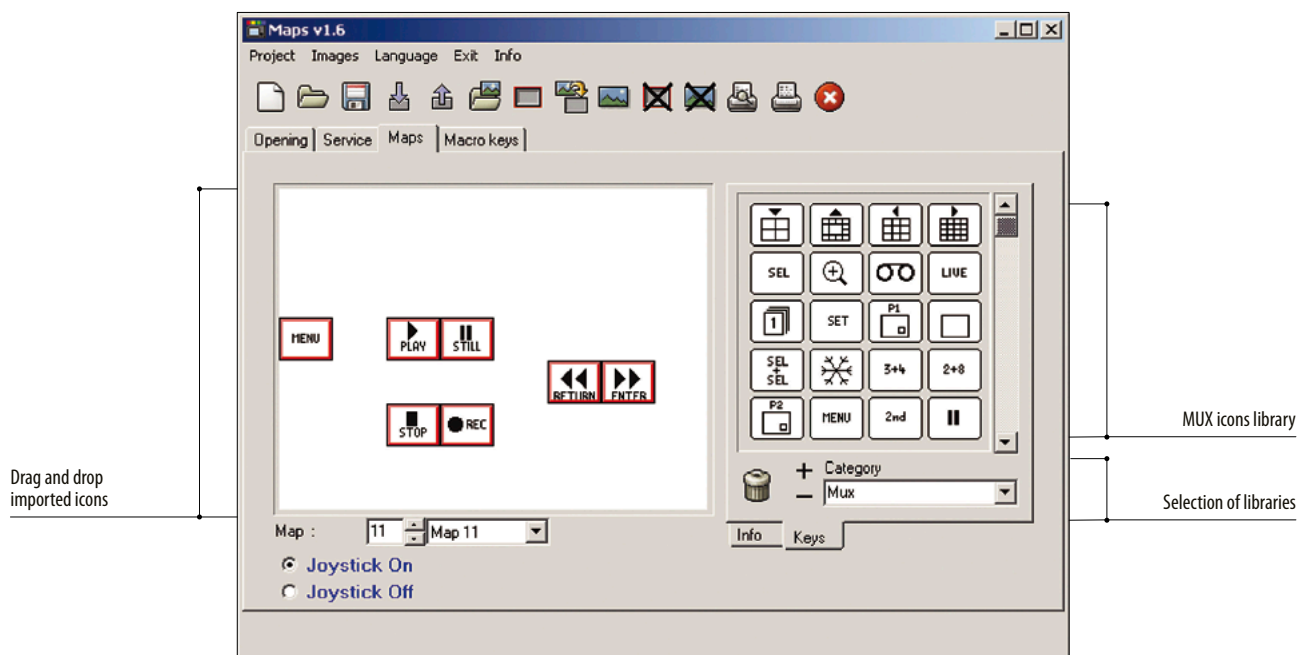


EXAMPLE: LANGUAGE MENU

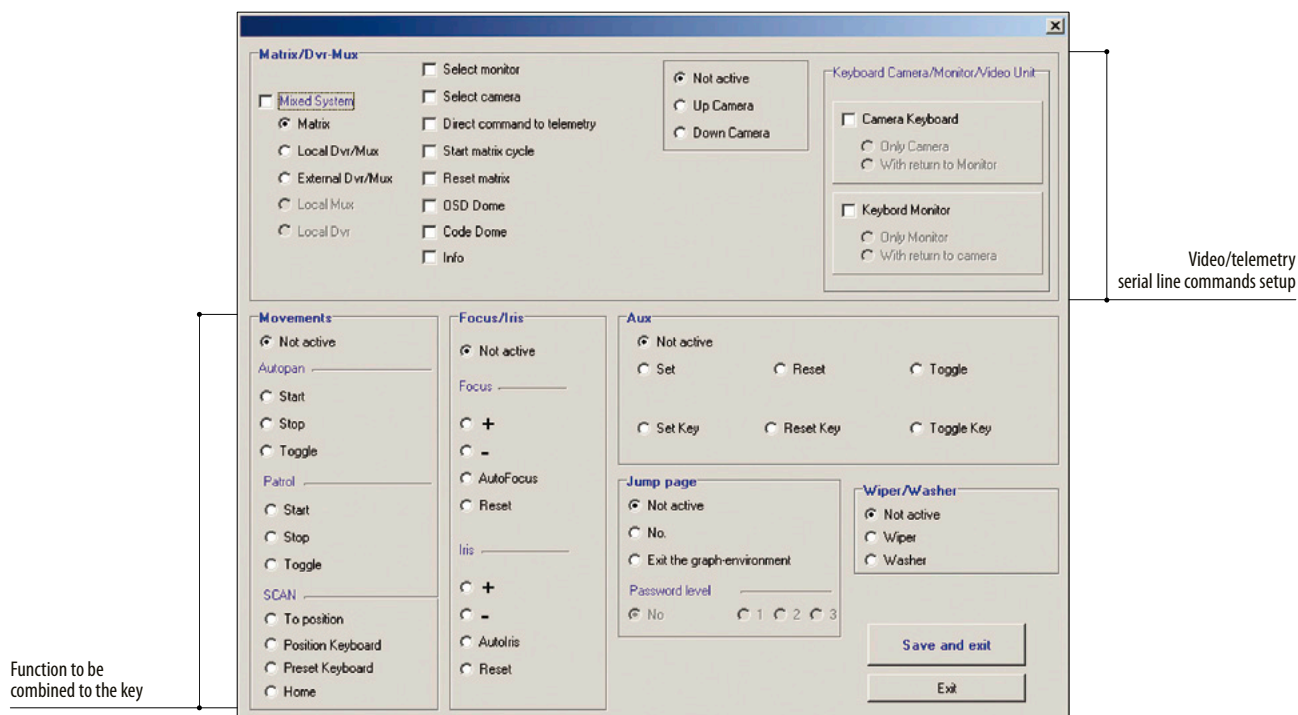


EXAMPLE: COMMUNICATION/TELEMETRY SUBMENU

GRAPHIC USER INTERFACE SETUP FROM PC

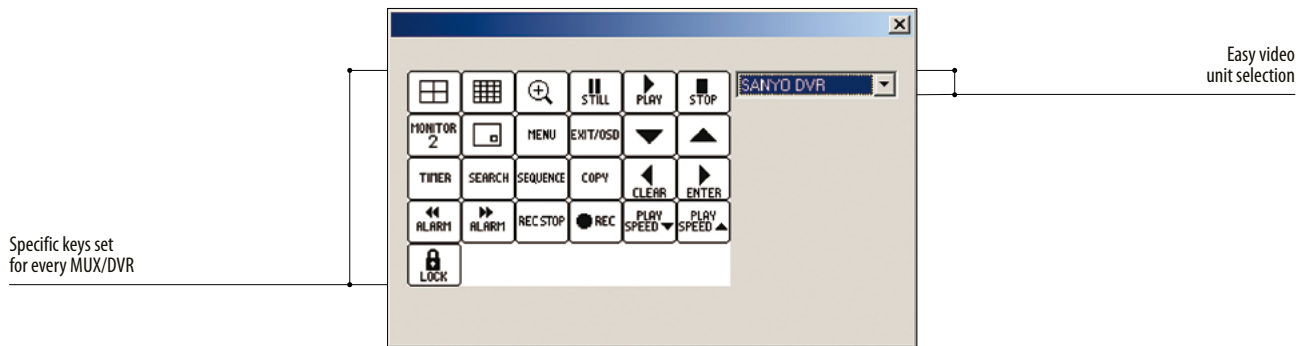


THE CUSTOMIZATION OF THE KEYBOARD IS EXTREMELY EASY DUE TO THE PC SOFTWARE. THE SOFTWARE ALLOWS YOU TO IMPORT MAPS, IMAGES, ICONS LIBRARIES AND TO EASILY IMPLEMENT THE KEYS. MANAGEMENT UP TO 30 GRAPHIC USER INTERFACE



AT EVERY KEY MULTIPLE FUNCTIONS CAN BE ASSIGNED IN ORDER TO CONTROL VIDEO AND TELEMETRY DEVICES (EVEN COMBINED)

GRAPHIC USER INTERFACE SETUP FROM PC



SPECIFIC KEYS FOR CONTROL OF DIFFERENT MUX AND DVR'S ALLOW YOU TO EASILY SELECT THE REQUIRED FUNCTIONS. CHOOSING THE DEVICE, THE AVAILABLE FUNCTIONS WILL BE SHOWN WITH THE GRAPHIC FORMAT OF THE DEVICE ITSELF