

Bullet Camera

Day/Night, 550 TV Lines, 60 IR LED Weatherproof Bullet Camera

CB-HD65N-L

NTSC



KEY FEATURES

- 1/3" CCD Sensor
- 550 TV Lines (Color), 600 TV Lines (B/W)
- 6–50mm, DC Auto Iris
- Day/Night Functionality with ICR
- 0.3 Lux (Color), 0.00 Lux (B/W, IR LED On)
- 60 IR LEDs
- Adjustable IR LED Intensity
- Service Monitor Output
- 12VDC/24VAC Dual Voltage

CONSTRUCTION

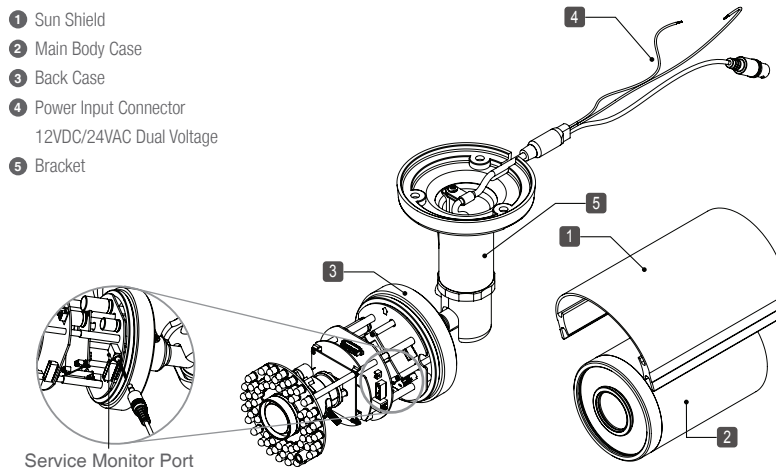
- 3-Axis Aluminum Bracket (Wire feed-through)
- Weatherproof Aluminum Housing

TECHNICAL SPECIFICATIONS

Technical Specifications	CB-HD65N-L
Video Format	NTSC/PAL
Image Sensor	1/3" CCD
Horizontal Resolution	550 TV Lines (Color), 600 TV Lines (B/W)
Day/Night Functionality	Yes w/ ICR
Lens Type (DC Auto Iris)	Vari-focal 6mm-50mm
Angle of View	54°(W) ~ 7.6°(T)
IR LED	60
IR LED Distance	Up to 200ft.
LED Illumination Angle	20°
Sync System	Internal
Effective Pixels (HxV)	768(H) x 494(V)
Scanning System	525 Lines. 2:1 Interlaced
Electronic Shutter	1/60 sec.
Main Video Output	1.0 Vp-p Composite, 75 ohm
Service Monitor Output	1.0 Vp-p Composite, 75 ohm
Minimum Illumination	0.3 Lux (Color), 0.00 Lux (B/W, IR LED On)
S/N Ratio	More than 50dB (AGC Off)
Camera Control & Setup	Dip Switch Menu
General Information	CB-HD65N-L
Operating Temperature	23°F ~ 113°F
Operating Humidity	Within 90% RH
Power Consumption	1 Amp (LED On), 500 mA (Camera Only)
Input Voltage	12VDC/24VAC Dual Voltage

*specifications are subject to change without any prior notice.

PART NAMES AND LOCATIONS



DIMENSIONS

Unit: mm

