



MODEL BX-9F FLUSH (IN WALL),
MODEL BX-9S SURFACE (ON WALL),

WALL-MOUNTING BACK BOXES for TOA 900 SERIES IN-WALL AMPLIFIERS

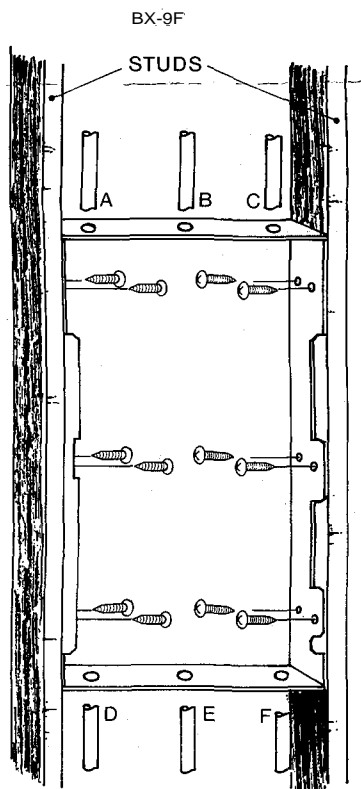
DESCRIPTION

The TOA models BX-9F and BX-9S are back boxes to mount the TOA In-Wall Amplifiers model W-906 and W-912. The BX-9F is for flush mounting in any 4-inch wall and the BX-9S for surface mounting on wall.

MOUNTING

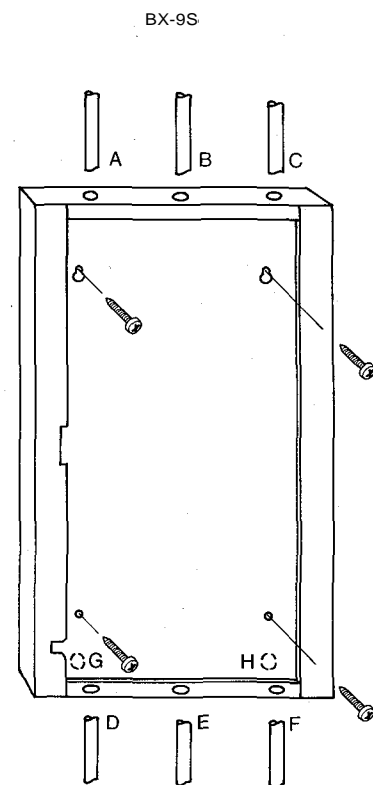
1. BX-9F for flush mounting

Mount the BX-9F between the wall studs and secure it as illustrated below using 12 wood screws (supplied with the BX-9F). Its front edges should be flush with the wall surface, otherwise when fixed, the front panel is distorted or a gap is produced between the wall surface and the amplifier front panel.



2. BX-9S for surface mounting

Mount on the wall surface as illustrated and secure it with 4 wood screws (supplied with the BX-9S) or with any other screws suitable for the wall construction.



TOA Corporation

PIPING AND WIRING

The BX-9F is provided with a total of 6 half-inch sized knock-out holes (3 at the top and another 3 at the bottom) and the BX-9S has 8 (3 each at the top and bottom and another 2 on the rear panel). See illustrations.

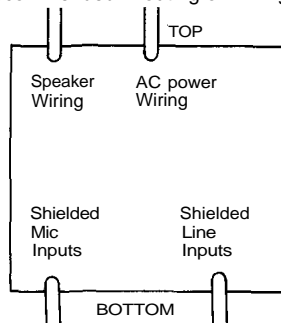
Make AC power wiring through knock-out hole B, under which an amplifier junction box is mounted. (Only BX-9S permits AC power cable routing through knock-out hole E.) Use knock-out hole A or C for speaker wiring and D through H for input wiring.

CAUTION: *AC power cable must be located in separate conduit.

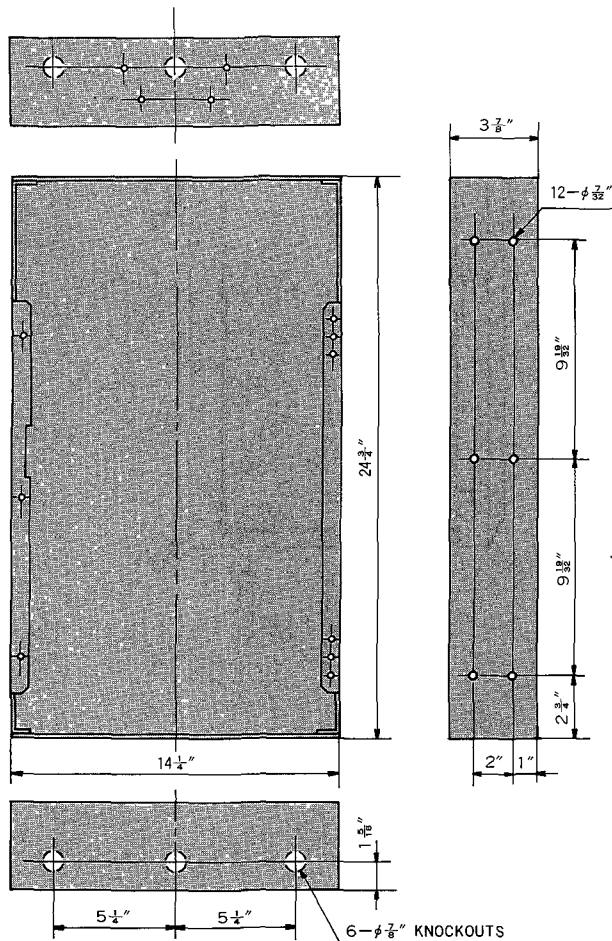
*Speaker and input wiring must not be contained in the same conduit to prevent the amplifier from oscillating.

NOTE: Use shielded cables for input wiring. It is desirable that microphone and line input wiring are not contained in the same conduit.

Recommended Routing of Wiring



DIMENSIONS BX-9F



AMPLIFIER MOUNTING

For installation of the amplifier, refer to amplifier instruction manuals.

SAFETY CONSIDERATIONS

In a building under construction, the back box is almost always installed several weeks in advance of the amplifier installation to allow installation of AC power and audio lines as an integral part of the building. Entry of wiring is made through the back box, but can not be properly terminated until the amplifier is actually installed. In this situation, it is mandatory that local wiring codes and ordinances be followed for safety purposes to prevent exposure to live AC power wires.

WARNING: It is recommended that AC power be turned off to the back box and that the AC power wires are properly insulated to prevent possible electrical shock hazard.

DIMENSIONS BX-9S

