

High-Resolution, Weatherproof Ball Camera



This camera's ball-shaped housing can be rotated 350° and tilted 90° during installation.

The ultra compact and weatherproof Ball Camera features a gray or black Lexan® housing that can be rotated 350° and tilted 90° during installation. It can be mounted to a ceiling, wall, or over a single gang box. It will withstand temperatures ranging from 14 to 122 °F (-10 to 50 °C).

The Ball Camera can be ordered with a black-and-white

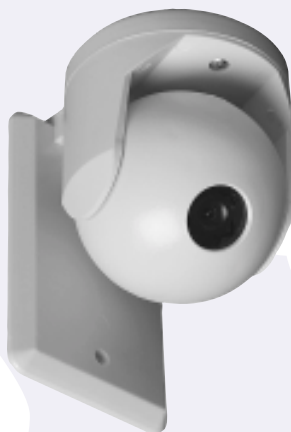
camera that delivers 580 TV lines of resolution and is sensitive to 0.1 lux, a color camera that delivers 480 TV lines of resolution and is sensitive to 1.0 lux, or a color/monochrome camera that delivers 480 TV lines of resolution. During the day, the color/monochrome camera provides a high-resolution, color image that is sensitive to

Features

- Weatherproof housing operates in temperatures from 14 to 122 °F (-10 to 50 °C).
- Gray or black Lexan construction
- Compact—only 3.0 inches (76.2 mm) high
- Ball can be rotated 350° and tilted 90° during installation
- Can be mounted on the ceiling, to a wall, or over a single gang box
- High-resolution black-and-white, color, or color/monochrome camera
- Various fixed lens options: 2.5, 4, 6, 8, or 12 mm.
- 10 to 40 VDC / 18 to 30 VAC input voltage

1.0 lux. During low-light conditions, the camera will respond to IR illumination from an IR source (such as an IR lamp or LEDs), providing a clear, high-quality image under 0-lux visible light.

The Ball Camera is available with a 2.5-, 4-, 6-, 8-, or 12-mm lens. It accepts a 10 to 40 VDC / 18 to 30 VAC input voltage.



Discreet Design

The Ball Camera's ultra compact and discreet housing is available in black or gray Lexan.



GE Interlogix

**Product
Specification**

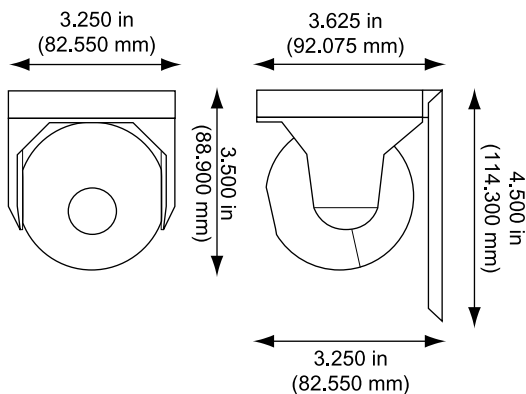
© 2002 Kalatel, a GE Interlogix company

Technical Specifications

Common Camera Specifications (Black-and-White, Color, and Color/Monochrome)

Signal system:	NTSC/EIA standard or PAL/CCIR option
Image sensor:	1/4-in. interline transfer Sony super HAD CCD
Effective picture elements:	811 (H) x 508 (V)
Scanning system:	2:1 interlace—525 lines, 60 fields (NTSC/EIA); optional 625 lines, 50 fields (PAL/CCIR)
Signal-to-noise ratio:	Better than 50 dB (AGC off)
AGC:	Max 36 dB
Backlight compensation:	Automatic histogram on (under AES), center window weighted
Synchronization:	Internal / line lock AC (phase adjustable)
Gamma compensation:	0.45
Video output:	1.0 V pk-pk 75 ohm unbalanced
Electronic shutter:	AES 1/50 (1/60 sec) – 1/100,000 sec
Power supply:	10 – 40 VDC / 18 – 30 VAC, isolated, reverse polarity protected
Operating temperature:	14 to 122 °F (-10 to 50 °C)
Weight:	1.8 lb (820 g)

Dimensions



Black-and-White Camera

Resolution:	580 TVL
Sensitivity:	0.1 lux @ f1.4 (minimum illumination); 0.01 lux (faceplate)
Power consumption (per camera):	125 mA; 1.5 W @ 12 VDC, 3 W @ 24 VAC

Color Camera

Resolution:	480 TVL
Sensitivity:	1.0 lux @ f1.4 (minimum illumination); 0.1 lux (faceplate)
White balance:	Auto tracking white balance 2500 to 9500 K
Power consumption (per camera):	160 mA; 1.9 W @ 12 VDC, 3.8 W @ 24 VAC

Color/Monochrome Camera

Sync system:	Internal/line-lock (auto fix zero-cross)
Horizontal resolution:	480 TV lines
Minimum illumination:	1.0 lux @ f1.4; 0 lux under infrared illumination
Infrared wavelength:	From 780 nm to 1000 nm
Aperture correction:	H aperture and V aperture
Gain:	Max gain 36 dB
Signal-to-noise ratio:	Better than 51 dB
Backlight compensation:	Automatic histogram and window's weight BLC
Power consumption (per camera):	2.4 W @ 12 VDC, 3.1 W @ 24 VAC

BC-□□00-□□-□

Camera	Lens	Housing Color
12 B/W	25 2.5 mm	Blank Gray
15 Color	04 4 mm	B Black
18 Color/Monochrome	06 6 mm	
	08 8 mm	
	12 12 mm	

Ordering Information

Choose your camera, lens, and housing color option to determine the model number of the Ball Camera that meets your specifications.



GE Interlogix
Kalatel

MAILING ADDRESS
Kalatel
4575 Research Way, STE 250
Corvallis, OR 97333, USA
www.kalatel.com

AMERICAS
800-469-1676 (US only)
tel 541-754-9133
fax 541-754-7162

ASIA
tel 852-2907-8108
fax 852-2142-5063

AUSTRALIA
tel 61-3-9259-4700
fax 61-3-9259-4799

EUROPE
tel 32-2-725-11-20
fax 32-2-721-86-13

LATIN AMERICA
tel 561-912-5321
fax 561-994-6224