

VOLTAGE

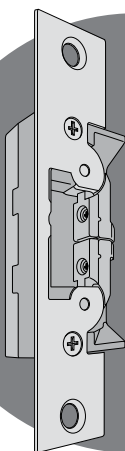
Field selectable to match power source of 12, 16, or 24 VAC/VDC.

CURRENT DRAW/AMPS

Volts	AC	DC
12	.163	.440
16	.228	.458*
24	.084	.230

*Requires 16 VDC adapter (P/N VA 7400-16VDC)

Opens electrically under 35lbs. of preload!



Using jaw inserts of various sizes, the UltraLine 7400 Series electric strikes are adjustable to compensate for door and frame related preload and security problems.



Intertek

Listed for Burglary Resistance (UL1034)

Case

Approx. 1" x 3-3/8" x 1-1/16" deep. Zinc-aluminum alloy.

Strike Lip

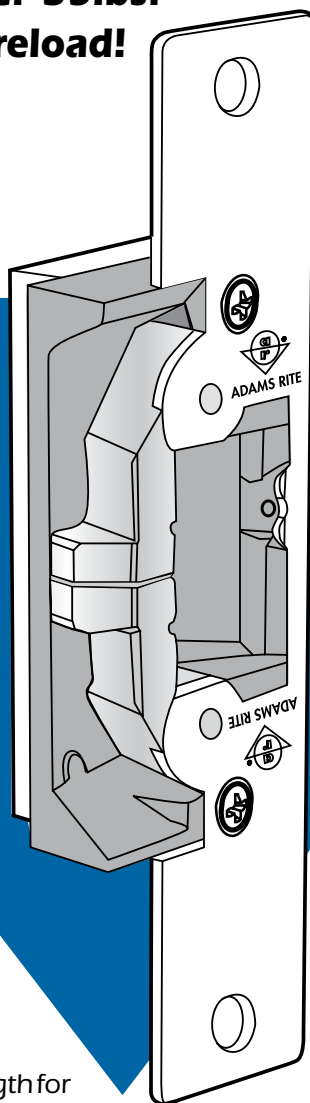
Basic 7400 strike has lip of proper length for 1-3/4" thick door that closes flush with jamb edge. Where door thickness or jamb shape differs from this standard relationship, lip extension kits available. (Not available on 7431.)

Fail-Safe/Fail-Secure

Field selectable at time of installation.

Strike Opening

5/8" Adjustable x 1-7/16" x 1/2" deep. Bolt retainer jaw is stainless steel. Strike accepts bolt of any Adams Rite 4500/4700/4900 Series deadlatch or cylindrical latches.

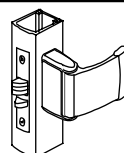


ULTRA LINE

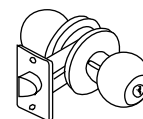
7430, 7431

ANSI/BHMA Type EO9321 (Grade 1)

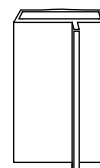
LATCH TYPE



Adams Rite or Cylindrical Latches with 1/2" to 5/8" Projection

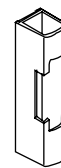


DOOR FRAME TYPE



7430

Aluminum Jamb



7431

Aluminum Stiles

Faceplate

Measures 1-1/4" x 6-7/8". 7430 has flat faceplate; 7431 is radiused to match nose on inactive leaf in a pair of aluminum stile glass doors. Available in a wide range of architectural finishes.

Function

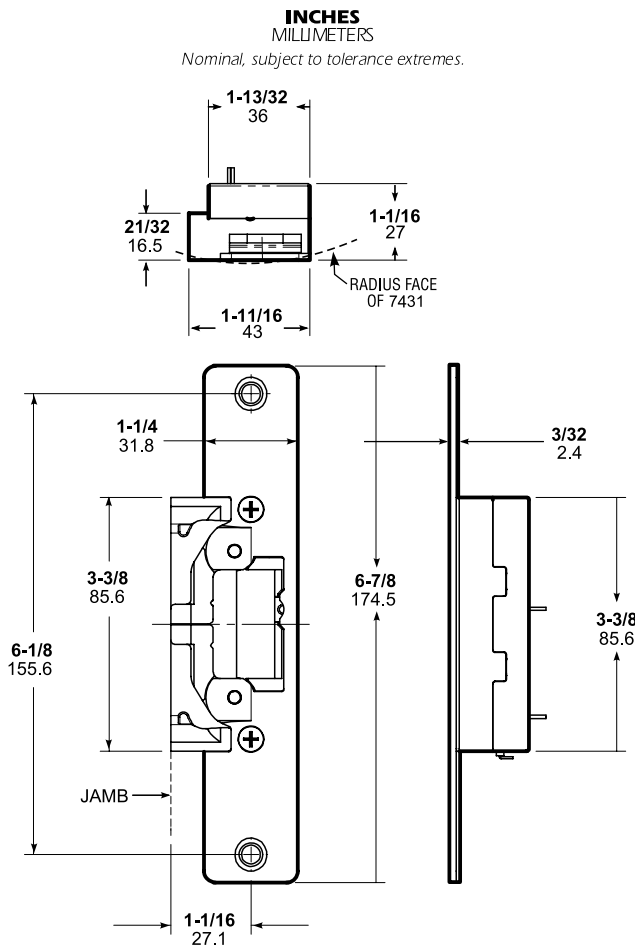
Remote electrical control of any narrow stiled or hollow metal door equipped with an Adams Rite Series 4500/4700/4900 (or similar) deadlatch. Large faceplate is designed to cover strike opening when converting from an MS[®] pivoted-bolt deadlock to a deadlatch. Electrical actuation unlocks strike jaw, releasing latchbolt so door can be opened without operating latch itself. Extremely compact mechanism fits into jamb sections as shallow as 1-1/16". Direct replacement for earlier 7030/7130/7530/7830 Series.

This non-handed strike features an ultra-compact design and an adjustable stainless steel split-jaw with over 2400lbs. of holding force in fail-secure mode. The strike releases electrically with up to 35lbs. of door "preload" (pressure exerted on doors by air conditioning systems, warping or misaligned hardware which can disable common electric strikes). Single solenoid operates on 12, 16, or 24 volt AC/DC power. Strikes are equipped with a quick connect plug-in type connector.



7430, 7431 Electric Strikes

DIMENSIONS



STANDARD UNIT FITS DIM "A" 1-1/16" (SEE DASH NO.)
MOUNTING BACKSETS FURNISHED

HOW TO ORDER

Specify quantity and the following information.
Order related hardware separately.

Fail-secure can be
field converted to
fail-safe or vice versa.

Specify Model

7430 Flat
7431 Radius

Options

- None
M Monitored

7430 **M** **628**

Finish

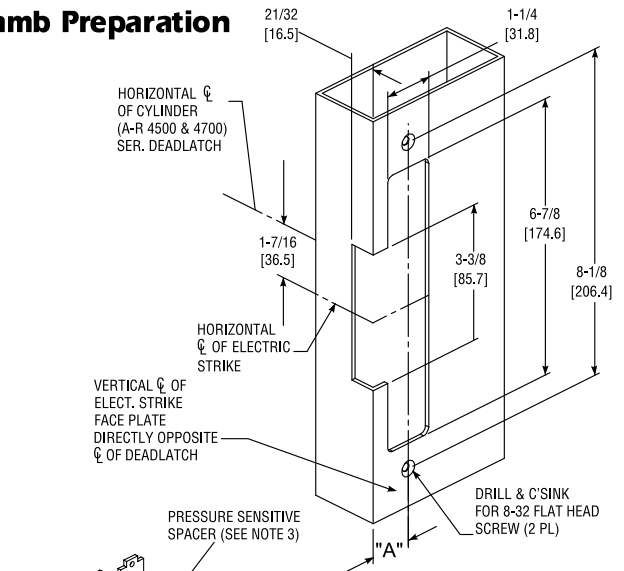
628 Clear Anodized
313 Dark Bronze Anodized
335 Black Anodized

Ritecoat Finish (7431 only)

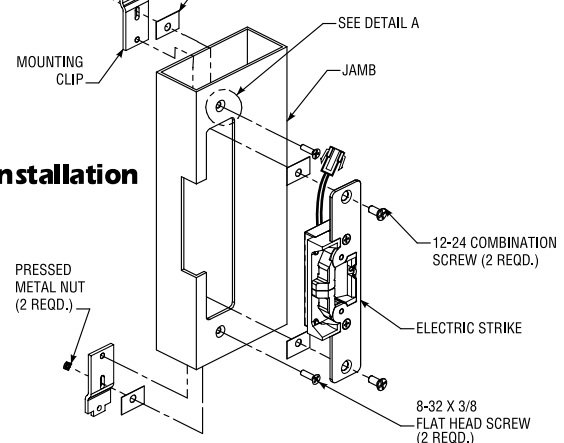
130 to match 628 Clear Anodized
121 to match 313 Dark Bronze Anodized
119 to match 335 Black Anodized

INSTALLATION

Jamb Preparation



Installation



STANDARD PACKAGE

Individually boxed with mounting screws, mounting tabs, adhesive shims to accommodate jamb or stile extrusion thickness greater or less than nominal 1/8", an adjustable jaw shim pack and two plug-in voltage adapters for 12/16/24 VAC and 12/24 VDC.

OPTIONS

Monitoring - Two internally mounted switches (Form "C") to indicate when the latchbolt is engaged in the strike jaws and a locked/unlocked solenoid status. See page ES-7 for more details.

Power Sources - 4605/4606 Transformer, 4603 Rectifier, and PS-1 Power Supply. See page ES-7 for more details.

Lip Extension Kits - See page ES-7 for a complete list.

Modular Packaging - Consult factory or sales representative for details.

ELX-ElectroLynx™ Adapter - Connects Adams Rite electrified products to ElectroLynx system.

16 VDC Adapter - VA7400-16VDC required when using 16VDC power.