

VOLTAGE

Available in 12, 16 or 24 volt AC and DC. DC and AC Continuous units are silent, AC intermittent units "buzz" on operation.

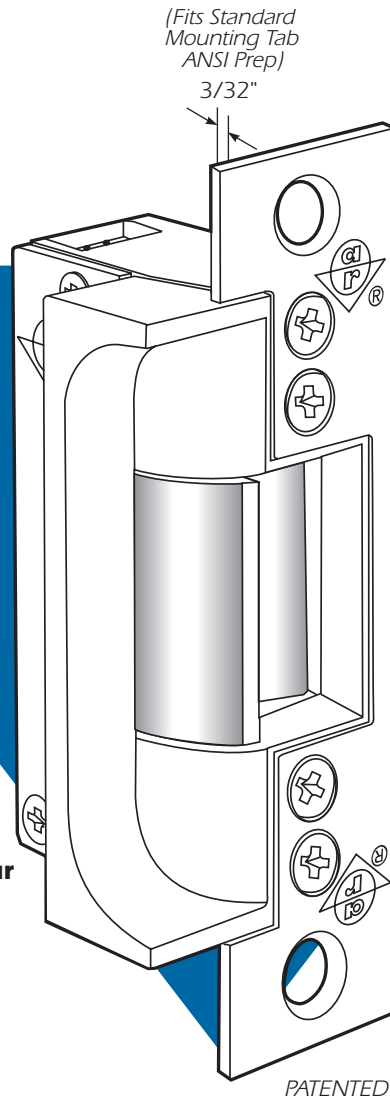
CURRENT DRAW/AMPS

Volts	AC Int.	DC or AC Cont.
12	1.42	.33
16	1.03	.22
24	.74	.17

7270

*ANSI/BHMA Type EO9321
for Mortise Latches without Deadbolt
By Others*

*Fire-Rated in Fail-Secure Mode
For Hollow Steel Jambs*



**UL Listed for
Burglary Resistance.
UL 10B for up to 3-hour
Fire Door Assemblies.**

▼ Case

Approx. 1" x 3-3/8" x 1-7/8" deep. Made of Zinc-aluminum alloy.

▼ Function

Remote electrical control of any door equipped with a Mortise Type latchset. Electrical actuation unlocks strike jaw, releasing latchbolt so door can be opened without operating latch itself. Extremely compact mechanism fits hollow jamb sections as shallow as 1-7/8".

▼ Strike Opening

3/4" x 1-7/16" x 5/8" deep. Bolt retainer jaw and strike lip are made of stainless steel. Strike accepts bolt of a variety of latchsets (or mortise panic exit devices) when it is centered on strike.

▼ Strike Lip

Basic 7270 strikes have lip of proper length for 1-3/4" thick door that closes flush with jamb edge.

▼ Faceplate

Measures 1-1/4" x 4-7/8". Faceplate is flat, with square corners.



ADAMS RITE
MANUFACTURING CO.

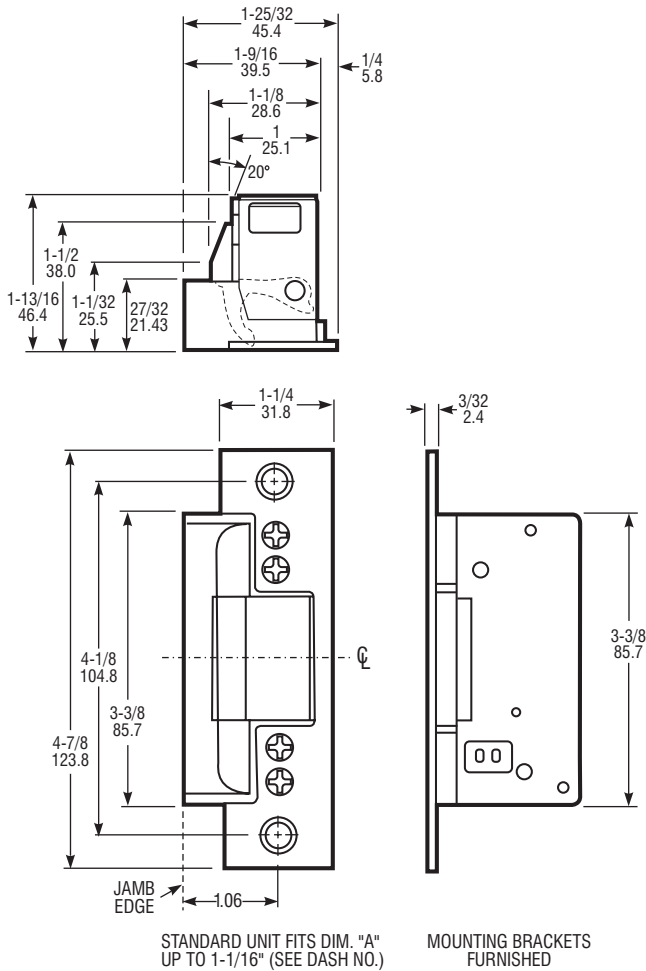
260 Santa Fe Street
Pomona, California 91767
(800) 872-3267 Fax: (800) 232-7329
www.adamsrite.com

7270 Electric Strike

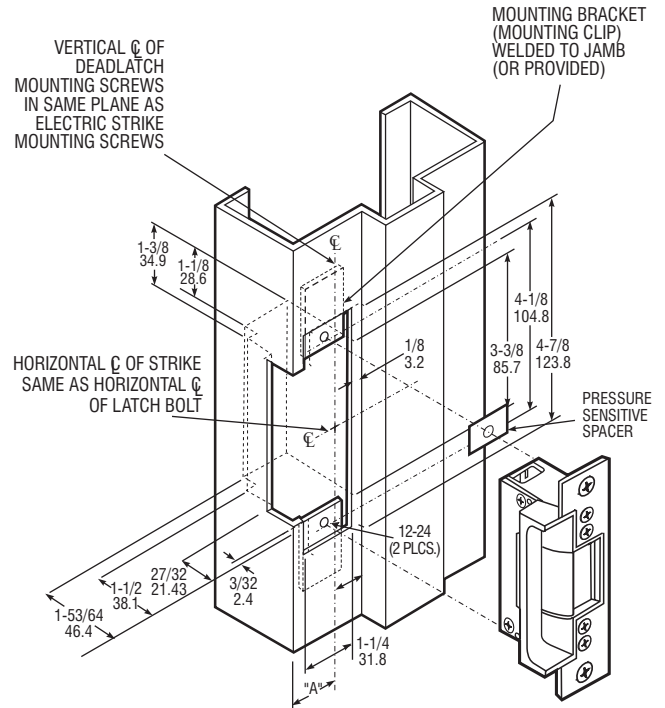
DIMENSIONS

INCHES
MILLIMETERS

Nominal, subject to tolerance extremes.



INSTALLATION



Installation In Steel Jamb

Turn strike upside down for opposite hand.

HOW TO ORDER

Specify quantity and the following information.
Order 4603 Rectifier and/or 4605 or 4606 Transformer separately.
(4603 included with AC Cont.)

Voltage	Current & Duty	Features
3 12 Volt	1 DC Continuous or Intermittent	0 Fail-Secure**
4 16 Volt	2 AC Continuous*	9 Monitor/Fail-Secure
5 24 Volt	4 AC Intermittent	

7270 - 310 - 630 - 50

Finish	Lip Extension (Dim."A") (Door Centerline to Jamb Edge for Interior Frames)
630 Satin Stainless	00 1.06 or less
	50 1.38"

*A DC strike with rectifier attached for use on AC current.
**Not available Fail-Safe.

STANDARD PACKAGE

Individually boxed with mounting screws. Includes mounting brackets and adhesive shims for use where welded tabs are omitted.

OPTIONS

Available with two monitoring signal switches which sense whether latch bolt is in strike and whether strike jaw is blocked. Choice of voltage in AC and DC for intermittent or continuous duty. Assembled for fail-secure (locked when unpowered) operation.

4603 Rectifier - Converts AC to DC, installs in low voltage line between transformer and strike. Rated 2 amps. (200 PIV).

4605 Transformer - Converts 120VAC to 24VAC. Rated 40 Volt-amp output assures plenty of power for strike release. Patented mounting bracket fits in knockout hole of standard junction boxes.

4606 Transformer - Plug-in version for standard wall outlet.
See separate specification sheet for more information on Strike options.