



American Dynamics

A Tyco International Company

Discover 200 Series Cameras

Bullet



Features That Make a Difference:

- High resolution 380 TVL camera
- Day/Night switching for low light conditions
- Complete with lens and universal mount
- Built-in IR illumination array
- IP66-rated housing for outdoor use
- Low power consumption
- Provided with a wall/ceiling mount fitted

The Discover 200 Series Bullet offers models to suit all applications and budgets. For businesses that are cost-sensitive, the 200 Series offers a powerful price/performance ratio.

All cameras in this series offer backlight compensation (BLC), automatic gain control (AGC), auto iris or auto electronic shutter, and automatic white balance.

The Discover 200 Series Bullets are an ideal choice for applications requiring high resolution images and accurate color rendition. Features include Day/Night switching with built-in IR illumination array. For settings with typical lighting such as daylight or lit indoor applications, this camera provides high resolution color images. When light

levels drop, the camera automatically turns on the built-in IR illuminators and switches from color to black and white to capture images in very low light.

These cameras are available in NTSC or PAL formats and are provided in IP66-rated housings to meet a variety of installation requirements. Extremely reliable, easy-to-install, and designed for use in a wide variety of applications, the Discover 200 bullet cameras are ideally suited for areas where high performance in a mixture of lighting conditions is required.

Specifications

Operational

Imager Interline transfer 1/3 inch CCD array
Video Output 1.0 Vp-p/75 ohm, composite
Horizontal Resolution 380 TVL
Active Pixel Count NTSC 510 x 492 pixels
Active Pixel Count PAL 500 x 582 pixels
Lens 6mm, F/2.0 fixed
Min. Scene Illumination 0.0 lux (F/2.0 lens, AGC on, IR on)
S/N Ratio 48 dB (AGC Off)
Synchronization Internal
IR Wavelength 850 nm
IR Distance Up to 25 m (80 ft)
Gain Control Auto¹
White Balance Auto (2,500°K to 9,500°K)
Electronic Shutter Auto (1/60 (1/50) ~ 1/100,000 sec.)
Backlight Compensation Auto
Day/Night Auto

Connectors

Input Power In-line socket
Composite Video BNC

Electrical

DC Voltage 12VDC ($\pm 10\%$)²
Power 4.5 Watts maximum

Mechanical

Dimensions (Diameter x H) 71 mm x 157 mm (2.80 in x 6.18 in)
Unit Weight 530g (1.16 lbs)
Construction Metal
Ingress protection IP66
Color Gray

Environmental

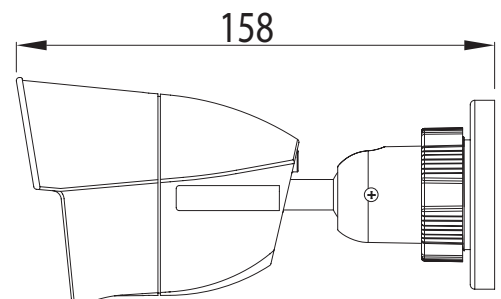
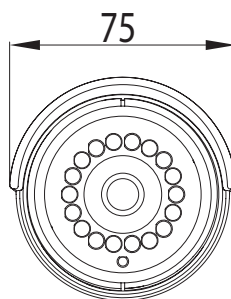
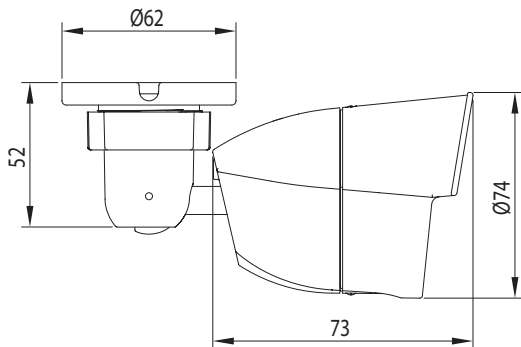
Operational Temperature -10°C to 50°C (14°F to 122°F)
Storage Temperature -20°C to 60°C (-4°F to 140°F)
Relative Humidity 90%
Ingress Protection IP66 (noncondensing)

Regulatory

Emissions FCC: Part 15, Class B
CE: EN61000, Class B
Immunity CE: EN50130-4
Safety NTSC: UL60950, CSAC22.2 No 60950
PAL: IEC60950

Ordering Information

Model Numbers	Description
ADCD200-B0001	bullet cam, 380TVL, 6mm, IR, 12VDC, NTSC
ADCD200-B0002	bullet cam, 380TVL, 6mm, IR, 12VDC, PAL



Accessories:

Power Supply: ADC1121A

- (1) SNR 45dB at this setting
(2) Regulated power supply required

Related Products



victor



DVRs



HDVR



TVR Series

Approvals



www.americandynamics.net

The trademarks, logos, and service marks displayed on this document are registered in the United States [or other countries]. Any misuse of the trademarks is strictly prohibited and Tyco International Ltd. will aggressively enforce its intellectual property rights to the fullest extent of the law, including pursuit of criminal prosecution wherever necessary. All trademarks not owned by Tyco International Ltd. are the property of their respective owners, and are used with permission or allowed under applicable laws.

Product offerings and specifications are subject to change without notice. Actual products may vary from photos. Not all products include all features. Availability varies by region; contact your sales representative.
© 2011 Tyco International Ltd. and its respective companies. All rights reserved. AD0175-DS-201010-R01-A4-EN