

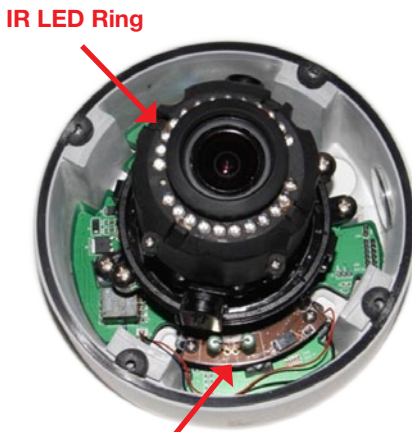
See Every Detail with Forensic Zooming



Arecont Vision MegaDome® and MegaDome® 2 megapixel cameras deliver outstanding resolution to capture every detail whether viewing live or recorded/archived video. With the ability to digitally Pan-Tilt-Zoom (PTZ) images, you can view the details you need to see at any time, such as license plates, faces and other objects of interest. The superior resolution of MegaDome® megapixel cameras along with their varying fields of view allows them to do the work of multiple conventional cameras and provide critical forensic information – all without the need and associated expense of system operators having to “catch” activities of interest as they occur.

Total PoE Solution

No external power is needed for both heater and IR LED ring.



2 Watt Heater

IR LED Key Specs

- Twenty-Four 850nm LEDs
- 20 Meter IR Distance (max)
- 40 Degree IR Angle
- MTBF: 82,442 Hours

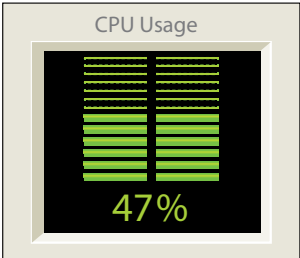
MegaDome® 2: Remote Zoom, Remote Focus and Auto-Iris

MegaDome® 2 series of all-in-one H.264 cameras combines megapixel resolution with remote focus, remote zoom, day/night and auto-iris capabilities. The cameras can be installed without locally adjusting the field of view or focus. All lens operations can be remotely controlled from the head end to refine the field of view and focus of the scene. Short or full range focus scan functions analyze the local or full scene to determine the best focus for the chosen field of view.

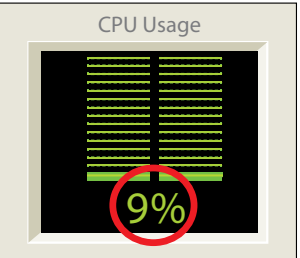
Compliant H.264 Compression

- Compliant implementation of H.264 allows full frame rates and full resolution without sacrificing image quality
- H.264 and MJPEG dual compression support with simultaneous streaming
- Decreases the CPU load both at the client (decompression) side and the server/storage side
- Lower bandwidth and storage relative to MJPEG
- Bitrate control to maintain desired bandwidth and storage size
- Real Time Streaming Protocol (RTSP) allows for compatibility with media players such as Apple QuickTime, VLC and others

H.264 Decompression (example)



2MP with live video in MJPEG



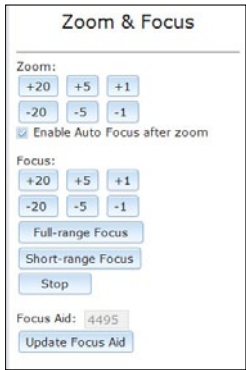
2MP with live video in H.264

User Friendly Web Interface

For easy installation, remote focus and remote zoom can be done through the camera webpage. Just click “short range focus” or “full range focus” to get a clear image through the IK10 rated dome bubble. The added DC auto-iris functionality provides better depth of field in varying lighting conditions.

Additional Benefits Include:

- Fine tuning for a better image after installation
- Quicker installation meaning less expensive total cost of ownership
- Ability to choose wide or telephoto field of view depending on application requirements
- Auto-iris is designed to provide the maximum depth of field in any lighting condition to ensure the best possible image quality

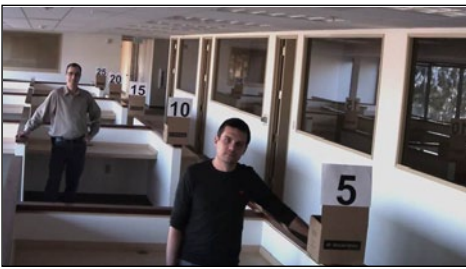


Wide Field of View



Telephoto Field of View

Enhanced Low Light Performance



As part of their superior Day/Night operation, MegaDome® 2 cameras include low light enhancing technology such as binning and adaptive noise-cancellation.

This functionality along with integrated IR illumination provides a winning combination in complete darkness.

H.264 MegaDome® Series

Model	Resolution		Min Illumination	Max Frame Rate	H.264/MJPEG	Color Only	Day/Night	Heater Option
AV1355	1.3MP	1280x1024	0.1 Lux	32fps	•	•		•
AV1355DN	1.3MP	1280x1024	0 Lux, IR	32fps	•		•	•
AV2155	2MP	1600x1200	0.1 Lux	24fps	•	•		•
AV2155DN	2MP	1600x1200	0 Lux, IR	24fps	•		•	•
AV3155	3MP	2048x1536	0.2 Lux	15fps	•	•		•
AV3155DN	3MP	2048x1536	0 Lux, IR	15fps	•		•	•
AV5155	5MP	2592x1944	0.3 Lux	9fps	•	•		•
AV5155DN	5MP	2592x1944	0 Lux, IR	9fps	•		•	•

Features at a Glance

H.264 MegaDome® Series

- 1.3, 3, 5 Megapixel and Full HD 1080p
- All-in-One Solution
- H.264/MJPEG
- 32fps@1.3MP, 24fps@1080p, 15fps@3MP, 9fps@5MP
- Color and Day/Night Versions
- Multi-Streaming: Up to 8 Concurrent Non-Identical Streams
- Bitrate Control
- Superior Low Light Performance

H.264 MegaDome® 2 Series

Model	Resolution		Min Illumination	Max Frame Rate	Day/Night	Remote Zoom Remote Focus	Auto-Iris	IR	Heater Option
AV1255AM	1.3MP	1280x1024	0.1 Lux	42fps	•	•	•		•
AV1255AMIR	1.3MP	1280x1024	0.1 Lux	42fps	•	•	•	•	•
AV2255AM	1080p	1280x1024	0.1 Lux	32fps	•	•	•		•
AV2255AMIR	1080p	1280x1024	0.1 Lux	32fps	•	•	•	•	•
AV3255AM	3MP	2048x1536	0.3 Lux Binned 0.15 Lux	21fps	•	•	•		•
AV3255AMIR	3MP	2048x1536	0.3 Lux Binned 0.15 Lux	21fps	•	•	•	•	•
AV5255AM	5MP	2592x1944	0.3 Lux Binned 0.15 Lux	14fps	•	•	•		•
AV5255AMIR	5MP	2592x1944	0.3 Lux Binned 0.15 Lux	14fps	•	•	•	•	•
AV10255AM	10MP	3648x2752	0.42 Lux Binned 0.21 lux	7fps	•	•	•		•
AV10255AMIR	10MP	3648x2752	0.42 Lux Binned 0.21 lux	7fps	•	•	•	•	•

Features at a Glance

H.264 MegaDome® 2 Series

- 1.3, 3, 5, 10MP & Full HD 1080p
- H.264/MJPEG
- 42fps@1.3MP, 32fps@1080p, 21fps@3MP, 14fps@5MP, 7fps@10MP
- Day/Night, Remote Focus, Remote Zoom and Auto-Iris
- Total PoE Solution including Heater
- Integrated IR Illuminator (IR Version Only)
- Audio & SD Card (Future Option)
- Outdoor, IP66 Vandal Resistant IK10 Rated Dome
- Binning Mode on 3, 5 and 10MP
- Privacy Masking, 1024 Zone Motion Detection, CasinoMode™

Accessories®



MD-WMT2 Wall Mount (1.5NPT Standard)



SV-JBA Junction Box Adapter



MD-FMA Flush Mount Adapter



MD-CRMA



MD-PMA



MD2-HK (for MD2) 2 Watt Heater



MV-EBA Electrical Box Adapter



MD-CMT Pendant Mount



MD-JBA (For MD-CMT Only)



MD-EMA







### The All-in-One Solution – MegaDome® & MegaDome® 2

Arecont Vision pioneered the implementation of H.264 (MPEG-4, Part 10) compression in the security industry for high-definition and high multi-megapixel image resolution camera solutions. The MegaDome® Series is an all-in-one solution available in 1.3, 1080p, 3 and 5 megapixels and in color and Day/Night configurations. The MegaDome® 2 series combines megapixel resolution from 1.3 to 10MP, with remote focus, remote zoom, day/night and auto-iris capabilities.

#### Highlighted Features:

- World's First Full Line of H.264 Megapixel Cameras
- Remote Focus, Remote Zoom and Auto-Iris (MegaDome® 2)
- H.264 (MPEG-4, Part 10) Compression Standard
- Superior Image Quality and Low Light Performance
- Fastest Megapixel Image Frame Rate
- Unparalleled High-Definition Resolution
- IP66 & IK10 Rated Dome Enclosure
- CE, FCC, UL Listed, RoHS Regulatory Approvals
- Cost Efficiency

### Corporate Headquarters

Arecont Vision  
425 East Colorado Street, 7th Floor  
Glendale, CA 91205  
+1 (818) 937-0700  
www.arecontvision.com



### Global Sales Team

#### North America:

avsales@arecontvision.com

#### Latin America:

latam.sales@arecontvision.com

#### Asia Pacific:

Asia Pacific:  
apac.sales@arecontvision.com

Australia / New Zealand:  
anz.sales@arecontvision.com

China:  
china.sales@arecontvision.com

Malaysia, Indonesia, Vietnam,  
Philippines, Singapore, Thailand:  
seasia.sales@arecontvision.com

Taiwan, Korea, Japan, Hong Kong, Mongolia:  
eastasia.sales@arecontvision.com

#### Europe:

Europe:  
europe.sales@arecontvision.com

Belgium, Netherlands, Luxemburg:  
benelux.sales@arecontvision.com

Denmark, Finland, Iceland, Norway, Sweden:  
nordic.sales@arecontvision.com

Eastern Europe:  
easterneurope.sales@arecontvision.com

France:  
france.sales@arecontvision.com

Germany, Austria, Switzerland:  
dach.sales@arecontvision.com

Italy:  
italy.sales@arecontvision.com

Russia:  
russia.sales@arecontvision.com

Spain and Portugal:  
iberia.sales@arecontvision.com

United Kingdom  
uk.sales@arecontvision.com

#### Middle East / Africa :

Israel:  
israel.sales@arecontvision.com

Middle East / North Africa:  
mena.sales@arecontvision.com

Central & South Africa:  
africa.sales@arecontvision.com



Arecont Vision is the leading manufacturer of high-performance megapixel IP cameras and associated software. All Arecont Vision products are made in the USA.



**Arecont Vision**  
megapixel technology...  
**beyond imagination**  
www.arecontvision.com • 1-877-CAMERA-8



## H.264 MegaDome® & MegaDome® 2 Megapixel IP Cameras

**Arecont Vision**  
megapixel technology...  
**beyond imagination**