

### Specifications:

- E.I.A. standard 19" wide opening, front, rear, top and bottom.
- 35" (20U), 70" (40U), or 78.75" (45U) of vertical rack mount space.
- Rack mount opening on the top and bottom.
- Fully welded 16 Gauge steel construction.
- 12 Gauge adjustable rack rail in front and rear.
- Rack rail threaded 10-32, with numbered increments stamped into rail.
- Racks can be joined after installation of electronics.
- Dual NEMA conduit knockouts in top and bottom of rear frame.
- Black textured powder coat enamel finish.
- Shipping classification: 150.
- Ten year manufacturer warranty.
- Dimensions shown have a +/- 0.062" tolerance.



90012\_050205jw

#### 1. GENERAL DESCRIPTION

- A. The contractor shall supply a system of vertical racks capable of supporting specified electronics.
- B. Racks supplied shall be able to be ganged. Additional cabinets can be added to existing rack systems, without removal of any electronics.
- C. Side components shall offer ventilation. The bottom shall be open with closure panel available.
- D. Rack rails shall be tapped 10-32 and fully adjustable front to back.
- E. Model options shall include those that are welded and shipped as an assembled unit.

#### 2. STANDARDS

The system shall comply with Electronic Industry Association (E.I.A.) specifications for rack mounting ANSI/EIA standard RS-310.

#### 3. DRAWINGS

The specification of sizes and dimensions shown in the drawings shall have a tolerance of not more than +/- 0.062" (1.6mm).

#### 4. FINISH AND COLOR

All exterior and frame steel components shall have a zinc oxide wash primer then painted with textured powder enamel.

#### 5. OPTIONAL ACCESSORIES

A full range of optional accessories are available including but not limited to: caster kit, electrical outlet supply, shelf support brackets, stationary shelves, pullout shelves, rack slide kits, drawers, blowers and cooling fans, grounding and lacing bars.

#### 6. MOUNTING HARDWARE

Mounting hardware for the specified electronics shall be available upon request. Any hardware needed for assembly shall be provided. Panel bolts, washers, and clips with captive nuts suitable for use with E.I.A. standard punched rack rails shall be included where appropriate. Slide kits, where appropriate (including drawers) shall be of ball bearing operation. Friction or roller type slides are not acceptable.

#### 7. INSTRUCTIONS

Fully detailed assembly instructions in the English language shall be supplied with both written and pictorial descriptions for each item/model numbered component.

#### 8. PACKAGING

Each component part number shall be independently marked and packed into double or triple ply corrugated outer cartons and shall be suitable for storage and shipping to site without damage.

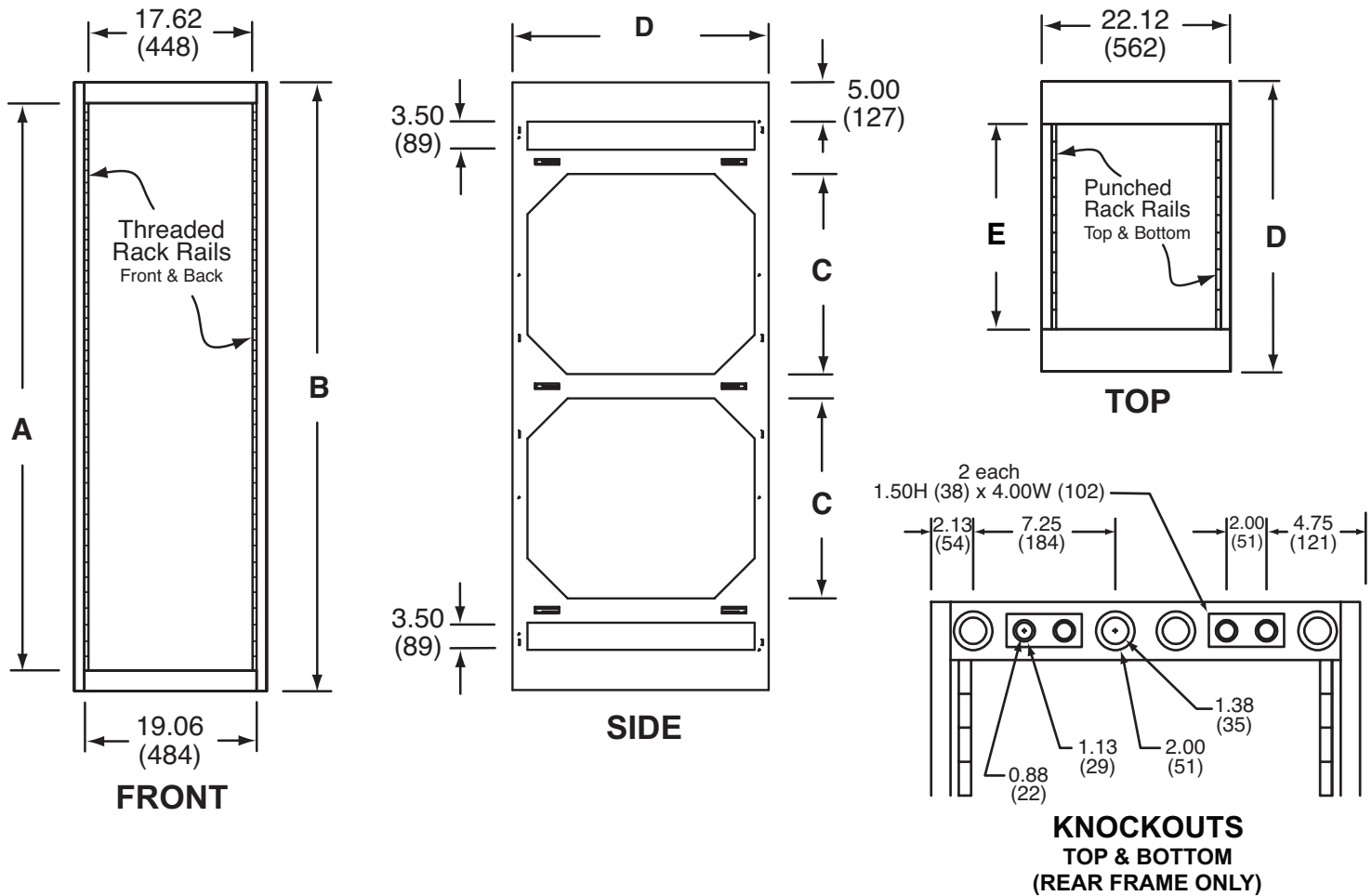
#### 9. WARRANTY

The manufacturer shall provide a written ten-year guarantee against defects of all component parts, material and workmanship under normal use.

#### 10. WELDED PRE-ENGINEERED CONSTRUCTION

- A. All components within each rack cabinet shall be:

1. Of pre-engineered construction, i.e.: constructed from a series of independent components.
2. Available from a pre-defined manufacturer's model number representing a complete cabinet.
3. In common production for at least two years prior to the date of submission.
4. Free from alterations to the installed cabinet or series of cabinets, will be accomplished without the need for either welding or carpentry work.
5. Capable of cables or conduits passing through a series of connected vertical cabinets without obstruction.
6. Capable of supporting E.I.A. standard 19" (483mm) width rack mounted equipment.
7. Constructed of 16 gauge (.059") skins with three 16 gauge (.059") horizontal struts welded front to back for rack rail support.
8. Constructed of 12 gauge (.104") steel outer rack rails.
9. Of standard vented or solid blank panel and shall be determined by the contractor and included to cover areas not filled in with specified equipment. These panels shall be measured in standard rack unit multiples and available with standard part numbers for future changes to the system.



MODEL	A	B	C	D	E
90012	35.00 (20U)	42.00 (1069)	18.00 (457)	24.00 (610)	10.50 (6U)
90016	70.00 (40U)	77.00 (1956)	25.00 (635)	24.00 (610)	10.50 (6U)
90018	78.75 (45U)	85.00 (2159)	29.38 (746)	24.00 (610)	10.50 (6U)
90022	35.00 (20U)	42.00 (1069)	18.00 (457)	32.00 (813)	19.25 (11U)
90026	70.00 (40U)	77.00 (1956)	25.00 (635)	32.00 (813)	19.25 (11U)
90028	78.75 (45U)	85.00 (2159)	29.38 (746)	32.00 (813)	19.25 (11U)
90032	35.00 (20U)	42.00 (1069)	18.00 (457)	38.38 (975)	24.50 (14U)
90036	70.00 (40U)	77.00 (1956)	25.00 (635)	38.38 (975)	24.50 (14U)
90038	78.75 (45U)	85.00 (2159)	29.38 (746)	38.38 (975)	24.50 (14U)

