

VALUE LINE

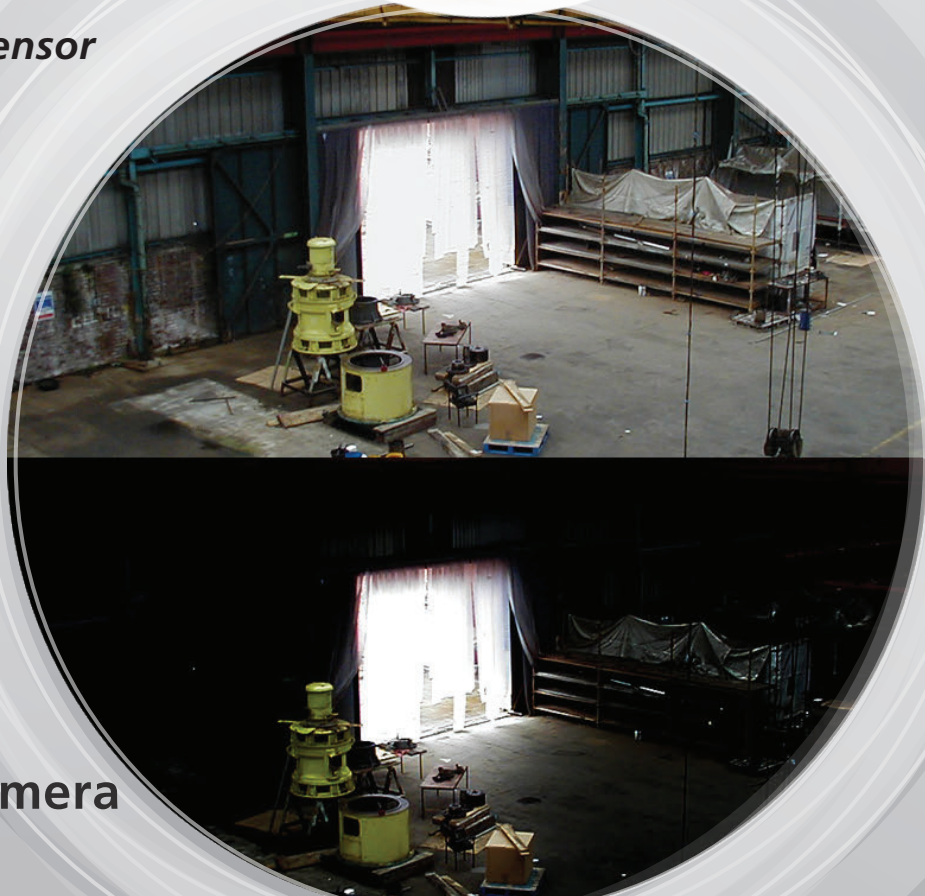


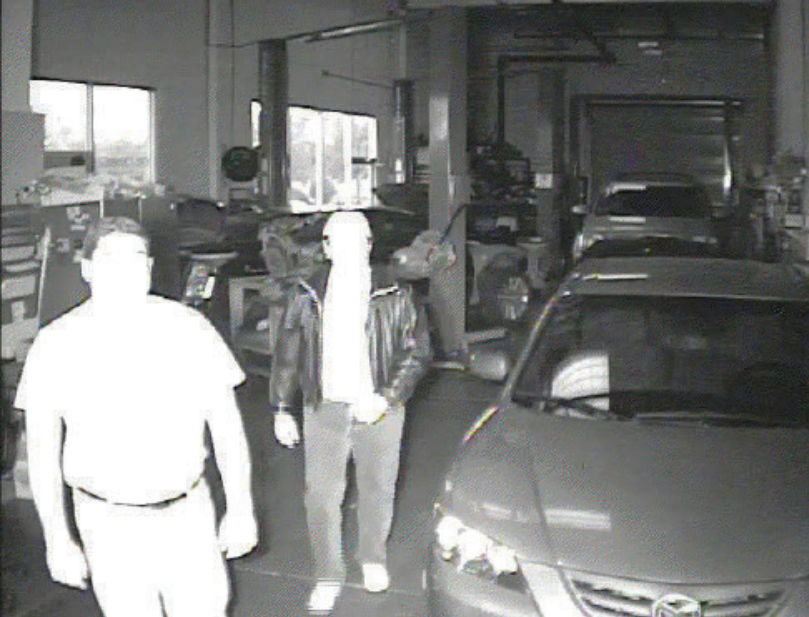
PIXIM[®]

- *1/3" PIXIM Nightwolf CMOS Sensor*
- *690 Effective TV Lines*
- *IP 66 Certified (Weather Proof)*
- *Powerful Wide Dynamic Range*

DWC-V365
DWC-V365TIR

PIXIM'S Value Digital Pixel Camera





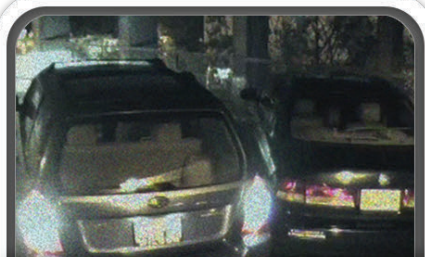
PIXIM Nightwolf Sensor

The Nightwolf technology eliminates hot spots common to IR cameras with near-field reflective objects in the scene and correctly exposes highlights as well as darker background details simultaneously.



Smart DNR (Digital Noise Reduction)

Smart DNR produces less noise and more color at night without image lagging.



Powerful WDR (Overexposure Elimination)

Eliminates overexposure to capture all the details of the scene.



Powerful WDR (Underexposure Elimination)

Eliminates underexposure to capture all the details of the scene.



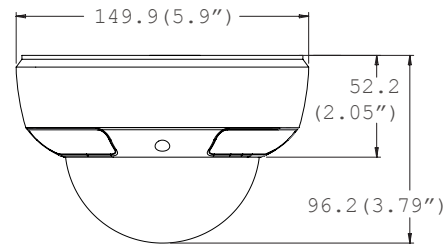
IP 66 Certified

IP66 certified enclosure guarantees total protection against dirt particles, fog, or condensation.





Dimensions (unit : mm)



Summary

The Nightwolf Indoor Dome Camera V365 is a high performance camera with an affordable price. With its innovative features and sleek attractive design, the camera is ideal for a wide range of security applications. The camera offers exceptional Wide Dynamic Range, sensitivity to harsh lighting, as well as high resolution imaging with its 1/3" PIXIM Nightwolf CMOS Sensor. PIXIM's technology allows each pixel to self-adjust in the same scene, giving terrific image quality. PIXIM revolutionizes the way video cameras capture and process images. All the camera's functions can be easily programmed with its built-in joystick and on-screen display.

Features

- 1/3" PIXIM Nightwolf CMOS Sensor
- 690 Horizontal TV Lines
- 2.8~11mm Varifocal Auto Iris Lens
- Electronic Day & Night
- 3D DNR (Digital Noise Reduction)
- Powerful Wide Dynamic Range
- AGC (Auto Gain Control)
- BLC (Back Light Compensation)
- Star-Light (Super Low Light Technology)
- 8X Digital Zoom
- Ultra Low Light Sensitivity
- Smear Cancellation
- Mirror & Image Flip
- IP66 Certified (Weatherproof)
- Programmable Privacy Zones (6) & Motion Detection
- Easy Icon Driven OSD Menu with Built-in Joystick
- Auto Sensing 24VAC/12VDC with Line Lock
- Secondary Video-BNC Output
- Video Test Output Included

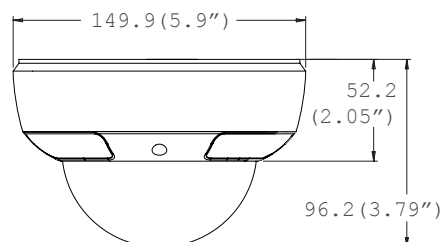
Specifications

VIDEO	
Image Sensor	1/3" PIXIM Nightwolf CMOS Sensor
Total Pixels	768 (H) x 548 (V)
Scanning System	525 Lines, 2 : 1 Interlace
Frequency	15.734KHz (H), 59.95Hz (V)
Synchronization	Internal / Line Lock
Horizontal Resolution	690 Effective Horizontal TV Lines
Minimum Illumination	F1.2 (30IRE): 0.22Lux [Color] F1.2 (30IRE): 0.08 Lux [B&W]
S/N Ratio	53dB (AGC off)
Video Output	CVBS: 1.0Vp-p / 75 Ω
LENS	
Focal Length	2.8-11mm
Lens Type	DC Auto Iris
OPERATIONAL	
Lens	MANUAL / DC
AE Preference	OUTDOOR / INDOOR
Back Light Compensation	OFF/ ON
Wide Dynamic Range	LOW / NORMAL / MEDIUM / HIGH / CUSTOM
Auto Gain Control	LOW / MEDIUM / HIGH
Star-Light	OFF, x2-30FPS ~ x64
White Balance Mode	ATW/ PUSHLOCK / MANUAL / AWC/ NORMAL
Day & Night	AUTO / COLOR / B&W
Mirror	OFF / MIRROR / V-FLIP / ROTATE
Sharpness	-8 ~ 8
Gamma	25 (0.25)~ 100 (1.0)
3D Digital Noise Reduction	OFF/ LOW/ MEDIUM/ HIGH
Digital Zoom	x1 ~ x8
Privacy Zones	OFF / ON (6 Programmable Zones)
Baudrate	2400 ~ 38500
Protocol	PELCO-D
Language	ENGLISH, DEUTSCH, FRANCAIS, ITALIAN, ESPAÑOL, DUTCH
ENVIRONMENTAL	
Operating Temperature	-10°C ~ 55°C (14°F ~ 131°F)
Operating Humidity	Less than 90% (Non-Condensing)
Storage Temperature	-20°C ~ 70°C (-4°F ~ 158°F)
IP Rating	IP66 (Protects against dust and high pressure water.)
ELECTRICAL	
Power Requirement	Dual (DC12V & AC24V)
Power Consumption	DC12V: 2.46W, 198mA AC24V: 3.0W, 146mA
MECHANICAL	
Housing Material	Aluminum Housing
Dome Cover Material	Polycarbonate
Dimensions	ø149.9 X 96.2 mm (ø5.9 X 3.79 in)
Weight	2.05 lbs

*Specification is subject to change without prior notice.



Dimensions (unit : mm)



Summary

The Nightwolf Outdoor Dome Camera V365TIR is a high performance camera with an affordable price. The camera has a varifocal lens, 85ft Range IR, and powerful features like exceptional Wide Dynamic Range, sensitivity to harsh lighting, as well as high resolution imaging with its 1/3" PIXIM Nightwolf CMOS Sensor. PIXIM's technology allows each pixel to self-adjust in the same scene, giving terrific image quality. PIXIM revolutionizes the way video cameras capture and process images. All the camera's functions can be easily programmed with its built-in joystick and on-screen display.

Features

- 1/3" PIXIM Nightwolf CMOS Sensor
- 690 Horizontal TV Lines
- 2.8~11mm Varifocal Auto Iris Lens
- 85ft Range IR with Intelligent Camera Sync
- TDN (True Day and Night / IR Cut Filter)
- 3D DNR (Digital Noise Reduction)
- Powerful Wide Dynamic Range
- AGC (Auto Gain Control)
- BLC (Back Light Compensation)
- Star-Light (Super Low Light Technology)
- 8X Digital Zoom
- Ultra Low Light Sensitivity
- Smear Cancellation
- Mirror & Image Flip
- IP66 Certified (Weatherproof)
- Programmable Privacy Zones (6) & Motion Detection
- Easy Icon Driven OSD Menu with Built-in Joystick
- Auto Sensing 24VAC/12VDC with Line Lock
- Secondary Video-BNC Output
- Video Test Output Included

Specifications

VIDEO	
Image Sensor	1/3" PIXIM Nightwolf CMOS Sensor
Total Pixels	768 (H) x 548 (V)
Scanning System	525 Lines, 2 : 1 Interlace
Frequency	15.734KHz (H), 59.95Hz (V)
Synchronization	Internal / Line Lock
Horizontal Resolution	690 Effective Horizontal TV Lines
Minimum Illumination	F1.2 (30IRE): 0 Lux [Color] F1.2 (30IRE): 0 Lux [B&W]
S/N Ratio	53dB (AGC off)
Video Output	CVBS: 1.0Vp-p / 75 Ω
LENS	
Focal Length	2.8-11mm
Lens Type	DC Auto Iris
IR Distance	85ft Range IR
OPERATIONAL	
Lens	MANUAL / DC
AE Preference	OUTDOOR / INDOOR
Back Light Compensation	OFF / ON
Wide Dynamic Range	LOW / NORMAL / MEDIUM / HIGH / CUSTOM
Auto Gain Control	LOW / MEDIUM / HIGH
Star-Light	OFF, x2-30FPS ~ x64
White Balance Mode	ATW/ PUSHLOK/ MANUAL / AWC/ NORMAL
Day & Night	AUTO / COLOR / B&W
Mirror	OFF / MIRROR / V-FLIP / ROTATE
Sharpness	-8 ~ 8
Gamma	25 (0.25) ~ 100 (1.0)
3D Digital Noise Reduction	OFF / LOW / MEDIUM / HIGH
Digital Zoom	x1 ~ x8
Privacy Zones	OFF / ON (6 Programmable Zones)
Baudrate	2400 ~ 38500
Protocol	PELCO-D
Language	ENGLISH, DEUTSCH, FRANCAIS, ITALIAN, ESPAÑOL, DUTCH
ENVIRONMENTAL	
Operating Temperature	-10°C ~ 55°C (14°F ~ 131°F)
Operating Humidity	Less than 90% (Non-Condensing)
Storage Temperature	-20°C ~ 70°C (-4°F ~ 158°F)
IP Rating	IP66 (Protects against dust and high pressure water.)
ELECTRICAL	
Power Requirement	Dual (DC12V & AC24V)
Power Consumption	DC12V: 2.46W, 198mA / 5.6W, 443mA (LED On) AC24V: 3.0W, 146mA / 5.4W, 272mA (LED On)
MECHANICAL	
Housing Material	Aluminum Housing
Dome Cover Material	Polycarbonate
Dimensions	ø149.9 X 96.2 mm (ø5.9 X 3.79 in)
Weight	2.05 lbs

*Specification is subject to change without prior notice.