

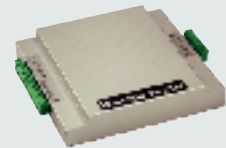
### Technical Specifications

Models	GV-250□	GV-600□	GV-650□	GV-800□	GV-900□	GV-1000
Video Inputs	2~16□	4~16□	4~16□	4~16□	8,16□	16
Audio Inputs	1 channel□	1 channel□	2 channels□	4 channels□	4 channels□	Require GV-A16
Recording Speed	20 fps NTSC□ 15 fps PAL□	30 fps NTSC□ 25 fps PAL□	60 fps NTSC□ 50 fps PAL□	120 fps NTSC□ 100 fps PAL□	240 fps NTSC□ 200 fps PAL□	480 fps NTSC 400 fps PAL
Video Compression	Wavelet, MPEG-4, GeoMPEG-4					
Compression Rate	Variable, 300:1 maximum					
Video Resolution	320x240, 640x240, 640x480, 640x480SW					
Video Signal Types	NTSC, PAL					
Networking	TCP/IP, LAN, WAN, Internet, Modem Dial-up, Modem-to-Modem, ISDN					
Backup Devices	HDD, Network HDD, CD/RW, DVD/R, ZIP, JAZ.					
PTZ Control Protocol Support	Ademco Jupiter, Canon VC-C3/VC-C4, DiGiDome DOH-240, DynaColor D-7720/7722, Kalatel CyberDome, Lulin PIH, Panasonic WV-CS850/854, Pelco Spectra D-protocol/P-protocol, Samsung SCC-641/643, Samsung SPD-1600, Sensormatic Ultra IV, Sony DVI-D100					
Operating System	Windows 2000, XP, Server 2003					
Language Support	English, German, French, Spanish, Portuguese, Japanese Simplified Chinese, Traditional Chinese, Russian, Polish					



#### GV-NET

Specification	
Communication	1200~19200 bps
DC In	Power Adaptor DC 5V
Dimension (mm)	103 (W) X 32 (H) X 64 (D)



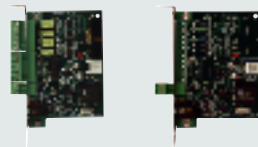
#### GV-RELAY

Specification	
Relay Output	8
Relay Status	Normal Open
Power Consumption	5VDC, 350mA (MAX)
Relay On Time	8 ms
Relay Off Time	5 ms
Dimension (mm)	202 (W) x 39 (H) x 166 (D)



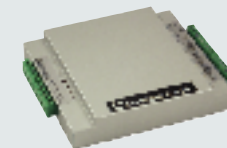
#### IR REMOTE CONTROL

Specification	
Operation Distance	7 meters
Receiving Angle	± 30 degrees
Frequency	38 KHz
Power	R03 size AAA/1.5V Battery x 2 units (Remote Control)
Dimension (mm)	53 (W) x 28 (H) x 185 (D) (Remote Control)



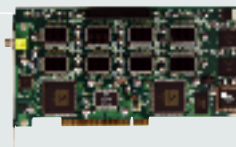
#### GV-NET/IO Card GV-NET Card (without IO function)

Specification	
Communication	1200~19200 bps
Relay Output	4, off time 4ms
Input	4
DC-IN	DC 5V, 1A



#### GV-IO

Specification	
Communication	RS-485, 2400~9600
Output	Output: 16
Input	Input: 8 Input Signal: 0-5V DC High State: 5V Low State: 0V
Dimension (mm)	202(W) x 39 (H) x 166 (D)



#### GV-DSP Real-time Display Card

Specification	
Display Rate	240fps, 480fps
Input	8, 16 channels
Output	TV-Out x 1



#### GV-DATA CAPTURE

Specification	
Input	RS-232 from POS DB9 female Parallel port from POS DB25 male
Output	RS-232 to printer DB9 male Parallel port to printer DB25 female RS-232 to DVR DB9 female RS485+ Connect to GV-NET RS485+ RS485- Connect to GV-NET RS485-
Dimension (mm)	163(W) x 118(H) x 30 (D)



## GV-Series Surveillance System

- All-in-one surveillance solution
- Live monitoring via internet browser
- Mobile surveillance by PDA and i-Mode
- Versatile MPEG4 / Wavelet compression
- Easy integration of external alarms and sensors
- POS integration



# GV-Series Surveillance System

## V6.1 NEW FEATURES

- Unattended and missing object detection: highlight the locations and send out alerts
- Windows Lockup: Launch GV-desktop to lock up the Windows
- SMS alerts available in Main System, Center V2 and Vital Sign Monitor
- Support 1,000 accounts for logins and passwords
- Alarm on objects that pass between predefined regions
- Object tracking and zooming by PTZ domes
- Object index for a quick search in ViewLog
- E-Map with an ease of use interface
- Synchronized audio and video
- Export a video footage within a specified period of time
- Support resolution of 640 x 240 on WebCam
- Record live videos on WebCam Multiview
- Multiple host connections in Webcam Multiview: support multiple cameras from different hosts
- Center V2 Pro supports up to 50 subscribers and 800 channels
- Activate alarms, module outputs, and SMS from Center V2
- Dispatch server services up to 25,000 subscribers
- Vital Sign Monitor (VSM) monitors unusual status of multiple surveillance sites (optional)

## KEY FEATURES PRIOR TO V6.0

- Object Counting allows users to count the number of objects that pass between predefined regions
- View screen pop-ups on motion or alarm activation
- "Keep Days" allows users to keep video files for a selectable number of days
- Pre-motion and post-motion recording
- Password protection allows authorized users only to define user preferences
- Digital watermark on AVI files for video authentication

## NEW ACCESSORIES (optional)

- IR Remote Control
- GV-12 In (extension card for GV-Net/IO card)
- GV-12 Out (extension card for GV-Net/IO card)
- GV-Data Capture (for POS integration use only)

## MONITOR VIEWING

- Dual display operation for live monitoring and ViewLog playbacks on two monitors
- Full screen view

## AUDIO

- Support up to 16 channels of live audio streaming (optional)
- Real-time record 16 channels of audio (optional with GV-A16)

## RECORDING

- Choice of recording at 25,30,60,120,240,480 fps
- Choice of recording includes round-the-clock, motion detection, alarm triggers and schedule mode
- Adjustable recording quality and frame rate by each camera

## POS INTEGRATION (GV-Data Capture required)

- POS video text overlay, displaying text messages onto live monitoring screen and video files
- Compatible with up to 4 POS devices and 4 cameras
- POS Field Filter displays transaction events filtered by defined conditions
- POS event search by transaction keyword and transaction type (eg. void)
- Activates recording when transaction starts
- Transaction data is stored in a database file (Microsoft Access format) on GV-DVR system, applicable to retroactive analysis or reports
- Adjustable on-screen font type, text color, text background color and text alignment

## SEARCH & PLAYBACK

- Object Search allows users to search specific objects or motion changes within a defined area in a video footage
- Use Index Search to search and playback videos by motion/alarm triggers, and POS transaction events
- Use thumbnail browse mode for your ease of search for specific frames within a video footage

## NOTIFICATION

- E-mail notification with video images (in attachment) on motion and alarm activation
- E-mail or telephone notification on video lost or I/O error
- Direct PTZ dome to preset location on motion and alarm activation

## WEBCAM

- 1, 2, 4, 8, and 16 screen divisions
- Full screen view
- User definable Bandwidth Control ensures image transmission does not exceed allocated bandwidth
- Full control of PTZ domes and I/O devices from a remote location
- Dynamic IP server support
- Locate video server by domain name
- Quick links to GV-Systems through bookmark
- Two-way audio communication with GV-System (receiving and broadcasting)

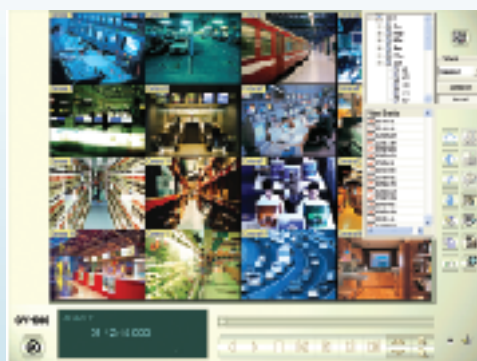
## REMOTE PLAYBACK

- Remote access to video and audio files
- Simultaneously remote playback 32 channels of videos
- Address book allows users to create shortcuts to frequently used system operations
- Locate files by specific date, time, or camera
- Advanced search function by time frame and range of selected camera
- Data transmission bandwidth control

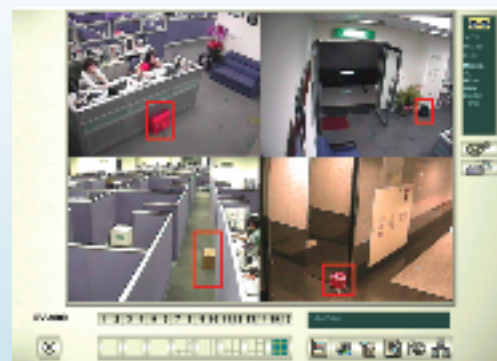
## CENTER V2

Create a Central Monitoring Station with Center V2! Effectively reduce false alarms! With videos (live or attachment mode) transmitted instantly from surveillance site to Center V2, you can verify nature of the alarm, and get those video footages to the proper authorities for optimum action - in a matter of minutes.

- Instant video attachment to Center V2 on motion, alarm, and panic button activation
- 15, 24, 25, and 36 screen (in 2 pages) divisions
- Two-way audio communication (receiving and broadcasting)
- Dual view supported; allows live video and event list to be viewed in separate monitors
- Keeps track of server activities, including motion event, alarm event, subscriber login/logout, and connection status



ViewLog



Unattended/ Missing Object Detection



E-map



WebCam Multiview



Center V2