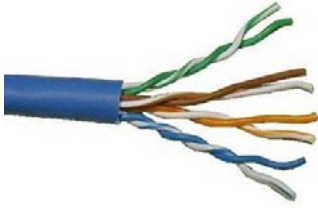


## Technical Data Sheet- Category 5E Network Plenum

# WEST PENN WIRE



2833 West Chestnut Street  
Washington, PA 15301  
Toll Free: (800) 245-4964  
Fax: (724) 222-6420  
[www.westpenn-wpw.com](http://www.westpenn-wpw.com)

<b>PART NUMBER:</b>	<b>254245</b>
<b>DESCRIPTION:</b>	24 AWG.- 4 PAIR Solid bare copper conductors, unshielded with an overall plenum jacket.
<b>NEC RATING:</b>	CMP
<b>APPROVALS:</b>	(UL) C(UL) Listed or c(ETL)us Listed
<b>APPLICATION:</b>	Indoor Plenum- Category 5E Applications- Ethernet, IP Cameras, Digital Integration

### Construction Parameters:

Conductor	24 AWG Bare Copper
Stranding	Solid
Number of Conductors	8 (4 Pair)
Insulation	Dual Insulation FEP - .008"
Shield	None
Drain	None
Jacket Material	Plenum PVC
Overall Cable Diameter	0.190" Nom.
Approximate Cable Weight	25 Lbs/1M' Nom.
Flame Rating	NFPA 262

### Electrical & Environmental Properties:

Operating Temperature Rating	-20°C To +60°C
Operating Voltage Rating	300 V RMS
DC Resistance per Conductor @ 20deg C	9.38 Ohms/100m Nom.
Mutual Capacitance	14pf/ft Nominal
Nominal Impedance	100 Ohms+/-15% (1-100Mhz)
Velocity of Propagation	66% Nominal
Delay Skew	45ns/100m MAX
Standards	TIA/EIA568-B.2
Insulation Colors	1.Blue/White-Blue, 2. Orange/White-Orange 3. Green/White-Green, 4. Brown/White-Brown
Jacket Color	Gray, White, Blue- Other Colors Available Example: 254245-WH
RoHS Compliant	Yes

## Electrical Specifications:

Frequency: MHz	1	10	25	100	200
Insertion Loss: dB/100m	1.8	5.8	9.3	19.6	28.8
NEXT: dB/100m	80	64	59	50	46
ACR: dB/100m	70.3	50.9	41.1	40.3	35.8
PS-NEXT: dB/100m	73	58	52	43	40
PS-ACR: dB/100m	66.3	46.9	37.1	17.3	3.3
ELFEXT: dB/100m	67.8	47.8	39.8	27.8	21.8
PS-ELFEXT: dB/100m	64.8	25	36.8	24.8	18.8
RL: dB	20	25	24.3	20.1	18

## Mechanical Properties:

Max. Recommended Pull Tension

25 lbs.

Min. Bend Radius (Install)

1 " Min.

## Accessories:

### Connectors: Jacks

AX101310	Black
AX101315	Blue
AX101314	Green
AX101312	Red
AX101313	Yellow
AX101309	White
AX101311	Orange
AX101308	Ivory

### Connectors: Plugs

32-2198UL	2 pc. Plug
32-EZP	Cat 5E EZ RJ45

### Tools:

TL-135	110 Punch down tool
TL-EZRJ45	EZ Crimp Tool
TL-114	Crimp Tool for 32-2198UL

### Cable Assemblies:

WP66xx-3	3ft- Replace xx- 70(Gray), 72(Blue), 74(Red)
WP66xx-7	7ft- Replace xx- 70(Gray), 72(Blue), 74(Red)
WP66xx-10	10ft- Replace xx- 70(Gray), 72(Blue), 74(Red)
WP66xx-15	15ft- Replace xx- 70(Gray), 72(Blue), 74(Red)
WP66xx-25	25ft- Replace xx- 70(Gray), 72(Blue), 74(Red)

Specification Issue Date: 4/09

This document is the property of West Penn Wire.  
The information contained herein is considered  
Proprietary and not to be reproduced by any means  
Without written consent of West Penn Wire

Standard Lengths are 1000ft.  
The Jacket is sequentially footmarked.  
The information presented here is, to the best of our  
knowledge, is true and accurate. However, since  
conditions of use are beyond our control, all  
recommendations or suggestions are presented  
without guarantee or responsibility on our part. We  
disclaim all liability in connection with the use of  
information contained herein or otherwise.