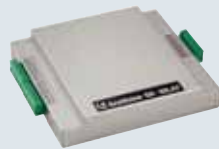


GV-IO

Specification	
Communication	RS-485, 2400~9600
Output	Output: 16
Input	Input: 8
	Input Signal: 0-5V DC
	High State: 5V
	Low State: 0V
Dimension (mm)	202 (W) x 39 (H) x 166 (D)



GV-RELAY

Specification	
Relay Output	8
Relay Status	Normal Open
Power Consumption	5VDC , 350mA (MAX)
Relay On Time	8 ms
Relay Off Time	5 ms
Dimension (mm)	202 (W) x 39 (H) x 166 (D)



GV-HUB

Specification	
Serial Interface	RS-232
	Signal: DCD, RxD, TxD, DTR, GND, DSR, RTS, CTS
	Connector: 4 x DB9 Male (A, B, C, D)
	RS-485
	Signal: D+, D-, GND
	Connector: 4 x Terminal Block (A, B, C, D)
	Serial Line Protection
	16 KV ESD for All Signals
USB	Compliance
	USB 1.1, 1.0
Communication	Speed
	Full Speed 12 Mbps
	Parity
	None, Even, Odd
	Data Bit
	7, 8
	Stop Bit
	1 (default), 2
	Flow Control
	RTS/CTS, XON/XOFF
	Speed
	600 bps to 115,200 bps
Dimension (mm)	103 (W) x 30 (H) x 125 (D)



GV-DATA CAPTURE

Specification		
Input	RS-232 from POS	DB9 female
	Parallel port from POS	DB25 male
Output	RS-232 to printer	DB9 male
	Parallel port to printer	DB25 female
	RS-232 to DVR	DB9 female
	RS-485+	Connect to GV-NET RS-485+
	RS-485-	Connect to GV-NET RS-485-
Dimension (mm)	163 (W) x 118 (H) x 30 (D)	



GV-NET

Specification	
Communication	1,200~19,200 bps
DC In	Power Adaptor DC 5V
Dimension (mm)	103 (W) X 32 (H) X 64 (D)



GV-KEYBOARD

Specification		
Output	RS-232 to PC	DB9 Female
	USB	USB 1.1
	RS-485+	Connects to GVNET or GV-NET card RS-485+
	RS-485-	Connects to GVNET or GV-NET card RS-485-
Communication	RS-232	9,600 bps
	RS-485	9,600 bps
Power	DC In	DC 12V 1A
	RS-485	DC 12V
Dimension (mm)	300 (W) x 45 (H) x 161 (D)	



IR REMOTE CONTROL

Specification	
Operation Distance	7 meters
Receiving Angle	± 30 degrees
Frequency	38 KHz
Power	R03 size AAA/1.5V
	Battery x 2 units (Remote Control)
Dimension (mm)	53 (W) x 28 (H) x 185 (D) (Remote Control)



GV-DSP Real-time Display Card

Specification	
Display Rate	240 fps, 480 fps
Input	8, 16 channels
Output	TV-Out x 1



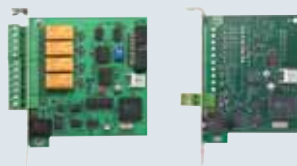
GV-IO 12-In Card

Specification	
Input	12
Input Signal	0~5V DC
High State	5V
Low State	0V



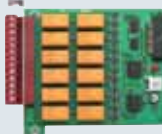
GV-Hybrid DVR Card

Specification	
Audio Input	RCA connector x 4
Video Resolution	NTSC: 720x480 30 fps/per channel
	PAL: 720x576 25 fps/per channel



GV-NET/IO Card GV-NET Card (without IO function)

Specification	
Communication	1,200~19,200 bps
Relay Output	4, off time 4ms
Input	4
DC In	DC 5V, 1A



GV-IO 12-Out Card

Specification	
Relay Output	12
Relay Status	Normal Open
Relay Capacitance	2A/30V DC; 0.25A/250V AC
Relay On Time	4 ms
Relay Off Time	4 ms
DC In	DC 5V, 1A



9F, No. 246, Sec. 1, Neiuhu Rd., Taipei, Taiwan, 114, R.O.C.
Tel: +886-2-8797-8377 Fax: +886-2-8797-8335
Web Site: www.geovision.com.tw
Email: sales@geovision.com.tw



★ All specifications may change without prior notification.



GV-Series Surveillance System

- 480 FPS Recording Rate; 16 Audio Recording Channels
- Recording Resolution up to 720X480 (NTSC) and 720x576 (PAL)
- Screen Resolution up to 1280x1024
- Object Tracking and Zooming
- Object Counting/Index/Monitoring
- SMS Support
- Vital Sign Monitor
- Authentication Server
- IR Remote Control
- GV-Keyboard
- Hybrid DVR
- Remote Monitoring via PDA and Smartphone



V7.0 New FEATURES

- GV-Keyboard (optional)
- Hybrid Card: hardware-based compression (optional)
- GV600/650/800 cards with the Noise Filter function to eliminate video signal interference
- Higher NTSC resolution support of 720 x 240, 720 x 480, and 720 x 480 (Deinterlace); higher PAL resolution support of 720 x 288, 720 x 576, and 720 x 576 (Deinterlace)
- Software-based Deinterlace
- Higher screen resolution support of 1280 X 1024
- Support more PTZ domes: SAE DR-E588, Kenko DMP23H1, and Directed Perception PTU-D46
- POS codepage mapping: supports special characters and symbols display
- Continuous playback of set frames A to B
- EXE format export, playable with any third-party players
- AVI format export in multiple screens mode
- DVD format export for Hybrid Card-format files, playable with any DVD players
- Support Windows XP/Server 2003 burning software: directly burns a file into CD media
- RSA network security
- Synchronized audio and video playback in WebCam RPB
- Authentication Server: central control of password settings in local GV-DVRs
- Live view via Windows and Symbian-based smartphones

V6.1 FEATURES

- Unattended and missing object detection: highlights the locations and sends out alerts
- Windows Lockup: launches GV-desktop to lock up the Windows
- SMS alerts available in Main System, Center V2 and Vital Sign Monitor
- Support 1,000 accounts for logins and passwords
- Alarm on objects that pass between predefined regions
- Object tracking and zooming by PTZ domes
- Object index for a quick search in ViewLog
- E-Map with an ease of user interface
- Synchronized audio and video for both live and playback modes
- Export a video footage within a specified period of time
- Support resolution of 640 x 240 on WebCam
- Record live video on WebCam Multiview
- Multiple host connections in Webcam Multiview: support multiple cameras from different hosts
- Center V2 Pro supports up to 50 subscribers and 800 channels (optional)
- Activate alarms, module outputs, and SMS from Center V2
- Dispatch server services up to 25,000 subscribers (optional)
- Vital Sign Monitor (VSM) monitors unusual status of multiple surveillance sites (optional)
- IR Remote Control (optional)

MONITOR VIEWING

- Dual display operation for live monitoring and ViewLog playbacks on two monitors
- Full screen view
- Object Counting allows you to count the number of objects that pass between predefined regions
- Screen pop-ups on motion or alarm activation
- Keep Days: keeps video files for a set number of days
- Digital watermark on AVI files for video authentication

RECORDING

- Choice of recording at 25,30,60,120,240,480 fps
- Choice of recording includes round-the-clock, motion detection, alarm triggers and schedule mode
- Adjustable recording quality and frame rate for each camera
- Pre-motion and post-motion recording



AUDIO

- 16 channels of live audio streaming and recording (optional with GV-A16)

POS INTEGRATION (GV-Data Capture required)

- POS video text overlay displays text messages onto live monitoring screen and video files
- Compatible with up to 4 POS devices
- POS Field Filter displays transaction events filtered by defined conditions
- POS event search by transaction keyword and transaction type (eg. void)
- Activate recording when transaction starts
- Transaction data is stored in a database file (Microsoft Access format) on GV-DVR system, applicable to the retroactive analyses or reports
- Adjustable on-screen font type, text color, text background color and text alignment
- Abnormal transaction alarm
- Cash drawer opening record

SEARCH & PLAYBACK

- Object Search: searches specific objects or motion changes within a defined area in a video footage
- Index Search: searches and plays back videos of motion/alarm triggers, and POS transaction events
- Thumbnail Browse for ease of search for specific frames within a video footage

NOTIFICATION

- E-mail notification with video images (in attachment) on motion and alarm activation
- E-mail or telephone notification on video lost or I/O error
- Direct PTZ dome to a preset location on motion and alarm activation

WEBCAM

- Single View: 1 and 2 screens; Multi View: 1, 4, 8, and 16 screen divisions
- User-definable Bandwidth Control ensures image transmission does not exceed the allocated bandwidth
- Full control of PTZ domes and I/O devices from a remote location
- Remote control of PTZ domes and I/O devices
- Two-way audio communication with GV-System (receiving and broadcasting)

REMOTE PLAYBACK

- Remote access to video and audio files
- 32 channels of remote playback simultaneously
- Address book allows you to create shortcuts to frequently used system operations
- Locate files by a specific date, time, or camera
- Advanced search function by a time frame and selected camera
- Data transmission bandwidth control

CENTER V2 (optional)

Create a Central Monitoring Station with Center V2! Effectively reduce false alarms! With video (live or attachment mode) transmitted instantly from the surveillance site to Center V2, you can verify the nature of the alarm, and give the video footages to the proper authorities for optimum action in a matter of minutes.

- Instant video attachment to Center V2 on motion, alarm, and panic button activation
- Support 6/12/30 (for single monitor) and 9/20/42 (for dual monitors) screen divisions in the 1280 x 1024 resolution; support 6/15/24 (for single mointor) and 9/25/36 (for dual monitors) screen divisions in the 1024 x768 resolution
- Two-way audio communication (receiving and broadcasting)
- Dual view support: allows live video and event list displaying in separate monitors
- Keep track of server activities including motion event, alarm event, subscriber login/logout, and connection status



Unattended/ Missing Object Detection



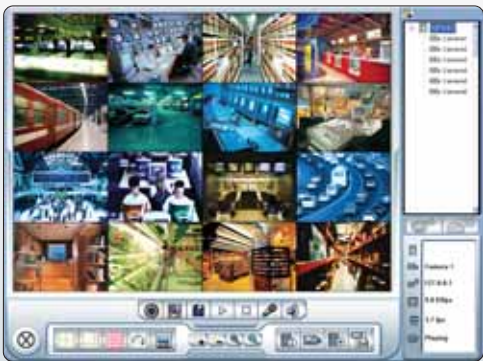
ViewLog



E-map



POS



WebCam Multiview



Center V2



Live View for PDA and Smartphone