



SECURITY SOLUTIONS

At-A-Glance Product Guide

With a presence in 150 million homes, Resideo's smart home solutions help security dealers build their business for the future by offering a broad range of home security and automation solutions that help simplify their operations and strengthen relationships with their customers.

We offer residential and small-to-medium sized businesses a variety of Resideo security products. We are authorized to distribute the following security systems that seamlessly integrate with lighting, smart thermostats, and more for control whether at home or away:

ProSeries Platform

The ultimate connected home security system with dedicated touch-screen panels and built-in Amazon Alexa to control security settings, raise a thermostat, adjust smart bulbs and much more; all with the touch of a button or a simple voice command.

VISTA® Platform

A proven security and life-safety platform that is highly flexible and scalable, offering a wide selection of hardwired and wireless sensors, numerous user interface options, and support for automation capabilities.

LYNX® Platform

A professional wireless security and smart home platform with a wide selection of wireless sensors that offer fast and dependable installation.

Other security and life-saving accessories, such as sensors, glassbreak detectors, combo smoke/CO detectors and keypads.

Wireless Systems: ProSeries Security and Life Safety

ProSeries products are a professional, next-generation security and life safety platform for residential and small business installations. With a modular design and seamless hardware and software, ProSeries offers an efficient, customized installation and a great user experience. It also features proven life safety, advanced smart home capabilities and technology that makes takeovers and upgrades easier than ever. The ProSeries platform helps you win more business, keep your customers longer and drive more profits.



Available on ProSeries A7 Plus

- Built-in Amazon Alexa
- Built-in camera
- Hands-free disarming
- MotionViewer® support

	PROSERIES 7" ALL-IN-ONE TOUCHSCREEN PANEL
SYSTEM CAPACITIES	
Maximum Security Zones (including SiX and legacy one-way devices)	250
Maximum SiX Two-Way Wireless Devices	127
Maximum Secondary Wi-Fi® Touchscreen Keypads	8
User Codes	96
Event Log	4000
Wireless Remote Key Fobs	32
Wireless Keypads (Touchscreen or LCD)	8
Maximum Smart Scenes	100

	PROSERIES 7" ALL-IN-ONE TOUCHSCREEN PANEL
SYSTEM CAPACITIES	
Partitions	4
Scenes (Requires Total Connect)	100
Bluetooth Devices	6
Maximum Two-Way Wireless Indoor/Outdoor MotionViewers (PROA7PLUS)	8
Z-Wave Devices Total:	78
Lights/Lamps	60
Locks	6
Thermostats	6
Garage Doors	6

CONTROL PANEL



PROA7PLUS
(Honeywell Home branded)
PROA7PLUSC
(Resideo branded)
7" AIO Security Panel with
Wi-Fi®/Z-Wave® module
(included)

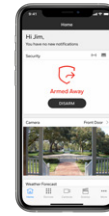


PROA7
(Honeywell Home branded)
PROA7C
(Resideo branded)
7" AIO Security Panel



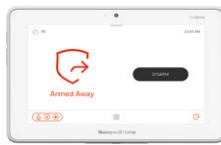
PROA7DM
Desk Mount for 7" AIO Security Panel

APP



Resideo Total Connect 2.0
and AlarmNet Plans
Security - Transmission of alarm signals
Smart Security - Security plus
remote control of security functions
and system notifications
Smart Home - Smart Security plus
automation services for controlling
lights, smart scenes and Amazon Alexa

USER INTERFACES



PROWLTOUCH (Honeywell Home branded)
PROWLTOUCHC (Resideo branded)
7" Wireless Touchscreen



PROWLTOUCHDM
Desk Mount for
7" Wireless Touchscreen



PROSIXLCDKP (Honeywell Home branded)
PROSIXLCDKPC (Resideo branded)
Wireless Touchpad

WIRELESS CONVERSION



PROTAKEOVER
Wireless Takeover Module -
enables ProSeries panels to communicate with multiple
one-way wireless security sensor protocols



PROSIXRPTR
Wireless Repeater



PROSIXC2W
Hardwired-to-SiX Wireless Converter

COMMUNICATORS



PROLITE-A
US/Canada, AT&T® Network

PROLITE-V
US, Verizon® Network

PROLITE-CN
Canada, Bell Network



PROLITE-ANT
External Antenna Kit



PROWIFIZW
ProSeries Wi-Fi®/Z-Wave®
Communications Module

PROWIFI
Wi-Fi Module for PROA7

VIDEO/AUTOMATION



IPCAM-WIC2
HD Wi-Fi® Indoor
Video Camera



IPCAM-WOC2
HD Wi-Fi® Outdoor
Video Camera



DBCAM-TRIM2 (silver)
DBCAM-TRIM2BR (bronze)
Wi-Fi Video Doorbell



TH6320ZW2003
T6 Z-Wave®
Thermostat

Z-WAVE PLUS™ LIGHTING CONTROL



Z5SWPID
Plug-in Switch/
Dual Outlet



Z5DIMPID
Plug-in Dimmer/
Dual Outlet



Z5SWITCH
Switch

Z5DIMMER
Dimmer

Z53WSWITCH
Auxiliary 3-Way Switch



Z5OUTLET
Outlet



Z5SWPIO
Plug-in Outdoor
Switch, Black

SECURITY AND SAFETY

DOOR/WINDOW CONTACTS



PROSIXCT
Door/Window
Sensor
CR123 (1)*



PROSIXMINI
Mini Door/Window
Sensor
CR2450 (1)*



PROSIXMINI2
Mini Door/Window
Sensor
CR2 (1)*

GLASSBREAK AND SHOCK SENSORS



PROSIXGB
Glassbreak
Detector
CR123 (1)*



PROSIXSHOCK
Shock Sensor
CR123A (1)*

MOTIONVIEWER



PROINDMV
Indoor MotionViewer
(PROA7PLUS)

ENVIRONMENTAL PROTECTION



PROSIXFLOOD
Flood Detector
CR123A (1)*



PROSIXTEMP
Temperature
Sensor
CR123A (1)*

MOTION SENSOR



PROSIXPIR
Motion Detector
CR123 (1)*

SOUNDERS



PROSIXSIREN
Indoor Siren
AA Lithium (4)*



PROSIXSIRENO
Outdoor Siren
AA Lithium (4)*

OUTDOOR PROTECTION (requires PROTAKEOVER Module)



5800PIR-OD2
Outdoor
Motion Sensor
AA (2)*



58160D
Outdoor
Contact/
Transmitter
AA (2)*

ASSET PROTECTION (requires PROTAKEOVER Module)



5870API-WH
5870API-GY
Indoor Asset Protection Sensor
CR2 (1)*

REMOTE CONTROL KEYFOB



PROSIXFOB
Two-Way Wireless Key
2032 (1)*

PERSONAL PROTECTION



PROSIXMED
Personal Medical Transmitter
CR2450 (1)*



PROSIXPANIC
Personal Panic Transmitter
CR2450 (1)*

LIFE SAFETY



**PROSIXCOMBO /
PROSIXCOMBOC****
Combination Smoke/
Carbon Monoxide
(CO) Detector
CR123A (4)*



**PROSIXCO /
PROSIXCOCN****
Carbon Monoxide (CO)
Detector
CR123A (2)*



**PROSIXSMOKEV /
PROSIXSMOKEV****
Smoke Detector
CR123A (2)*



**PROSIXHEATV /
PROSIXHEATV****
Heat Sensor
CR123A (2)*

*Battery **Canada

Hybrid Systems: The VISTA® Residential and Light Commercial Family

A proven security and life safety platform that’s highly flexible and scalable, offering a wide selection of hardwired and wireless sensors, numerous user interface options, and support for automation capabilities.



VISTA-15P
With up to 32 zones, this workhorse is a proven solution with a massive installed base that’s ideal for residential and small to medium business installations.

VISTA-20P
Expands to 48 zones and two partitions to meet the needs of larger residential and light commercial installations.

VISTA-21iP
All the power of VISTA-20P with integrated communications, including a built-in Internet Communicator and an optional snap-in radio.

	VISTA-15P	VISTA-20P	VISTA-21iP
SYSTEM CAPACITIES			
Maximum Zone Capacity	32	48	48
Std. Hardwired Zones (with zone doubling)	6 (-)	8 (15)	8 (15)
Maximum ECP Hardwired Expansion Zones	16	40	40
Maximum Wireless Expansion Zones	26	40	40
Partitions	1	2 "true"	2 "true"
Maximum Number of Touchscreens	2	4	4
User Codes	32	48	48
Event Log	50	100	100
Maximum Number Two-Wire Smokes	16	16	16
Maximum Number of Schedules	8	32	32

CONTROL PANEL



VISTA-15P
Control Panel
VISTA-15PSIA
Control Panel for SIA Certifications

VISTA-20P
Control Panel
VISTA-20PSIA
Control Panel for SIA Certifications
VISTA-20PUL
Cabinet with Commercial UL Listings

VISTA21iPLTE
Control Panel with built-in IP and optional LTE Radio
V21SIALTE
Control Panel for SIA Certifications

KEYPAD OPTIONS

GRAPHIC TOUCHSCREENS



6290W (Honeywell Home branded)
6290WC (Resideo branded)
7" Color Touchscreen Keypad with Voice



TUXEDOW (Honeywell Home branded)
TUXEDOWC (Resideo branded)
7" Color Touchscreen Keypad with Voice and Automation

WIRELESS KEYPADS



5828
Wireless Fixed English Keypad
5828V
Wireless Fixed English Voice Keypad

HARDWIRED KEYPADS



6150/6150SP
Fixed Language Display Keypad



6460S (Silver)
6460W (White)
Premium Alpha Keypad



6160
32 Character Alpha Display Keypad

KEYPADS WITH INTEGRATED RECEIVERS

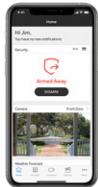


6150RF
Fixed Language Integrated Keypad/Transceiver



6160RF
Deluxe Custom Alpha Integrated Keypad/Transceiver

APP



Resideo Total Connect 2.0 and AlarmNet Plans
Security - Transmission of alarm signals
Smart Security - Security plus remote control of security functions and system notifications
Smart Home - Smart Security plus automation services for controlling lights, smart scenes and Amazon Alexa

ZONE EXPANDERS



4204
Intelligent Four Zone Relay Board
4219
Wired Eight Zone Expander
4229
Wired Eight Zone Expander/Two Zone Relay Board

WIRELESS RECEIVERS/REPEATERS



5881ENL
Up to 8 zones
5881ENM
Up to 16 zones
5881ENH
Unlimited zones depending on control panel



5800RP
Wireless Repeater
5883H
Wireless Transceiver

COMMUNICATORS



LTEM-XA (AT&T)
LTEM-XV (Verizon)
LTEM-XC (Bell)**
LTE® Communicator

LTE-IA (AT&T)
LTE-IV (Verizon)
LTE-IC (Bell)**
LTE and Internet Multi-Path Communicator



LTEM-PA (AT&T)
LTEM-PV (Verizon)
Advanced Modular Communicator Multi-Path LTE CAT M1 Communicator

LTEM-PIA (AT&T)
LTEM-PIV (Verizon)
LTE CAT M1 Cellular and Internet Communicator

PROWIFIZW
Wi-Fi/Z-Wave® Module for LTEM-P

PROWIFI
Wi-Fi Module for LTEM-P

PRODCM
Dialer Capture Module for LTEM-P

LTE-21V
Communicator for VISTA 21iPLTE

7847i
Internet Communicator
7847i-E
Enterprise IP Communicator

VIDEO/AUTOMATION



IPCAM-WIC2
HD Wi-Fi® Indoor Video Camera



IPCAM-WOC2
HD Wi-Fi® Outdoor Video Camera



DBCAM-TRIM2 (silver)
DBCAM-TRIM2BR (bronze)
Wi-Fi Video Doorbell



TUXEDOW (Honeywell Home branded)
TUXEDOWC (Resideo branded)
7" Color Touchscreen Keypad with Voice and Automation



TH6320ZW2003
T6 Z-Wave® Thermostat



4232CBM
Connected Building Module for Automation

Z-WAVE PLUS™ LIGHTING CONTROL



Z5SWPIO
Plug-in Outdoor Switch, Black



Z5DIMPDI
Plug-in Dimmer/Dual Outlet



Z5SWPID
Plug-in Switch/Dual Outlet



Z5OUTLET
Outlet



Z5DIMMER
Dimmer
Z5SWITCH
Switch
Z53SWITCH
Auxiliary 3-Way Switch

SECURITY AND SAFETY

DOOR/WINDOW CONTACTS

Hardwired



951WG
3/8" Diameter
Miniature Press Fit
Magnetic Contact



7939WG
Magnetic Contact
7939WG-WH (White)
7939WG-BR (Brown)
7939WG-GY (Grey)

Wireless



5800MINI
5800MINI BR
Door/Window
Contact
CR2032*



5815/5815WG
Door/Window
Transmitter
CR123*



5816WMWH
5816WMBR
Two Zone Door/
Window Transmitter
CR123*



5820L
Slimline
Door/Window
Transmitter
AAA*



5817CBXT
Light
Commercial
Transmitter
CR123*



5800RPS
Recessed
Transmitter
1620*



5818MNL
Recessed
Transmitter
AAA*



5800MICRA
Recessed Window
Transmitter
CR1620*

GLASSBREAKS

Hardwired



FG1625/1625T
Glassbreak Detector
FG1625F
Flush Mount Glassbreak Detector
FG-1625R/1625RT
Glassbreak Detector

Wireless



5853
Glassbreak
Detector
CR123 (2)*

SHOCK SENSORS

Wireless



5819S (White)
5819S-BR (Brown)
Shock Processor
and Transmitter
CR123*



5800SS1
Shock
Sensor
CR2*

MOTION SENSORS

Hardwired



IS216T
PIR



IS335/IS335T
PIR with Pet
Immunity



5800PIR
PIR with Selectable
Pet Immunity and
Low Temperature
Alert
CR123*

Wireless



5800PIR-RES
Pet Immune PIR
CR123*



5800PIR-COM
Light Commercial
PIR with Low
Temperature
Alert
CR123*

FLOOD PROTECTION



5800FLOOD
Temperature
Sensor and
Flood
Detector
CR123*



5821
Temperature Sensor and Flood Detector CR123*
FP280
External Probe for Flood Sensing
T280R
External Probe for Freezer and
Refrigeration Monitoring

OUTDOOR PROTECTION



5800PIR-OD2
Outdoor Motion
Sensor
AA (2)*



58160D
Outdoor
Contact/
Transmitter
AA (2)*

SOUNDERS



5800WAVE
Siren

ASSET PROTECTION



5870API-WH
5870API-GY
Indoor Asset Protection Sensor
CR2 (1)*

REMOTE CONTROL KEYFOBS



5834-4
5834-4EN (with plated bezel and key ring)
Four-button Wireless Key Transmitter
3V, 210mAh*

PERSONAL PROTECTION



5802WXT
One-button
Personal Panic
Transmitter
CR2032*



5802WXT-2
Two-button
Personal Panic
Transmitter
CR2032*

LIFE SAFETY



5806W3/
5806W3A**
Smoke
Detector
CR123*



5808W3/
5808W3A**
Smoke and Heat
Detector with Low
Temperature Detection
CR123*



5809SS
Rate-of-Rise Fixed
Temperature Heat
Detector
CR123*



5800CO/
5800COA**
Carbon Monoxide
Detector
CR123*



5800COMBO/
5800COMBO-CN**
Combination
Smoke/Carbon
Monoxide Detector
CR123 (4)*

*Battery **Canada

Hybrid Systems: The VISTA Light Commercial Solutions Family

A proven, highly reliable solution, the VISTA® light commercial platform supports both burglary and fire alarm applications and a vast number of hardwire, V-Plex® and wireless options, maximizing installation flexibility.



SYSTEM CAPACITIES	BURGLARY		FIRE/BURGLARY		
	VISTA-128BPT	VISTA-250BPT	VISTA-32FBPT	VISTA-128FBPT	VISTA-250FBPT
Maximum Zone Capacity	128	250	32	128	250
Maximum Standard Hardwire Zones	9	9	8	8	8
Maximum Wireless Expansion Zones	127	249	32	127	249
V-Plex® Devices	119	241	24	120	242
Two-Wire Smokes	16 (Zone 1)	16 (Zone 1)	32 (Zone 1 & 2)	32 (Zone 1 & 2)	32 (Zone 1 & 2)
Four-Wire Smokes	Zone 1-128	Zone 1-250	Zone 1-32	Zone 1-128	Zone 1-250
Maximum Number of Keypads	31 (Alpha) 6 (Graphics)	31 (Alpha) 6 (Graphics)	31 (Alpha) 6 (Graphics)	31 (Alpha) 6 (Graphics)	31 (Alpha) 6 (Graphics)
User Codes	150	250	75	150	250
Number of Partitions	8	8	2	8	8
Output Relays	96	96	96	96	96
Access Control Relays	8 Doors	15 Doors	8 Doors	8 Doors	15 Doors
Schedules	20	20	20	20	20
Event Log	512	1000	512	512	1000
UL	985/1023, 609/365, 611/1610, 1037/1076, 1635	985/1023, 609/365, 611/1610, 1037/1076, 1635	864/609, 611/1610, 365, 1076	864/609, 611/1610, 365, 1076	864/609, 611/1610, 365/985, 1076
ULC/ORD	S303, S304, S545, C1023 C1076	S303, S304 S545, C1023	S303, 304, S559, S545 C1023	S303, 304, S559, S545 C1023	S303, 304, S559, S545 C1023

CONTROL PANEL



BURGLAR ALARM

VISTA-128BPT
VISTA-250BPT

FIRE/BURGLAR ALARM

VISTA-32FBPT
VISTA-128FBPT
VISTA-250FBPT

KEYPAD OPTIONS

GRAPHIC TOUCHSCREENS



6290W (Honeywell Home branded)
6290WC (Resideo branded)
7" Color Touchscreen Keypad with Voice



TUXEDOW (Honeywell Home branded)
TUXEDOWC (Resideo branded)
7" Color Touchscreen Keypad with Voice and Automation

HARDWIRED SYSTEMS



6160
32 Character Alpha Display Keypad



6160CR-2
Light Commercial Fire Alpha Keypad UL864 Rev 9 Listed



6460W (White)
6460S (Silver)
Premium Alpha Keypad

HYBRID SYSTEMS (Hardwired and Wireless)



6160RF
Deluxe Custom Alpha Integrated Keypad/Transceiver

ZONE EXPANDERS

V-Plex®



4101SN Addressable Relay Module
4190SN Remote Two Zone Point Module
4193SN/4193SNP SIM Serial Interface Module
4208EX Eight Zone V-Plex Expander
4208SN Serialized Eight Zone Remote Point Module
4208SNF Universal Class A & Class B Expander Module
4297 Extender Module

Hardwired Relays



4204
Intelligent Four Zone Relay Board
4204CF
Supervised Appliance Module (Two NAC circuits)

WIRELESS RECEIVERS/REPEATERS



5883H
Wireless Transceiver
5881ENL
Up to 8 zones
5881ENH
Unlimited zones depending on control panel
5800RP
Wireless Repeater

COMMUNICATORS

HYBRID



LTEM-XA (AT&T)
LTEM-XV (Verizon)
LTEM-XC (Bell)**
LTE Communicator

HYBRID MULTI-PATH



LTEM-PA (AT&T)
LTEM-PV (Verizon)
Advanced Modular Communicator Multi-Path LTE CAT M1 Communicator
LTE-1A (AT&T)
LTE-1V (Verizon)
LTE-1C (Bell)**
LTE and Internet Multi-Path Communicator
LTEM-PIA (AT&T)
LTEM-PIV (Verizon)
LTE CAT M1 Cellular and Internet Communicator

OPTIONAL MODULES FOR LTEM-P

PROWIFIZW Wi-Fi®/Z-Wave® Module
PROWIFI Wi-Fi Module
PRODCM Dialer Capture Module

INTERNET COMMUNICATORS



7847i
Internet Communicator
7847i-E
Enterprise IP Communicator

HIGH SECURITY



LTE-HSV
LTE High Security Multi-Path Communicator

FIRE



LTE-CFA/CFV
Light Commercial Fire Internet and LTE Communicators

VIDEO/AUTOMATION



DBCAM-TRIM2 (silver)
DBCAM-TRIM2BR (bronze)
Wi-Fi Video Doorbell



IPCAM-WIC2
HD Wi-Fi® Indoor Video Camera

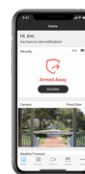


IPCAM-WOC2
HD Wi-Fi® Outdoor Video Camera



4232CBM
Connected Building Module for Automation

APP



Resideo Total Connect 2.0 and AlarmNet Plans

Security - Transmission of alarm signals

Smart Security - Security plus remote control of security functions and system notifications

Smart Home - Smart Security plus automation services for controlling lights, smart scenes and Amazon Alexa

*Battery **Canada

SECURITY AND SAFETY

DOOR/WINDOW CONTACTS

V-Plex®



4191SN
V-Plex Contact
Recessed

4939SN-WH
V-Plex Contact
Surface

4959SN
V-Plex Contact
Overhead Door

Hardwired



958/959/MPS52
Overhead Door Magnetic Contact

951WG
3/8" Diameter Miniature Press
Fit Magnetic Contact

7939-2
Magnetic Contact
7939WG
Magnetic Contact

Wireless



5800MINI
5800MINI BR
Door/Window
Contact CR2032*

5816WMWH
5816WMBR
Two Zone Door/Window
Transmitter CR123*

5800RPS
Recessed
Transmitter
1620*

5817CBXT
Light
Commercial
Transmitter
CR123*

5820L
Stimline
Door/
Window
Transmitter
AAA*

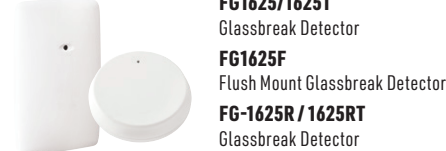
GLASSBREAK AND SHOCK SENSORS

V-Plex®



FG1625SN
V-Plex
Glassbreak
Detector

Hardwired



FG1625/1625T
Glassbreak Detector
FG1625F
Flush Mount Glassbreak Detector
FG-1625R/1625RT
Glassbreak Detector

Wireless



5853
Glassbreak
Detector
CR123 (2)*

5819S (White)
5819S-BR (Brown)
Shock Processor
and Transmitter
CR123*

5800SS1
Shock
Sensor
CR2*

MOTION SENSORS

V-Plex®



DT8050A-SN
IS3050A-SN
V-Plex Motion
Detector

Hardwired



IS3035V (35')
IS3050V (50')
PIR Motion Detector

IS310/320
Request-To-Exit PIR

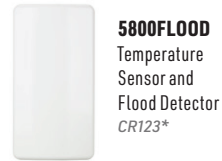
Wireless



5800PIR
PIR with Selectable
Pet Immunity and
Low Temperature
Alert
CR123*

5898
X-Band
DUAL TEC®
Motion Sensor
AA (4)*

FLOOD PROTECTION



5800FLOOD
Temperature
Sensor and
Flood Detector
CR123*



5821
Temperature Sensor and Flood Detector CR123*
FP280
External Probe for Flood Sensing
T280R
External Probe for Freezer and Refrigeration
Monitoring

OUTDOOR PROTECTION



5800PIR-OD2
Outdoor Motion
Sensor
AA (2)*



5816OD
Outdoor Contact/
Transmitter
AA (2)*

SOUNDERS

Hardwired



WAVE2
Two-tone
Siren



702
Self-contained
Electronic Siren

Wireless



5800WAVE
Siren
(Requires
transceiver)

ASSET PROTECTION



5870API-WH
5870API-GY
Indoor Asset
Protection Sensor
CR2 (1)*

HOLD-UP SWITCH



269R 269SN
270R 5869
Hold-up Switches
(Available in wired, V-Plex®
and wireless versions)



264
Moneyclip



266
Foot Rail

ACCESS CONTROL



VISTAKEY
V-Plex® Single
Door Access
Control System

LIFE SAFETY

V-Plex®



5193SD
V-Plex Addressable
Smoke Detector
5193SDT/5193SDTA**
V-Plex Addressable
Photoelectric Smoke
Detector with Integral
Heat Sensor

Hardwired



5140MPS-1
5140MPS-2
Manual
Pull Stations

Wireless

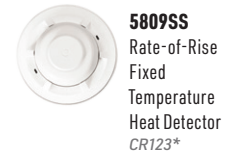


5806W3/
5806W3A**
Smoke Detector
CR123*

5800CO/
5800COA**
Carbon Monoxide
Detector CR123*

5808W3/5808W3A**
Smoke and Heat Detector
with Low Temperature
Detection CR123*

5800COMBO/
5800COMBO-CN**
Combination Smoke/Carbon
Monoxide Detector CR123 (4)*



5809SS
Rate-of-Rise
Fixed
Temperature
Heat Detector
CR123*

*Battery **Canada

Wireless Systems: The LYNX® Family

A professional wireless security and smart home platform with a wide selection of wireless sensors that offers fast and dependable installations.



LYNX Plus

Proven wireless technology in a basic self-contained security solution combining a control panel, keypad and two-way voice system.

LYNX Touch 5210

An all-in-one, wireless home and business control system featuring an intuitive touchscreen, Z-Wave® automation capabilities and advanced alarm communications.

LYNX Touch 7000

An all-in-one home and business control system featuring a large 7" touchscreen, Z-Wave automation capabilities and advanced alarm communications.

	LYNX PLUS (L3000)	LYNX TOUCH (L5210)	LYNX TOUCH (L7000)
SYSTEM CAPACITIES			
Maximum Security Zone Capacity	41	64	80
Maximum Standard Hardwire Zones	1	1	1
Maximum Wireless Security Expansion Zones	40	63	79
Maximum Keyfob Zones	0	16	24
User Codes	8	32	48
Schedules	8	20	20
Event Log	84	128	256

ALL-IN-ONE SYSTEMS



L3000
LYNX Plus Wireless Self-Contained
All-in-One Security Control
L3000-SIA
LYNX Plus Wireless Self-Contained
All-in-One Security Control with
SIA CP-01 Compliance

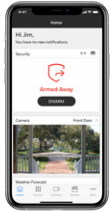


**L5210/
L5210-CN****
LYNX Touch 5210
Self-Contained
All-in-One Control
System with
4.3" Touchscreen



**L7000/
L7000-CN****
LYNX Touch 7000
Self-Contained
All-in-One Control
System with
7" Touchscreen

APP



Resideo Total Connect 2.0 and AlarmNet Plans

Security

Transmission of alarm signals

Smart Security

Security plus remote control of security functions and system notifications

Smart Home

Smart Security plus automation services for controlling lights, smart scenes and Amazon Alexa

KEYPAD



5828
Wireless Fixed English Keypad

5828V
Wireless Fixed English Voice Keypad

COMMUNICATORS



LTE-L57V (Verizon)
LTE Communicator
LTE-L57A (AT&T)
LTE Communicator
LTE-L57C (Bell)**
LTE Communicator



ILP5
Internal Internet
Communicator
for L5210 and L7000



L5100-WIFI
Wi-Fi® IP
Communication Module
for L5210 and L7000

VIDEO/AUTOMATION



IPCAM-WIC2
HD Wi-Fi® Indoor
Video Camera



IPCAM-WOC2
HD Wi-Fi® Outdoor
Video Camera



DBCAM-TRIM2 (silver)
DBCAM-TRIM2BR
(bronze)
Wi-Fi Video Doorbell

Z-WAVE®



L5100-ZWAVE
Z-Wave Control
Module for L5210
and L7000



TH6320ZW2003
T6 Z-Wave
Thermostat



Z5SWPIO
Plug-in Outdoor
Switch, Black



Z5DIMPID
Plug-in Dimmer/
Dual Outlet



Z5SWPID
Plug-in Switch/
Dual Outlet



Z5OUTLET
Outlet



Z5DIMMER
Dimmer

Z5SWITCH
Switch

Z53WSWITCH
Auxiliary
3-Way Switch

OPTIONS AND TOOLS



LYNXTOUCH-MSD
LYNX Touch MSD Tool for
upgrading LYNX panels



L3000DM
Desk Mount for L3000

L5000DM
Desk Mount for L5210

L7000DM
Desk Mount for L7000

SECURITY AND SAFETY

DOOR/WINDOW CONTACTS



5800MINI
5800MINI BR
Door/Window Contact
CR2032*



5815/5815WG
Door/Window
Transmitter
CR123*



5816WMWH
5816WMBR
Two Zone
Door/Window
Transmitter
CR123*



5820L
Slimline
Door/Window
Transmitter
AAA*



5800RPS
Recessed
Transmitter
1620*



5818MNL
Recessed
Transmitter
AAA*



5800MICRA
Recessed Window
Transmitter
CR1620*

GLASSBREAK AND SHOCK SENSORS



5853
Glassbreak Detector
CR123 (2)*



5819S (White)
5819S-BR (Brown)
Shock Processor
and Transmitter
CR123*



5800SS1
Shock Sensor
CR2*

MOTION SENSORS



5800PIR
PIR with Selectable Pet Immunity
and Low Temperature Alert
CR123*



5800PIR-RES
Pet Immune PIR
CR123*



5800PIR-COM
Light Commercial PIR with
Low Temperature Alert
CR123*

FLOOD PROTECTION



5800FLOOD
Temperature
Sensor and
Flood
Detector
CR123*



5821
Temperature Sensor and Flood Detector CR123*
FP280
External Probe for Flood Sensing
T280R
External Probe for Freezer and
Refrigeration Monitoring

OUTDOOR PROTECTION



5800PIR-OD2
Outdoor Motion
Sensor
AA (2)*



58160D
Outdoor
Contact/
Transmitter
AA (2)*

SOUNDERS



5800WAVE
Siren

ASSET PROTECTION



5870API-WH
5870API-GY
Indoor Asset Protection Sensor
CR2 (1)*

REMOTE CONTROL KEYFOBS



5834-4
5834-4EN (with plated bezel and key ring)
Four-button Wireless Key Transmitter
3V, 210mAh*

PERSONAL PROTECTION



5802WXT
One-button
Personal Panic
Transmitter
CR2032*



5802WXT-2
Two-button
Personal Panic
Transmitter
CR2032*

LIFE SAFETY



5806W3/
5806W3A**
Smoke
Detector
CR123*



5808W3/
5808W3A**
Smoke and Heat
Detector with Low
Temperature Detection
CR123*



5809SS
Rate-of-Rise Fixed
Temperature
Heat Detector
CR123*



5800CO/
5800COA**
Carbon Monoxide
Detector
CR123*



5800COMBO/
5800COMBO-CN**
Combination
Smoke/Carbon
Monoxide Detector
CR123 (4)*

*Battery **Canada



Resideo Technologies, Inc.
2 Corporate Center Drive, Suite 100
P.O. Box 9040
Melville, NY 11747
1-800-645-7492
resideo.com

L/RSSGDB/D | NM | 01/22
© 2022 Resideo Technologies, Inc. All rights reserved.
The Honeywell Home trademark is used under license from
Honeywell International Inc. This product is manufactured
by Resideo Technologies, Inc. and its affiliates.
Amazon, Alexa and all related logos are trademarks of
Amazon.com, Inc. or its affiliates.