

GV-GBLF2802 AI 2MP H.265 Super Low Lux WDR Pro Full Color Warm LED IR

Bullet IP Camera



- AI deep learning: Smart Perimeter Protection & Classification (Human, Vehicle)
- 1/2.8" progressive scan CMOS sensor
- Min. illumination at 0.008 lux
- Triple streams from H.265, H.264 or MJPEG
- Up to 30 fps at 1920 x 1080
- Smart warm LED distance up to 30 m (100 ft)
- Intelligent IR
- Wide Dynamic Range Pro (WDR Pro)
- IR distance up to 30 m (100 ft)
- Built-in microphone
- Built-in microSD card slot (SDHC / SDXC / UHS-I, Class 10) for local storage
- Ingress protection (IP67)
- Vandal resistance (IK10 for metal casing)
- DC 12V / PoE (IEEE 802.3af)
- 3D noise reduction
- AI analytics (Line Crossing, Region Intrusion)
- Smart lighting switch between IR LED (for motion detection) and Warm LED (for people, vehicle and motorcycle detection)
- Motion detection
- Text overlay
- Privacy mask
- 19 languages supported
- ONVIF (Profile G, S, T, M) conformant

Introduction

GV-GBLF2802 is a 2 MP outdoor bullet IP camera, equipped with smart warm LED for full color surveillance during nighttime. The camera supports H.265 video codec to achieve a better compression ratio while maintaining high-quality pictures at reduced network bandwidth. GV-GBLF2802 adheres to IP67 and IK10 standards and can be powered through PoE.

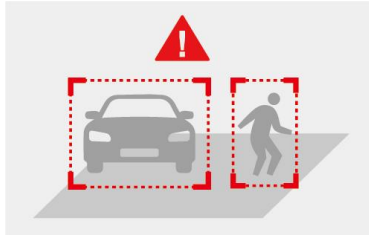
Empowered by deep learning algorithms, AI technology distinguishes humans and vehicles from other moving objects. Integrated with GeoVision Video Management Software (GV-VMS), it supports AI perimeter protection, real-time alert, playback, and more.

Models

Model	Iris	Focal Length (mm)	Horizontal FOV	Maximum Aperture	Image Format
GV-GBLF2802-2F	Fixed	2.8 mm	107°	F/1.6	1/2.8"
GV-GBLF2802-3F		3.6 mm	89°		

Deep Learning Function

AI Perimeter Protection (Line Crossing, Region Intrusion)



Specifications

Camera					
Image Sensor		1/2.8" progressive scan CMOS			
Picture Elements		1920 (H) x 1080 (V)			
Minimum Illumination	Color	0.008 Lux (F1.6, AGC ON)			
	IR On	0 Lux			
Shutter Speed		Auto / Manual (1/3 ~ 1/100000 sec)			
White Balance		Automatic, Manual			
Gain Control		Automatic, Manual			
S/N Ratio		50 dB			
WDR Pro		Yes			
Dynamic Range		120 dB			
Lens		GV-GBLF2802-2F		GV-GBLF2802-3F	
Megapixel		2 MP			
Day / Night		Yes (with removable IR-cut filter)			
Lens Type		Fixed			
Focal Length		2.8 mm		3.6 mm	
Maximum Aperture		F/1.6			
Mount		M12			
Horizontal FOV		107°		89°	
Operation	Focus	Fixed			
	Zoom	Fixed			
	Iris	Fixed			
IR LED	Quantity	1 IR LED			
	Max. IR Distance	30 m (100 ft)			
Smart Illumination	LED Quantity	1 Warm LED			
	Max. LED Distance	30 m (100 ft)			
DORI		Detect	Observe	Recognize	Identify
Lens	2.8 mm	41 m (134.5 ft)	16 m (52.4 ft)	8 m (26.2 ft)	4 m (13.1 ft)
	3.6 mm	50 m (164.0 ft)	20 m (65.6 ft)	10 m (32.8 ft)	5 m (16.4 ft)
Operation					
Video Compression		H.265, H.265+, H.264, H.264+, MJPEG			
Video Streaming		Three streams			
Video Resolution	Main Stream	1920 x 1080 (Default), 1280 x 720			
	Sub Stream	704 x 480, 704 x 576, 640 x 480, 640 x 360 (Default), 352 x 240, 352 x 288			
	Third Stream	704 x 480 (Default), 704 x 576, 480 x 240, 352 x 240, 352 x 288			
Frame Rate		30 fps at 1920 x 1080 / 1280 x 720 / 704 x 480 / 640 x 480 / 352 x 240 (60 Hz)			
		25 fps at 1920 x 1080 / 1280 x 720 / 704 x 576 / 640 x 480 / 352 x 288 (50 Hz)			
		* The frame rate and performance may vary depending on the number of connections and data bitrates (different scenes).			
Maximum Throughput	AI off	64 Mbps			
	AI on	12 Mbps			

Maximum Stream * When the total bitrate is within the maximum throughput		6	
Video Analytics		Motion Detection, Object Abandoned / Missing Detection, Video Exception	
Smart Alarm		Motion Detection, SD Card Error, SD Card Full, IP Address Conflict, Cable Disconnection, Scene Change Detection, Video Blur Detection, Video Cast Detection	
Image Setting		Brightness, Contrast, Hue, Saturation, Sharpness, 3D Noise Reduction, BLC, Antiflicker, White Balance, Shutter, Gain, Image Orientation (Flip, Mirror, 0°, 90°, 180°, 270° – including Corridor format)	
Audio Compression		G.711	
Audio Support		One-way audio	
Deep Learning Function			
AI Analytics		Line Crossing, Region Intrusion *The two functions can only be enabled one at a time.	
Network			
Interface		10/100 Ethernet	
Protocol		802.1x, DDNS, DHCP, FTP, HTTP POST, HTTP, HTTPS, IPv4, IPv6, NTP, ONVIF (Profile G, S, T, M), PPPoE, QoS, RTCP, RTMP, RTP, RTSP, SMTP, SNMP, UDP, UPnP	
Mechanical			
Camera Angle Adjustment	Pan	0 ~ 360°	
	Tilt	0 ~ 80°	
	Rotate	0 ~ 360°	
Connectors	Power	DC jack, PoE	
	Ethernet	RJ-45	
	Audio	Built-in microphone	Yes
		External microphone required	Yes (Audio jack, 3.5 mm)
		Built-in speaker	No
		External speaker required	No
		* For devices with a microphone or speaker, choose either the built-in or external option.	
		* If equipped with an Audio In port, it only supports microphones with power supply.	
	Local Storage	Micro SD card slot (SDHC / SDXC / UHS-I, Class 10) * UHS-II card type is not supported.	
General			
Operating Temperature		-30°C ~ 60°C (-22°F ~ 140°F)	
Humidity		0 ~ 95% (no condensation)	
Power Source		12V DC, 1.5A / PoE (IEEE 802.3af)	
Max. Power Consumption		6 W	
Dimensions		165.7 × 69 × 69 mm (6.5 × 2.7 × 2.7 in)	
Weight		0.45 kg (0.992 lb)	
Ingress Protection		IP67	
Vandal Resistance		IK10 for metal casing	
Certification		CE, FCC, RoHS, UKCA compliant	
Web Interface			
Installation Management		Web-based configuration	
Maintenance		Firmware upgrade through Web Browser or Utility	
Access from Web Browser		Live View, Playback, Video Recording, Change Video Quality, Bandwidth Control, Image Snapshot, Digital Zoom, Text Overlay, Image Masking, Intelligent Mark	
Language		Hungarian, English, Spanish, Spanish (LA), Italian, Portuguese, Russian, Polish, Romanian, Hebrew, German, French, Dutch, Norwegian, Czech, Turkish, Japanese, Korean, Traditional Chinese	
Software Applications			
Software Supported		GV-VMS (V17.4.8 with Patch or later, V18.3.4 with Patch or later), GV-Edge Recording Manager (V2.2.8 or later), GV-Control Center (V4.2.1 or later), GV-Recording Server (V2.1.1 with Patch or later)	
Smart Device Access		GV-Eye for iOS and Android (V3.2.0 or later)	
Live Viewing		Web Browser (Edge 120.0.2210.121, Chrome 120.0.6099.200, Firefox 121.0, Safari 11), Mobile App	

Note:

1. Industrial-grade microSD cards are recommended to avoid event recording writing failure.
2. All specifications are subject to change without notice.

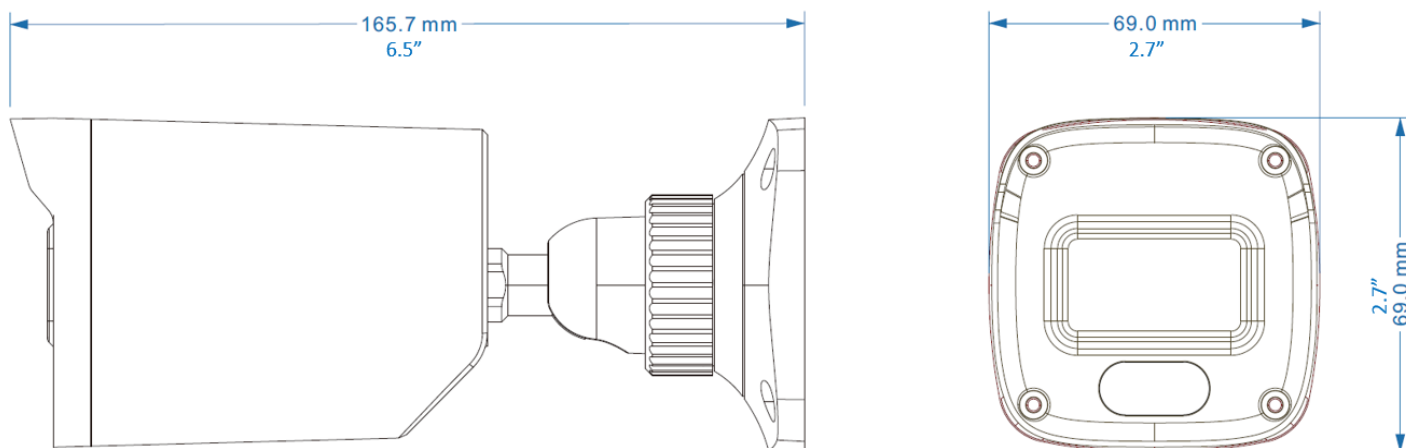
Packing List

1. GV-GBLF2802
2. Waterproof Rubber Set
3. Screw Kit
4. Drill Template Paster
5. Download Guide




Accessories

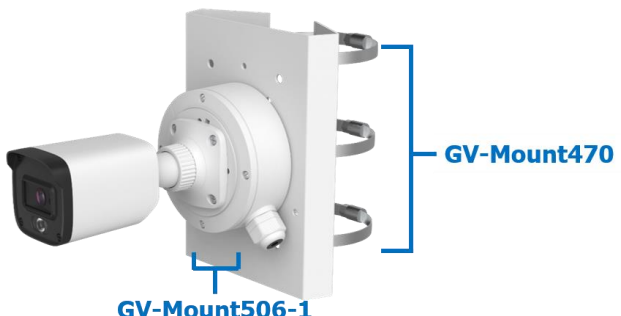
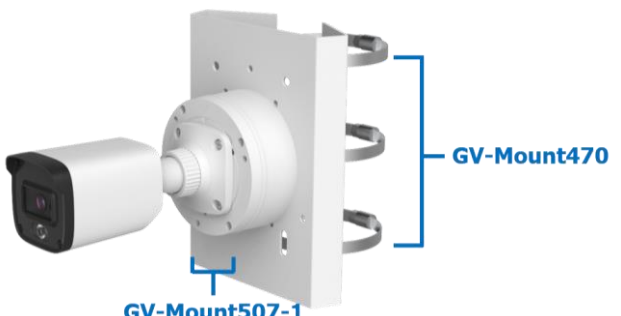
Model No.	Name		Details
GV-Mount211-9 (must be used with Mount507-1)	Wall Mount Bracket		Dimensions: Ø 121 x 148 mm (Ø 4.76 x 5.83 in) Weight: 0.35 kg (0.77 lb)
GV-Mount470 (must be used with Mount211-9, 506-1, or 507-1)	Pole Mount Bracket		Dimensions: 163.3 x 54.5 x 215 mm (6.43 x 2.15 x 8.46 in) Weight: 1.10 kg (2.43 lb)
GV-Mount506-1	Junction Box		Dimensions: 117.9 x 143.3 x 47 mm (4.64 x 5.64 x 1.85 in) Weight: 0.38 kg (0.84 lb)
GV-Mount507	Junction Box		Dimensions: Ø 96 x 38.8 mm (Ø 3.78 x 1.53 in) Weight: 0.16 kg (0.30 lb)
GV-Mount507-1	Junction Box		Dimensions: Ø 111.7 x 55 mm (Ø 4.40 x 2.17 in) Weight: 0.33 kg (0.73 lb)
GV-PA191	PoE Adapter		GV-PA191 is a Power over Ethernet (PoE) adapter designed to provide power to the IP device through a single Ethernet cable.
GV-PA301	Gigabit PoE Adapter		GV-PA301 is a Gigabit Power over Ethernet (PoE) adapter.
GV-POE Switch		GV-POE Switch is designed to provide power along with network connection for IP devices. The GV-POE Switch is available in various models with different numbers and types of ports.	
Power Adapter		Contact our sales representatives for the countries and areas supported.	

Dimensions



Mounting Type

Junction Box Mount	Junction Box Mount	Junction Box Mount	Wall Bracket Mount
GV-Mount506-1	GV-Mount507	GV-Mount507-1	GV-Mount211-9
			

Junction Box Mount	Pole Bracket Mount	Junction Box Mount	Pole Bracket Mount
GV-Mount506-1	GV-Mount470	GV-Mount507-1	GV-Mount470
			

Junction Box Mount	Wall Bracket Mount	Pole Bracket Mount
GV-Mount507-1	GV-Mount211-9	GV-Mount470
