

Blackjack[®] RACK SERVER

Server Powered by DW Spectrum[®] IPVMS

DW-BJRR2Y

NDAA/TAA
COMPLIANT PRODUCT



380-520TB

380-520TB Raw
Storage



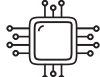
600Mbps
Throughput



Windows 10, Server
& Linux Ubuntu OS



RAID5, RAID6
Options



Dual Intel Xeon
Processors

5 YEAR

Warranty

Summary

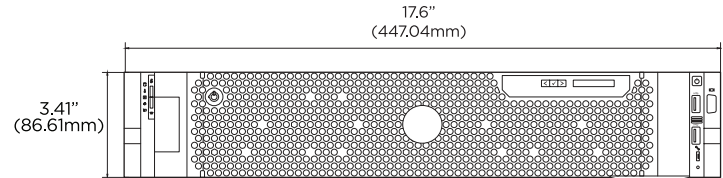
This dual processor Blackjack[®] Rack[™] server is the ultimate solution for recording multiple IP cameras of any resolution at up to 600Mbps throughput. The server is NDAA/TAA compliant, UL listed and includes Windows 10[®] IoT, Windows Server[®] 2019, or Linux[®] Ubuntu[®] OS on a separate mirrored 240GB SSD. The 2U rack-mountable hardware features dual Intel[®] Xeon[®] processors, 32GB memory, up to four (4) 1GB and 10GB network cards and a dual power supply. The Blackjack Rack server comes preloaded with DW Spectrum[®] IPVMS and eight recording licenses, up to 520TB of raw internal storage with RAID5 and RAID6 options and removable hot-swappable drives. The server comes complete with a 5-year, on-site, Next Business Day^{**}, Keep Your Hard Drive warranty to ensure peace of mind.

Features

- Supports all ONVIF conformant IP cameras
- Storage options 380-520TB raw internal storage
- Record and manage single- and multi-sensor IP cameras of any resolution up to 600Mbps throughput
- Hot Swappable HDDs
- OS RAID 1, Data RAID5, 6 options
- Redundant power supply
- 2x 1GB Base-T Ethernet Ports, 2x 10GB SFP+ Fiber
- Windows 10 IoT, Linux Ubuntu, Windows Server 2019 OS options on separate SSD
- Dedicated RAID controller
- Hosting DW Spectrum[®] for setup, configuration, monitoring and recording
- One-time recording license charge, fully transferable between cameras and encoders
- Two (2) 4-channel licenses included for a total of 8 recording channels (DW-SPECTRUMLSC004)
- No annual maintenance fees
- Dual stream recording
- Rail kit included
- USB mouse and keyboard included
- Designed, assembled and tested in the U.S.A.
- UL Listed
- NDAA/TAA compliant
- 5 year warranty, next business day on-site hardware service^{**}, keep your hard drive

Dimensions

Unit: Inch (mm)



Specifications



DESCRIPTION		Blackjack Rack DW-BJRR2YxxT
Included IP licenses		8
Form factor		2U rack mount
Operating system	Windows 10 IoT	BJRR2YxxT
	Linux Ubuntu 20.04	BJRR2YxxTLX
	Windows Server	BJRR2YxxTS
	OS on SSD	2 x 240GB NVMe SSD (RAID1)
CPU		2x Intel Xeon Silver processors
Memory		32GB (4x 8GB)
Ethernet port		2x 1GB Base-T Ethernet Ports, 2x 10GB SFP+ Fiber, iDRAC9 Enterprise
System	Max video storage rate (Mbps)	600Mbps
	Maximum HDD	26x SAS HDDs
Storage	Maximum storage	Max raw 520TB
	RAID options	OS RAID 1, Data RAID5, RAID6
Video-out	Outputs	3 x mini DisplayPort (1 x mini-DP to true HD adapter included)
	Video card	NVIDIA T400 2GB
Preloaded VMS software		DW Spectrum IPVMS
Remote clients		Cross-platform - Windows [®] , Linux Ubuntu [®] and Mac [®]
Mobile apps		iOS [®] and Android [®]
Keyboard and mouse		Included
Rail kit		Included
Power supply		1100W dual power supply*
Operating temperature		41°F-104°F (5°C-40°C)
Operating humidity		5-85% RH
Dimension (WxDxH)		17.6" x 31.9" x 3.41" (447.04 x 810.26 x 86.61mm)
Other certification		NDAA, TAA, UL, FCC and CE
Warranty		5 year warranty with next-day on-site repair ^{**}

Designed and Commissioned in the U.S.A.

* A UPS is recommended.
** After remote diagnosis.



866.446.3595



sales@digital-watchdog.com



www.digital-watchdog.com

REV. 01/24

Copyright © DW. All rights reserved. Specifications and pricing subject to change without notice.

Built for Users.™



Models:

Windows 10 IoT:

Part Numbers	Available Storage, RAID 5
DW-BJRR2Y380T	360TB
DW-BJRR2Y400T	380TB
DW-BJRR2Y420T	400TB
DW-BJRR2Y440T	420TB
DW-BJRR2Y460T	440TB
DW-BJRR2Y480T	460TB
DW-BJRR2Y500T	480TB
DW-BJRR2Y520T	500TB

Part Numbers	Available Storage, RAID 6
DW-BJRR2Y380T6	340TB
DW-BJRR2Y400T6	360TB
DW-BJRR2Y420T6	380TB
DW-BJRR2Y440T6	400TB
DW-BJRR2Y460T6	420TB
DW-BJRR2Y480T6	440TB
DW-BJRR2Y500T6	460TB
DW-BJRR2Y520T6	480TB

Windows Server 2019:

Part Numbers	Available Storage, RAID 5
DW-BJRR2Y380TS	360TB
DW-BJRR2Y400TS	380TB
DW-BJRR2Y420TS	400TB
DW-BJRR2Y440TS	420TB
DW-BJRR2Y460TS	440TB
DW-BJRR2Y480TS	460TB
DW-BJRR2Y500TS	480TB
DW-BJRR2Y520TS	500TB

Part Numbers	Available Storage, RAID 6
DW-BJRR2Y380TS6	340TB
DW-BJRR2Y400TS6	360TB
DW-BJRR2Y420TS6	380TB
DW-BJRR2Y440TS6	400TB
DW-BJRR2Y460TS6	420TB
DW-BJRR2Y480TS6	440TB
DW-BJRR2Y500TS6	460TB
DW-BJRR2Y520TS6	480TB

Linux Ubuntu:

Part Numbers	Available Storage, RAID 5
DW-BJRR2Y380TLX	360TB
DW-BJRR2Y400TLX	380TB
DW-BJRR2Y420TLX	400TB
DW-BJRR2Y440TLX	420TB
DW-BJRR2Y460TLX	440TB
DW-BJRR2Y480TLX	460TB
DW-BJRR2Y500TLX	480TB
DW-BJRR2Y520TLX	500TB

Part Numbers	Available Storage, RAID 6
DW-BJRR2Y380TLX6	340TB
DW-BJRR2Y400TLX6	360TB
DW-BJRR2Y420TLX6	380TB
DW-BJRR2Y440TLX6	400TB
DW-BJRR2Y460TLX6	420TB
DW-BJRR2Y480TLX6	440TB
DW-BJRR2Y500TLX6	460TB
DW-BJRR2Y520TLX6	480TB

