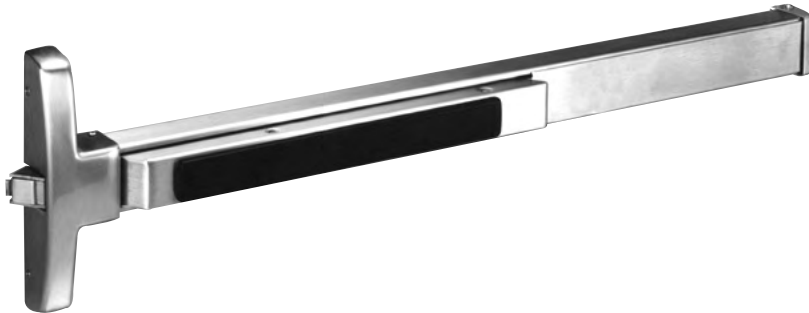


Exit Devices

8500 & AD8500 Series



The 8500 Series Narrow Design Rim Exit Device is designed for narrow stile applications and features a rim bolt for quiet operation and security.

Program	Options	Functions	Rail	Escutcheon	Lever	Finishes
1-Week	12, 16, 43, 60, 70, KD, LC,	8504, 8510, 8513, 8573, 8574, AD8504,	F, G, J	ET, No Trim*	B, J, L, P, MD, ME, MG, MI, MJ, MV, ND, NJ, REM (32D only)	10B, 10BE, 32D
2-Week	SC, AL, 55, 56	AD8510, AD8513				03, 10, 10B, 10BE, 32D

Cylinder Options

- 60 Disposable Construction Core
- 70 Interchangeable Core Disposable Plug
- KD Keyed Different
- LC Less Cylinder
- SC Schlage "C" Keyway

Mechanical Options

- 12 Fire Rated
- 16 Cylinder Dogging
- 43 Flush End Cap
- AL Alarmed Exit
- 55 Request to Exit
- 56 Electric Latch Retraction

Hand

- LHR Left Hand Reverse
- RHR Right Hand Reverse

Rail

- F 33" - 36" (84cm - 91cm)
(No cutting required for 36" (91 cm) door)
- G 43" - 48" (110cm - 122cm)
(No cutting required for 48" (122 cm) door)
- J 37" - 42" (94cm - 107cm)
(No cutting required for 42" (107cm) door)

Exit x Function

- 8504 (ANSI 03) Key allows Lever to Retract Bolts With ET Trim
- 8510 (ANSI 01) Exit Only No Outside Trim
- 8510 (ANSI 02) Exit Only with ET Trim
- 8513 (ANSI 08) Key Locks/Unlocks Trim with ET Trim
- 8573 Electrified ET Trim - Fail Safe Power Off, Unlocks Lever (No Cylinder)
- 8574 Electrified ET Trim - Fail Secure Power Off, Locks Lever (No Cylinder)

Finishes

- 03 Bright Brass
- 10 Dull Bronze
- 10B Oxidized Dull Bronze
- 10BE Dark Oxidized Satin Bronze - Equivalent
- 32D Dull Stainless

Note: Electrified products have a total maximum quantity of 50 locks per order

LA is the standard SARGENT keyway and all cylinders will be 1-bitted unless KD is specified.

Cylinder options are available with 16- option; 04 or 13 function only

ET trims are supplied in 26D, in lieu of 32D

** Available on 8510 and AD8510 only*

