

# C800 Series

## GRADE 1 HEAVY-DUTY CYLINDRICAL LOCKSETS



Energy  
24VDC, 0.145A  
12VDC, 0.290A



Fire-Rated  
3-Hour Fire-Rated



Strength  
ANSI/BHMA  
A156.2



Warranty  
Up To 10 Year  
Limited Warranty

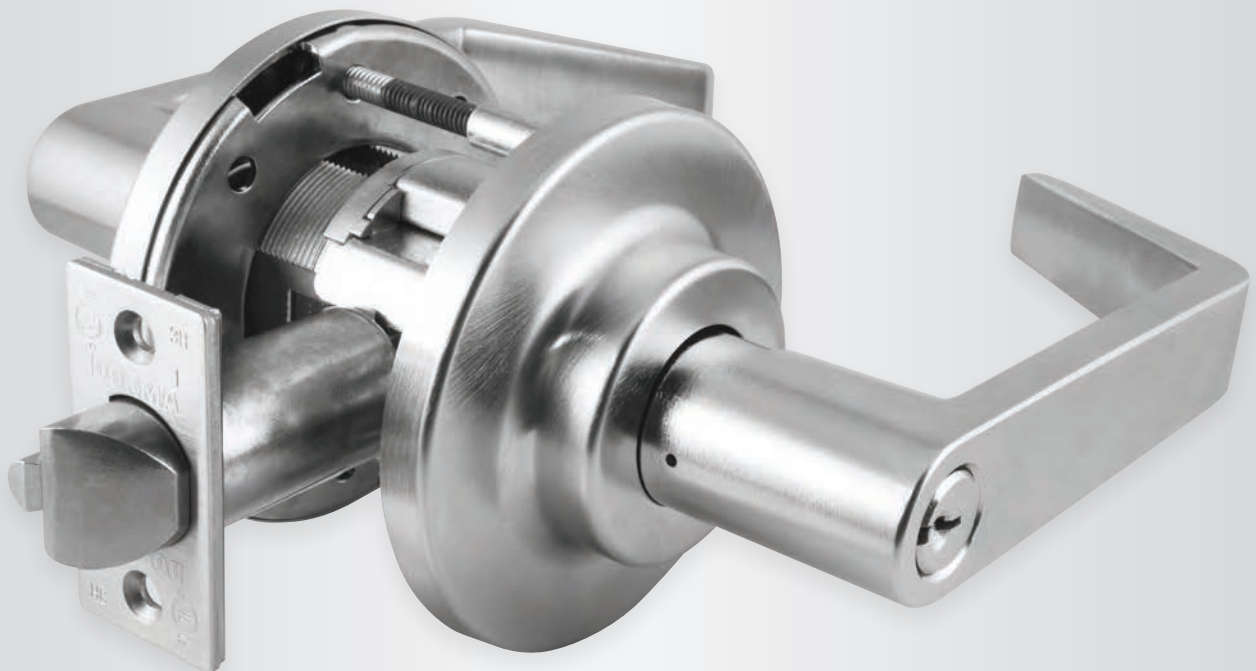


Door Type  
Designed For  
Wood And Hollow  
Metal Doors



Mode  
Fail Safe (EL), Fail Secure (EU),  
and Mechanical Options  
Available

Provides exceptional security, enhanced aesthetics and rugged dependability.



# C800 Series GRADE 1 HEAVY-DUTY CYLINDRICAL LOCKSETS

## HOW TO ORDER C800 SERIES LOCKS

Function	
Faculty Restroom/Hotel <sup>1</sup>	85
Asylum	82
Electrically Unlocked (Fail Secure)	80EU
Electrically Locked (Fail Safe)	80EL
Storeroom	80
Classroom Intruder	77
Corridor	73
Communicating	72
Classroom	70
Store Door	66
Exit/Communicating Classroom	65
Apartment	60
Service Station	55
Entry	53
Entry/Office	50
Hospital Privacy	48
Exit/Communicating Storeroom	44
Privacy, Bedroom or Bath	40
Patio	30
Exit/Communicating Passage	25
Exit	12
Passage/Closet	10
Dummy Trim Two Sides	02
Dummy Trim One Side	01

### Cylinder Type<sup>3</sup>

S	Sargent 10 Line KIL (less cylinder)
D	Conventional Cylinder
L	Less Cylinder
C	SFIC
J	Less SFIC
T	Temporary SFIC
R	Schlage FSIC (less core)

### Finish<sup>5</sup>

630	Satin Stainless (Knob Designs)
626	Satin Chrome
625	Bright Chrome
619 PVD	Satin Nickel
613 PVD	Dark Oxidized Satin Bronze
612 PVD	Satin Bronze
606 PVD	Satin Brass
605 PVD	Bright Brass (Lever Designs)
605	Bright Brass (Knob Designs)

### Standard models include:

- C8 80 D LR E 626 10252 134 5001 1316
- C8 80 RX D LR E 626 10252 134 5001 1316
- C8 80EL D LR E 626 5 10252 134 5001 1316
- C8 80EL D LR E 626 8 10252 134 5001 1316
- C8 80EL RX D LR E 626 5 10252 134 5001 1316
- C8 80EL RX D LR E 626 8 10252 134 5001 1316
- C8 80EU D LR E 626 5 10252 134 5001 1316
- C8 80EU D LR E 626 8 10252 134 5001 1316
- C8 80EU RX D LR E 626 5 10252 134 5001 1316
- C8 80EU RX D LR E 626 8 10252 134 5001 1316

**Note:** Consult factory for lead times on other options



For a complete list and overview of the various options, visit [www.rutherfordcontrols.com/en/products/locksets/c800](http://www.rutherfordcontrols.com/en/products/locksets/c800)

C8	80		D	LR	E	626				RH	10252	134	5001	1316	XXXX
----	----	--	---	----	---	-----	--	--	--	----	-------	-----	------	------	------

Request to Exit<sup>2</sup>

RX

Lever

LR

B

3" Dia. 12VDC

5

AM

TX

RH

Right Hand

134

1-3/4"-2-1/4"

### Product Family

Heavy-Duty Grade 1 Cylindrical Lockset

Lever

LC

C

3-1/2" Dia. 24VDC

8

LH

Left Hand

138

1-3/8"-1-5/8"

Lever

LG

D

3-1/2" Dia. stamped, LOCK

Door Hand

Door Thickness<sup>7,8</sup>

Lever

LT

E

3-1/2" Dia. stepped rose

Security Screws

Lever, Handed

LF

F

3-1/2" Dia. stepped rose stamped, LOCK

Antimicrobial Coatings

Lever, Handed

LV

Rose Design<sup>4</sup>

Knob

KB

Lever/Knob Design

Voltage

Latch Bolt<sup>7</sup>

Lip Length<sup>7</sup>

Strike Options<sup>7</sup>



1. Faculty Restroom/Hotel function available in SC and SE keyway only. Not available in SFIC or prepared for competitor cylinders.
2. Request to exit option only available on C810, C850, C853, C870, C880EL & C880EU lever designs.
3. Consult factory for other Cylinder Options.
4. Rose B applicable to knob designs only. Roses C, D, E, and F applicable to lever designs only. Split design roses not available.
5. For split finishes, available on levers only, consult factory. Specify hand.
6. Available on lever trim, 626 finish only. Consult factory for other finishes.
7. Example shows standard values. Consult factory for other options.
8. Door Thickness Range:  
Lever locks 1-3/4"-2-1/4" without spacers, 1-3/8"-1-5/8" with spacers.  
Knob locks 1-3/8"-2" without spacers or special tools.

## HOW TO ORDER KEYWAYS

### Standard Keyways

#### Keying

- OBIT** — 0-Bitted
- CMK** — Construction Master Keyed
- MKD** — Master Keyed
- NSK** — Non-Stock Keyed
- KA4** — Keyed Alike, Sets of 4
- KA2** — Keyed Alike, Sets of 2
- KD** — Keyed Different

#### SC KD

- SC** — Schlage C
- SE** — Schlage E
- D100** — DORMA SKC

- CA** — Corbin 60
- CD** — Corbin 59A1
- CE** — CorbinRusswin L4
- RA** — Russwin 981
- RB** — Russwin D1
- GA** — Sargent LA
- SF** — Schlage F
- WA** — Weiser E
- YA** — Yale 8
- YG** — Yale GA

**Retrofit Keyways Available  
0-Bitted Only**

### Keyway

### IC Keyways

#### Keying

- TMP** — Temporary Construction Core
- MKD** — Combined (Master Keyed)

#### BA MKD

- BA** — Best A
- BB** — Best B
- BC** — Best C
- BD** — Best D
- BE** — Best E
- BF** — Best F
- BG** — Best G
- BH** — Best H
- BJ** — Best J
- BK** — Best K
- BL** — Best L
- BM** — Best M
- BQ** — Best Q
- D100** — DORMA SKC (7-pin Core only)
- BLK** — Black Construction Core
- BLU** — Blue Construction Core
- GRN** — Green Construction Core

**Specify Color If Required to Match Existing Project**

### Keyway

## HOW TO ORDER LATCH BOLTS

### Latch Throw

- 3/4" Throw Latch — **18**
- 1/2" Throw Latch — **10**

### Latch Type

- 5** — All other functions
- 0** — C810, C840, C844

#### 10 2 5 2

- 2-3/8" Backset — **1**
- 2-3/4" Backset — **2**
- 3-3/4" Backset — **3**
- 5" Backset — **5**

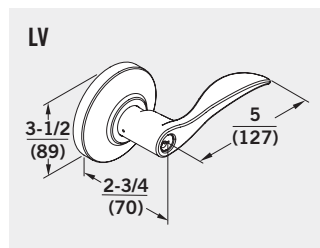
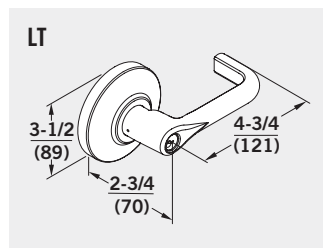
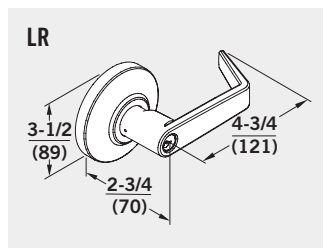
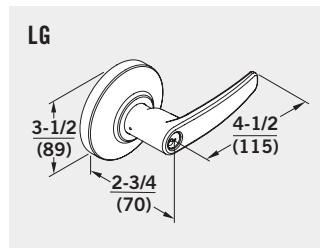
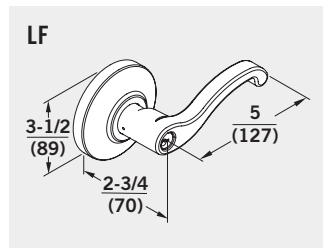
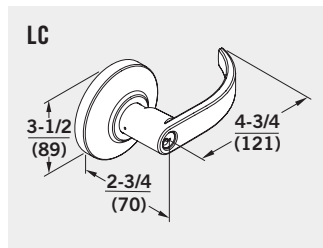
### Backset

### Face

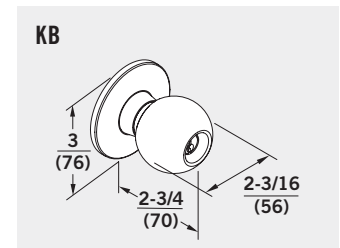
- 0** — 1" Face, Square Corner
- 1** — 1" Face, 1/4" Radius Corner
- 2** — 1-1/8" Face, Square Corner

## TRIM OPTIONS

### Lever Designs



### Knob Design



# C800 Series GRADE 1 HEAVY-DUTY CYLINDRICAL LOCKSETS



LR Lever with C Rose



LG Lever with E Rose



KB Knob IC with B Rose

## Features

- C800 Series locks are easy to install in all swinging doors with ANSI/BHMA Standard A156.115 preparations for cylindrical locks
- C800 Series lever locks are easily adjustable to accommodate doors from 1-3/4"–2-1/4" thick without spacers (1-3/8"–1-5/8" with spacers 660005). Consult the factory for other thicknesses
- C800 Series knob locks will accommodate doors from 1-3/8"–2" thick without spacers or special tools
- Lever sets meet ADA requirements for barrier-free accessibility
- Non-handed for simple installation (excluding LF or LV handed levers)
- Key-in-lever lock is through-bolted for additional strength and security
- Cast stainless steel latch retractor with roller bearings for exceptionally smooth operation and superior strength and durability
- Lock chassis constructed of steel, stainless steel and zinc components for superior strength and corrosion resistance
- Stainless steel latch bolt for superior strength
- Auxiliary deadlocking latch bolt for strength and durability
- Premium PVD (physical vapor deposition) finishes for consistent durable color on 605, 606, 612, 613 and 619
- Electrical requirement: 24VDC, 0.145 & 12VDC, 0.290A
- Request-to-exit signaling switch: 250VAC, 1A, 22AWG wire leads on lever locks
- 2 year limited warranty on electrified locksets
- 10 year limited warranty on mechanical locksets

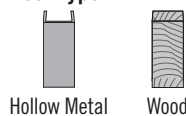
## Accessories

- Electrified hinges
- Flex loops
- Pin and ball transfers

## Applications

- Educational facilities
- Municipal buildings
- Health care facilities
- Retail outlets
- Office complexes
- Hotels
- Apartments
- Churches
- Airports
- Warehouses

## Door Type



## Certifications & Testing

- ANSI/BHMA Certified to A156.2 Series 4000 Grade 1
- Tested to 3.5 million cycles by an independent laboratory
- Meets A117.1 accessibility code and ADA requirements for barrier-free accessibility
- UL/cUL – UL 10C Positive Pressure
  - » All C800 Series locks are listed 3 hour fire rated
  - » Locks with 1/2" throw latch bolts are listed for A label and lesser class doors, 4'0" x 8'0" maximum per leaf
- California State Reference Code (formerly title 19, California State Fire Marshal standard), all levers with returns, return to within 1/2" (12 mm) of door face

