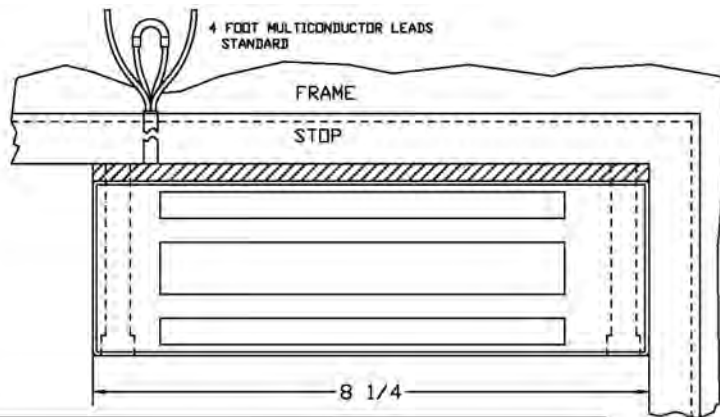
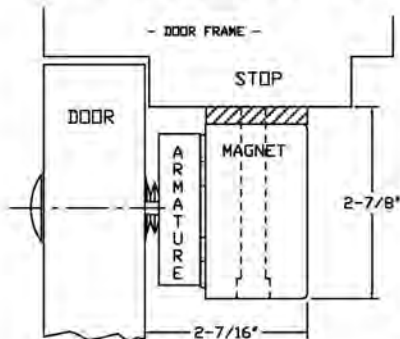
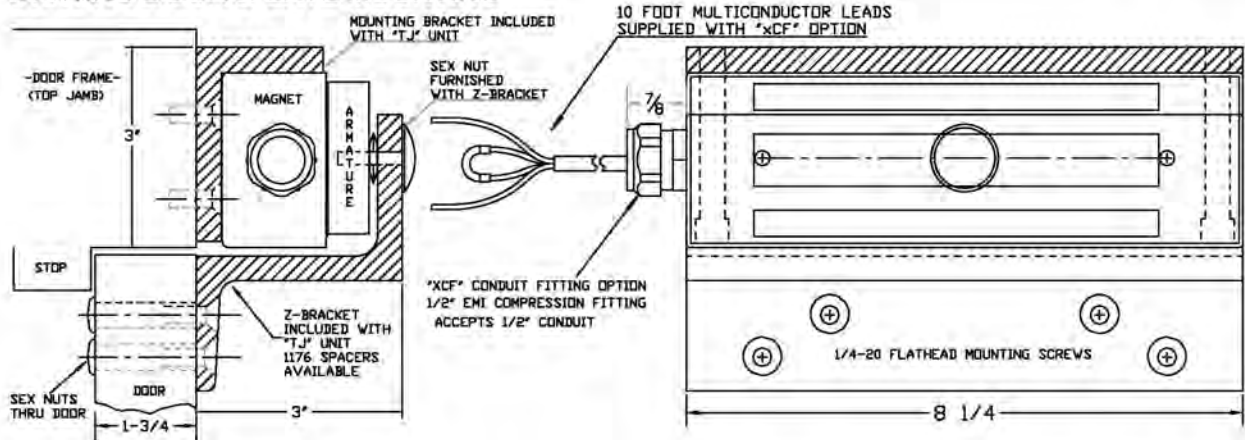


1000 SERIES ELECTRO-MAGNETIC LOCKS

OUTSWING DOOR MOUNTING



INSWING DOOR & GATE MOUNTING



Specifications:

Physical Size

- #1000 Lock - 8-1/4" long x 1-1/2" deep x 2-7/8" high (includes mounting plate)
- #1000 Armature - 8-1/2" long x 2-1/4" high x 5/8" thick

Electrical

- 170mA @24 VDC
- 340mA @12 VDC
- Optional DPS Switch Contacts
- 100mA @30 VDC Max.Rated

In-swinging Doors & Gates

- TJ1000** - 1000 series lock with top jamb mounting hardware.
- 1099-00** Kit converts any 1000 to TJ1000

Options:

- xD** Integral Door Position Switch SPDT weather proof sealed
- xCF** Conduit Fitting 1/2" EMT Compression type accepts 1/2" conduit comes with 10' leads

Gate/Inswing Conversion Kit:

1099-00 Conversion kit includes (1) Z-Bracket and (1) angle bracket with all mounting hardware needed to convert a standard 1000 lock into a TJ-1000 for swinging gates or inswing doors

Gate mounting:

1000xCF Specifies Conduit Fitting
When installing these locks on exterior swing and slide gates, #1000xCF locks should be specified to receive units with the conduit fitting. This will afford protection to the power wiring for the lock. The 1099-00 Conversion Kit may also be used for swinging gate applications.

Finish:

1000 series locks are encased in a brushed Stainless Steel housing suitable for interior or exterior applications. Electro-magnet face and armature are electroless nickel plated for high resistance to rust and corrosion.

Wiring:

The 1000 series locks are supplied with a multiconductor, 20 gauge power cable 48" long. The order in which these leads are connected to the DC power source determines the operating voltage of the unit. (xCF option comes with 10' leads)
The optional DPS switch has 3 color coded conductors.

Installation:

Typically these locks are mounted on outswinging doors using the mounting plate accompanying the unit. This mounting plate has elongated slots for ease of alignment and threaded holes for secure attachment of the lock to the plate. An access hole is also provided in the mounting plate to accommodate the power cable.
The TJ-1000 units are supplied with an angle bracket prepared for attachment to the face of the door frame. A "Z" bracket is also furnished for mounting the armature plate to the door.