

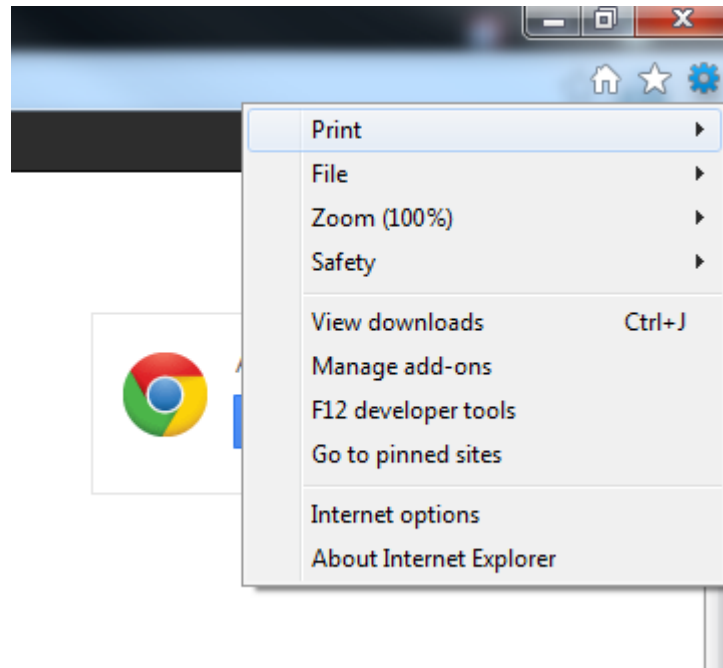


OTHER TUTORIALS



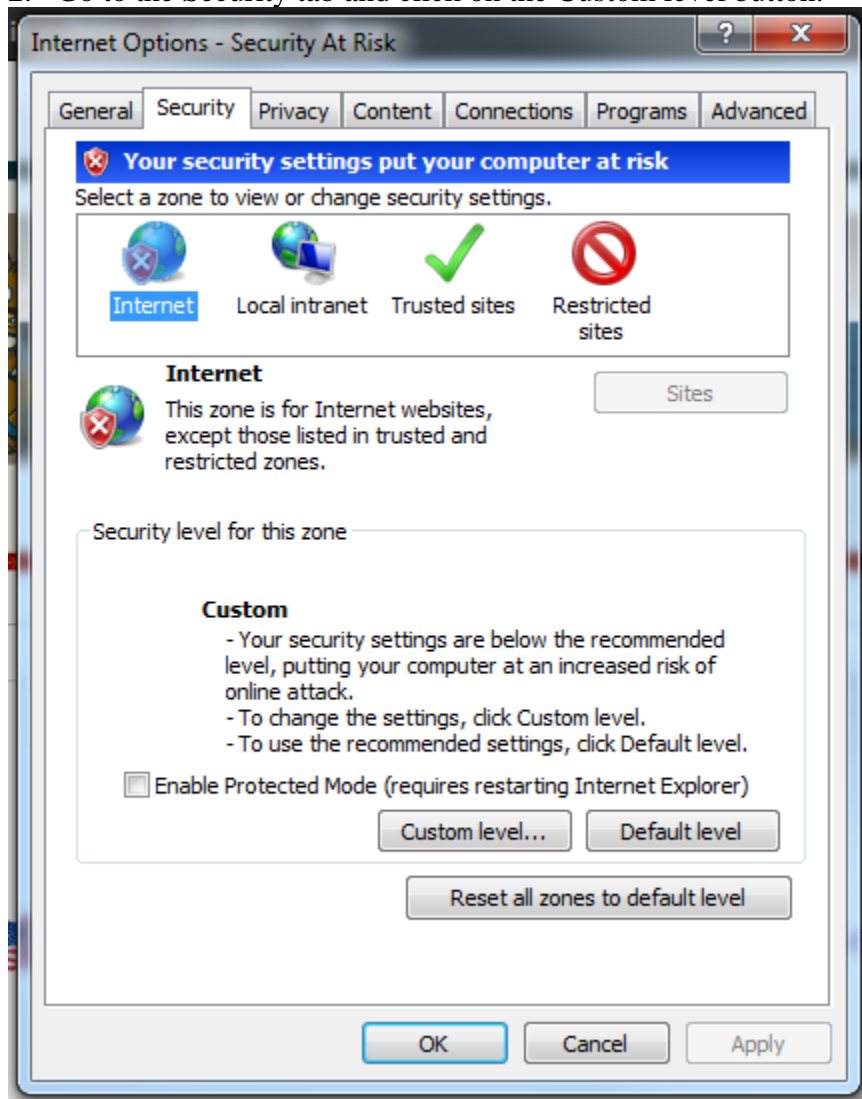
How to setup ActiveX for DVR, NVR, IP camera.

1. Start by clicking on tools (gear in the image) and going to Internet options



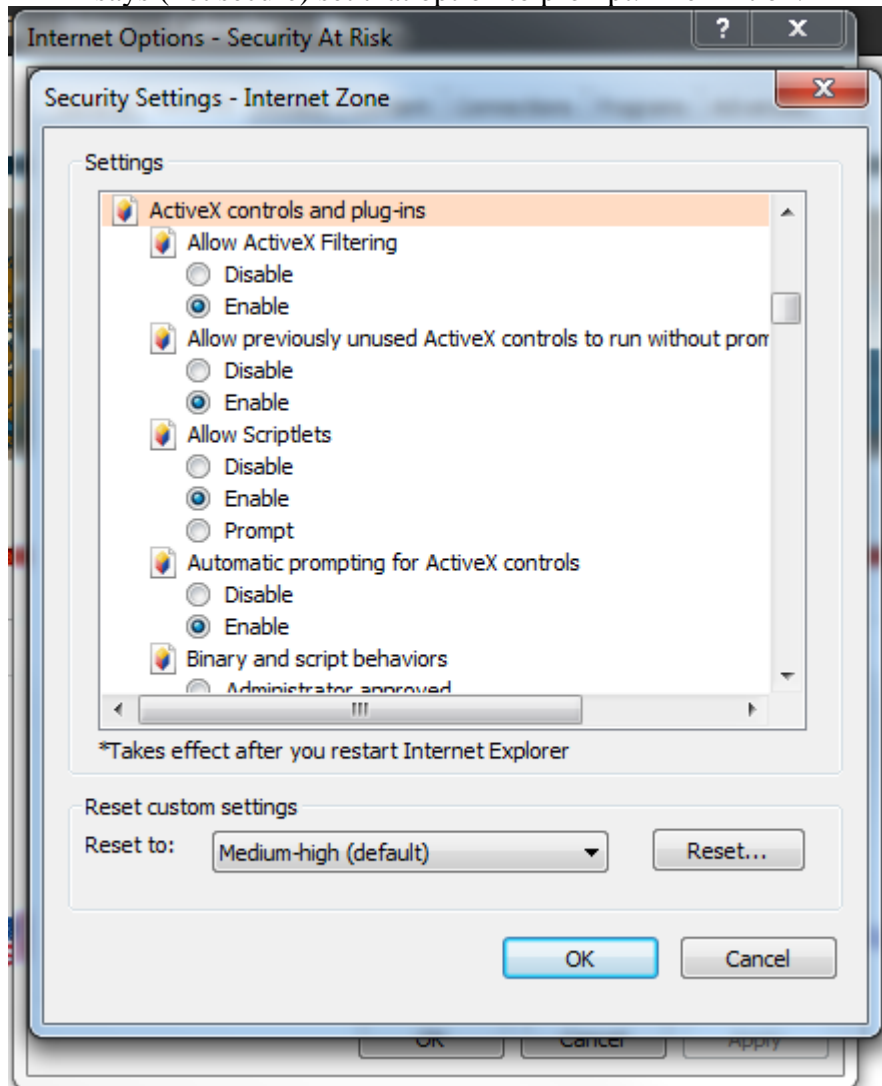
-Next page-

2. Go to the Security tab and click on the Custom level button.



-Next page-

3. Locate the ActiveX control settings and make sure that they are all enabled. If the enable option says (not secure) set that option to prompt. Then hit ok.



-Next page-

4. Next click on the green check mark that says Trusted sites. Next click on the Sites button. Add your DVRs IP to your list of trusted sites. (when adding your IP make sure that the “Require server verification” check box at the bottom is unchecked. After adding you IP click close.
5. Next click on the Custom level button and locate the ActiveX control settings and make sure that they are all enabled. If the enable option says (not secure) set that option to prompt. Then hit ok. You ActiveX controls are now all enabled, and you will be able to view your DVR online.

-Images for steps 4 and 5 are on the following pages-

