

GV-CMS Series

Quick Start Guide V8.5.8.0





© 2013 GeoVision, Inc. All rights reserved.

Under the copyright laws, this manual may not be copied, in whole or in part, without the written consent of GeoVision.

Every effort has been made to ensure that the information in this manual is accurate. GeoVision, Inc. makes no expressed or implied warranty of any kind and assumes no responsibility for errors or omissions. No liability is assumed for incidental or consequential damages arising from the use of the information or products contained herein. Features and specifications are subject to change without notice.

GeoVision, Inc.

9F, No. 246, Sec. 1, Neihu Rd.,

Neihu District, Taipei, Taiwan

Tel: +886-2-8797-8377

Fax: +886-2-8797-8335

<http://www.geovision.com.tw>

Trademarks used in this manual: *GeoVision*, the *GeoVision* logo and *GV* series products are trademarks of GeoVision, Inc. *Windows* and *Windows XP* are registered trademarks of Microsoft Corporation.

September 2013

Contents

Naming and Definition	iii
Preface.....	1
Chapter 1 Center V2	1
1.1 Minimum System Requirements	2
1.2 Installing Center V2	4
1.3 The Center V2 Window	5
1.4 Creating a Subscriber Account.....	8
1.5 Connecting GV-System to Center V2.....	10
1.6 Enabling Live View	12
1.7 Recording and Playing Back	14
1.8 Enabling Two-Way Audio	16
Chapter 2 Dispatch Server	19
2.1 Minimum System Requirements	20
2.2 Installing Dispatch Server.....	22
2.3 The Dispatch Server Window	23
2.4 Creating a Subscriber Account.....	25
2.5 Starting Dispatch Server.....	27
2.6 Connecting Center V2 to Dispatch Server	29
2.7 Connecting GV-System to Dispatch Server	31
Chapter 3 Vital Sign Monitor	33
3.1 Minimum System Requirements	34
3.2 Installing VSM.....	36

3.3	The VSM Window	37
3.4	Creating a Subscriber Account.....	40
3.5	Starting VSM.....	41
3.6	Connecting GV-System to VSM	42
Chapter 4	GV-GIS	444
4.1	Minimum System Requirements	455
4.2	Installing GV-GIS	488
4.3	The GV-GIS Window	500
4.4	Creating A Host Account	544
4.5	Starting the GV-GIS	588
4.6	Connecting a Mobile Host to GV-GIS.....	59
4.7	Connecting a Fixed Host to GV-GIS	611

Naming and Definition

GV-System	GeoVision Analog and Digital Video Recording Software. The GV-System also refers to GV-Multicam System, GV-NVR System, GV-DVR System and GV-Hybrid DVR System at the same time.
------------------	---

Preface

GeoVision Center Monitoring System series includes Center V2, Dispatch Server, VSM (Vital Sign Monitor), Control Center and GIS. The Quick Start Guide introduces **Center V2**, **Dispatch Server**, **VSM** and **GIS**. For Control Center, please refer to *GV-Control Center Quick Start Guide*.

Chapter 1 Center V2

1.1 Minimum System Requirements

Before installation, make sure your computer meets the following minimum requirements:

Standard Version (Connects up to 5 subscribers & 160 channels)

OS	32-bit	Windows XP / Vista / 7 / 8 / Server 2008
	64-bit	Windows 7 / 8 / Server 2008 / Server 2012
CPU	Pentium 4, 3.0 GHz with Hyper-Threading	
Memory	2 x 512 MB Dual Channels	
Hard Disk	1 GB	
Graphic Card	AGP or PCI-Express, 1024 x 768, 32-bit color	
DirectX	9.0c	

Professional Version (Connects up to 500 subscribers & 800 channels)

OS	32-bit	Windows XP / Vista / 7 / 8 / Server 2008
	64-bit	Windows 7 / 8 / Server 2008 / Server 2012
CPU	Core i7 2600, 3.4 GHz	
Memory	8 GB Dual Channels	
Hard Disk	1 GB	
Graphic Card	AGP or PCI-Express, 1024 x 768, 32-bit color	
DirectX	9.0c	
Hardware	Internal or External GV-USB Dongle	

Note: We do not recommend installing GV-Center V2 Pro and GV-Control Center modules on the same PC. Running GV-Center V2 (Pro) and GV-Control Center on the same PC may result in CPU overload error or system failure.

Software License for Professional Version

Free License	N/A
Maximum License	500 subscribers, 800 channels
Increment for each license	N/A
Combination	<ol style="list-style-type: none">1. Center V2 Pro2. Center V2 Pro + VSM
Note: It is recommended to use the internal GV-USB Dongle to have the Hardware Watchdog function which restarts the PC when Windows crashes or freezes.	

1.2 Installing Center V2

Standard Version

1. Insert the Software DVD to your computer. It runs automatically and a window appears.
2. Select **Install GeoVision Primary Applications**.
3. Click **GV-Center V2**, and follow the on-screen instructions.

Professional Version

1. Connect the GV-USB Dongle to the computer.
2. Insert the Software DVD to your computer. It runs automatically and a window appears.
3. To install the USB device driver, select **Install or Remove GeoVision GV-Series Driver** and select **Install GeoVision USB Device Drivers**.
4. To install GV-Center V2, select **Install GeoVision Primary Applications**.
5. Click **GV-Center V2** and follow the on-screen instructions.

1.3 The Center V2 Window

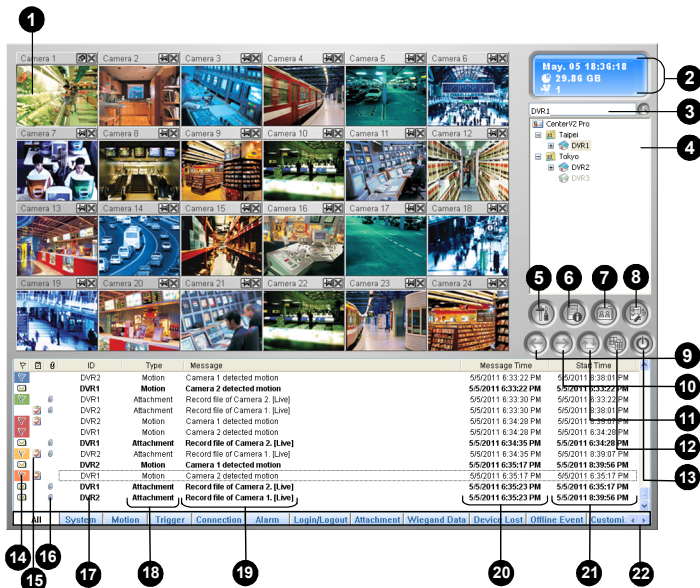


Figure 1-1

The controls on the Center V2 window:


No.	Name	Description
1	Monitoring Window	Displays live video.
2	Status Panel	Indicates the date, time, remaining disk space, and the total number of online channels versus available channels.
3	Find A Subscriber	Type the desired ID in the Current Subscriber field and click this button to search.
4	Subscriber List	Displays subscribers' ID names and online status. Blue Icon: Indicates the subscriber is online. Gray Icon: Indicates the subscriber is off-line. Alarm Icon: Indicates either motion has been detected or the I/O has been triggered at the subscriber's site.
5	Tools	Accesses Event Log, Event List, audio and microphone control, SMS Server configuration, and short message notification.
6	Host Information	Displays the connection status of subscribers.
7	Accounts	Adds, deletes or modifies subscriber accounts.
8	Preference Settings	Brings up these options: System Configure, Event Log Settings, Notification, Password Setup, E-mail Setup, Customize Alarm Report, SMS Setup, I/O Device, Automatic Failover Support and Version Information.
9	Previous Page	Displays the previous page of camera views.
10	Next Page	Displays the next page of camera views.
11	Refresh Channel	Refreshes the connection status.

No.	Name	Description
12	Split Mode	Displays screens in different numbers of divisions per page.
13	Exit	Closes or minimizes the Center V2 window.
14	Flag	Flags an event for later reference.
15	Clipboard	Displays the Alarm Report dialog box.
16	Clip	Indicates an event coming with an attachment. Double-click the event to open the attached video file.
17	ID	Indicates a subscriber's ID.
18	Event Type	Indicates the event type: Alarm, Attachment, Connection, Login/Logout, Motion, System, and Trigger.
19	Message	Indicates associated information for each event type.
20	Message Time	Indicates when Center V2 receives an event.
21	Start Time	Indicates when an event happens at the subscriber's site.
22	Event Category	Sorts events into categories.

For details, see Chapter 1, *GV-CMS User's Manual* on the Software DVD.

1.4 Creating a Subscriber Account

Create at least one subscriber account before starting Center V2 services.

1. On the Center V2 window, click the **Accounts** button . This window appears.

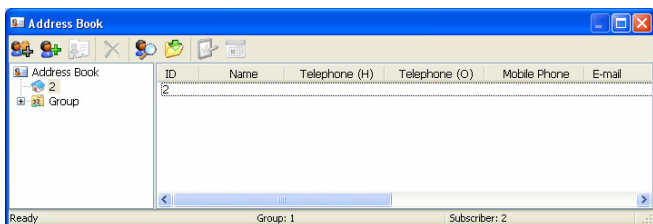




Figure 1-2

2. Click the **Add A Group** button  to create a group.
3. Click the **Add A Subscriber** button . This dialog box appears.

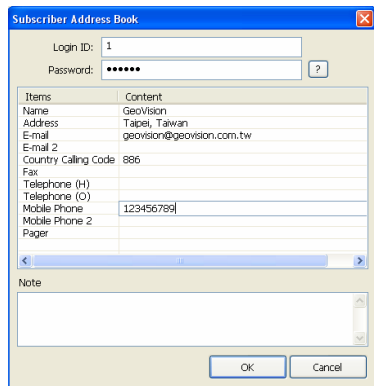


Figure 1-3

4. Type a **Login ID** and **Password**. These will be ID and password for the subscriber to log into the Center V2.
5. Type the subscriber's contact information in the rest of the fields (optional).
6. Click **OK** to save the above settings. This dialog box appears.

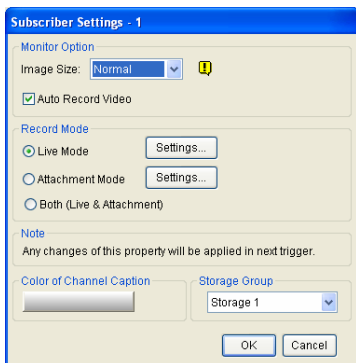



Figure 1-4

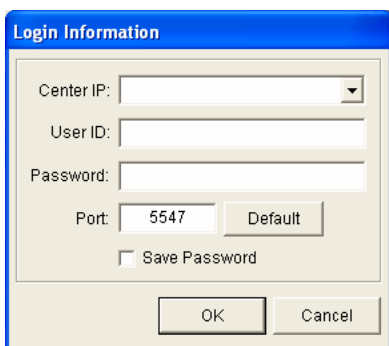
7. Assign a Storage Group using the drop-down list. See *Recording Settings, 1.15 System Configuration* in the *GV-CMS User's Manual* on the Software DVD.
8. Click **OK**. The subscriber account is created.

For details, see *Creating a Subscriber Account*, Chapter 1, *GV-CMS User's Manual* on the Software DVD.

1.5 Connecting GV-System to Center V2

You need to configure the GV-System to access the Center V2 remotely. A GV-System can connect up to two Center V2 servers simultaneously.

1. On the main screen of GV-System, click the **Network** button , and select **Connect to Center V2**. This dialog box appears.



The dialog box titled "Login Information" contains the following fields and controls:

- Center IP: A dropdown menu.
- User ID: A text input field.
- Password: A text input field.
- Port: A text input field containing "5547" and a "Default" button.
- Save Password
- OK and Cancel buttons at the bottom.

Figure 1-5

2. Type the IP address, ID and password of the Center V2. Modify the default communication port if necessary. Click **OK**. This dialog box appears.

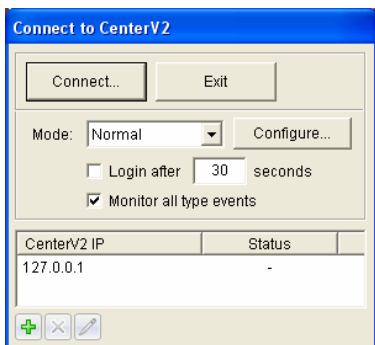




Figure 1-6

3. To establish connection to the second Center V2, click the **Add Center V2** icon  and repeat steps 1 and 2.
4. Click the **Connect** button to start. When the connection is established, Center V2 will start receiving live images, recordings and events from the subscriber.

1.6 Enabling Live View

Live views are popped up on the Center V2 when events and motion are detected at the subscriber. You can also enable live views to be shown constantly on the Center V2.

1. The GV-System needs to grant the Center V2 the privilege to allow live viewing. On the GV-System, click the **Network** button ; select **Connect to Center V2**, click **Configure**, and select **Advanced Settings** and click the **Camera** tab. The Advanced Settings dialog box appears.
2. Select **Allow Center V2 to View Live Camera**.

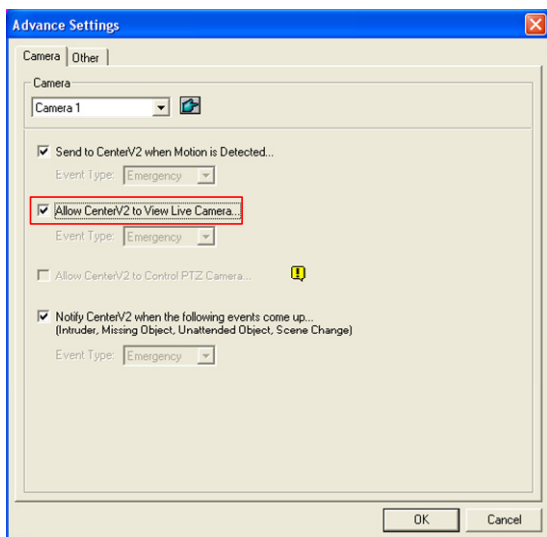



Figure 1-7

3. To apply the settings to all the cameras, click .
4. Connect the GV-System to the Center V2.
5. On the Center V2 window, right-click the camera on the Subscriber List and select **Live View**.

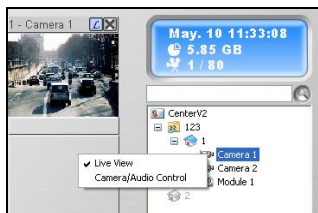


Figure 1-8

1.7 Recording and Playing Back

Recording upon Motion or Events

By default, the Center V2 will record any events and motion detected at the subscriber. When the video is recorded, a message labeled with [Live] appears on the Event List.



ID	Type	Message	Message Time	Start Time
2	Motion	Camera 1 detected motion	8/5/2010 10:36:19 AM	8/5/2010 10:36:19 AM
2	Attachment	Record file of Camera 1. [Live]	8/5/2010 10:36:25 AM	8/5/2010 10:36:19 AM

Figure 1-9

Note: The default path of recorded files is :\\Center V2\Data\subscriberLive

Recording Manually

You can also start recording manually and instantly when you see any suspicious live images.

1. Enable live view. See *1.6 Enabling Live View*.
2. To start recording, move your cursor to the live view and click the icon  on the channel heading.
3. To stop recording, move your cursor to the live view and click the icon  on the channel heading.
4. When the video is recorded, a message labeled with [Manual] appears on the Event List.

ID	Type	Message	Message Time	Start Time
2	Attachment	Record file of Camera 1. [Manual]	8/5/2010 10:36:11 AM	8/5/2010 10:35:55 AM

Figure 1-10

Note: The default path for recordings started manually is :\\Center V2\Data\subscriberManual

Playing Back Videos

To play back the recording, double-click the message with attachment on the Event List for instant playback.


	ID	Type	Message	Message Time	Start Time
📎	2	Attachment	Record file of Camera 1. [Live]	7/29/2010 7:15:59 PM	7/29/2010 7:15:34 PM
	2	Motion	Camera 1 detected motion	7/29/2010 7:15:59 PM	7/29/2010 7:15:59 PM
📎	2	Attachment	Record file of Camera 1. [Live]	7/29/2010 7:17:30 PM	7/29/2010 7:15:59 PM
	2	Motion	Camera 1 detected motion	7/29/2010 7:17:32 PM	7/29/2010 7:17:32 PM
📎	2	Attachment	Record file of Camera 1. [Live]	7/29/2010 7:18:17 PM	7/29/2010 7:17:32 PM
	2	Motion	Camera 1 detected motion	7/29/2010 7:18:18 PM	7/29/2010 7:18:18 PM
📎	2	Attachment	Record file of Camera 1. [Live]	7/29/2010 7:18:45 PM	7/29/2010 7:18:18 PM
	2	Motion	Camera 1 detected motion	7/29/2010 7:18:50 PM	7/29/2010 7:18:50 PM

Figure 1-11

For details, see *Playback*, Chapter 1, *GV-CMS User's Manual* on the Software DVD.

1.8 Enabling Two-Way Audio

Two-way communications are allowed between Center V2 server and its subscribers. To enable two-way communication between the Center V2 server and the subscriber:

1. The GV-System needs to grant Center V2 the privilege to allow two-way communications. On the GV-System, click the **Network** button , select **Connect to Center V2**, click **Configure**, select **Advanced Settings**, and click the **Other** tab. The Advanced Settings dialog box appears.
2. Under the Audio section, select **Allow Audio-Out to Center V2** and **Allow Audio-In from the Center V2**.

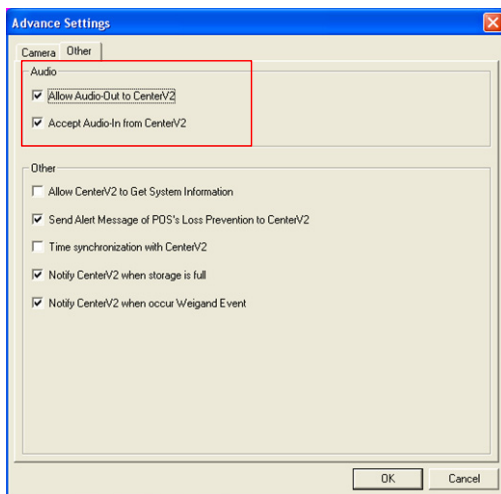


Figure 1-12




3. Connect the GV-System to the Center V2.
4. Move your cursor to the live view. The **Microphone**  and **Audio** icons  appear at the bottom left corner.



Figure 1-13

5. To speak to a subscriber, click the **Microphone** icon  to turn it on. The control panel appears.

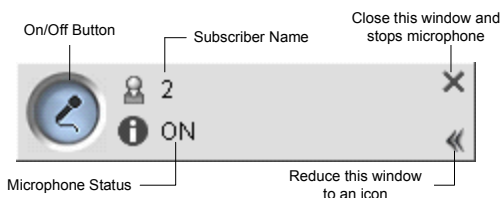



Figure 1-14

6. On the live view, click the **Audio** icon  to turn it on. The control panel appears.

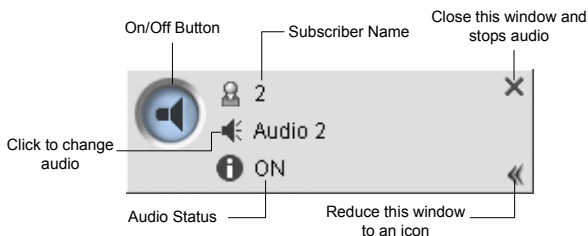



Figure 1-15

7. To switch to another subscriber, click the subscriber icon  on the Microphone or Audio control panel, type the subscriber ID in the Search Account dialog box and click **GO**.

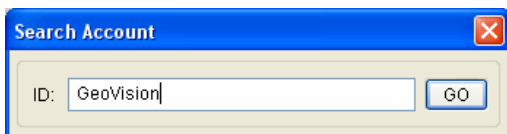


Figure 1-16

Chapter 2 Dispatch Server

2.1 Minimum System Requirements

Before installation, make sure that your computer meets the following minimum requirements:

Standard Requirements

OS	32-bit	Windows XP / Vista / 7 / 8 / Server 2008,
	64-bit	Windows 7 / 8 / Server 2008 / Server 2012
CPU	Pentium 4, 3.0 GHz with Hyper-Threading	
Memory	2 x 512 MB Dual Channels	
Hard Disk	1 GB	
Graphic Card	AGP or PCI-Express, 800 x 600 (1280 x 1024 recommended), 32-bit color	
DirectX	9.0c	
Hardware	Internal or External GV-USB Dongle	

Advanced Requirements (Connects to 100 DVR subscribers or more)

OS	32-bit	Windows XP / Vista / 7 / 8 / Server 2008
	64-bit	Windows 7 / 8 / Server 2008 / Server 2012
CPU	Core 2 Duo E6600, 2.4 GHz	
Memory	2 x 1 GB Dual Channels	
Hard Disk	1 GB	
Graphic Card	AGP or PCI-Express, 800 x 600 (1280 x 1024 recommended), 32-bit color	
DirectX	9.0c	
Hardware	Internal or External GV-USB Dongle	

Software License

Free License	N/A
Max. License	50 Center V2 servers 25000 subscribers from Center V2 servers
Increment for each license	N/A
Optional Combinations	1. Dispatch 2. Dispatch + VSM
Dongle Type	Internal or external
Note: It is recommended to use the internal GV-USB Dongle to have the Hardware Watchdog function which restarts the PC when Windows crashes or freezes.	

2.2 Installing Dispatch Server

1. Connect the GV-USB Dongle to the computer.
2. Insert the Software DVD to your computer. It runs automatically and a window appears.
3. To install the USB device driver, select **Install or Remove GeoVision GV-Series Driver** and select **Install GeoVision USB Device Drivers**.
4. To install GV-Dispatch Server, select **Install GeoVision Primary Applications**.
5. Click **GV-Dispatch Server** and follow the on-screen instructions.

2.3 The Dispatch Server Window

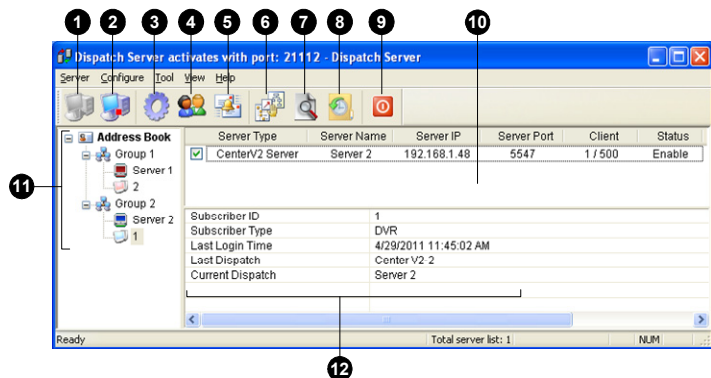


Figure 2-1




The controls on the Dispatch Server window:

No.	Name	Description
1	Start Server	Starts Dispatch Sever.
2	Stop Server	Stops Dispatch Sever.
3	Server Setting	Configures Dispatch Sever.
4	Account	Adds, edits and deletes the accounts of Center V2 Servers and subscribers.
5	Subscriber Notification Setting	Sets the alert conditions and methods.
6	Manual Dispatch	Enables manual distribution of subscribers.
7	Stop/Start Query Center V2 Event	Specifies an event query.
8	Real-time Center V2 Event	Views real-time events occurring on Center V2 Servers.

No.	Name	Description
9	Exit	Closes the Dispatch Server window.
10	Center V2 Status	This part lists the connected Center V2 Servers and their status. Subscribers can be distributed to the ticked Center V2 Servers. Unchecking will disable the distribution service.
11	Tree View	The list displays all created group folders, servers and subscribers. You can right-click any online subscriber to call up Subscriber Address Book and Camera/Audio Control Panel . For details on Camera/Audio Control Panel for live view, see <i>4.6 Viewing Live Video</i> . Blue Icon: The server / subscriber is online. Red Icon: The server / subscriber is offline.
12	Subscriber Status	Displays the subscriber information such as subscriber ID, type, last login time, last dispatch and current dispatch. Click the desired subscriber from the tree view to display this information.

2.4 Creating a Subscriber Account

Create at least one subscriber before starting the services. Dispatch Server can serve up to **50** Center V2 servers and **25,000** Center V2's subscribers simultaneously.

1. On the Dispatch Server Window, click the **Account** button . The Address Book window appears.
2. Click the **Add a Group** button  to create a group.
3. Click the **Add a Server** button  to create a Center V2 server account. A server icon pops out. Rename the server to match the location name created for the Center V2 server.

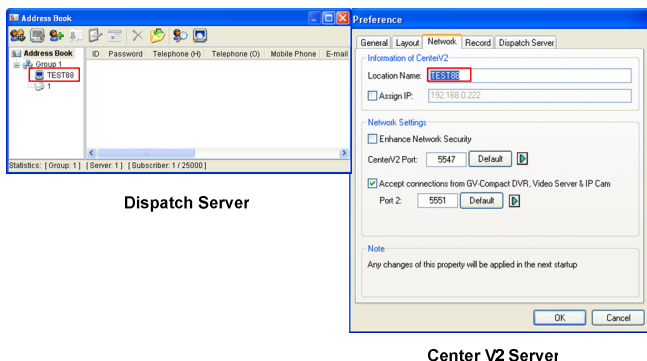

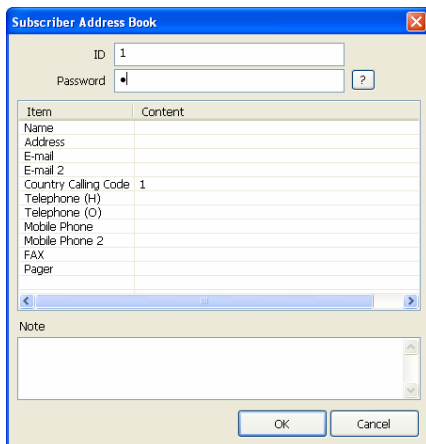


Figure 2-2

4. Click the **Add a Subscriber** button  to create a subscriber account. The Subscriber Address Book dialog box appears.

5. Create an ID and password for the subscriber. The ID and password will be used when the Center V2's subscriber wants to log into the Dispatch Server.



Subscriber Address Book

ID: 1

Password: [] ?

Item	Content
Name	
Address	
E-mail	
E-mail 2	
Country Calling Code	1
Telephone (H)	
Telephone (O)	
Mobile Phone	
Mobile Phone 2	
FAX	
Pager	

Note: []

OK Cancel

Figure 2-3

6. Click **OK** to finish.

Note:

1. You can create sub-groups beneath a group; every sub-group can only include one Center V2 server; every server can include up to 500 subscribers.
 2. When one Center V2 server stops running, its own subscribers will be distributed to the Center V2 servers available at the same or to a higher level of the hierarchical file system.
-

2.5 Starting Dispatch Server

After subscriber accounts are created, you are ready to establish connections to the Dispatch Server. Follow the steps below.

1. On the Dispatch window, click **Configure** and select **Setting**. The Dispatch Server Setting dialog box appears.
2. Type an **Identification Code**. This code will be used for connecting Center V2 Server to Dispatch Server.

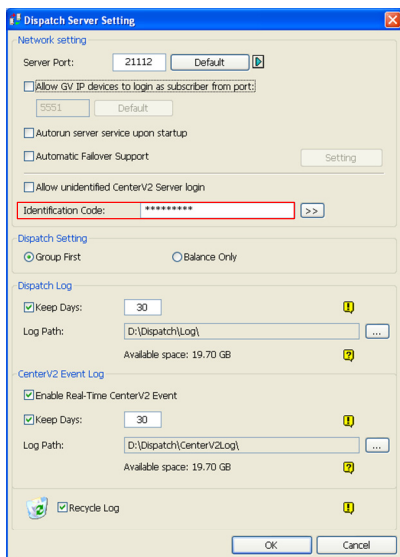




Figure 2-4

3. Connect Center V2 to Dispatch Server. See 2.6 *Connecting Center V2 to Dispatch Server*.

4. Connect GV-System to Dispatch Server. See *2.7 Connecting GV-System to Dispatch Server*.
5. Click the **Start Server** button  on the Dispatch Server window to start the service.

2.6 Connecting Center V2 to Dispatch Server

You need to configure the Center V2 to connect to the Dispatch Server.

1. On the Center V2 window, click the **Preference Settings** button , select **System Configure**, and click the **Dispatch Server** tab. The Preference dialog box appears.
2. Click the **Dispatch Server** tab. Type the **Identification Code**, IP address, and the port of the Dispatch Server.

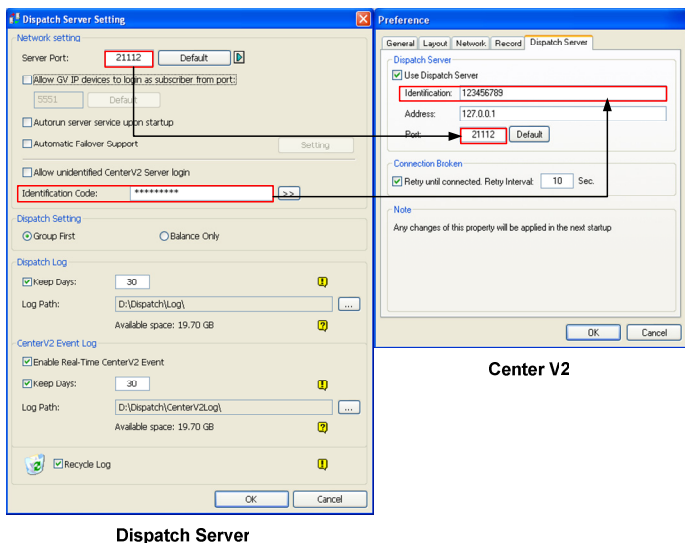


Figure 2-5

3. Click **OK**.

4. Restart the Center V2. Without this step, the Center V2 will not connect to the Dispatch Server.
5. When the Center V2 connects successfully to the Dispatch Server,
 - Center V2 Server icon turns blue, and
 - Center V2 status information appears on the Dispatch window.

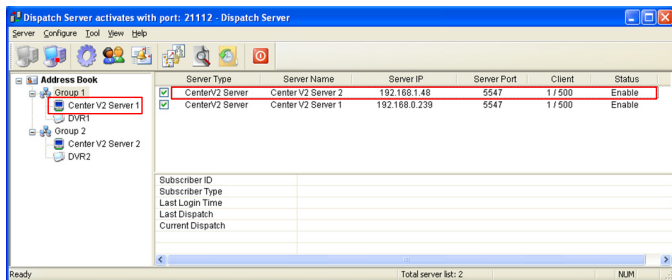



Figure 2-6

2.7 Connecting GV-System to Dispatch

Server

The GV-System, Center V2's subscriber, also needs to be configured to connect to Dispatch server.

1. On the main screen of GV-System, click the **Network** button , and select **Connect to Center V2**. The Login Information dialog box appears.
2. Type the IP address of the Dispatch Server, and the user ID and password created on the Dispatch Server. See Figure 2-3 in 2.4 *Creating a Subscriber Account*.

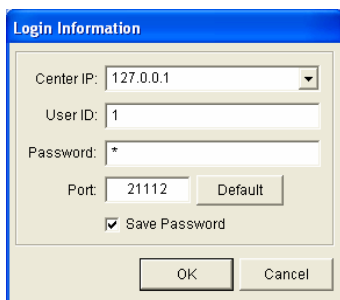


Figure 2-7 shows the Login Information dialog box. The dialog has a blue title bar with the text "Login Information". It contains several input fields: "Center IP" with a dropdown menu showing "127.0.0.1", "User ID" with a text box containing "1", "Password" with a text box containing a single asterisk, and "Port" with a text box containing "21112" and a "Default" button. There is a checked checkbox for "Save Password". At the bottom are "OK" and "Cancel" buttons.

Figure 2-7

3. Change the port number from 5547 (Center V2 port) to **21112** (Dispatch Server port).

- Click the **OK** button. This dialog box appears.

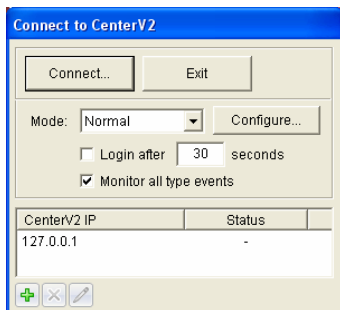


Figure 2-8

- Click the **Connect** button to connect to the Dispatch Server.
- When the GV-System connects successfully to the Dispatch Server,
 - the subscriber icon turns blue,
 - client count increases, and
 - subscriber information is accessible by clicking the subscriber on the device tree.

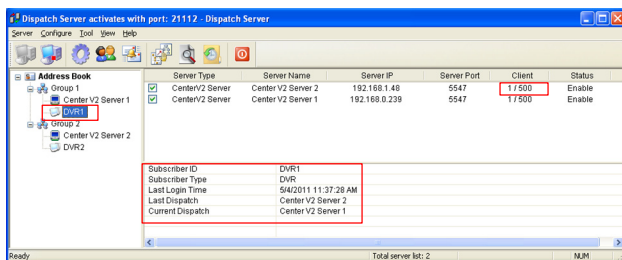


Figure 2-9

Chapter 3 Vital Sign Monitor

3.1 Minimum System Requirements

Before installation, make sure your computer meets the following minimum requirements:

Standard Requirements

OS	32-bit	Windows XP / Vista / 7 / 8 / Server 2008
	64-bit	Windows 7 / 8 / Server 2008 / Server 2012
CPU	Pentium 4, 3.0 GHz with Hyper-Threading	
Memory	2 X 512 MB Dual Channels	
Hard Disk	1 GB	
Graphic Card	AGP or PCI-Express, 800 x 600 (1280 x 1024 recommended), 32-bit color	
DirectX	9.0c	
Hardware	Internal or External GV-USB Dongle	

Advanced Requirements (Connects to 1000 DVR subscribers or more)

OS	32-bit	Windows XP / Vista / 7 / 8 / Server 2008
	64-bit	Windows 7 / 8 / Server 2008 / Server 2012
CPU	Core 2 Duo E6600, 2.4 GHz	
Memory	2 X 1 GB Dual Channels	
Hard Disk	1 GB	
Graphic Card	AGP or PCI-Express, 800 x 600 (1280 x 1024 recommended), 32-bit color	
DirectX	9.0c	
Hardware	Internal or External GV-USB Dongle	

Software License

Free License	N/A
Max. License	1000 subscribers
Increment for each license	N/A
Optional Combination	<ol style="list-style-type: none"> 1. VSM 2. VSM + Control Center 3. VSM + Control Center + Video Wall 4. VSM + Center V2 5. VSM + Dispatch Server
Dongle Type	Internal or external
<p>Note: It is recommended to use the internal GV-USB Dongle to have the Hardware Watchdog function which restarts the PC when Windows crashes or freezes.</p>	

To ensure the quality of downloading when multiple GV-Systems connect to the VSM, see the list below for the recommended bandwidth:

Number of Subscribers	Recommended Bandwidth
100	512 Kbps
500	2 Mbps
1000	4 Mbps

3.2 Installing VSM

1. Connect the GV-USB Dongle to the computer.
2. Insert the Software DVD to your computer. It runs automatically and a window appears.
3. To install the USB device driver, select **Install or Remove GeoVision GV-Series Driver** and select **Install GeoVision USB Device Drivers**.
4. To install the Vital Sign Monitor, select **Install GeoVision Primary Applications**.
5. Click **GV-Vital Sign Monitor** and follow the on-screen instructions.

3.3 The VSM Window

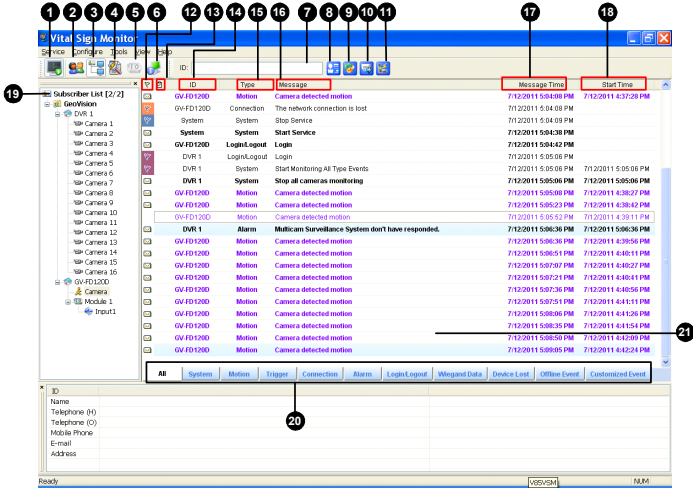


Figure 3-1


The controls on the VSM window:

No.	Name	Description
1	Start / Stop Service	Starts or stops the VSM service.
2	Account	Adds, deletes or modifies subscribers.
3	Show / Hide Subscriber List	Shows and hides the Subscriber List.
4	View Event Log	Launches Event Log Browser.
5	Force Output	Activates manually output devices to alert the VSM operator.
6	View Subscriber Information	Accesses the subscriber's storage and monitoring information.
7	ID	Enter an ID for further search.
8	View Subscriber Address Book	Enter an ID, and then click this button to view the subscriber's address book.
9	View Subscriber Status	Enter an ID, and then click this button to see the subscriber's status.
10	Send E-Mail	Sends e-mails to subscribers.
11	Send Short Message	Sends SMS to subscribers.
12	Flag	Flags an event for later reference.
13	Clipboard	Displays the Alarm Report dialog box.
14	ID	Indicates the subscriber's ID.
15	Type	Indicates the event types, including System, Connection, Login/Logout, Motion, Trigger, and Alarm.
16	Message	Indicates associated information for each event type.
17	Message Time	Indicates the time of receiving event messages.
18	Start Time	Indicates the subscriber's time when sending out the event message.

No.	Name	Description
19	Subscriber List	<p>Indicates the number of online subscribers and displays the ID and status.</p> <p>Blue Icon: Indicates the subscriber is online.</p> <p>Gray Icon: Indicates the subscriber is offline.</p> <p>Alarm Icon: Indicates either motion has been detected or the I/O has been triggered at the subscriber's site.</p>
20	Event Categories	<p>Events can be sorted into these categories: System, Motion, Trigger, Connection, Alarm, Login/Logout, Wiegand Data, Device Lost and Offline Event. To sort the events, click View from the menu bar and select My Favorite Events.</p>
21	Event List	<p>Displays a list of events occurred.</p>

3.4 Creating a Subscriber Account

The VSM can serve up to **1,000** subscribers at a time. Create at least one subscriber before starting the VSM services.

1. On the VSM widow, click the **Account** button . This window appears.

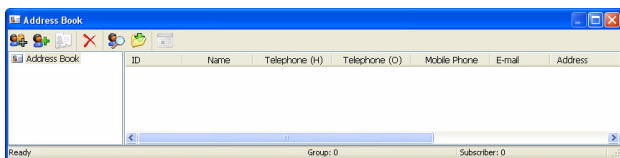





Figure 3-2

2. Click the **Add A Group** button  to create a group folder.
3. Click the **Add A Subscriber** button . The Subscriber Address Book dialog box appears.
4. Type a login ID and a password. These will be the ID and Password for the subscriber to log into the VSM.
5. Type the subscriber's contact information in the rest of fields (optional).
6. Click **OK**. The subscriber account is created.


3.5 Starting VSM

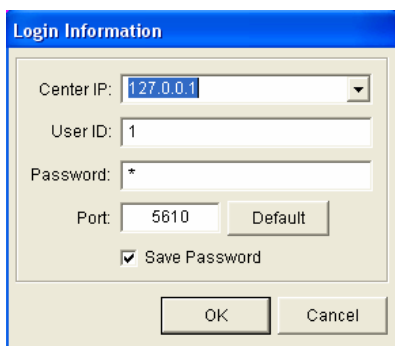
After subscriber accounts are created, you are ready to establish connections to the VSM. Follow the steps below.

1. Click the **Start/Stop Service** button  on the VSM window.
2. Connect GV-System to VSM. See 3.6 *Connecting GV-System to VSM*.

3.6 Connecting GV-System to VSM

You need to configure the GV-System to access the VSM remotely. A GV-System can connect up to **five** VSM servers simultaneously.

1. On the main screen of GV-System, click the **Network** button , and select **Connect to VSM**. This dialog box appears.



The dialog box titled "Login Information" contains the following fields and controls:

- Center IP: A dropdown menu with "127.0.0.1" selected.
- User ID: A text input field containing "1".
- Password: A text input field containing a single asterisk (*).
- Port: A text input field containing "5610" and a "Default" button.
- Save Password: A checked checkbox.
- OK and Cancel buttons at the bottom.

Figure 3-3

2. Type the IP address, User ID and Password of VSM. Modify the default communication port if necessary. Click **OK**. This dialog box appears.

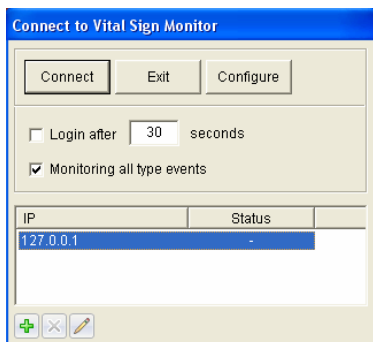



Figure 3-4

3. To connect the GV-Systems to more VSM, click the **Add Vital Sign Monitor** button  and repeat steps 1 and 2.
4. Click the **Connect** button to start. When the connection is established, VSM can start receiving alert messages, computer alarms and output alarms.

Chapter 4 GV-GIS

4.1 Minimum System Requirements

Before installation, make sure your computer meets the following minimum requirements:

Note: The GV-GIS supports the following Map API (Application Program Interface): Google Maps V2, Google Maps V3, Microsoft Virtual Earth and OpenStreetMap. For some Map API, users may need to purchase the API Premium Key. Since these Map APIs are third-party applications, users are responsible for following their terms and conditions.

Standard Requirements

		10 Mobile-Host Map Views	10 Mobile-Host Map Views with up to 10 Megapixel Live Views
OS	32-bit	Windows XP / Vista / 7 / Server 2008	
	64-bit	Windows 7 / Server 2008	
CPU		Pentium 4, 3.0 GHz with HT	Core 2 Quad 8300, 2.5 GHz
Memory		2 x 512 MB Dual Channels	2 x 1 GB Dual Channels
Hard Disk		1 GB	
Graphic Card		AGP or PCI-Express, 800 x 600 (1280 x 1024 recommended), 32-bit color	
DirectX		9.0c	
Browser		Internet Explorer 7.x	
Software		.Net Framework 3.5	
Hardware		External or Internal GV-GIS Dongle	
Note: The .Net Framework can be found in the Software DVD.			

Advanced Requirements

		16 Mobile-Host Map Views	16 Mobile-Host Map Views with up to 16 Megapixel Live Views
OS	32-bit	Windows XP / Vista / 7 / Server 2008	
	64-bit	Windows 7 / Server 2008	
CPU		Pentium 4, 3.0 GHz with HT	Core i5-750, 2.67 GHZ
Memory		2 x 1 GB Dual Channels	
Hard Disk		1 GB	
Graphic Card		AGP or PCI-Express, 800 x 600 (1280 x 1024 recommended), 32-bit color	
DirectX		9.0c	
Browser		Internet Explorer 7.x	
Software		.Net Framework 3.5	
Hardware		Internal or External GV-GIS Dongle	
Note: The .Net Framework can be found in the Software DVD.			

Note: The minimum system requirements detailed here are collected based on GV-IPCAM 1.3MP devices, and may vary when connected to different IP device models.

Software License

Free License	N/A
Max. License	500 mobile hosts
Increment for each license	1, 3, 5, 10 or 10 plus an increment of 5 up to a total of 500 vehicle connections
Optional Combinations	<ol style="list-style-type: none"> 1. GIS 2. GIS + AVP 3. GIS + VSM 4. GIS + VSM + AVP
Dongle Type	Internal or external
<p>Note: It is recommended to use the internal GV-USB Dongle to have the Hardware Watchdog function which restarts the PC when Windows crashes or freezes.</p>	

4.2 Installing GV-GIS

Before installing the GV-GIS, you need to install the USB dongle driver and .Net Framework first. Follow the steps below to install those programs.

1. Insert the Software DVD to your computer. It runs automatically and a window appears.
2. To install USB device driver, select **Install or Remove GeoVision GV-Series Driver**, and select **Install GeoVision USB Device Drivers**.
3. To install .NET Framework, select **Download Microsoft .NET Framework 3.5**.
4. To install GV-GIS, select **Install GeoVision Primary Applications**.
5. Click **GV-GIS** and follow the on-screen instructions.
6. The first-time user will be prompted for a License Agreement. Read through the license terms before you click **I understand and agree** to continue.

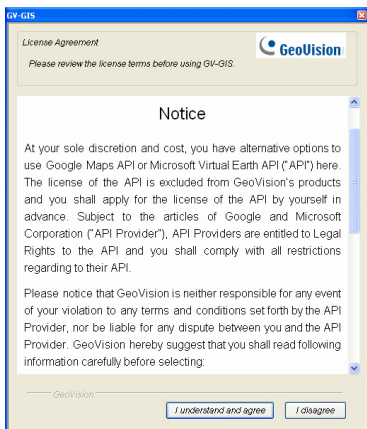


Figure 4-1

- From the "Please Select a Map API" drop-down list, select a Map API (Application Program Interface).

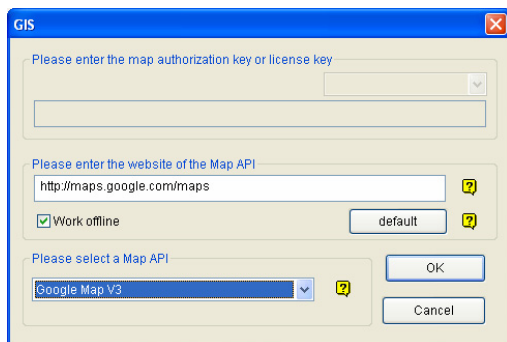


Figure 4-2

- Click **Submit** to open the main screen.

Note: For Google Maps V2, you need to sign up for an API key from the Google website (<http://code.google.com/apis/maps/signup.html>), and enter the API key in the **Please enter the map authorization key or license key** field.

4.3 The GV-GIS Window

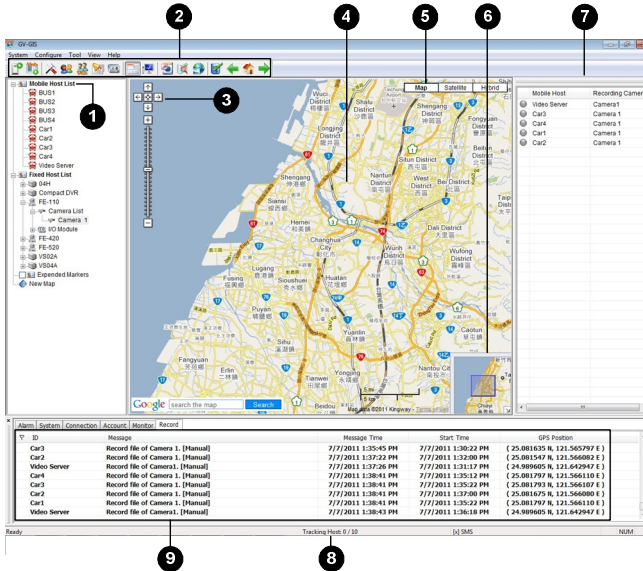


Figure 4-3

The controls on the GV-GIS window:

No.	Name	Description
1	Host List	Includes these types of folders: Mobile Host List, Fixed Host List, Expanded Markers, and New Map.
2	Toolbar	See Toolbar later.
3	Navigation Controls	Use these to pan, return to the last result, and zoom.
4	Map	Displays the tracking map, E-Map and query results.

No.	Name	Description
5	Views	Click these to display different views, including aerial images and street level imagery.
6	Overview Map	Shows the location of current map view.
7	Manual Record List	Displays the manual recording status of Mobile Hosts and the cameras. To display Monitor List or Map Event list, click View on the GIS window and select from the menu.
8	Tracking Host Indicator	Indicates the number of connected mobile hosts. Take this Tracking Host: 3 / 50 for example. Three (3) mobile hosts are connected to the GV-GIS while the GV-GIS support a maximum of 50 mobile hosts.
9	Event List	See Event List later.

Event List

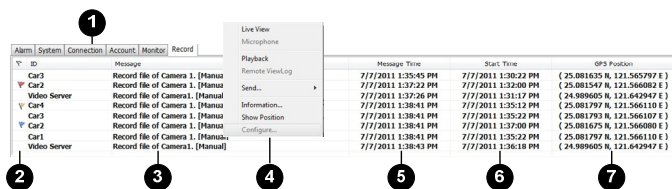


Figure 4-4

No.	Name	Description
1	Event Type	Include these types of events: Alarm, System, Connection, Account, Monitor and Record.
2	Flag	Flag an event for later reference.
3	Message	Indicate associated information for each event type.

No.	Name	Description
4	Selection Menu	Right-clicking a message in the Alarm, Connection, Monitor or Record tab allows you to instantly access some useful functions.
5	Message Time	Indicates the time that the GV-GIS receives an event.
6	Start Time	Indicates the time that an event happens at the host.
7	GPS Position	Indicates GPS position of hosts at Start Time.

Toolbar



Figure 4-5

No.	Name	Description
1	Start/Stop Service	Start or stop the GV-GIS services.
2	Start/Stop Web Service	Enable or disable the access to GV-GIS's Web interface.
3	System Configuration	Configure the system. See <i>System Configurations</i> Chapter in the <i>GV-GIS User's Manual</i> on the Software DVD.
4	Account	Configure host accounts. See <i>Creating Host Accounts</i> , <i>Getting Started</i> Chapter in the <i>GV-GIS User's Manual</i> on the Software DVD.
5	Web Account	Configure user accounts for accessing GV-GIS's Web interface.

No.	Name	Description
6	Notification Setting	Configure which event to send notifications when it happens.
7	Local I/O Device Control	Open the list of available I/O devices on your system.
8	Event List	Open or close the Event List on the main screen.
9	Monitor List	Open or close the Monitor List on the main screen.
10	Event Log Browser	Search for log events. See the Event Log Browser Chapter in the GV-GIS User's Manual on the Software DVD.
11	Range Query	Search for places and devices.
12	Track List	Track addresses of multiple mobile hosts in real time.
13	Map Setting	Configure the settings for E-Map icons. See the Creating an E-Map, Advanced Operation Chapter in the GV-GIS User's Manual on the Software DVD.
14	Up One Level Map	Display the previous map.
15	Map Home	Display the tracking map.
16	Down One Level Map	Display the next map.

4.4 Creating A Host Account

There are two types of hosts: **mobile host** and **fixed host**. Mobile hosts are devices that are equipped with GPS receivers and are installed in vehicles. Fixed hosts are devices that are not equipped with GPS receivers and are set up at fixed locations. Create hosts according to your needs.

Creating a Mobile Host

1. On the toolbar, click the **Account** button . This window appears.

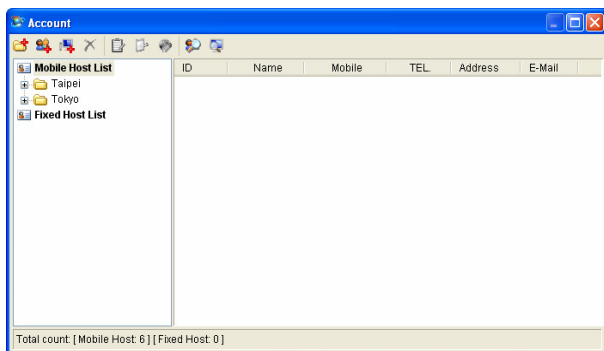




Figure 4-6



2. Click the **Add A Group** button  to create a group folder if necessary.
3. Click the **Add A Mobile Host**  button to create a host account. The Subscriber Information dialog box appears.


- Assign an ID and Password for the host to log onto the GV-GIS.

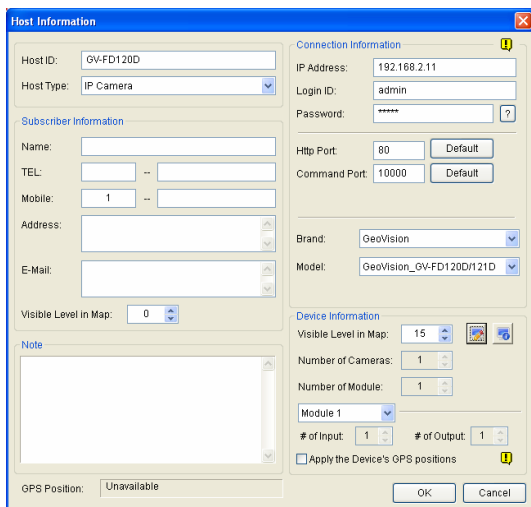
Figure 4-7

- Other entries such as Name, TEL, Mobile, Address and E-Mail are optional.
- A host icon should appear on the Host List and the map.

Creating a Fixed Host

- On the toolbar, click the **Account** button . The Account window appears.
- Click the **Add A Group** button  to create a group folder if necessary.

3. Click the **Add A Fixed Host** button  to create a fixed host account. The dialog box appears.




The screenshot shows the 'Host Information' dialog box with the following fields and values:

- Host ID:** GV-FD120D
- Host Type:** IP Camera
- Subscriber Information:**
 - Name: (empty)
 - TEL: (empty)
 - Mobile: 1
 - Address: (empty)
 - E-Mail: (empty)
 - Visible Level in Map: 0
 - Note: (empty text area)
 - GPS Position: Unavailable
- Connection Information:**
 - IP Address: 192.168.2.11
 - Login ID: admin
 - Password: *****
 - Http Port: 80 (Default)
 - Command Port: 10000 (Default)
 - Brand: GeoVision
 - Model: GeoVision_GV-FD120D/121D
- Device Information:**
 - Visible Level in Map: 15
 - Number of Cameras: 1
 - Number of Module: 1
 - Module 1 (selected)
 - # of Input: 1
 - # of Output: 1
 - Apply the Device's GPS positions

Buttons: OK, Cancel

Figure 4-8


4. In the Host Information dialog box,
 - A. Name the host in the **Host ID** field and select a device type from the **Host Type** drop-down list.
 - B. In the Connection Information section, type **IP Address**, **Login ID** and **Password** to log onto the host. Use the default communication ports, or modify port values if necessary.
 - C. You may need to select **Brand** and **Model**.
 - D. In the Device Information section, click the **Update Information** button  to update the number of cameras and I/O modules installed on the host.
 - E. Subscriber Information and Note are optional entries.

5. An icon appears on the host list. Drag this icon to the desired location on the map.

For details on creating host accounts, see *Creating Host Accounts, Getting Started* Chapter in the *GV-GIS User's Manual* on the Software DVD.

4.5 Starting the GV-GIS

After the host accounts are created, you are ready to start the GV-GIS service. Follow the steps below.

1. On the toolbar, click the **Start/Stop Service** button  to start the GV-GIS service.
2. Connect the hosts to GV-GIS. For mobile hosts, see *4.6 Connecting a Mobile Host to GV-GIS* later. For fixed hosts, see *4.7 Connecting a Fixed Host to GV-GIS* later.

4.6 Connecting a Mobile Host to GV-GIS

You can have GV-Video Server, GV-Compact DVR, GV-System and GV-Recording Server/GV-Video Gateway as mobile hosts. Configure your hosts to connect to GV-GIS.

Before You Start

Before connecting your mobile host to GV-GIS, make sure:

- The GPS receiver is installed to the mobile host and the GPS function is activated.
- Mobile internet connection on the mobile host is enabled.

Connecting GV-Video Server or GV-Compact DVR:

1. On the Web interface of GV-Video Server or GV-Compact DVR, select **GV-GIS**.

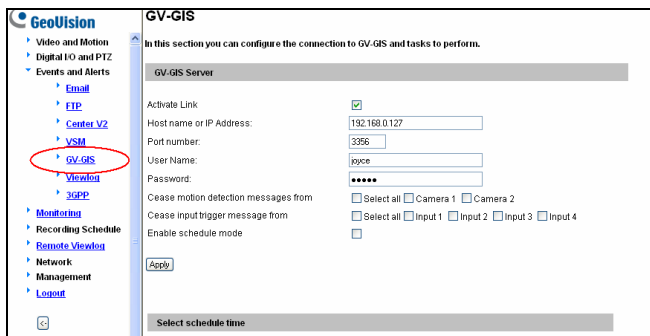


Figure 4-9

2. Select **Activate Link**.
3. Type the IP address or domain name of the GV-GIS.
4. Keep **Port number** as default, or change it if necessary.

5. Type the **User Name** and **Password** to log onto the GV-GIS. These entries must match the ID and Password created on the GV-GIS. See *Creating a Mobile Host* in *4.4 Creating Host Accounts*.
6. Click **Apply** to connect. When the connection is established:
 - the message “Status: Connected. Connected time: xxx” will be displayed at the bottom of the configuration page.
 - the mobile host icon will move to its actual location on the map.

Connecting GV-System

You can create a mobile host for GV-System on the GV-GIS to track the locations of GV-System, and for GV-Video Server and GV-Compact DVR connected to GV-System. For the settings on GV-System, see *GPS Settings on GV-System*, Appendix D, in the *GV-GIS User's Manual* on the Software DVD.


Connecting GV-Recording Server/GV-Video Gateway

You can create a mobile host for GV-Recording Server/GV-Video Gateway on the GV-GIS to track the locations of GV-Video Server and GV-Compact DVR connected to GV-Recording Server/GV-Video Gateway. For the settings on GV-Recording Server/GV-Video Gateway, see *GV-Recording Server User's Manual*.

4.7 Connecting a Fixed Host to GV-GIS

You can have GV-System, GV-Video Server, GV-Compact DVR, GV-IP Camera or GV-IP Speed Dome as fixed hosts.

Connecting GV-System

On the main screen, click the **Network** button , select **Control Center Server** and select **Control Center Service**.

Connecting GV-Video Server, GV-Compact DVR, GV-IP Camera, GV-IP Speed Dome

These IP devices do not need to be set up for connection.