



Upgrading GV-IPCAM H.264 of firmware V1.06 or earlier to firmware V1.09

Article ID: GV15-12-04-03-t

Release Date: 04/03/2012

Applied

The issue applies to the following GV IP cameras with **firmware V1.06 or earlier**:

- Box Camera: GV- BX120D / 130D / 220D / 320D / 520D
- Bullet Camera: GV-BL120D / 130D / 220D / 320D
- Vandal Proof Dome: GV-VD120D / 220D / 320D
- Fixed Dome: GV-FD120D / 220D / 320D
- Mini Fixed Dome: GV-MFD120 / 130 / 220 / 320 / 520
- Fisheye Camera: GV-FE420 / 421 / 520 / 521
- Cube Camera: GV-CB120 / 220, CBW120 / 220

Symptom

When upgrading GV IP cameras listed above with firmware V1.06 or earlier to firmware V1.09, firmware upgrade cannot be completed successfully.

Note: When firmware upgrade is unsuccessful, rebooting the camera will restore the camera back to normal operation.

Solution

To upgrade to firmware V1.09, use GV-IP Device Utility V8.5.3 to **first upgrade the camera to firmware V1.08 and then upgrade again to V1.09**.



GV-IP Device Utility V8.5.3 and GV-IPCAM H.264 Firmware V1.08 / V1.09 are available for download at the links listed below:

Download Links

GV-IP Device Utility V8.5.3

http://www.geovision.com.tw/upload/en/GV-Video_server-firmware/Install_Utility_1202.zip

GV-IPCAM H.264 Firmware V1.08

http://ftp.geovision.tw/ftp/Neo/Firmware/Release_Version/GV-BX120_V108_111230_32M.zip

GV-IPCAM H.264 Firmware V1.09

http://www.geovision.com.tw/upload/en/GV-Video_server-firmware/Firmware_IPCAMBX120_V109_2012-01-02.zip

Use the download links above for the following models:

- Box Camera: GV-BX120D
- Bullet Camera: GV-BL120D
- Vandal Proof Dome: GV-VD120D
- Fixed Dome: GV-FD120D
- Mini Fixed Dome: GV-MFD120

GV-IPCAM H.264 Firmware V1.08

http://ftp.geovision.tw/ftp/Neo/Firmware/Release_Version/GV-BX220_V108_111230_32M.zip

GV-IPCAM H.264 Firmware V1.09

http://www.geovision.com.tw/upload/en/GV-Video_server-firmware/Firmware_IPCAMBX220_V109_2012-01-02.zip

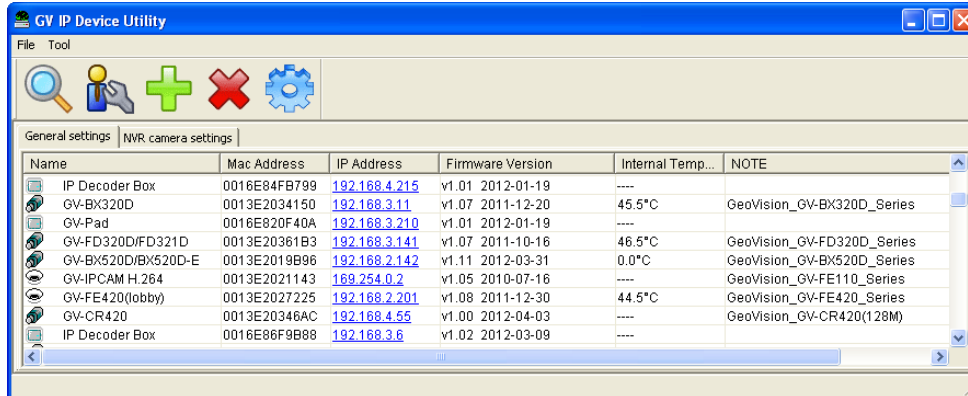
Use the download links above for the following models:

- Box Camera: GV- BX130D / 220D / 320D / 520D
- Bullet Camera: GV-BL130D / 220D / 320D
- Vandal Proof Dome: GV-VD220D / 320D
- Fixed Dome: GV-FD220D / 320D
- Mini Fixed Dome: GV-MFD130 / 220 / 320 / 520
- Fisheye Camera: GV-FE420 / 421 / 520 / 521
- Cube Camera: GV-CB120 / 220, CBW120 / 220

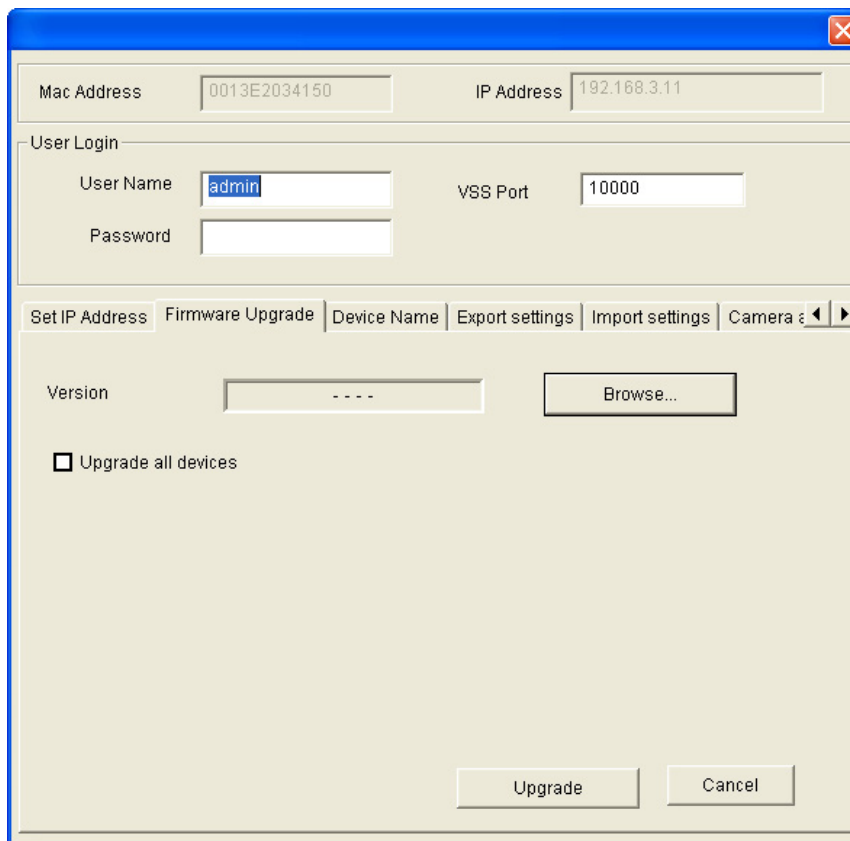


Upgrading Firmware Using GV-IP Device Utility

1. Double-click the **GV-IP Device Utility** icon. The utility will automatically search for available IP devices.



2. Double-click a camera in the list and click the **Firmware Upgrade** tab.



3. Click the **Browse** button to locate the firmware file (.img) saved at your local computer.
4. To upgrade all cameras of the same model in the list, check **Upgrade all devices**.
5. Type the password, and click **Upgrade** to begin the upgrade.