



Problem with Loading Google Maps on E-Map in GV-Recording Server

Article ID: GV01-12-02-10-c

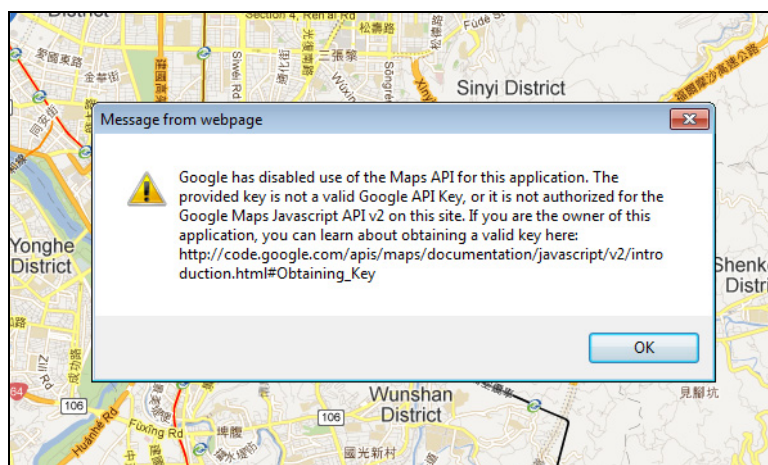
Release Date: 02/10/2012

Applied to

GV-Recording Server

Symptom

When using the E-Map feature in GV-Recording Server, the background Google Maps does not load successfully due to the incompatibility of GV-Recording Server with later Google Maps version.



Solution

To solve this incompatibility, follow the steps below to download and update your GV-Recording Server with patch files.

1. Download the patch files from <http://geo-demo-japan.dipmap.com:8080/download/FAE/ken/patchfile/RecordingServerV1.1.0.0 Patch.zip>
2. Unzip the patch files.
3. Copy and overwrite the **Apache** folder to the **:\RecordingServer**.
4. On the GV-Recording Server Web interface, press **F5** to refresh. The Google Maps will be reloaded.