

# Quick Start Guide



## GV-NVR System Lite

Firmware V1.7

*The Vision of Security*



Thank you for purchasing GV-NVR System Lite. This guide is designed to assist the new user in getting immediate results from the GV-NVR System Lite. For advanced information on how to use the GV-NVR System Lite, please refer to GV-NVR System Lite User's Manual (GV-Desktop < Program button < User Manual).

© 2012 GeoVision, Inc. All rights reserved.  
All GeoVision Products are manufactured in Taiwan.

2012/08  
English  
NVRLV17-QG-A



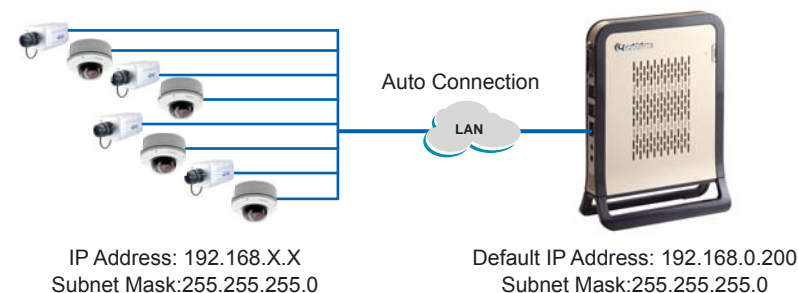
## Basic Installation



1. Connect the speakers to the unit.
2. Connect the microphone to the unit.
3. Using the USB cables, connect a keyboard and a mouse to the unit.
4. Using the DVI cable, connect the computer monitor to the unit.



5. Using the RJ-45 cable, connect a switch or a hub to the unit.
6. Connect **GV IP cameras** to the same LAN with the unit. Then power on the GV IP cameras.
7. Using the supplied power adapter, connect the unit to the power outlet.



After the power is turned on, the GV-NVR System Lite will search for GV IP cameras with the default settings. You can then choose to set up the channels automatically or manually. With automatic setup, the GV IP cameras will be randomly assigned an IP address and displayed on the main screen without any further configuration.

- For automatic setup, see 5. *Basic Configuration* in the *Quick Start Guide*.
- For manual setup, see 3.4 *Setting Up IP Cameras* in the *GV-NVR System Lite User's Manual*.
- To connect third-party IP cameras, see *Setting Up Third-Party IP Cameras* in the *Quick Start Guide*.

**Note:** The monitor you use must be capable of having a screen resolution of 1280 x 1024 and display color of 32 bits.

**IMPORTANT:** Before you power on the GV-NVR System Lite, make sure all the devices are connected to the same LAN and the cameras are powered on.



## Packing List

The GV-NVR System Lite package includes the following items:

**IMPORTANT:** Please keep the original carton and all packing materials for future shipping need.

- GV-NVR System Lite x 1
- AC Power Cord x 1
- Power Adapter x 1
- Base Stand Kit (1 Base Stand Screw included) x 1
- VESA Monitor Mount Kit (1 Stand Screw and 4 Fix Screws included) x 1
- GV-NVR System Lite Quick Start Guide x 1
- GV-NVR Lite dongle for third-party IP camera (optional)



## Supported IP Cameras

The GV-NVR Lite V1.7 supports connections to GV IP cameras and third-party IP cameras. You can adopt one of the following combinations:

- Connect up to 8 GV IP cameras (excluding GV Fisheye Cameras).
- Connect up to 8 third-party cameras (of 640 x 480 resolution).
- Connect up to 6 third-party cameras (of 1280 x 720 resolution).
- Connect up to a total of 8 cameras from GV IP camera (excluding GV Fisheye cameras) and third-party IP cameras (of 640x 480 resolution).
- Connect up to a total of 4 cameras from GV IP camera and third-party IP cameras (of 1280 x 720 resolution).
- Connect one GV Fisheye camera and up to 3 other GV IP cameras.
- Connect one GV Fisheye camera and up to 3 third-party IP cameras (of 640 x 480 resolution).
- Connect one GV Fisheye camera with up to 3 third-party IP cameras (of 1280 x 720 resolution).

The number of supported channels is based on the resolution and codec type below:

Camera Type		Dual Stream Resolution		Max. Frame Rate
		Stream 1 (H.264)	Stream 2 (MPEG4)	
GV IP Camera (excluding GV Fisheye)	D1	704 x 480	352 x 240	30 fps
	D1	704 x 576	352 x 288	25 fps
	1 M	1280 x 720	448 x 252	15 fps
	1.3 M	1280 x 1024	320 x 256	15 fps
	2 M	1920 x 1080	448 x 252	10 fps
	3 M	2048 x 1536	320 x 240	6 fps
	4 M	2048 x 1944	640 x 480	2 fps
	5 M	2560 x 1920	320 x 240	2 fps
Camera Type		Single Stream Resolution (H.264)		Max. Frame Rate
GV Fisheye	1 M	1280 x 1024		5 fps
	4 M	2048 x 1944		2 fps
	5 M	2560 x 1920		2 fps
Third-Party Camera		640 x 480		30 fps
		1280 x 720		15 fps

### Note:

1. For GV IP cameras (excluding GV Fisheye), stream 1 is used for recording and single view, and stream 2 for live viewing in multi divisions.
2. For third-party cameras, it is recommended to set the resolution and codec type as specified above for the best performance and maximum frame rate.
3. For details on bundled software preinstalled in the GV-NVR System Lite, see *The Bundled Software in GV-NVR System Lite User's Manual* (GV-Desktop < Program button < User Manual).

## GV-NVR System Lite Dongle

A dongle is required when connecting to third-party IP cameras.

- Dongle Options: 1, 2, 4, 6 or 8 IP channels.

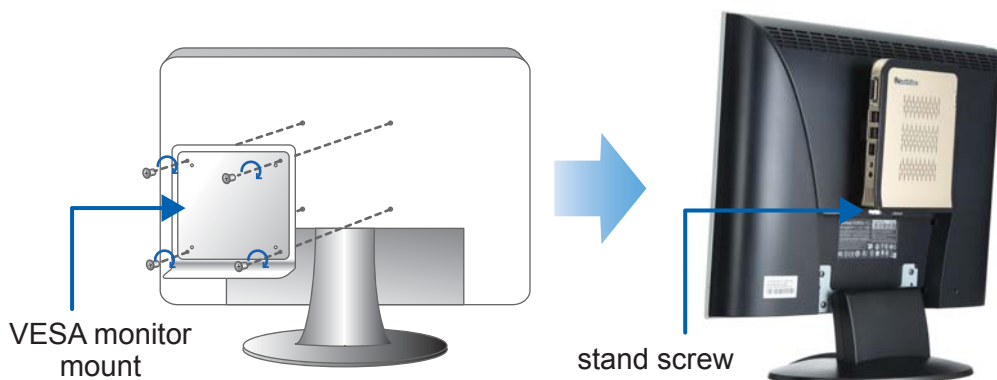
## 4 Mounting Method

### Standing Mount



1. Attach the base stand to the GV-NVR System Lite.
2. Tighten the base stand screw.

### Monitor Mount



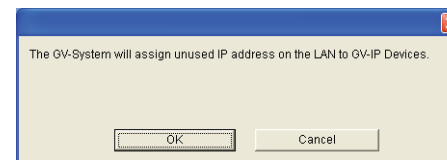
1. Using the 4 fix screws, tighten the VESA monitor mount on the back of the computer monitor.
2. Attach the GV-NVR System Lite to the VESA monitor mount.
3. Tighten the stand screw.

## 5 Basic Configuration

After you have installed the necessary cables and IP cameras, you are ready to display the channels on GV-NVR System Lite.

### Setting Up GV IP Cameras Automatically

1. Power on the GV-NVR System Lite. The GV IP cameras with the default IP address (192.168.0.10), ID (admin) and password (admin) are detected, this message appears.



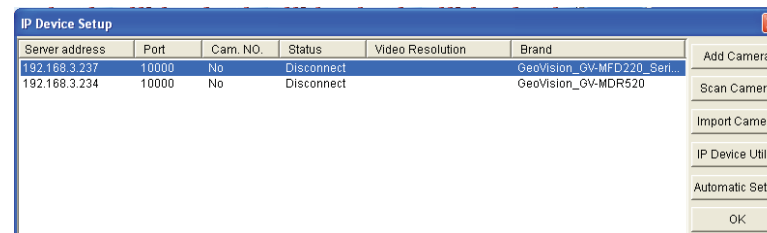
2. Click **OK**. The GV-NVR System Lite will assign unused IP addresses and connect to each of the GV IP camera in the form of 192.168.X.X. The channel will then be displayed on the main screen.

#### Note:

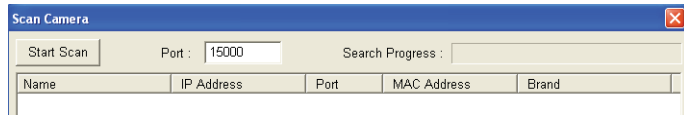
1. The randomly assigned IP addresses will be adopted by the GV IP cameras. However, you can still manually change the IP address. See *Changing the IP address of the GV IP Cameras* later in the *Quick Start Guide*.
2. If you select **Cancel** for manual IP assignment, see 3.4 *Setting Up IP Cameras* in the *GV-NVR System Lite User's Manual*.

### Setting Up Third-Party IP Cameras

1. Power on the GV-NVR System Lite. On the main screen, click the **Configure** button, select **System Configure**, and click **IP Camera Install**. This dialog box appears.



- Click the **Scan Camera** button. This dialog box appears.



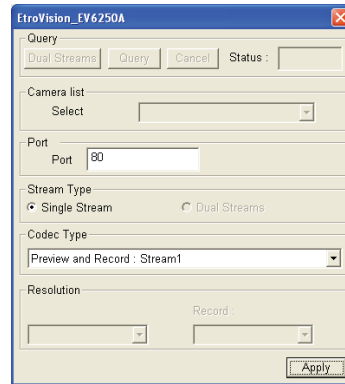
- Click the **Start Scan** button. The IP devices under the same LAN with the GV-NVR System Lite will be searched and listed.
- Double-click the IP camera.
- Type the ID and password of the IP camera and Click **OK**.



Step 5

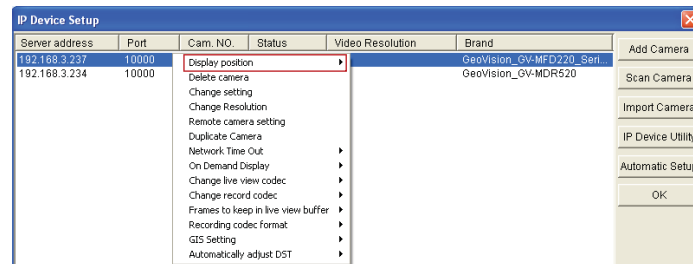
- Click **Query** to detect the IP camera again. For third-party IP cameras, the settings accessible on this interface may vary depending on the camera brand.

- **Port:** Video streaming port number.
- **Stream Type:** The GV-NVR System Lite only supports a single stream when connecting to a third-party IP camera.
- **Codec Type:** It is highly recommended to choose H.264 for best performance.



Step 6

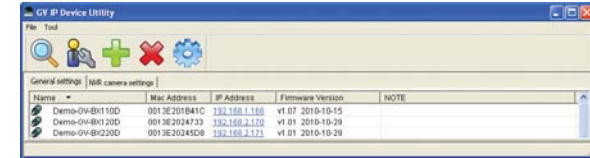
- Click **Apply**. The IP camera will be added to the IP Device Setup window.
- Click the listed camera, and select **Display position** to map the IP camera to a channel on the GV-NVR System Lite.



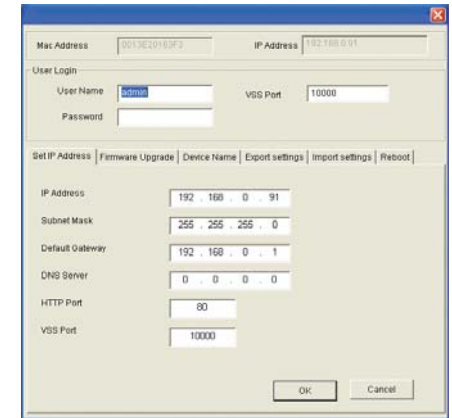
- The Status column now should display "Connected". Click **OK**. The channel should be displayed on the main screen.

## Changing the IP address of the GV IP cameras

- From the desktop of GV-NVR System Lite, click the **Program** button and select **VS Utility**. This dialog box appears. The GV IP device utility will automatically detect the GV IP cameras on the LAN.



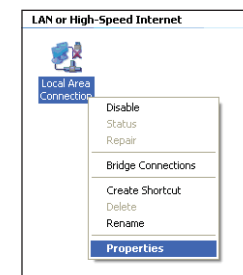
- Double-click the found GV IP camera in the list.
- Type the user name and password of the GV IP camera. By default both values are **admin**.
- Type the new IP information.
- Click **OK**. The new IP address will be updated to the camera.



Step 4

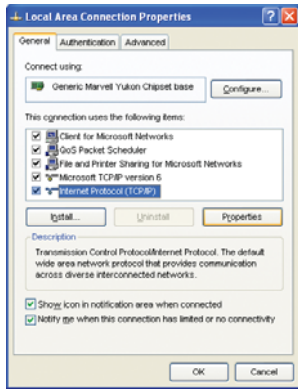
## Changing the IP address of the GV-NVR System Lite

- On the GV-Desktop, click the **Programs** button, and select **Control Panel**.
- Type the ID and password. By default, both values are "0000". The Control Panel window appears.
- Double-click **Network Connections**, right-click **Local Area Connection**, and select **Properties**.

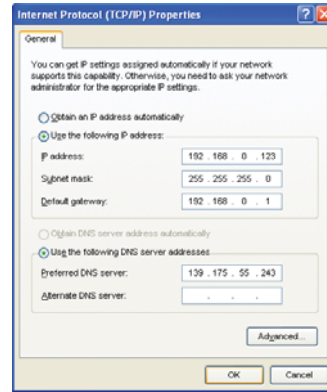




4. In the Local Area Connection Properties dialog box, select **Internet Protocol (TCP/IP)** and click **Properties**.
5. Select **Use the following IP address**, type the new IP information, and click **OK** to finish the setting.



Step 4



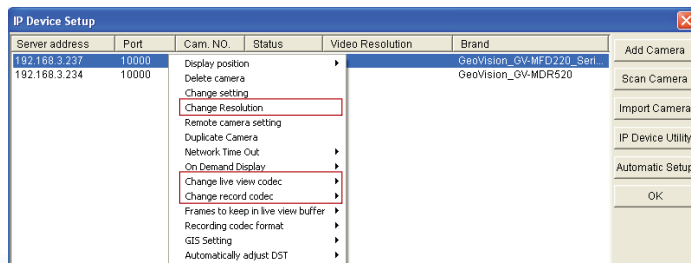
Step 5

**Note:** After you change the IP address of GV-NVR System Lite, you should also change the IP addresses of GV IP cameras accordingly to the same network; otherwise, the GV-NVR System Lite cannot detect the cameras.

## Changing Codec and Resolution of GV IP Cameras

Several resolution, aspect ratio and codec options are available for GV IP cameras, except GV-Fisheye cameras.

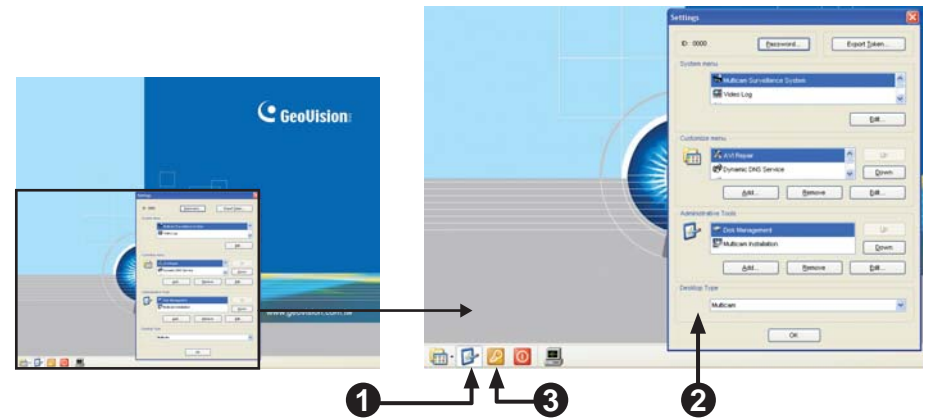
1. On the main screen, click the **Configure** button, select **System Configure** and click **IP Camera Install**. This dialog box appears.
2. Click the listed camera, and select **Change live view codec**, **Change record codec** or **Change Resolution** to change the Live View codec or Recording codec and recording resolution.



## Exiting to Windows

The GV-NVR System Lite is protected by GV-Desktop that is limited to run the selected programs. If you need to exit to Windows desktop, follow these steps.

1. On the GV-Desktop, click the **Settings** button, and type the valid ID and password. The Setting dialog box appears.
2. Under Desktop Type, select **Windows** from the drop-down list, and click **OK**.
3. Click the **Log Off** button, and enter the valid ID and Password. The Windows desktop appears.



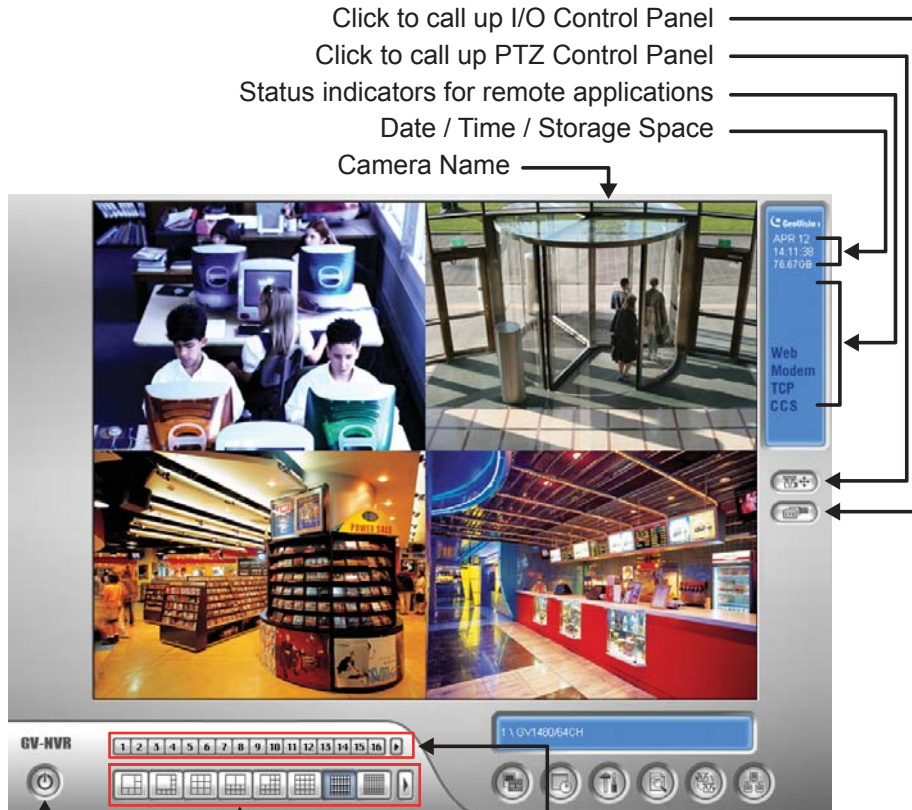
## Returning to GV-Desktop

Click the Windows **Start** button, select **All Programs**, click **GV-NVR**, and click **Key Lock Utility**.



Continued on the reverse >>>>

# 6 Main Screen



Click to call up I/O Control Panel  
Click to call up PTZ Control Panel  
Status indicators for remote applications  
Date / Time / Storage Space  
Camera Name

Logout / Exit / Minimize  
Select screen divisions  
Select a camera for full screen mode



Start/stop recording



Set up recording schedules



Access system settings



Access ViewLog to play back video



Start/stop screen rotation



Access remote applications

## Formatting the External Hard Drive

The GV-NVR System Lite records audio and video to the internal hard drive. You can also use an external hard drive to expand recording space. You must format the hard drive before you can use it.

To format an external hard drive, use Windows's **Disk Management**. To start initializing and formatting an external hard drive, click the **Programs** button on the GV-Desktop, and select **Disk Management**. The feature is protected by an ID and a password. The default ID and password are "0000". For details to format an external hard drive, see 3.5 *Formatting the Hard Drive* in *GV-NVR System Lite User's Manual* (GV-Desktop < **Program** button < **User Manual**).

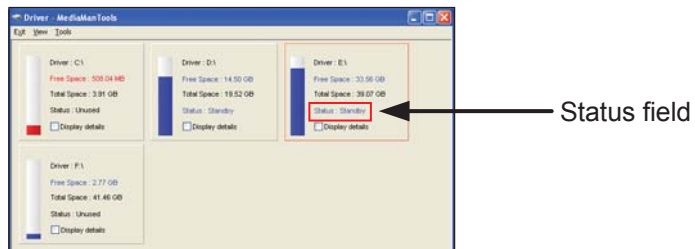
## Adding the External Hard Drive to a Recording Path

Before you start recording to the external hard drive, you need to add the formatted external hard drive to the recording path.

**Note:** The default recording path for external hard drives starts from E:\

1. On the GV-Desktop, click the **Programs** button, and select **Hot Swap HDD Tool**.
2. Right-click the hard drive in the MediaMan Tools window, select **Add for recording**, and then select the storage group from the drop-down list. The Storage 1 is created by default.
3. Click **OK** to automatically configure the hard drive to the recording path.

4. In the MedianMan Tools window, if the hard drive is successfully added to store data, its Status field should display “Standby”.




5. To add another formatted hard drive for storage, repeat the above steps.

For details, see *3.6 Adding the External Hard Drive to the Recording Path* in *GV-NVR System Lite User's Manual* (GV-Desktop < **Program** button < **User Manual**).


## Renaming the Camera

You can give a new name for each camera.

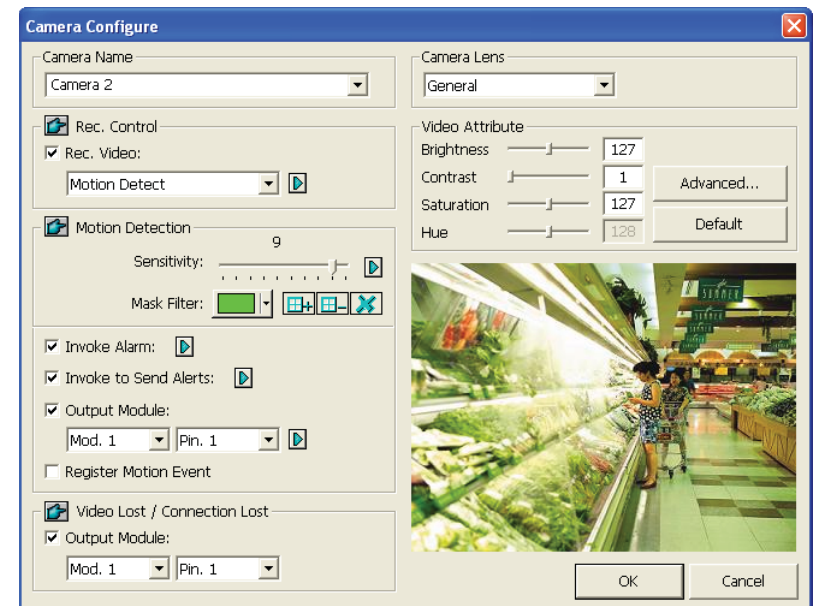
1. Click  on the main screen, click **System Configure** and select **Camera Configure**.
2. In the Camera Name field, type a new name for the camera.
3. Click **OK**.

## Choosing Recording Mode

You can set each camera's recording mode individually for Motion Detection, Round-the-Clock or Day-Night.

1. Click  on the main screen, click **System Configure** and select **Camera Configure**.
2. From the Camera Name drop-down list, select one camera.
3. In the Rec Control field, select **Rec Video**, and use the drop-down list to select **Motion Detect**, **Round-the-Clock** or **Day-Night**.
4. Click **OK**.


For details on setting camera properties, refer to *Adjusting Individual Camera*, Chapter 1, *DVR User's Manual* (GV-Desktop < **Program** button < **User Manual**).



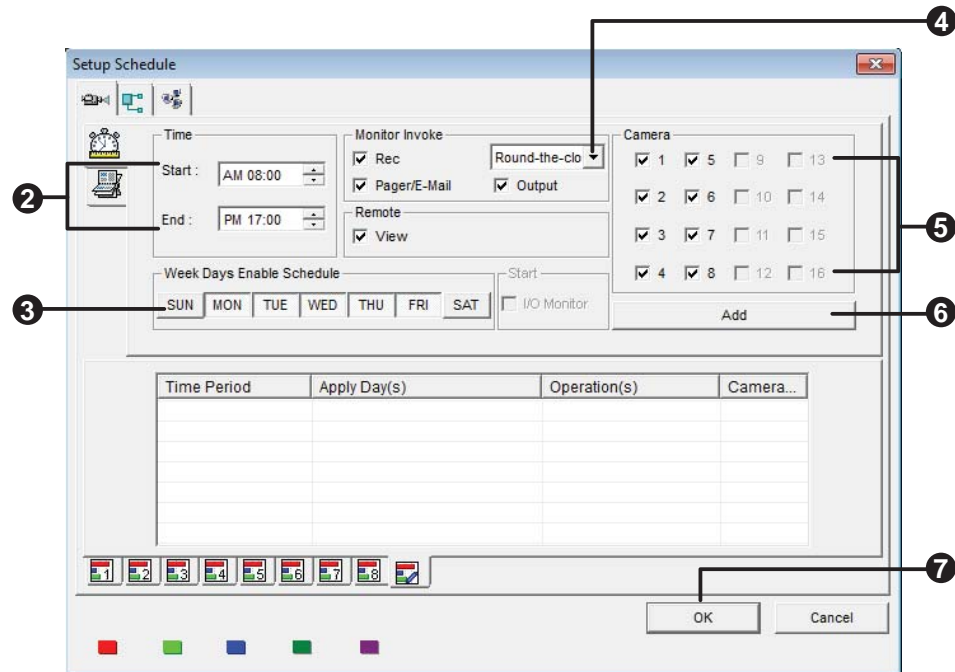


## 7 Recording Schedule Setup

You can program recording to turn on and off at a specific time each day.



1. Click  on the main screen, and select **Schedule Edit**.
2. Select or enter the Start and End time of the schedule.
3. Select day(s).
4. Select **Rec**, and use the drop-down list to select **Round-the-Clock** or **Motion Detect** for recording mode.
5. Select camera(s).
6. Click **Add**.
7. Click **OK**.

For details, refer to *Recording Schedule*, Chapter 1, *DVR User's Manual* (GV-Desktop < **Program** button < **User Manual**).



## 8 Video Playback

You can play back video recorded during a particular date and time.

1. Click  on the main screen, and select **Video/Audio Log**.
2. Select the camera you wish to view.
3. Select a date folder from the date tree.
4. Select a time from the Video Events list.
5. Click  to begin playback.

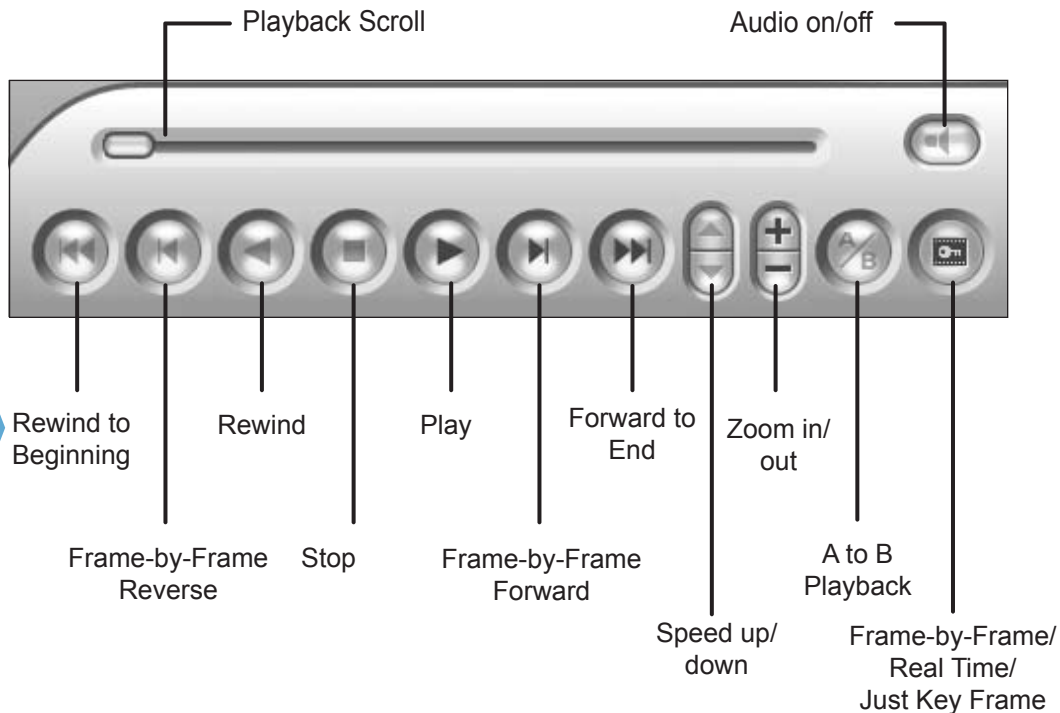
For details, refer to *Playing Back Video Files*, Chapter 4, *DVR User's Manual* (GV-Desktop < **Program** button < **User Manual**).





## Video Files Backup



### Playback Controls



### Using the Zoom

- **Zoom in:** Click the **Zoom-in** button, and then click on the area you want to magnify. Each click will increase the zoom level.
- **Zoom out:** Click the Zoom-out button, and then click on the image to zoom out. Each click will decrease the zoom level.

You can back up video files of the desired time to CD / DVD.

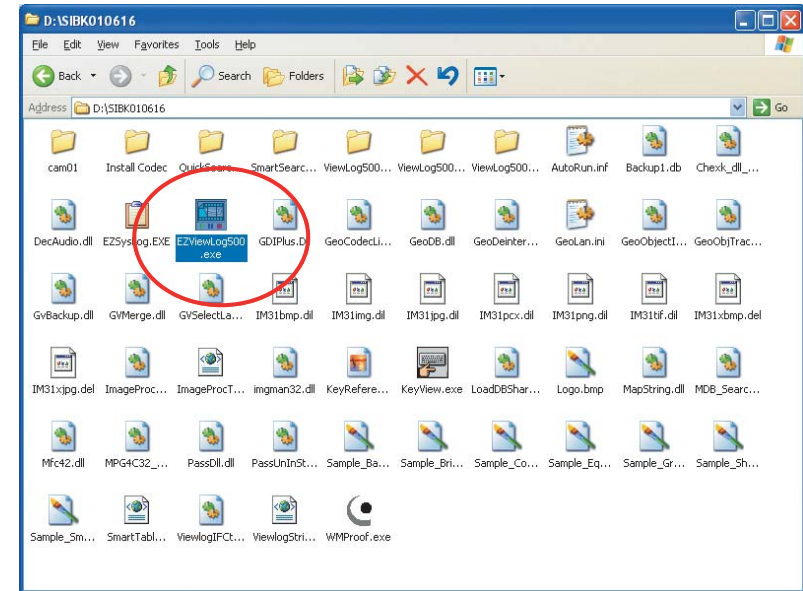
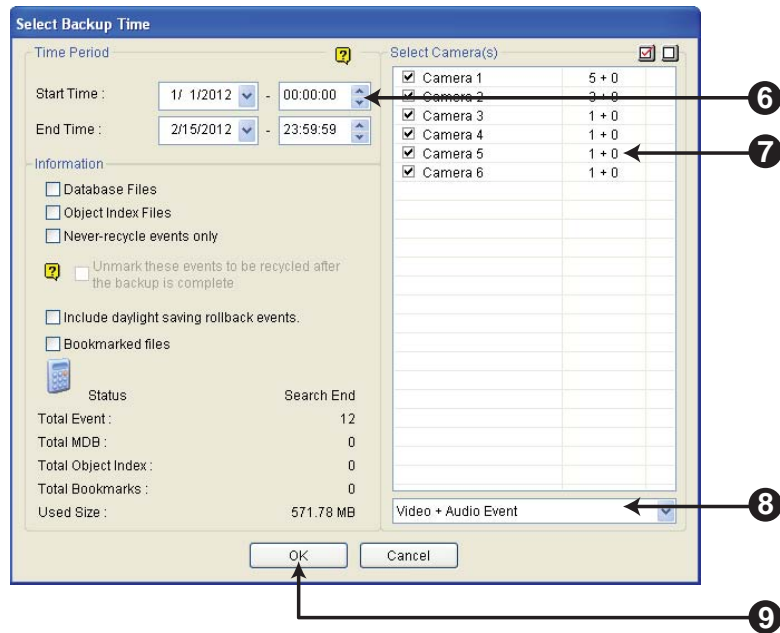
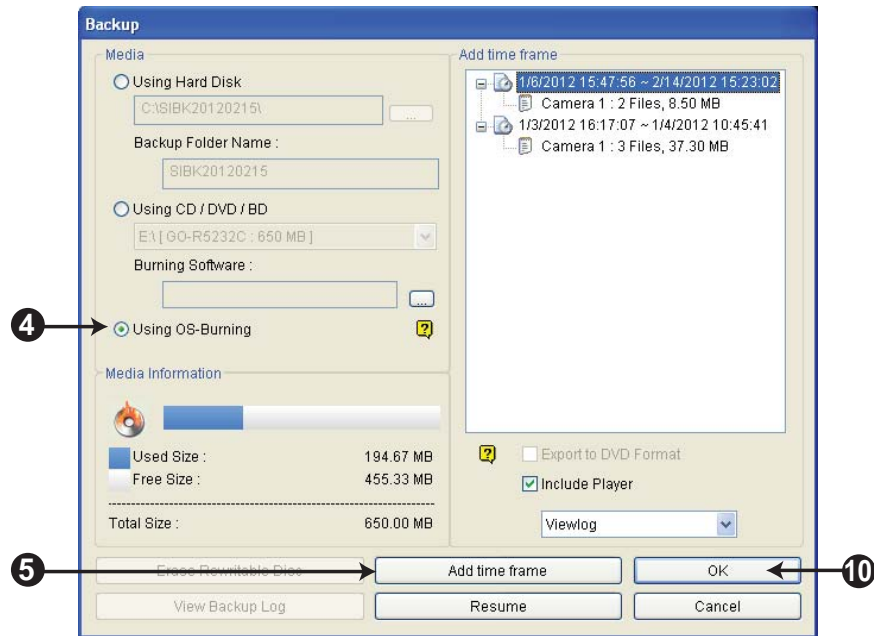
1. Insert the CD / DVD media into the drive.
2. Click  on the main screen, and select **Video/Audio Log**.
3. Click  on the functional panel.
4. Select **Using OS-Burning** to burn files with the inbuilt software of Windows XP.
5. Click **Add time frame**.
6. Enter the Start Time and End Time for backup.
7. Select the desired camera(s) for backup. The number of video and audio files of each camera is indicated respectively, e.g. "Camera 3 39+0" means the camera 3 has 39 video files and 0 audio file.
8. Select the types of events for backup, e.g. video, audio or both together.
9. Click **OK** to add the time frame. You can repeat steps 5-8 to create up to 10 time frames.
10. Click **OK** to start burning.

For details, refer to *Backing Up and Deleting Files*, Chapter 5, *DVR User's Manual* (GV-Desktop < **Program** button < **User Manual**).

**Note:** You have to connect a USB DVD RW device to the GV-NVR System Lite for video files backup.

## Playing Backup Files

Open the backup folder, run **EZViewLog500.exe**, and then follow the instructions in the *Video Playback* section above.



# 10 System Restoration

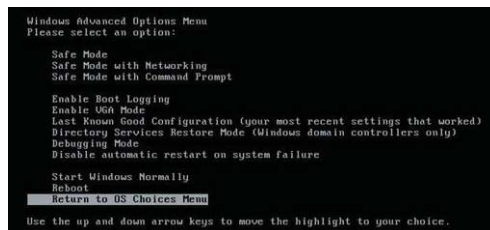
You can restore preinstalled files once they are damaged by running the recovery from the hidden partition. To restore the operating system and all preinstalled software, follow the steps below:

**Note:** After recovery, you need to re-install all settings and passwords. But the recovery will not delete your recording files saved in the partition D since it only reformats the partition C.

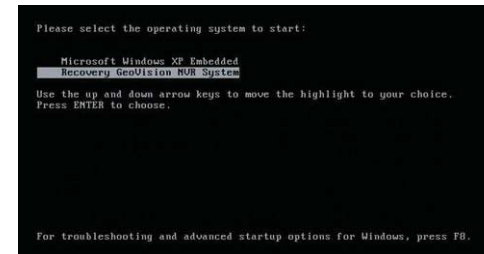
1. Restart the GV-NVR System Lite. This image appears.



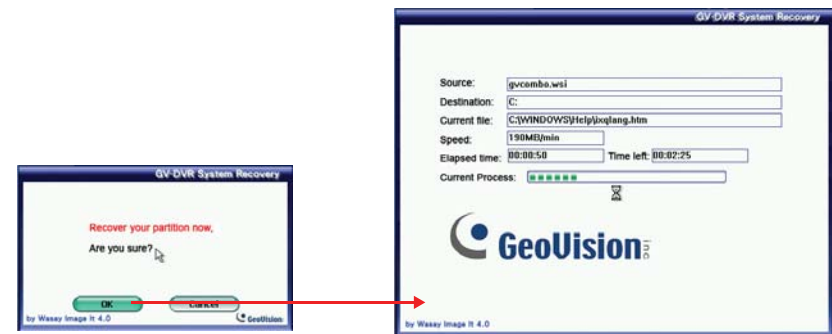
2. Once the above image appears, keep on clicking the **F8** button on the keyboard until the following image appears. Then select **Return to OS Choices Menu**.



3. Select **Recovery GeoVision NVR System**.



4. Wait until the "Recover your partition now. Are you sure?" message appears. Click **OK** to start the recovery.



When the recovery process is complete, the confirmation message "The recovery process is finished. Please remove DVD and press "OK" to reboot?" will appear. Click **OK** to restart the GV-NVR System Lite

