

Connect Ruby Super System II - Gemstone to GV-system

Below is a picture of the Verifone Ruby Super System II



The Ruby Super System uses RJ45 to DB25 to connect to printer.



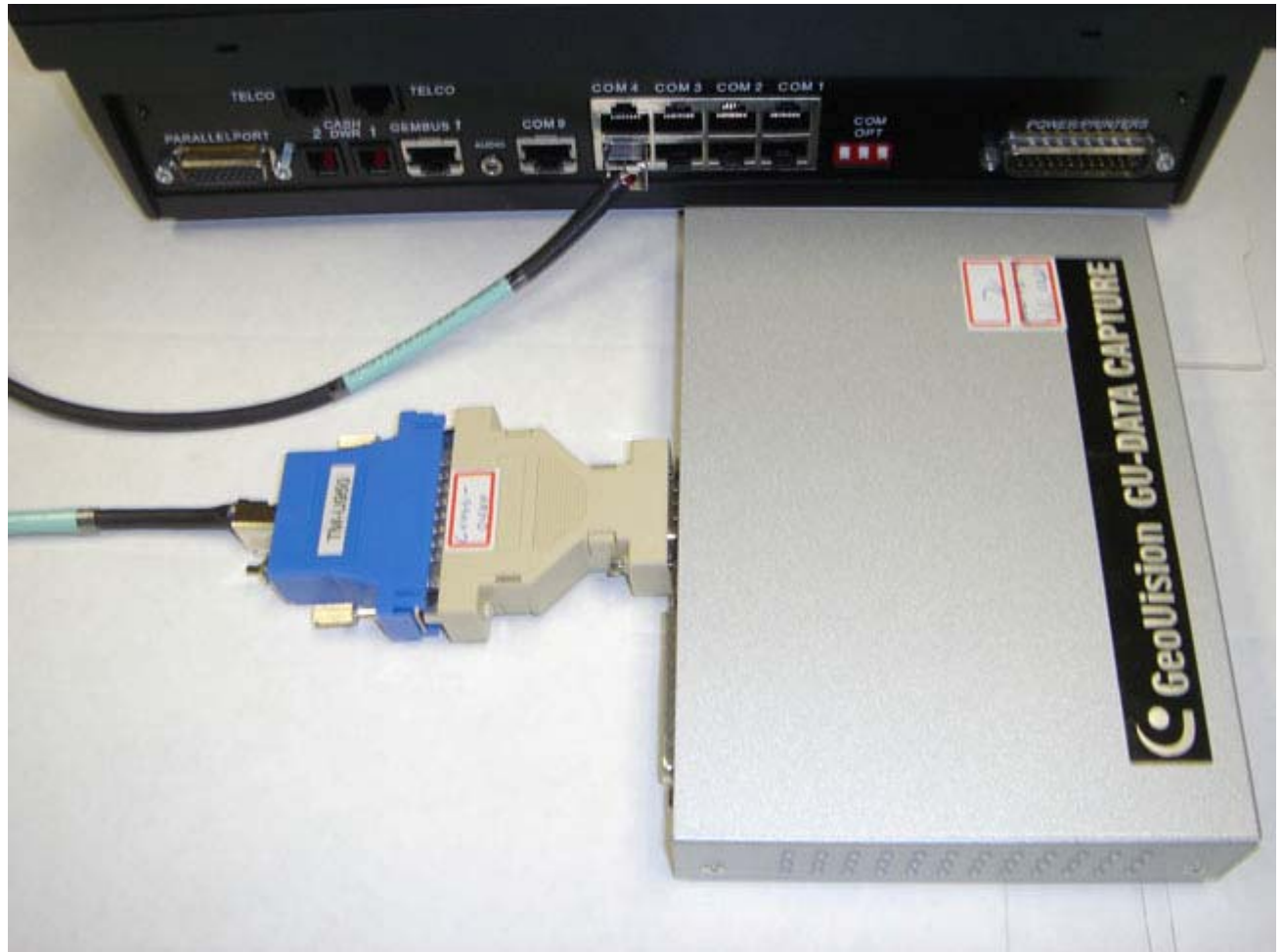
The Epsom TMU950 and TMU930 is the most widely used printers for the Ruby Super System.



The Epson TMU950/930 is a DB25pin serial printer.



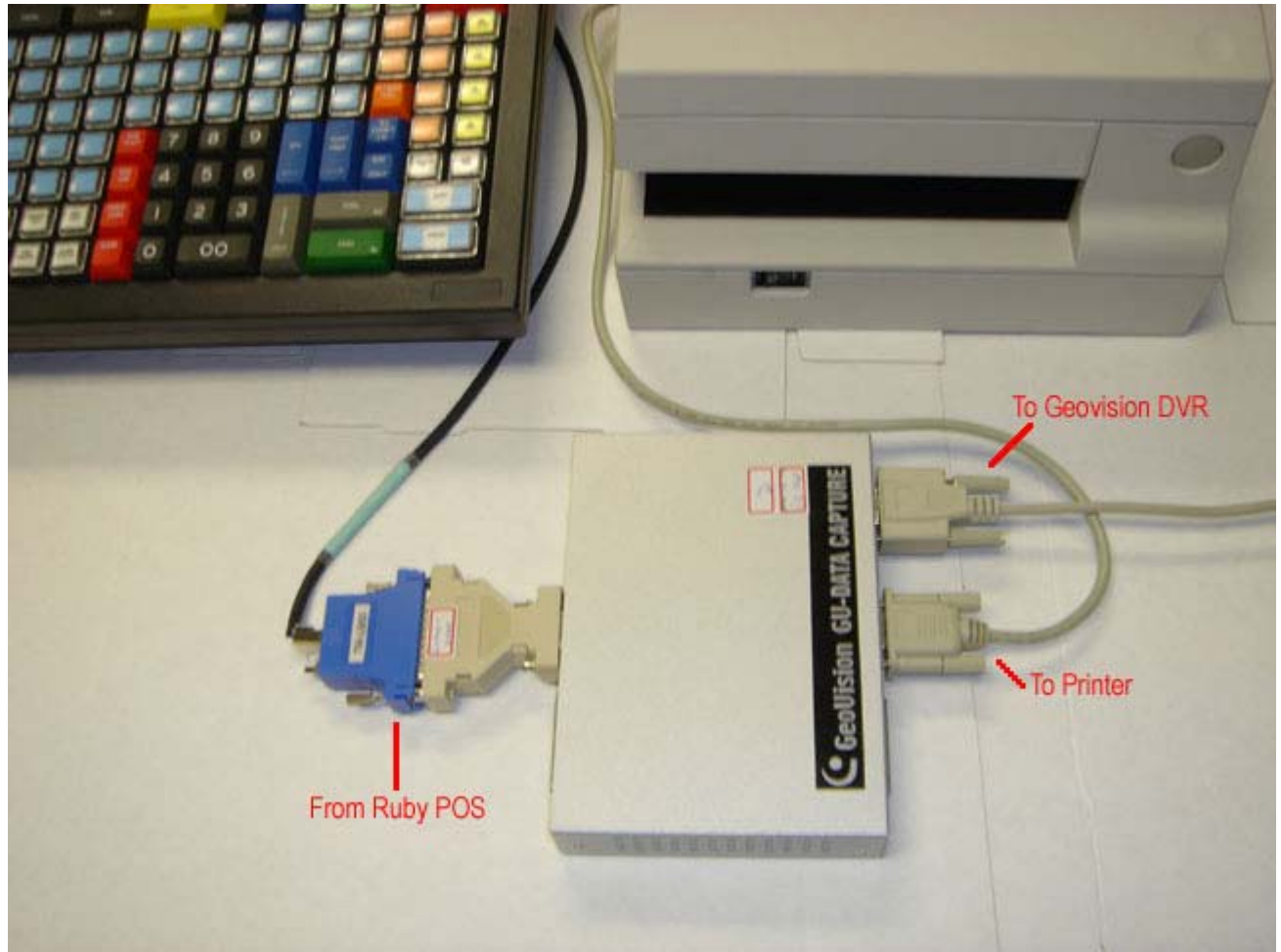
Connect a DB25 to DB9 crossover connector with the Ruby Super System and the Geovision Data Capture Box. The crossover connector is provided with the Data Capture Box.



For the Epson TMU950/930 printer, another DB25 to DB9 crossover connector will also be needed. The crossover connector is also provided with the purchase of a GeoVision Data Capture Box.



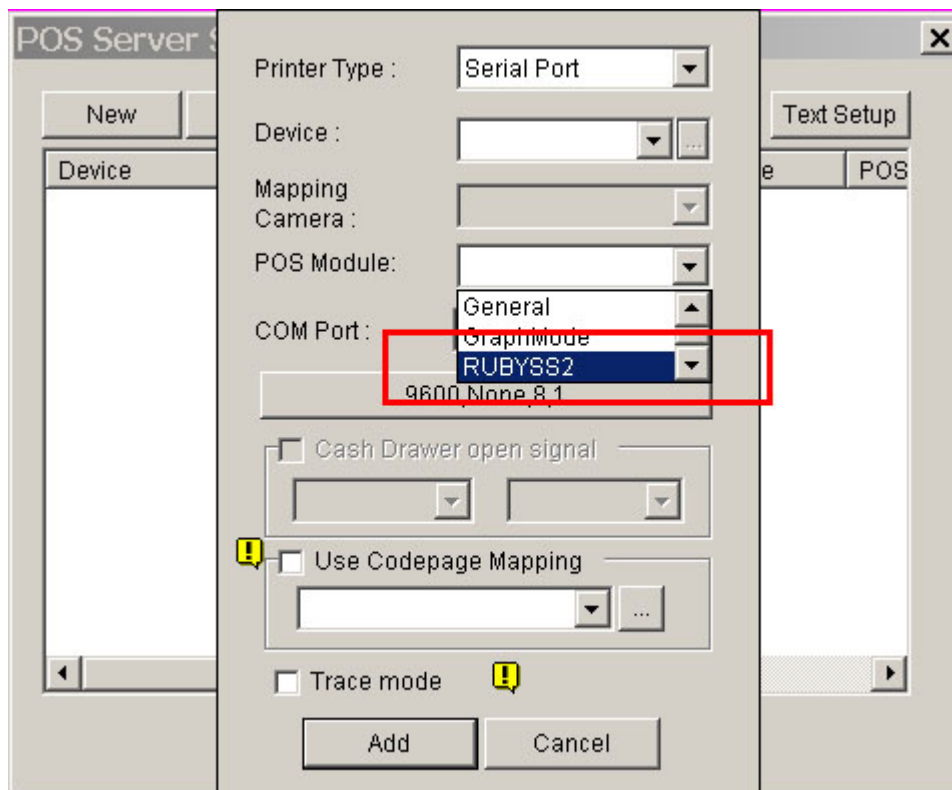
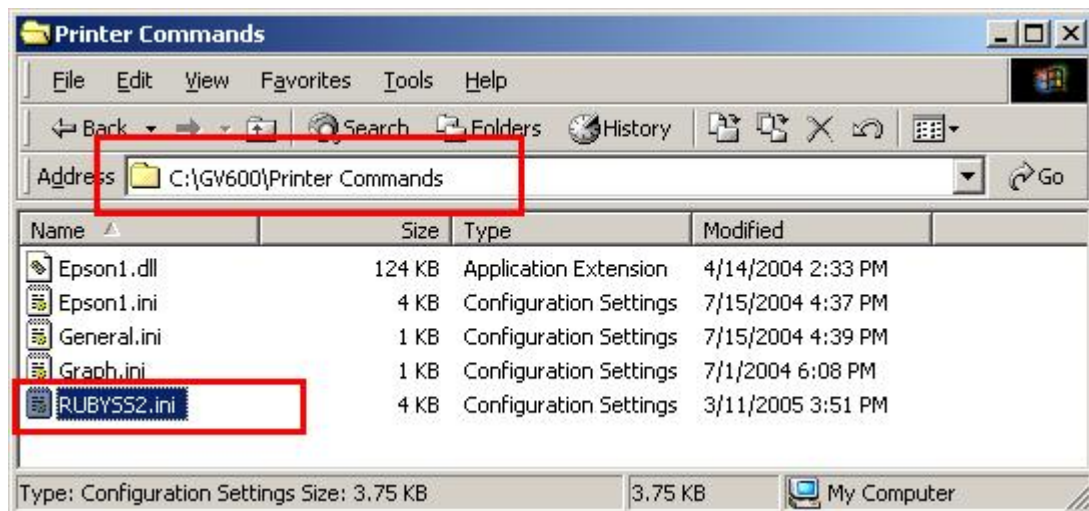
The following picture illustrates how the connections should be made to the Data Capture Box.



On the Geovision DVR computer, under the POS Server Setup, select RUBYSS2 for the POS Module. The link below can be used to download and install the RUBYSS2 module.

<http://geo-support.dipmap.com:100/pos/rubypos/rubyss2.zip>

The command module downloaded should be placed under C:\GVXXX\Printer Commands\ .



Finally, ring up some transactions on the Ruby POS and you should start seeing an overlay on the screen.