



GV-IP Device Integration Patch for GV-System V8.5.6.1

Article ID: GV40-13-06-06-c

Release Date: 06/06/2013

Applied to

GV-IP Devices

- GV-BL1210 / 2410 / 3410 / 5310
- GV-BL1200 / 1300 / 2400 / 3400
- GV-BX2400-E / 3400-E / 5300-E
- GV-FD1200 / 2400 / 3400 / 5300
- GV-FD1210 / 2410 / 3410
- GV-VD1200 / 2400 / 3400 / 5300
- GV-VD1210 / 2410 / 3410
- GV-FE2301 / 4301
- GV-MFD1301 / 1501 / 2401 / 3401 / 5301
- GV-PT130D / 220D / 320D
- GV-UBL1301 / 2401 / 3401 Series
- GV-UBL1211 / 2411 / 3411
- GV-UBX1301 / 2301 / 3301 Series

GV-Software

- GV-System V8.5.6.1
- GV-Control Center V3.0.3.0
- GV-Recording Server V1.2.0.0
- GV-Mobile Server V1.4.0.0
- GV-Redundant Server / GV-Failover Server V1.0.1.0



- GV-GIS V3.1.0.0

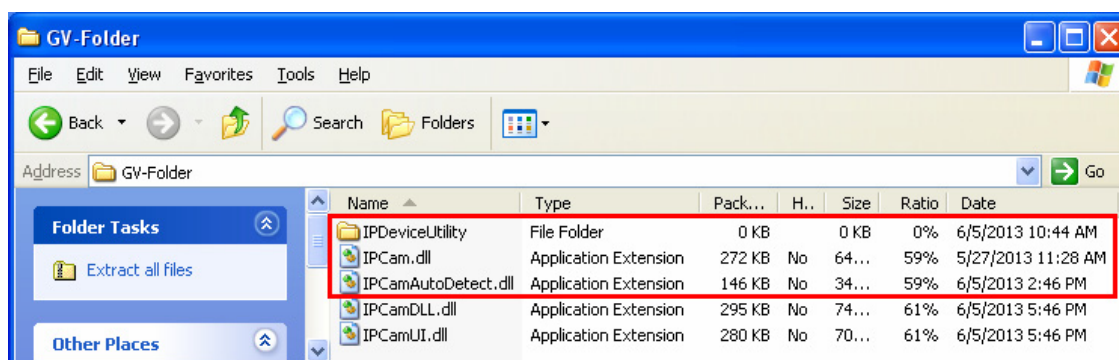
How to Install Patch Files

To connect to the new GV-IP devices listed above on the GV-Software listed above, patch files are required. There are two ways to obtain the patch files:

- Download the patch files from the link below and unzip the downloaded file.
http://ftp.geovision.tw/ftp/AlexHuang/patch/20130605/IPCamera_Patch.zip
- Insert the supplied Software DVD and click the **IP Camera Patch Files** folder.

There are two folders in the patch folder: **GV-Folder** and **For Windows**. Follow the steps below to install patch files.

1. Copy the content of the **For Windows** folder and paste them in C:\WINDOWS\.
2. For GV-System and GV-Recording Server, copy the content of the **GV-Folder** folder and paste them to the GV-Software folder.
3. For GV-Control Center, open the **GV-Folder** folder and copy **IPDeviceUtility** folder, **IPCam.dll** and **IPCamAutoDetect.dll** to the GV-Control Center folder.



4. For GV-GIS, open the **GV-Folder** folder and copy **IPCamAutoDetect.dll** to the GV-GIS folder.
5. If a message pops up to inform you a file with the same name already exists in the folder, click **Yes** to replace the existing file.
6. Restart the GV-Software.