

Quick Start Guide



The Vision of Security

GV-Tower DVR/NVR System

Thank you for purchasing GV-Tower DVR/NVR System. This guide is designed to assist the new user in getting immediate results from the GV-Tower DVR/NVR System. For advanced information on how to use the GV-Tower DVR/NVR System, please refer to *GV-Tower DVR/NVR System User's Manual* (GV-Desktop < **Program** button < **User Manual**).



Introduction

Welcome to the *GV-Tower DVR/NVR System Quick Start Guide*. In the following sections, you will learn about the basic installations and configurations of the GV-Tower DVR/NVR System. For a detailed user's manual, see *GV-Tower DVR/NVR System User's Manual* (GV-Desktop < **Program** button < **User Manual**).

Packing List

- GV-Tower DVR/NVR System x 1
- LFH Audio and Video Cable x 1 (only for GV-Tower DVR System)



- Keys for Hard Disk Safety Lock x 2
- Hard Disk Drive Screw x 16



- GV-IR Remote Control x 1

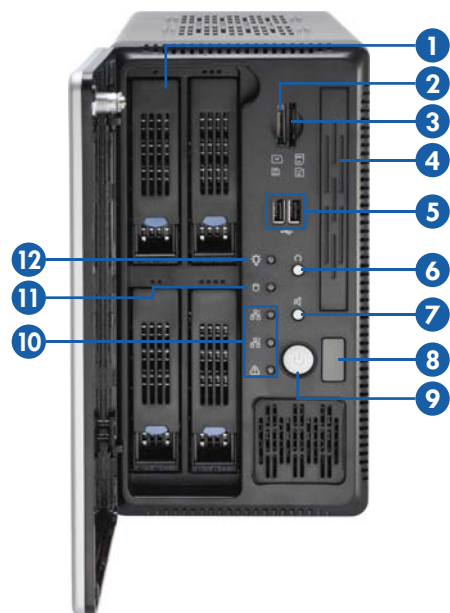


- AC Power Cord x 1



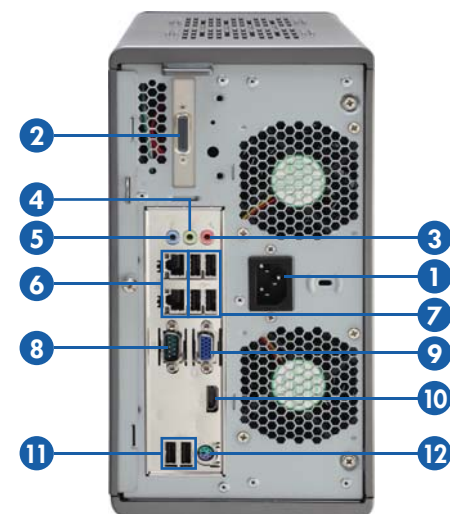
- GV-Tower DVR/NVR System Quick Start Guide x 1
- Surveillance System Software DVD x 1

Front View



No.	Name	No.	Name
1	HDD x 4	7	Not Functional
2	Not Functional	8	IR Receiver
3	Not Functional	9	Power Button
4	Not Functional	10	Not Functional
5	Not Functional	11	HDD Activity LED (Red)
6	Reset Button	12	Power LED (Blue)

Rear View

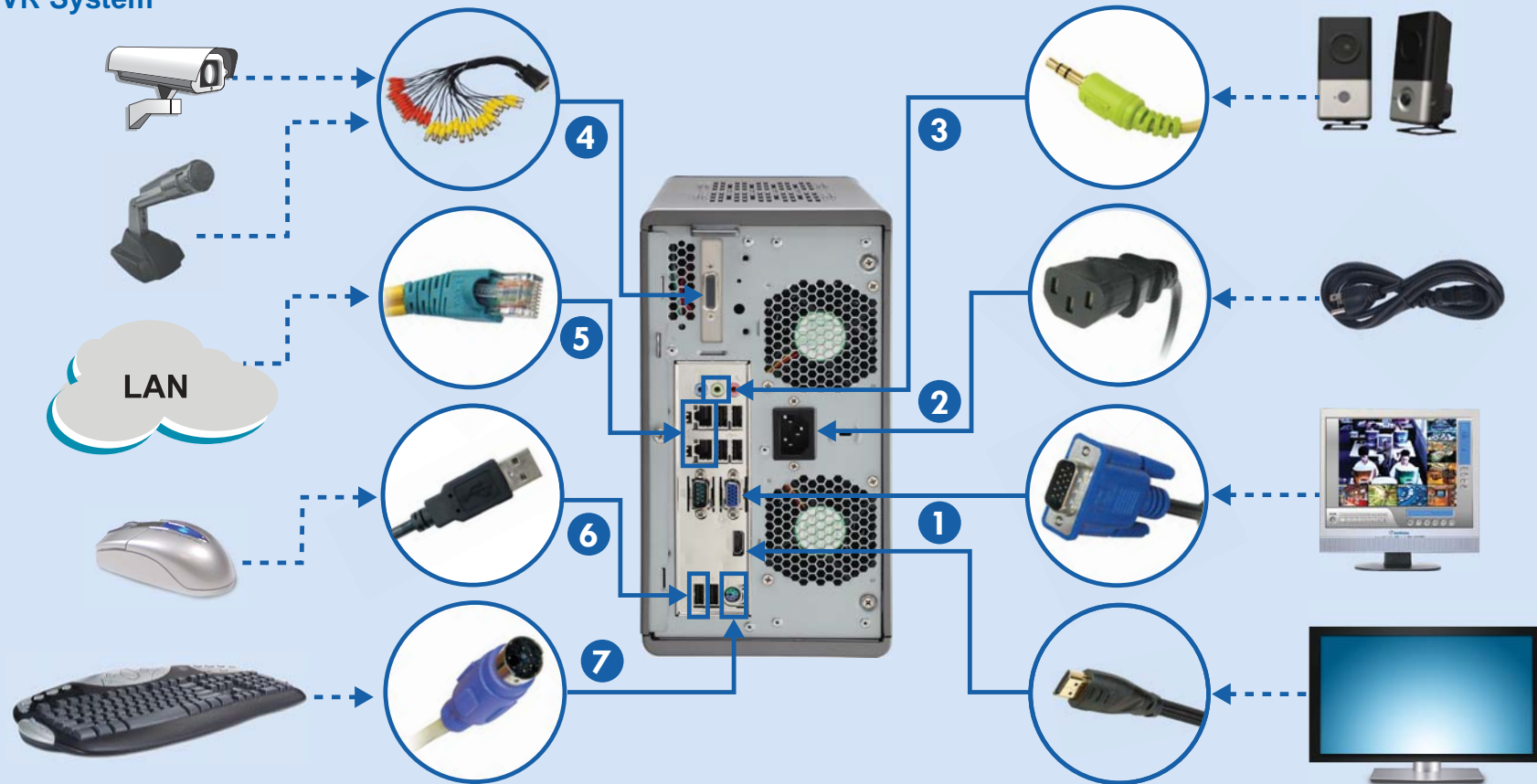


No.	Name	No.	Name
1	Power Connector	7	USB 2.0 Port x 4
2	LFH Audio and Video Connector *	8	Not Functional
3	Audio Microphone In Port	9	VGA Monitor Output
4	Audio Line Out Port	10	HDMI Port
5	Audio Line In Port	11	USB 2.0 Port x 2
6	Ethernet Port x 2	12	PS/2 Port (only for the keyboard)

Note: The feature marked with * is for GV-Tower DVR System only.

Basic Installation

GV-Tower DVR System



1. There are two ways to connect the monitor to the GV-Tower DVR/NVR System.
 - Using the VGA cable supplied by the monitor manufacturer, connect the VGA monitor.
 - Using the HDMI cable supplied by the HDTV manufacturer, connect the HDTV.
2. Using the supplied power cord, connect one end to the AC input and the other end to the power outlet.
3. Connect speakers to the Audio Line Out port.

4. Using the supplied LFH Audio and Video cable, connect the yellow ends to the cameras, and the red ends to the microphones.
5. Using the RJ-45 cable, connect one end to the Ethernet port and the other end to Network.
6. Connect the mouse to the USB port.
7. Connect the keyboard to the PS/2 port.

Once the above hardware is properly connected, press the **Power** button on the front panel to start the system. It takes about 1 minute for startup. The system should load automatically and display cameras in the main screen.

2

Install the Hard Drive

Using the IR Remote Control

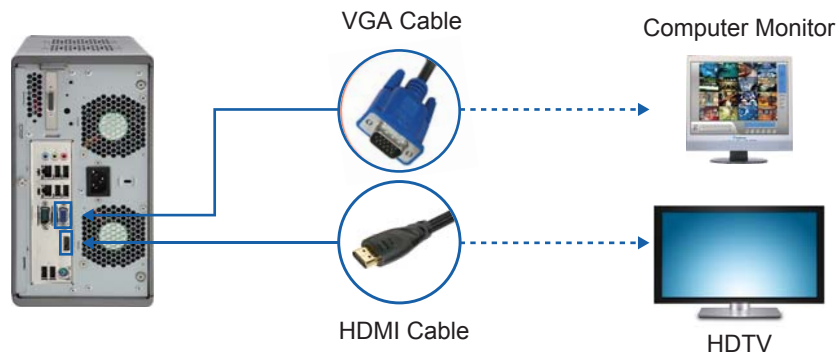
The GV-IR Remote Control provides easy control of the GV-Tower DVR/NVR System. Its receiver is a built-in device.

For details, see *GV-IR Remote Control User's Manual* (GV-Desktop < **Program** button < **User Manual**).



Connecting to 2 Monitors

You can connect the 2 monitors to the ports labeled below on the back panel of the GV-Tower DVR/NVR System. Here we use GV-Tower DVR as the example.



The GV-Tower DVR/NVR System uses SATA hard drives for video and audio data storage. Before recording, ensure to install your hard drives. Follow the below steps to install the hard drive.

1. Press the release latch. The drawer handle pops up.



2. Pull out the drive drawer.
3. Remove the plastic carrier from the chassis.



4. Insert the hard drive in the drawer.

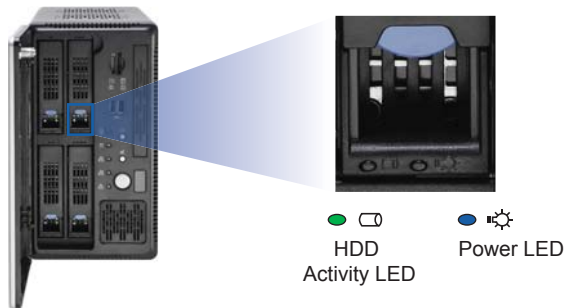


3 Turn on the Power

- Secure the hard drive with the 4 screws, and make sure all screw heads flush with the surface.



- Put the drawer back in the drive bay of the GV-Tower DVR/NVR System, and push the latch until it locks.
- When the Power LED on the drawer shines blue, the hard drive is now ready to use.



- To format the hard drive, see 3.3 *Formatting the Hard Drive* in *GV-Tower DVR/NVR System User's Manual* (GV-Desktop < **Program** button < **User Manual**).
- To add the hard drive to the recording path, see 3.4 *Adding the Hard Drive to the Recording Path* in *GV-Tower DVR/NVR System User's Manual* (GV-Desktop < **Program** button < **User Manual**).

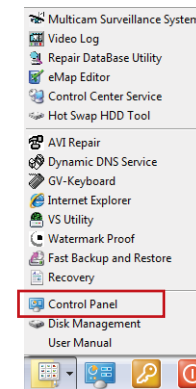
Configuring the IP Address

GV-Tower DVR/NVR System supports remote monitoring, control and configuration over a network connection. The following default IP addresses will automatically be assigned.

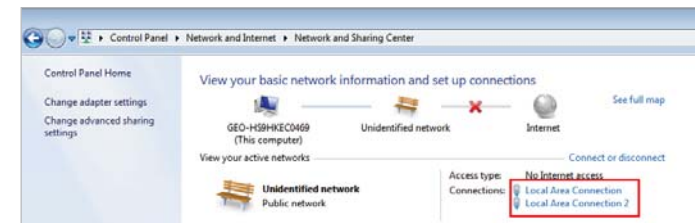
- **Connection 1: 192.168.0.200**
- **Connection 2: 192.168.0.201**
- **Default Subnet Mask: 255.255.252.0**

To change the above default IP addresses, follow the steps below.

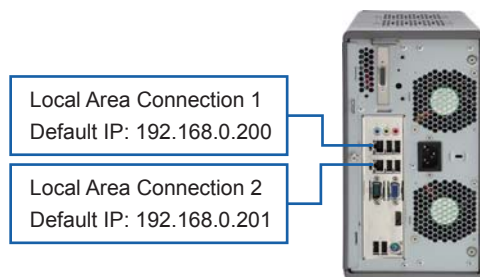
- On the GV-Desktop, click the **Programs** button, and select **Control Panel**.



- Type the ID and password. The default ID and password are "0000". The Control Panel window appears.
- Under Network and Internet, click **View network status and tasks**.
- Under Connections, select the **Local Area Connection** you want to configure.



The local area connections listed correspond to the Ethernet ports as shown below:



5. Select **Internet Protocol Version 4 (TCP/IPv4)**, and select **Properties**.
6. Select **Use the following IP address** and type the new IP information in the fields. Or select **Obtain an IP address automatically** to enable dynamic IP address.
7. Click **OK** to finish the setting.

For details, see 3.7 *Configuring the IP Address* in *GV-Tower DVR/NVR System User's Manual* (GV-Desktop < **Program** button < **User Manual**).

Exiting to Windows

GV-Tower DVR/NVR System is protected by GV-Desktop that is limited to run the selected programs. If you need to exit to Windows desktop, follow these steps.

1. Exit the main screen to display the GV-Desktop screen.

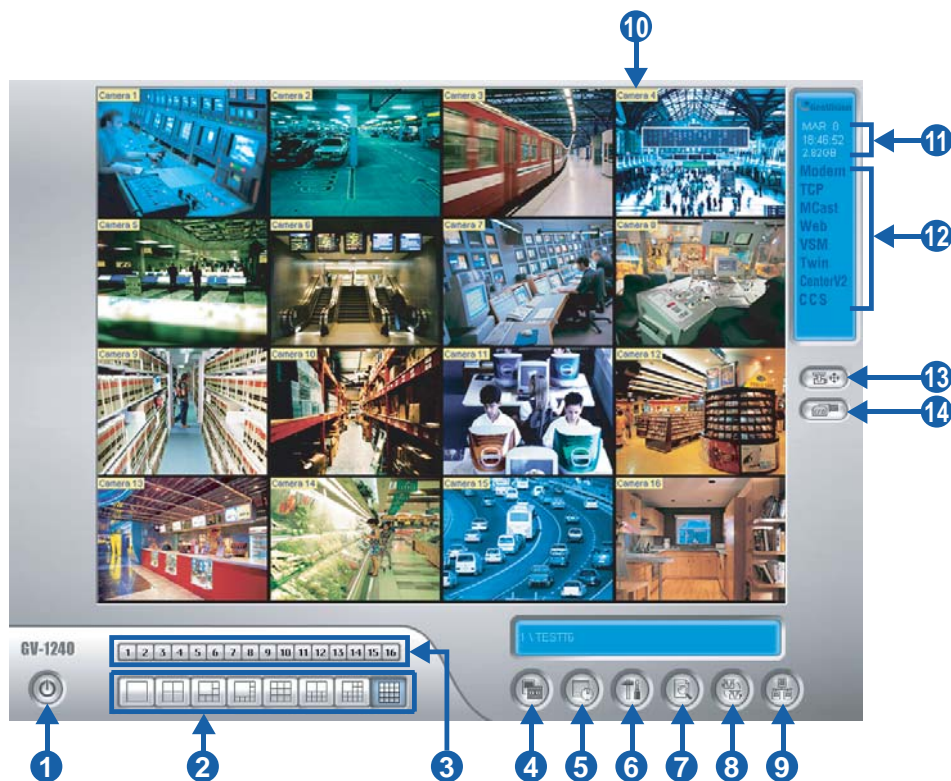


2. Click the **Settings** button, and type the valid ID and password. The default ID and Password are "0000". The Settings dialog box appears.
3. Under Desktop Type, select **Windows** from the drop-down list, and click **OK**.
4. Click the **Log Off** button, and type the ID and Password to display the Windows desktop.



To return to the GV-Desktop, see 3.9 *Returning to GV-Desktop* in *GV-Tower DVR/NVR System User's Manual* (GV-Desktop < **Program** button < **User Manual**).

4 Main Screen



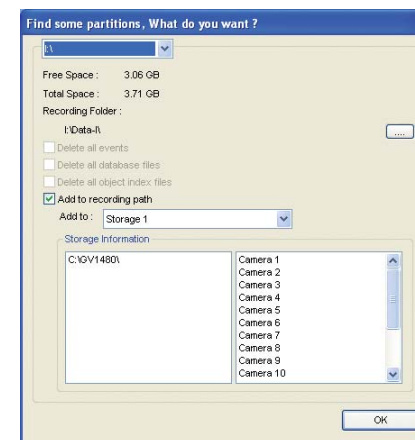
- | | |
|---|---|
| 1. Logout / Exit / Minimize | 8. Start/stop screen rotation |
| 2. Select screen divisions | 9. Access remote applications |
| 3. Select a camera for full screen mode | 10. Camera Name |
| 4. Start/stop recording | 11. Date / Time / Storage Space |
| 5. Set up recording schedules | 12. Status indicators for remote applications |
| 6. Access system settings | 13. Click to call up PTZ Control Panel |
| 7. Access ViewLog to play back video | 14. Click to call up I/O Control Panel |

Adding Hot Swap Drive to Recording Path

Before recording, you need to add the formatted hard drive to the recording path.

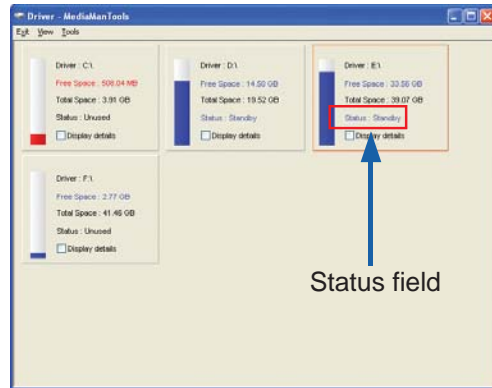
Note: The default recording path for the hot-swap drives starts from D:\

- On the GV-Desktop, click the **Programs** button, and select **Hot Swap HDD Tool**.
- If a hard drive is already inserted, right-click it in the MediaMan Tools window, select **Add for recording**, and then select the storage group from the drop-down list.
- If a hard drive is not inserted, follow these steps:
 - (1) Insert a hot-swap hard drive or plug a portable hard drive to the GV-Tower NVR/DVR System. This dialog box appears.




- (2) Select **Add to recording path**, and select the storage group from the drop-down list.
- Click **OK** to automatically configure the hard drive to the recording path.

5. In the MediaMan Tools window, if the hard drive is successfully added to store data, its Status field should display “Standby”.
6. To add another formatted hard drive for storage, repeat the above steps.




Renaming the Camera

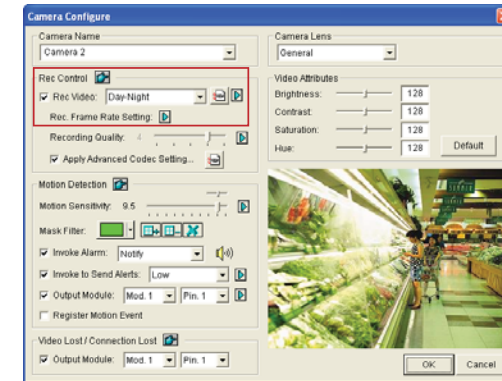
1. Click  on the main screen, click **System Configure** and select **Camera Configure**.
2. In the Camera Name field, type a new name for the camera.
3. Click **OK**.

Choosing Recording Mode

You can set each camera's recording mode individually for Motion Detection, Round-the-Clock or Day-Night.


1. Click  on the main screen, click **System Configure** and select **Camera Configure**.
2. From the Camera Name drop-down list, select one camera.
3. In the Rec Control field, select **Rec Video**, and use the drop-down list to select **Motion Detect**, **Round-the-Clock** or **Day-Night**.
4. If you select **Day-Night**, click the **Arrow** button after the Rec Video option to set up time frames.
5. Click **OK**.

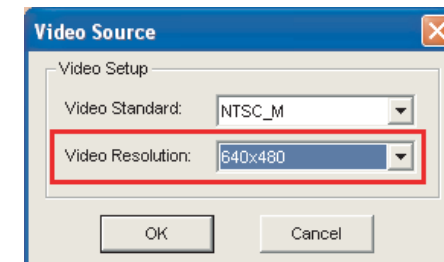
For details on setting camera properties, refer to *Adjusting Individual Camera*, Chapter 1, *DVR User's Manual* on Surveillance System Software DVD.




Changing Recording Resolution

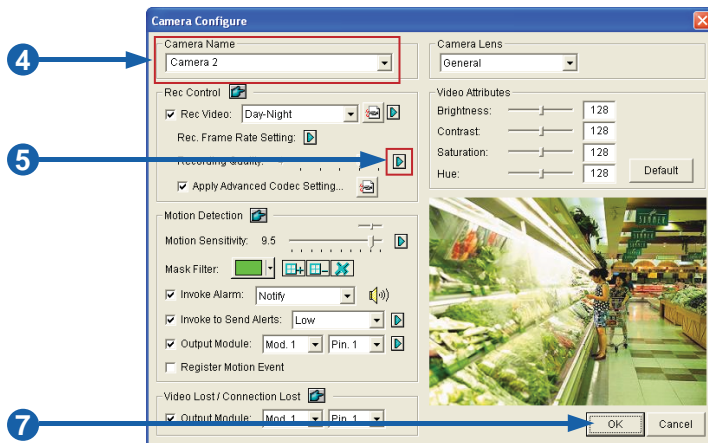
You can set each camera's recording resolution individually.

1. Click  on the main screen, click **A/V Setting** and select **Video Source**.
2. Select the desired video resolution from the drop-down list, and click **OK**.




5 Set Up a Recording Schedule

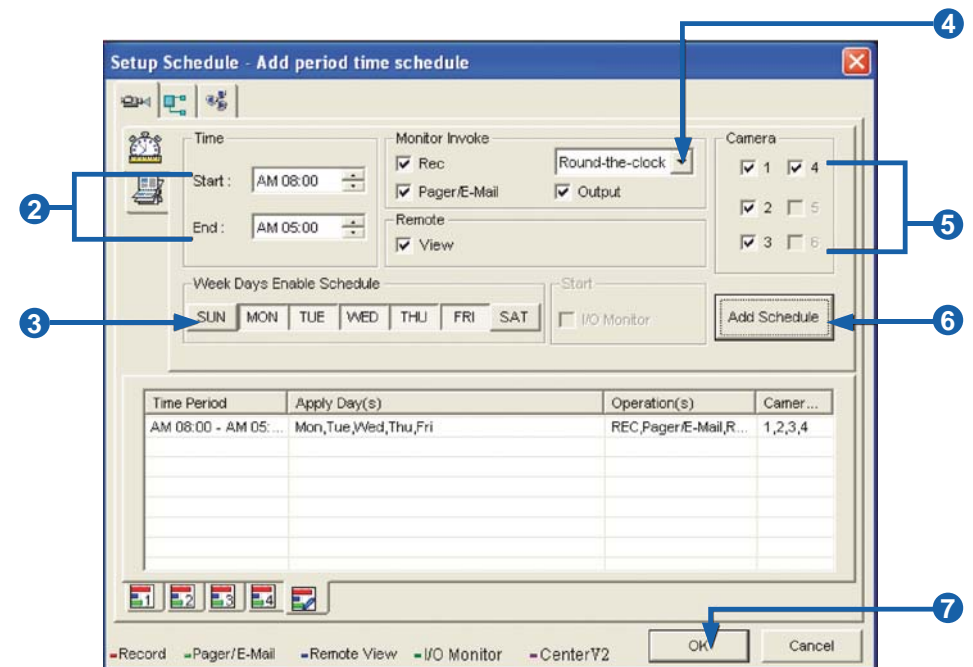
- Click  on the main screen, click **System Configure** and select **Camera Configure**.
- From the **Camera Name** drop-down list, select one camera.
- Click the arrow button next to **Recording Quality** to select the desired resolution.
- Repeat step 4 and 5 to set up each camera.
- Click **OK**.



You can program recording to turn on and off at a specific time each day.



- Click  on the main screen, and select **Schedule Edit**.
- Select or enter the Start and End time of the schedule.
- Select day(s).
- Select **Rec**, and use the drop-down list to select **Round-the-Clock** or **Motion Detect** for recording mode.
- Select camera(s).
- Click **Add Schedule**.
- Click **OK**.

For details, refer to *Recording Schedule*, Chapter 1, *DVR User's Manual* on Surveillance System Software DVD.



6 Play Back Video

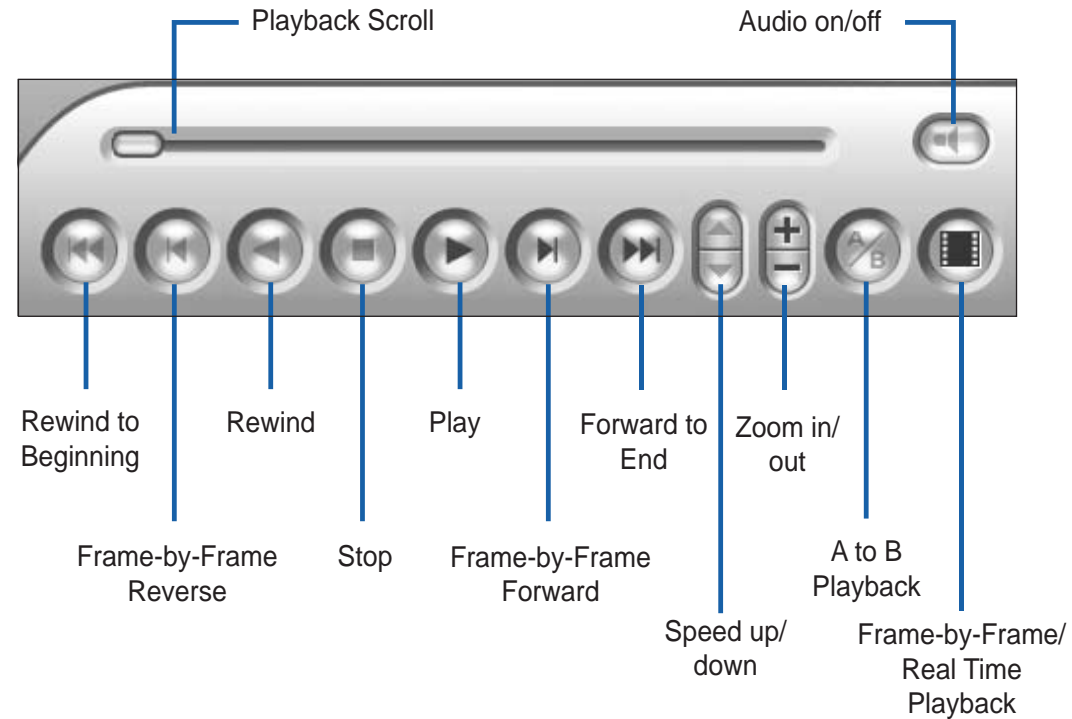
You can play back video recorded during a particular date and time.

1. Click  on the main screen, and select **Video/Audio Log**.
2. Select the camera you wish to view.
3. Select a date folder from the date tree.
4. Select a time from the Video Events list.
5. Click  to begin playback.

For details, refer to *Playing Back on ViewLog*, Chapter 4, *DVR User's Manual on Surveillance System Software DVD*.



Playback Controls





Using the Zoom

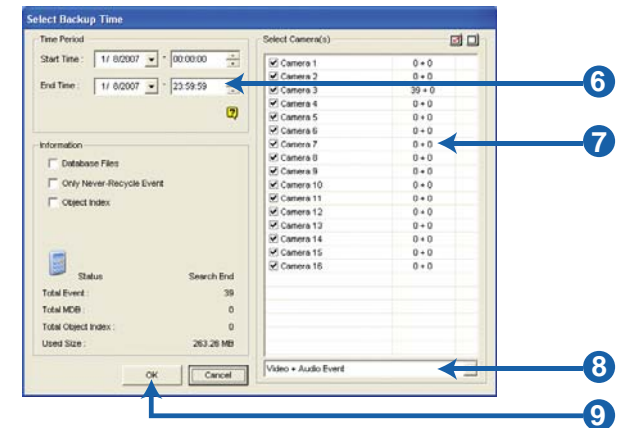
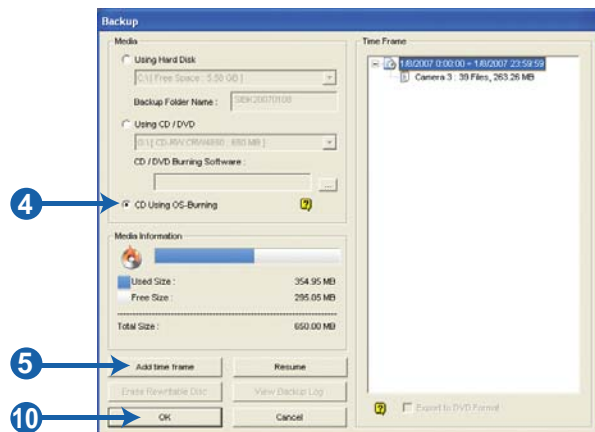
- **Zoom in:** Click the **Zoom-in** button, and then click on the area you want to magnify. Each click will increase the zoom level.
- **Zoom out:** Click the **Zoom-out** button, and then click on the image to zoom out. Each click will decrease the zoom level.

Back Up Video Files

You can back up video files of the desired time to CD / DVD.

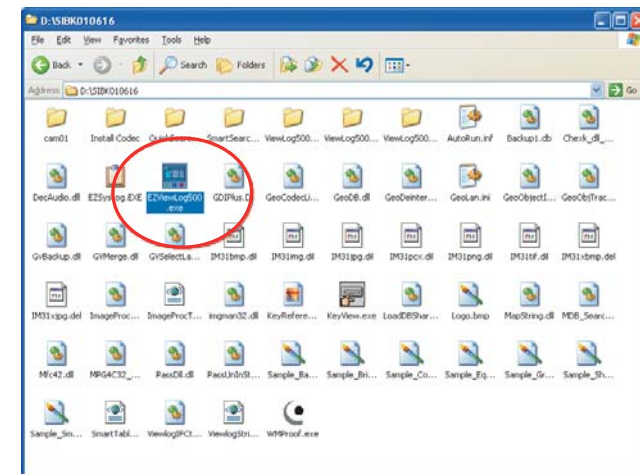
1. Insert the CD / DVD media into the drive.
2. Click  on the main screen, and select **Video/Audio Log**.
3. Click  on the functional panel.
4. Select **CD Using OS-Burning** to burn files with the inbuilt software of Windows.
5. Click **Add time frame**.
6. Enter the Start Time and End Time for backup.
7. Select the desired camera(s) for backup. The number of video and audio files of each camera is indicated respectively, e.g. "Camera 3 39+0" means the camera 3 has 39 video files and 0 audio file.
8. Select the types of events for backup, e.g. video, audio or both together.
9. Click **OK** to add the time frame. You can repeat steps 5-8 to create up to 10 time frames.
10. Click **OK** to start burning.

For details, refer to *Backing Up Video Files Using ViewLog*, Chapter 5, *DVR User's Manual* on Surveillance System Software DVD.



Playing Backup Files

Open the backup folder, run **EZViewLog500.exe**, and then follow the instructions in the *Play Back Video* section.

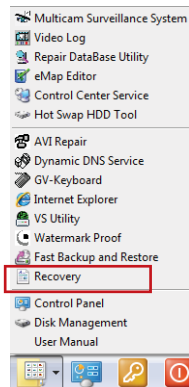


Restore System

You can restore preinstalled files once they are damaged by running the recovery from the hidden partition. To restore the operating system and all preinstalled software, follow the steps below.

Note: After recovery, you need to re-install all settings and passwords. But the recovery will not delete your recording files saved in the other partitions since it only reformats the partition C.

1. On the GV-Desktop, click the **Program** button and select **Recovery**. The system will run this command by itself.



2. Restart the GV-Tower DVR/NVR System.
3. Press **F11** button several times to avoid accessing the system.

4. When the below screen appears, press the **Recovery** button.



5. When the restoring process is completed, the screen will automatically show the GV-Desktop. And the system will restore the default values.



9F, No. 246, Sec. 1, Neihu Rd.,
Neihu District, Taipei, Taiwan
Tel: +886-2-8797-8376
Fax: +886-2-8797-5861
dvrssystem@geovision.com.tw
<http://www.geovision.com.tw>