



GV-IP Device Integration Patch

for GV-DVR/NVR V8.5.7.0 and other GV-Software

Article ID: GV1-13-08-12-n

Release Date: 08/12/2013

Applied to

GV-IP Devices

- GV-BL1500 / 1510
- GV-BX1500
- GV-MFD1501 Series

GV-Software

- GV-DVR/NVR V8.5.7.0
- GV-Control Center V3.1.0.0
- GV-Recording Server V1.2.0.0
- GV-Mobile Server V1.4.1.0
- GV-Redundant Server / GV-Failover Server V1.0.2.0
- GV-GIS V3.1.1.0

How to Install Patch Files

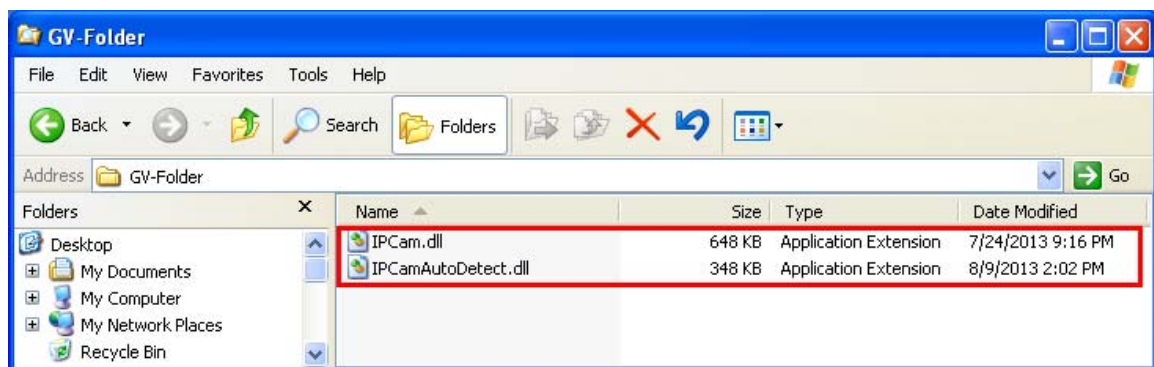
To connect to the new GV-IP devices listed above on the listed GV-Software, patch files are required. There are two ways to obtain the patch files:

- Download the patch files from the link below and unzip the downloaded file.
http://ftp.geovision.tw/ftp/AlexHuang/patch/201300809/IPCamera_Patch.zip
- Insert the supplied Software DVD and click the **IP Camera Patch Files** folder.



There are two folders in the patch folder: **GV-Folder** and **For Windows**. Follow the steps below to install patch files.

1. Copy the content of the **For Windows** folder and paste them in C:\WINDOWS\.
2. For GV-System and GV-Recording Server, copy the content of the **GV-Folder** folder and paste them to the GV-Software folder.
3. For GV-Control Center, open the **GV-Folder** folder and copy **IPCam.dll** and **IPCamAutoDetect.dll** to the GV-Control Center folder.



4. For GV-GIS, open the **GV-Folder** folder and copy **IPCamAutoDetect.dll** to the GV-GIS folder.
5. If a message pops up to inform you a file with the same name already exists in the folder, click **Yes** to replace the existing file.
6. Restart the GV-Software.