

1.4 WebCam Live View Limitations

When you want to access the WebCam live view, note the following limitations on different versions of Windows operating systems and Internet Explorer.

- **Windows 7 and Vista**

For the user of Windows 7 and Vista, disable the **User Account Control** settings; otherwise, the OCX components cannot be downloaded and you cannot access the WebCam server.

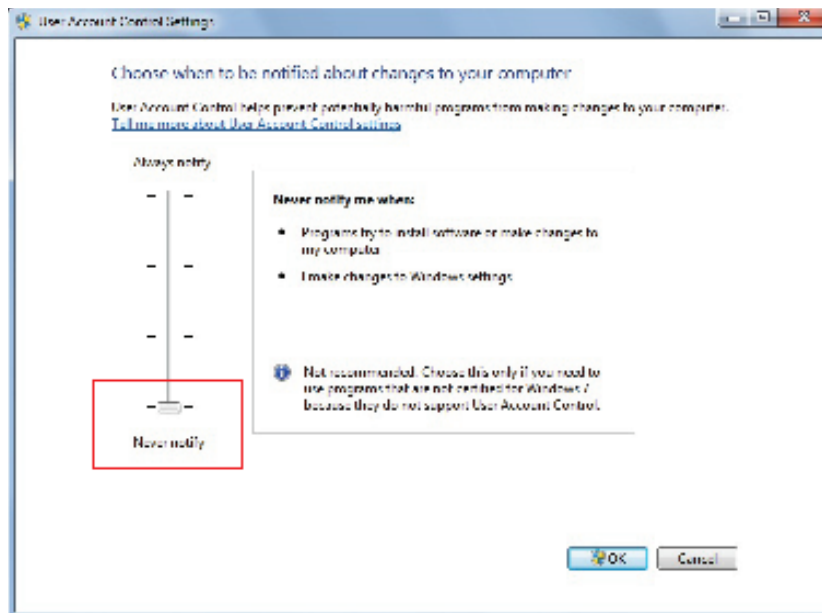


Figure 1

- **Internet Explorer 8**

For the user of Internet Explorer 8, follow the instructions below to adjust the Security Settings; otherwise the message of *Password Error* will pop up repeatedly and you cannot access the WebCam server.

1. To access the Security Settings, click the **Tools** button on the IE browser, select **Internet Options**, select **Security**, select **Custom Level**.
2. Enable **Allow previously unused ActiveX controls to run without prompt**.
3. Disable **Only allow approved domains to use Active without prompt**.