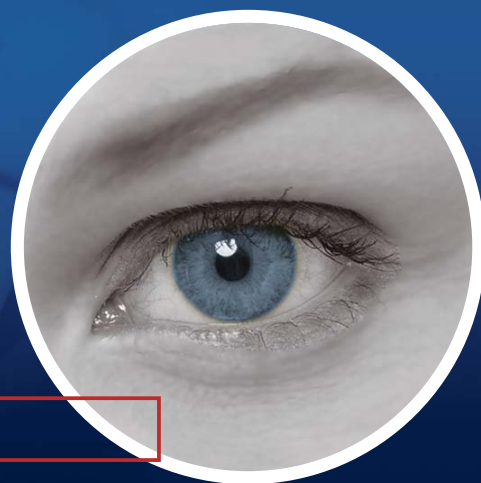


# **Surveillance System**

*New Feature Guide V8.5.9.0*



*The Vision of Security*



**© 2014 GeoVision, Inc. All rights reserved.**

Under the copyright laws, this manual may not be copied, in whole or in part, without the written consent of GeoVision.

Every effort has been made to ensure that the information in this manual is accurate. GeoVision, Inc. makes no expressed or implied warranty of any kind and assumes no responsibility for errors or omissions. No liability is assumed for incidental or consequential damages arising from the use of the information or products contained herein. Features and specifications are subject to change without notice.

GeoVision, Inc.  
9F, No. 246, Sec. 1, Neihu Rd.,  
Neihu District, Taipei, Taiwan  
Tel: +886-2-8797-8377  
Fax: +886-2-8797-8335  
<http://www.geovision.com.tw>

Trademarks used in this manual: *GeoVision*, the *GeoVision* logo and *GV* series products are trademarks of GeoVision, Inc. *Windows* and *Windows XP* are registered trademarks of Microsoft Corporation.

January 2014

# Feature Guide for

## V8.5.9 GeoVision Surveillance System

This Guide provides an overview of key features in V8.5.9 GV-System. It also includes information about how the features differ from similar features in earlier versions.

### Cards Supported

V8.5.9 only supports the following GV video capture cards:

- GV-600(S) V3.20 and later
- GV-650(S) V3.30 and later
- GV-800(S) V3.30 and later
- GV-804A V3.10 and later
- GV-600A, GV-600B
- GV-650A, GV-650B
- GV-800A, GV-800B
- GV-900A
- GV-1120, GV-1120A, GV-1120B
- GV-1240, GV-1240A, GV-1240B
- GV-1480, GV-1480A, GV-1480B
- GV-3008
- GV-4008, GV-4008A
- GV-5016
- GV-SDI-204

Note that GV-600 (V4), GV-650 (V4) and GV-800 (V4) and GV-804 (V4) Cards are renamed to GV-600A, GV-650A, GV-800A and GV-804A. These V4 and A Cards are the same video capture cards.

# Contents

<b>Cards Supported .....</b>	<b>i</b>
------------------------------	----------

<b>Contents .....</b>	<b>ii</b>
-----------------------	-----------

1. Supporting New IP Devices .....	1
2. Setting the Infogenesis POS Device on POS Text Sender .....	2
3. Hiding the Source View of a Single View Fisheye Channel .....	3
4. Saving Dewarpped Fisheye Views in 1280 x 720 and 1920 x 1080 .....	4

## 1. Supporting New IP Devices

The following GeoVision and third-party IP devices will now be supported in V8.5.9.

- **Audio:** A “O” mark indicates the GV-System supports the two-way audio communication with the device; “X” indicates the function is unavailable in the device.
- **Codec:** The video codec supported by GV-System are listed.
- **PTZ:** A “O” mark indicates the GV-System supports the PTZ function of the device; “X” indicates the function is unavailable in the device.

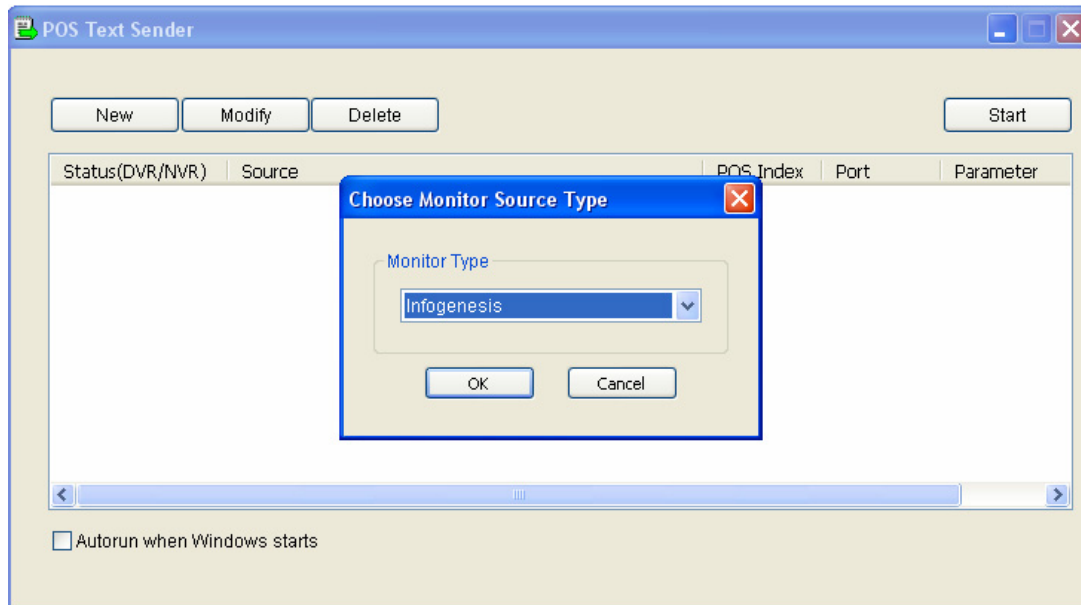
Brand	Model	Audio	Codec	PTZ
Avigilon	1.0-H3M-DO1*	X	H.264	X
GeoVision	GV-BL2500	○	H.264 / MJPEG	X
	GV-BL2510	○	H.264 / MJPEG	X
	GV-BX2500	○	H.264 / MJPEG	X
	GV-EBL1100	X	H.264 / MJPEG	X
	GV-EBX1100	○	H.264 / MJPEG	X
	GV-EFD1100	○	H.264 / MJPEG	X
	GV-FD2500	○	H.264 / MJPEG	X
	GV-FD2510	○	H.264 / MJPEG	X
	GV-MFD2501	○	H.264 / MJPEG	X
	GV-VD1530	○	H.264 / MJPEG	X
	GV-VD1540	○	H.264 / MJPEG	X
	GV-VD2430	○	H.264 / MJPEG	X
	GV-VD2440	○	H.264 / MJPEG	X
	GV-VD2500	○	H.264 / MJPEG	X
	GV-VD2530	○	H.264 / MJPEG	X
	GV-VD2540	○	H.264 / MJPEG	X
	GV-VD3430	○	H.264 / MJPEG	X
	GV-VD3440	○	H.264 / MJPEG	X
	GV-VD5340	○	H.264 / MJPEG	X
	GV-UBL2511	X	H.264 / MJPEG	X

### Note:

1. IP devices marked with \* were tested using ONVIF connection.
2. GV-EBL1100, GV-EBX1100 and GV-EFD1100 do not support PSIA.

## 2. Setting the Infogenesis POS Device on POS Text Sender

A new POS device Infogenesis can now be set up on the POS Text Sender of GV-System V8.5.9. With a POS device's send port, receive port and terminal ID (device name) information, you can set up the POS Text Sender and overlay POS data on GV-System.

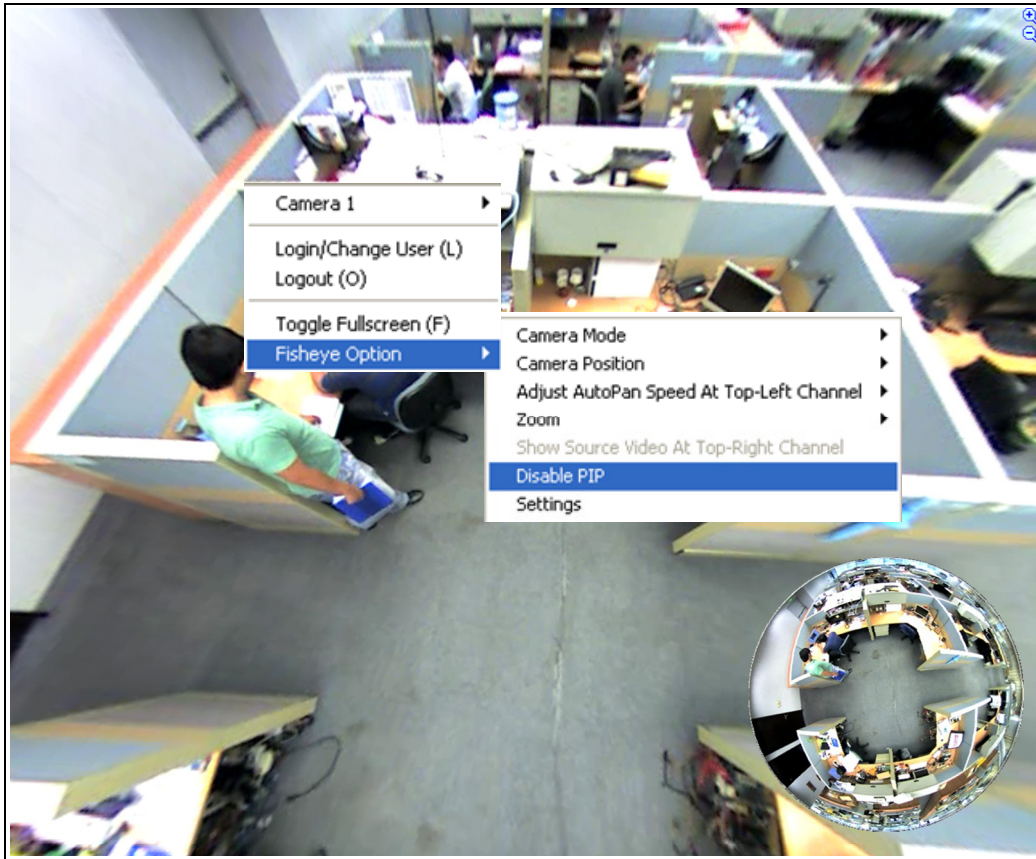


**Figure 1-1**

For details on setting up the POS device, see *7.1 Text-Mode POS Device* and *7.3 POS Device Setup*, Chapter 7, in *GV-DVR User's Manual*.

### 3. Hiding the Source View of a Single View Fisheye Channel

With GV-System V8.5.9, the source view on the bottom-right corner of your fisheye view (in Single View mode) can now be hidden. To access this feature, right-click the fisheye view, select **Fisheye Option** and then select **Disable PIP**.

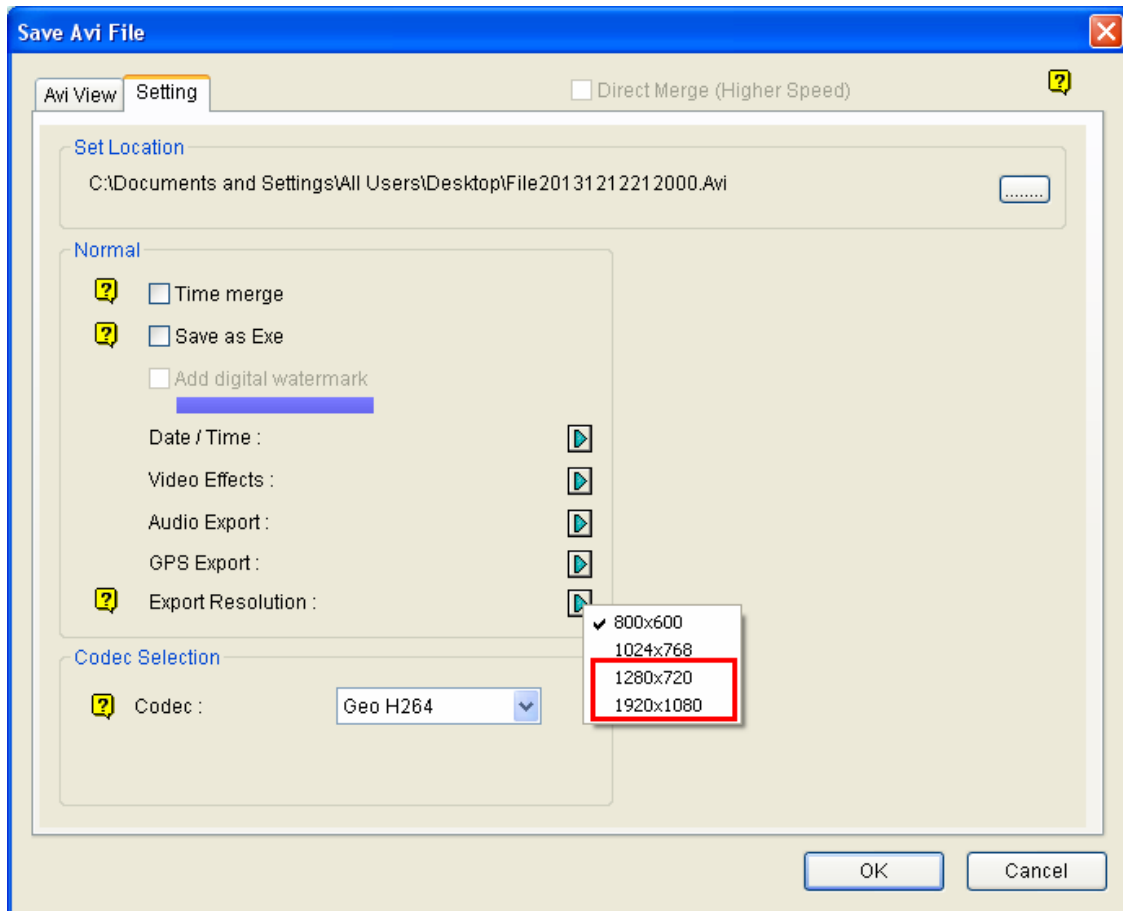


**Figure 1-2**

For details on fisheye view, see 3.22 *Fisheye View*, Chapter 3, in *GV-DVR User's Manual*.

#### 4. Saving Dewarpped Fisheye Views in 1280 x 720 and 1920 x 1080

Dewarpped GV-Fisheye view can now be saved at 1280 x 720 and 1920 x 1080. To access this feature, click the **Save as Avi** button on ViewLog window and select **Setting** tab:



**Figure 1-3**

For details on exporting video files, see *4.1.6 Merging and Exporting Video*, Chapter 4, in *GV-DVR User's Manual*.