

Quick Start Guide



GV-NVR System Lite V2

The Vision of Security

Thank you for purchasing GV-NVR System Lite V2. This guide is designed to assist the new user in getting immediate results from the GV-NVR System Lite V2. For advanced information on how to use the GV-NVR System Lite V2, please refer to *GV-NVR System Lite V2 User's Manual* (GV-Desktop < **Program** button < **User Manual**).

© 2012 GeoVision, Inc. All rights reserved.
All GeoVision Products are manufactured in Taiwan.

2012/06
English
NVRLV2V10-QG-A

1

Basic Installation

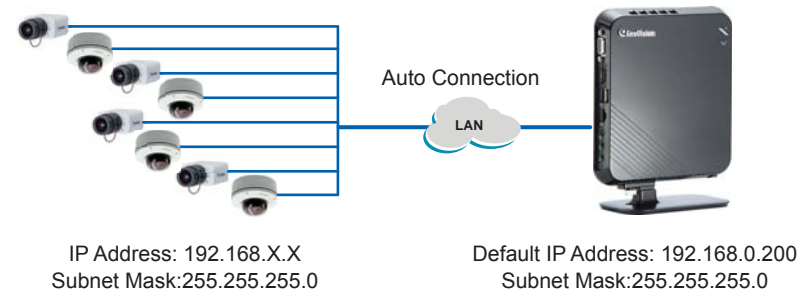


1. Connect the speakers to the unit.
2. Connect the microphone to the unit.
3. Optionally connect the GV-USB Dongle for third-party IP cameras' connection.
4. Using the USB cables, connect a keyboard and a mouse to the unit.



Right Side

5. There are two ways to connect the monitor to the unit.
 - Using the VGA cable, connect the computer monitor to the unit.
 - Using HDMI cable, connect the HDTV to the unit.
6. Using the RJ-45 cable, connect a switch or a hub to the unit.
7. Using the supplied power adapter, connect the unit to the power outlet.



For automatic setup, connect GV IP cameras under the same LAN with the GV-NVR System Lite V2. After the power is turned on, the GV-NVR System Lite V2 will search for GV IP cameras with the default IP address, ID and password. The GV IP cameras will be displayed on the main screen without any further configuration.

- For automatic setup, see 5. *Basic Configuration* in the *Quick Start Guide*.
- For manual setup, see 3.4 *Setting Up IP Cameras* in the *GV-NVR System Lite V2 User's Manual*.
- To connect third-party IP cameras, see *Setting Up Third-Party IP Cameras* in the *Quick Start Guide*.

IMPORTANT: For automatic setup, make sure all the devices (GV IP cameras and GV-NVR System Lite V2) are connected under the same LAN before you turn on the power of GV-NVR System Lite V2.

Note: The monitor you use must be capable of having a screen resolution of 1280 x 1024 and display color of 32 bits. And the HDTV must be capable of Full HD 1080P resolution.



Packing List

IMPORTANT: Please keep the original carton and all packing materials for future shipping need.

- GV-NVR System Lite V2 x 1
- AC Power Cord x 1
- Power Adapter x 1
- Standing Mount Kit (1 Base Stand and 1 Base Stand Screw included) x 1
- VESA Monitor Mount Kit (1 Stand Screw and 4 Fix Screws included) x 1
- GV-NVR System Lite V2 Quick Start Guide x 1
- GV-NVR Lite V2 Dongle for third-party IP cameras (optional)



Supported IP Cameras and Dongle Options

The GV-NVR Lite V2 supports connections to GV IP cameras and third-party IP cameras. You can adopt one of the following combinations:

IP cameras excluding GV Fisheye cameras

- Connect up to 16 GV IP cameras. See **Section A**.
- Connect up to 8 third-party cameras (of 640 x 480 resolution, H.264). See **Section C**.
- Connect up to 6 third-party cameras (of 1280 x 720 resolution, H.264). See **Section C**.
- Connect up to a total of 8 cameras from GV IP cameras and third-party IP cameras (of 640 x 480 resolution, H.264). See **Section A and C**.
- Connect up to a total of 4 cameras from GV IP cameras and third-party IP cameras (of 1280 x 720 resolution, H.264). See **Section A and C**.

IP cameras including GV Fisheye cameras

- Connect 1 GV Fisheye 1.3 MP camera and up to 15 other GV IP cameras. See **Section A and B**.
- Connect 1 GV Fisheye 4 MP camera and up to 11 other GV IP cameras. See **Section A and B**.
- Connect 1 GV Fisheye 5 MP camera and up to 8 other GV IP cameras. See **Section A and B**.
- Connect 1 GV Fisheye 1.3 MP camera and up to 5 third-party IP cameras (of 640 x 480 resolution, H.264). See **Section B and C**.
- Connect 1 GV Fisheye 4 MP camera and up to 4 third-party IP cameras (of 640 x 480 resolution, H.264). See **Section B and C**.
- Connect 1 GV Fisheye 5 MP camera and up to 3 third-party IP cameras (of 640 x 480 resolution, H.264). See **Section B and C**.
- Connect 1 GV Fisheye 1.3 MP camera with up to 4 third-party IP cameras (of 1280 x 720 resolution, H.264). See **Section B and C**.
- Connect 1 GV Fisheye 4 MP camera with up to 3 third-party IP cameras (of 1280 x 720 resolution, H.264). See **Section B and C**.
- Connect 1 GV Fisheye 5 MP camera with up to 2 third-party IP cameras (of 1280 x 720 resolution, H.264). See **Section B and C**.

Section A		Dual Stream Resolution		Max. Frame	Total Frame
		Stream 1 (H.264)	Stream 2 (MPEG4)	Rate	Rate
GV IP Camera	D1	704 x 480	352 x 240	30 fps	480 fps
	D1	704 x 576	352 x 288	25 fps	400 fps
	1 MP	1280 x 720	448 x 252	15 fps	240 fps
	1.3 MP	1280 x 1024	320 x 256	15 fps	240 fps
	2 MP	1920 x 1080	448 x 252	10 fps	160 fps
	3 MP	2048 x 1536	320 x 240	10 fps	160 fps
	4 MP	2048 x 1944	640 x 480	10 fps	160 fps
	5 MP	2560 x 1920	320 x 240	10 fps	160 fps

4 Mounting Method

Standing Mount



1. Attach the base stand to the unit.
2. Tighten the base stand screw.

Monitor Mount

1. Using the 4 fix screws, tighten the VESA monitor mount on the back of the computer monitor.
2. Peel off the liner from the Velcro.



3. Attach the unit to the VESA monitor mount and tighten the stand screw.



Section B		Single Stream Resolution (H.264)	Max. Frame Rate	Total Frame Rate
GV Fisheye	1 MP	1280 x 1024 (4:3)	7 fps	21 fps
	4 MP	2048 x 1944 (4:3)	6 fps	6 fps
	5 MP	2560 x 1920 (4:3)	6 fps	6 fps
Section C		Single Stream Resolution (H.264)	Max. Frame Rate	Total Frame Rate
Third-Party Camera		640 x 480	30 fps	240 fps
		1280 x 720	15 fps	90 fps

Note:

GV IP cameras

1. For GV IP cameras (excluding GV Fisheye), stream 1 is used for recording and single view, and stream 2 for live viewing in multi divisions.
2. The default resolution for stream 1 is set at its maximum. Several resolution, aspect ratio and codec options are available for each IP camera, except GV Fisheye cameras.
3. It is highly recommended to set the panel resolution to 1280 x 1024 (default) or lower when connecting to GV Fisheye to get better CPU performance.

Third-party cameras

4. For third-party cameras, be sure the resolution and codec are configured as specified above to achieve the best performance and maximum frame rate. To find the supported third-party cameras, go to http://www.geovision.com.tw/english/4_21.asp.

Frame Rate

5. Total Frame Rate equals to the Max. Frame Rate multiplies the supported channel numbers.
6. If you record the images, access live view and see the playback simultaneously, the CPU loading will increase massively. Therefore, the frame rates may drop.

GV-NVR System Lite Dongle

A dongle is required when connecting to third-party IP cameras.

Dongle Options: 1, 2, 4, 6 or 8 IP channels.

5 Basic Configuration

After you have installed the necessary cables and IP cameras, you are ready to display the channels on GV-NVR System Lite V2.

For details, see *3.4 Setting Up IP Cameras* in the *GV-NVR System Lite V2 User's Manual*.

Assigning the IP Address Automatically

1. Power on the GV-NVR System Lite V2. The GV IP cameras with the default IP address (192.168.0.10), ID (admin) and password (admin) are detected, this message appears.



2. Click **OK**. The GV-NVR System Lite V2 will assign unused IP addresses and connect to each of the GV IP camera in the form of 192.168.X.X. The channel will then be displayed on the main screen.

Note:

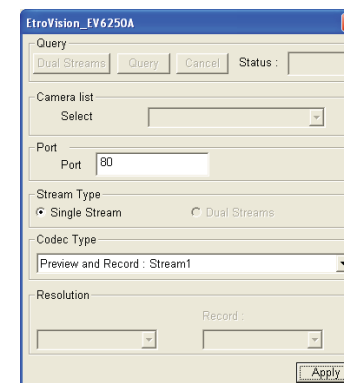
1. You can change the automatically assigned IP address of a GV IP camera. See *Changing the IP address of the GV IP Cameras* later in the *Quick Start Guide*.
2. If you select **Cancel** for manual IP assignment, see *3.4 Setting Up IP Cameras* in the *GV-NVR System Lite V2 User's Manual*.

Setting Up Third-Party IP Cameras

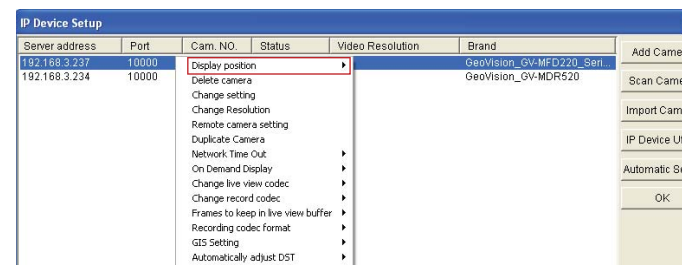
1. On the main screen, click the **Configure** button, select **System Configure**, and click **IP Camera Install**.
2. Click the **Scan Camera** button.
3. Click the **Start Scan** button. The IP devices under the same LAN with the GV-NVR System Lite V2 are searched and listed.
4. Double-click the IP camera.
5. Type the ID and password of the IP camera and click **OK**.

6. Click **Query** to detect the IP camera again. The settings is accessible on this interface may vary depending on the camera brand.

- **Port:** Video streaming port number.
- **Stream Type:** The GV-NVR System Lite V2 only supports a single stream when connecting to a third-party IP camera.
- **Codec Type:** It is highly recommended to choose H.264 for best performance.



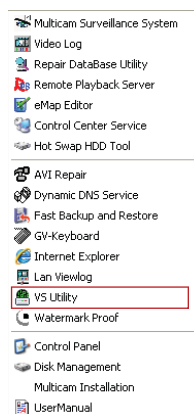
7. Click **Apply**. The IP camera is added to the IP Device Setup window.
8. Click the listed camera, and select **Display position** to map the IP camera to a channel on the GV-NVR System Lite V2.



9. The Status column now should display "Connected". Click **OK**. The channel should be displayed on the main screen.

Changing the IP Address of GV IP Cameras

1. On the GV-Desktop, click the **Program** button and select **VS Utility**. The GV IP Device Utility appears and automatically detects the GV IP cameras on the LAN.
2. Double-click the found GV IP camera in the list.
3. Type the user name and password of the GV IP camera. By default both values are **admin**.
4. Type the new IP information.
5. Click **OK**. The new IP address is updated to the camera.

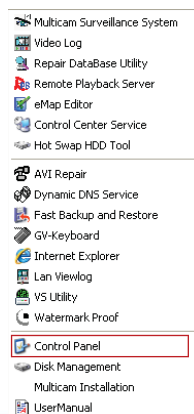


Changing the IP Address of GV-NVR System Lite V2

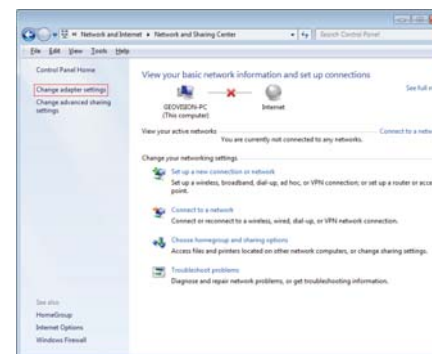
The GV-NVR System Lite V2 has a default IP address of 192.168.0.200 for connecting with GV IP cameras automatically. You can also change the IP address of GV-NVR System Lite V2 by following the steps below.

Note: After you change the IP address of GV-NVR System Lite V2, you should also change the IP addresses of GV IP cameras to the same network; otherwise, the GV-NVR System Lite V2 will not detect the cameras for automatic connection.

1. On the GV-Desktop, click the **Programs** button, and select **Control Panel**.
2. Type the ID and password. The default ID and password are "0000". The Control Panel window appears. Click the **View network status and tasks** option under the **Network and Internet** setting.



3. Click the **Change the adapter settings** option.

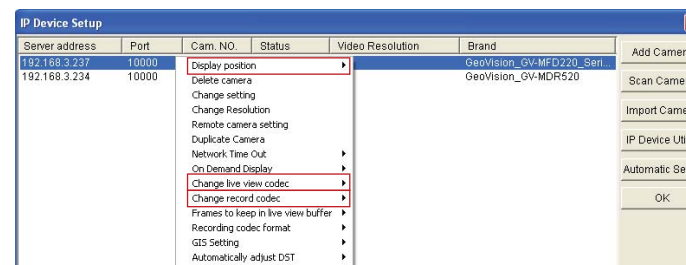


5. In the Local Area Connection Properties dialog box, select **Internet Protocol (TCP/IP)** and click **Properties**.
6. Select **Use the following IP address**, type the new IP information, and click **OK** to finish the setting.

Changing Codec and Resolution of GV IP Cameras

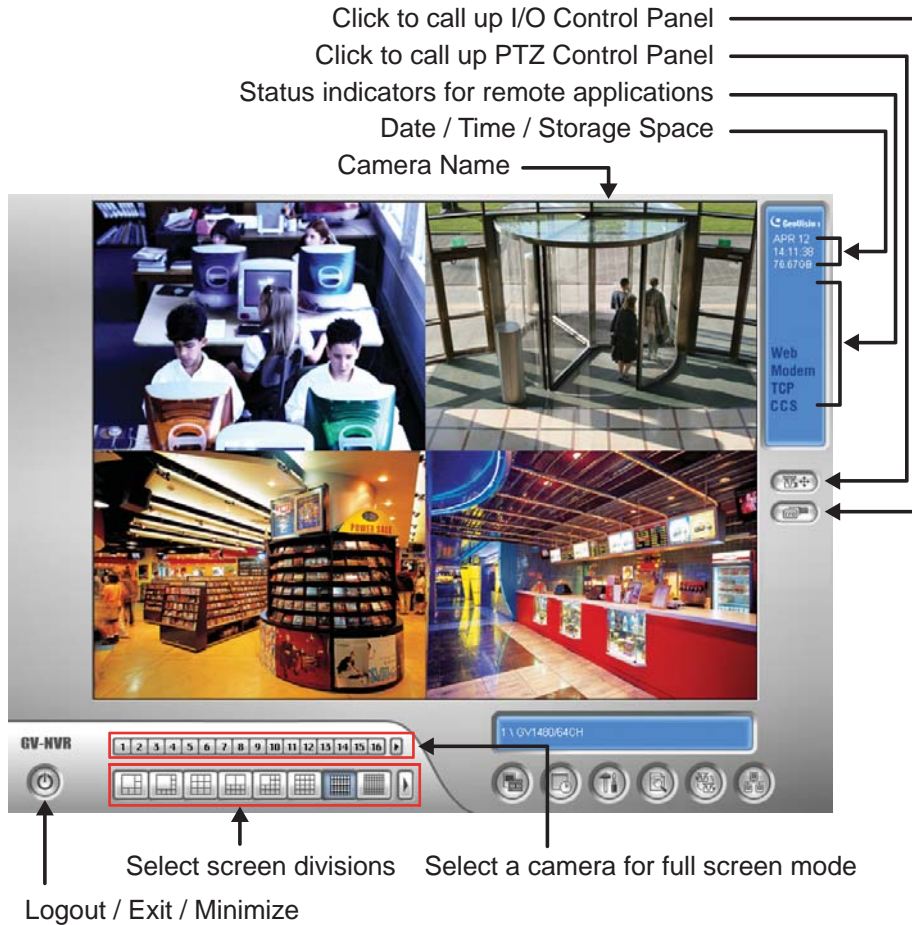
Several resolution, aspect ratio and codec options are available for GV IP Cameras, except GV Fisheye cameras.

1. On the main screen, click the **Configure** button, select **System Configure** and click **IP Camera Install**.
2. Click the listed camera, and select **Change live view codec**, **Change record codec** or **Change Resolution**.



Continued on the reverse >>>>>

6 Main Screen



Start/stop recording



Set up recording schedules



Access system settings



Access ViewLog to play back video



Start/stop screen rotation



Access remote applications

Formatting the External Hard Drive

The GV-NVR System Lite V2 records audio and video to the internal hard drive. You can also use an external hard drive to expand recording space. You must format the hard drive before you can use it.

To format an external hard drive, use Windows's **Disk Management**. To start initializing and formatting an external hard drive, click the **Programs** button on the GV-Desktop, and select **Disk Management**. The feature is protected by an ID and a password. The default ID and password are "0000". For details to format an external hard drive, see 3.5 *Formatting the Hard Drive* in *GV-NVR System Lite V2 User's Manual* (GV-Desktop < **Program** button < **User Manual**).

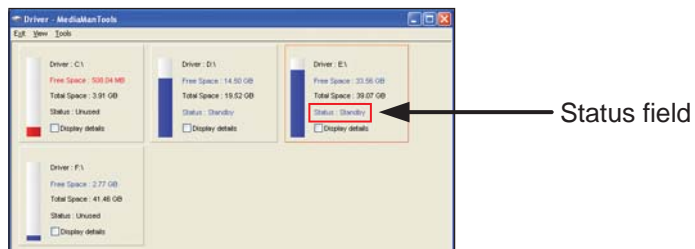
Adding the External Hard Drive to a Recording Path

Before you start recording to the external hard drive, you need to add the formatted external hard drive to the recording path.

Note: The default recording path for external hard drives starts from E:\

1. On the GV-Desktop, click the **Programs** button, and select **Hot Swap HDD Tool**.
2. Right-click the hard drive in the MediaMan Tools window, select **Add for recording**, and then select the storage group from the drop-down list. The Storage 1 is created by default.
3. Click **OK** to automatically configure the hard drive to the recording path.

4. In the MedianMan Tools window, if the hard drive is successfully added to store data, its Status field should display “Standby”.




5. To add another formatted hard drive for storage, repeat the above steps.

For details, see *3.6 Adding the External Hard Drive to the Recording Path* in *GV-NVR System Lite V2 User's Manual* (GV-Desktop < **Program** button < **User Manual**).


Renaming the Camera

You can give a new name for each camera.

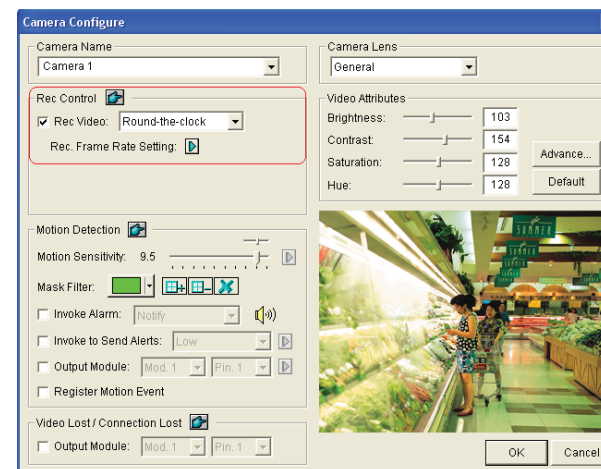
1. Click  on the main screen, click **System Configure** and select **Camera Configure**.
2. In the Camera Name field, type a new name for the camera.
3. Click **OK**.

Choosing Recording Mode

You can set each camera's recording mode individually for Motion Detection, Round-the-Clock or Day-Night.


1. Click  on the main screen, click **System Configure** and select **Camera Configure**.
2. From the Camera Name drop-down list, select one camera.
3. In the Rec Control field, select **Rec Video**, and use the drop-down list to select **Motion Detect** or **Round-the-Clock** or **Day-Night**.
4. Click **OK**.

For details on setting camera properties, refer to *Adjusting Individual Camera*, Chapter 1, *DVR User's Manual* (GV-Desktop < **Program** button < **User Manual**).

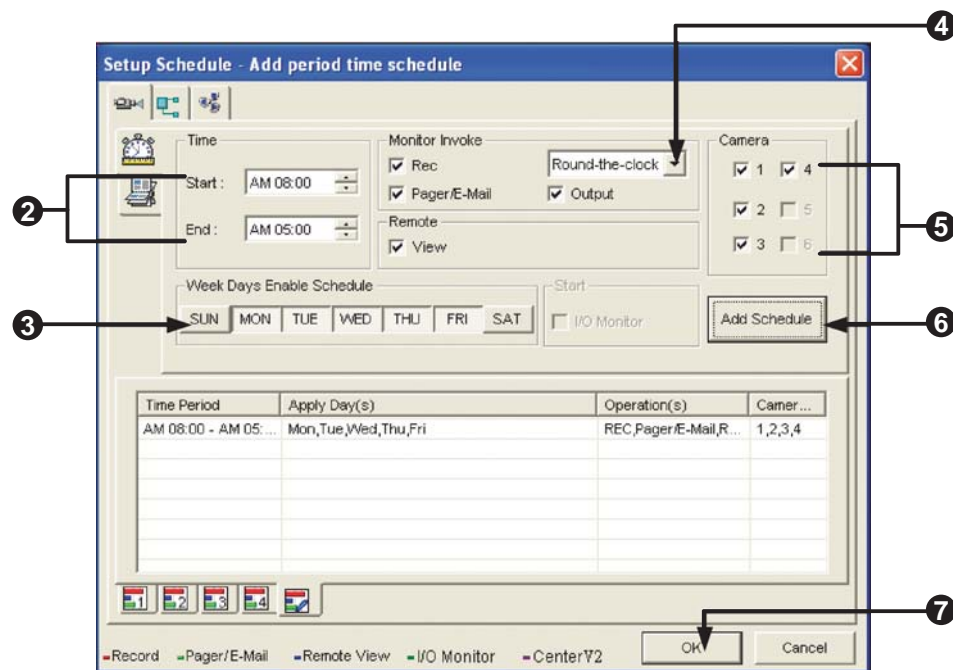


7 Recording Schedule Setup

You can program recording to turn on and off at a specific time each day.



1. Click  on the main screen, and select **Schedule Edit**.
2. Select or enter the Start and End time of the schedule.
3. Select day(s).
4. Select **Rec**, and use the drop-down list to select **Round-the-Clock** or **Motion Detect** for recording mode.
5. Select camera(s).
6. Click **Add Schedule**.
7. Click **OK**.

For details, refer to *Recording Schedule*, Chapter 1, *DVR User's Manual* (GV-Desktop < **Program** button < **User Manual**).



8 Video Playback

You can play back video recorded during a particular date and time.

1. Click  on the main screen, and select **Video/Audio Log**.
2. Select the camera you wish to view.
3. Select a date folder from the date tree.
4. Select a time from the Video Events list.
5. Click  to begin playback.

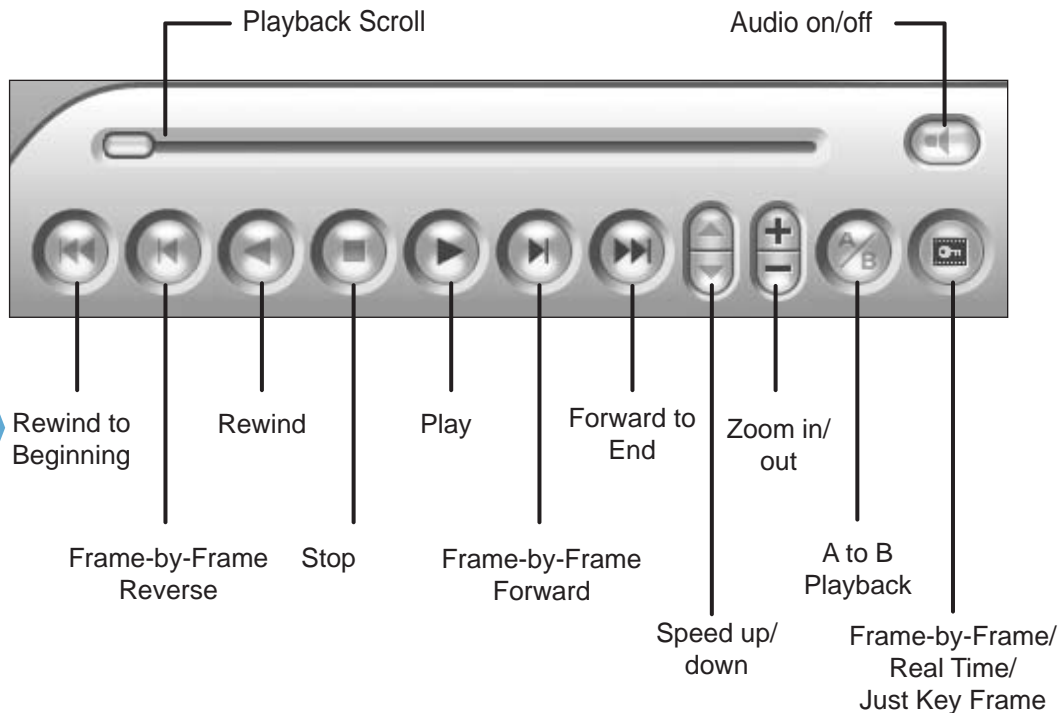
For details, refer to *Playing Back Video Files*, Chapter 4, *DVR User's Manual* (GV-Desktop < **Program** button < **User Manual**).





Video Files Backup



Playback Controls



Using the Zoom

- **Zoom in:** Click the **Zoom-in** button, and then click on the area you want to magnify. Each click will increase the zoom level.
- **Zoom out:** Click the Zoom-out button, and then click on the image to zoom out. Each click will decrease the zoom level.

You can back up video files of the desired time to CD / DVD.

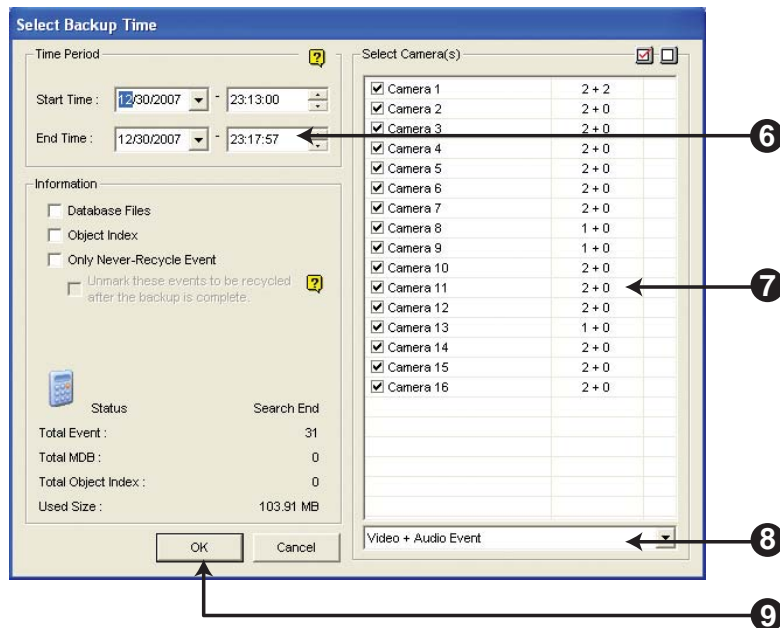
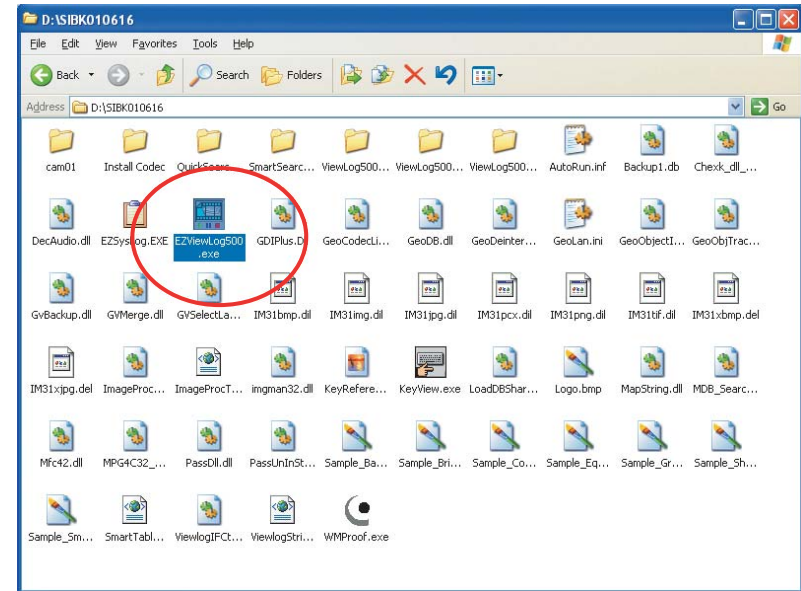
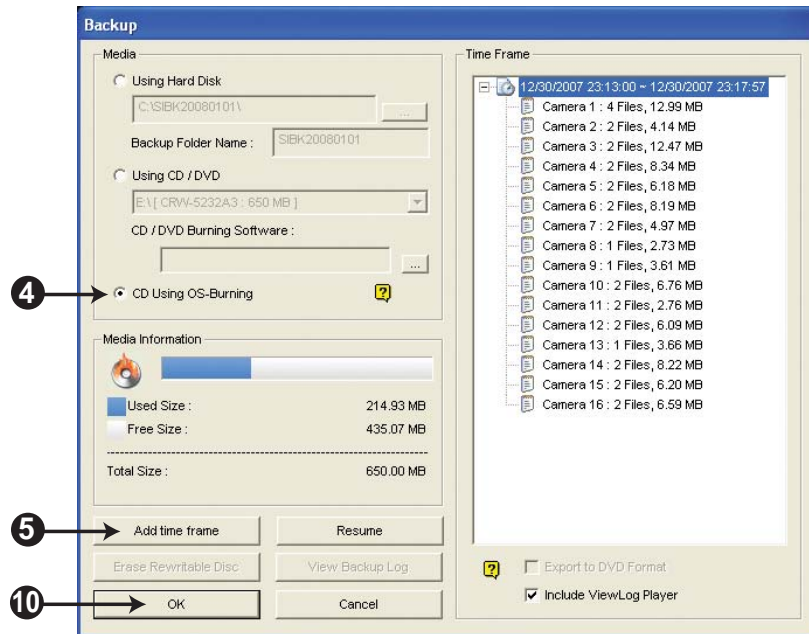
1. Insert the CD / DVD media into the drive.
2. Click  on the main screen, and select **Video/Audio Log**.
3. Click  on the functional panel.
4. Select **CD Using OS-Burning** to burn files with the inbuilt software of Windows XP.
5. Click **Add time frame**.
6. Enter the Start Time and End Time for backup.
7. Select the desired camera(s) for backup. The number of video and audio files of each camera is indicated respectively, e.g. "Camera 3 39+0" means the camera 3 has 39 video files and 0 audio file.
8. Select the types of events for backup, e.g. video, audio or both together.
9. Click **OK** to add the time frame. You can repeat steps 5-8 to create up to 10 time frames.
10. Click **OK** to start burning.

For details, refer to *Backing Up and Deleting Files*, Chapter 5, *DVR User's Manual* (GV-Desktop < **Program** button < **User Manual**).

Note: You have to connect a USB DVD RW device to the GV-NVR System Lite V2 for video files backup.

Playing Backup Files

Open the backup folder, run **EZViewLog500.exe**, and then follow the instructions in the *Video Playback* section above.

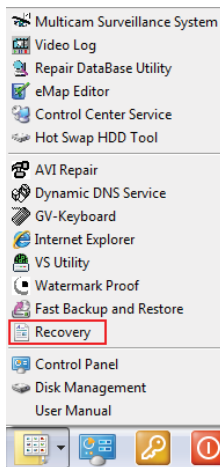


10 System Restoration

You can restore preinstalled files once they are damaged by running the recovery from the hidden partition. To restore the operating system and all preinstalled software, follow the steps below.

Note: After recovery, you need to re-install all settings and passwords. But the recovery will not delete your recording files saved in the partition D since it only reformats the partition C.

1. On the GV-Desktop, click the **Program** button and select **Recovery**.

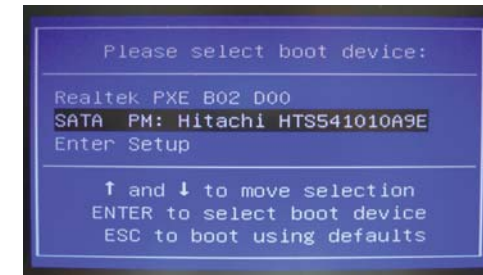


2. Restart the GV-NVR System Lite V2.
3. Press **F11** button several times to avoid accessing the system.

4. When the below screen appears, press the **Recovery** button.



5. If you can't successfully start the Recovery Wizard, you may see the below screen. Select **SATA PM** to start the Recovery Wizard.



6. When the restoring process is completed, the screen will automatically show the GV-Desktop. And the system will restore the default values.



9F, No. 246, Sec. 1, Neihu Rd., Neihu District, Taipei, Taiwan
Tel: +886-2-8797-8376 Fax: +886-2-8797-8335
dvrsystem@geovision.com.tw <http://www.geovision.com.tw>