

How to Superimpose the Recognized Plate Numbers from GV-DSP LPR on GV-Series DVR Screen

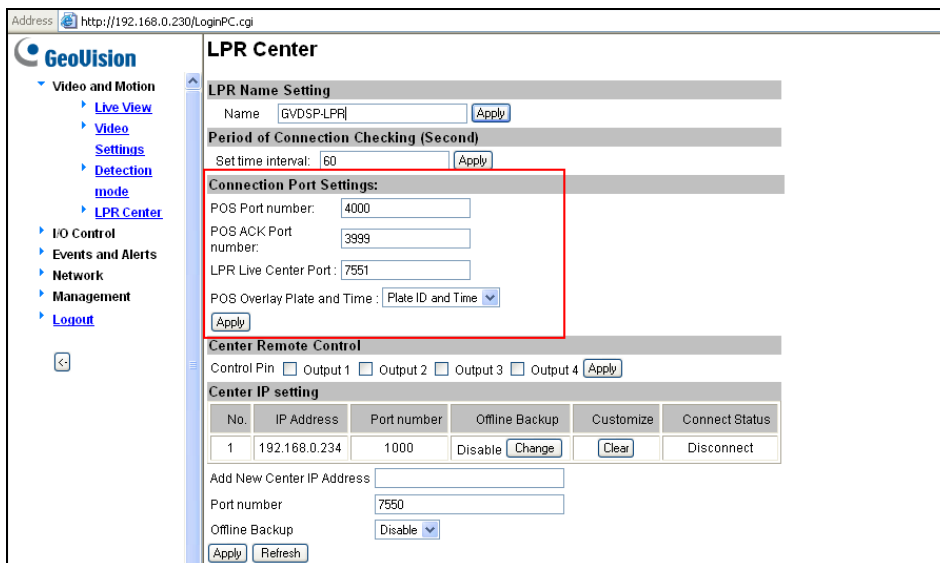
Article ID: GV-3-08-09-16

Release Date: 9/16/2008

To superimpose the recognized plate numbers from GV-DSP LPR on the screen of GV-Series DVR, you need to make configurations at both sites.

At the GV-DSP LPR site:

1. Change the login password of GV-DSP LPR by using numeric combination only.
2. On the left panel of the configuration interface, click **Video and Motion**, and select **LPR Center**.
3. In the Connection Port Settings section, keep **POS Port Number** and **POS ACK port** at default values of 4000 and 3999 respectively, unless otherwise necessary.
4. Click **Apply**.



Address: http://192.168.0.230/LoginPC.cgi

GeoVision

LPR Center

LPR Name Setting

Name: [GV-DSP-LPR] [Apply]

Period of Connection Checking (Second)

Set time interval: [60] [Apply]

Connection Port Settings:

POS Port number: [4000]

POS ACK Port number: [3999]

LPR Live Center Port: [7551]

POS Overlay Plate and Time: [Plate ID and Time] [Apply]

Center Remote Control

Control Pin Output 1 Output 2 Output 3 Output 4 [Apply]

Center IP setting

No.	IP Address	Port number	Offline Backup	Customize	Connect Status
1	192.168.0.234	1000	Disable [Change]	[Clear]	Disconnect


Add New Center IP Address: []

Port number: [7550]

Offline Backup: [Disable] [Apply] [Refresh]

Figure 1

At the GV-Series DVR site:

1. On the main screen, click the **Configure** button  , click **Accessories**, select **POS Application Setting**, and then select **POS Device Setup**.

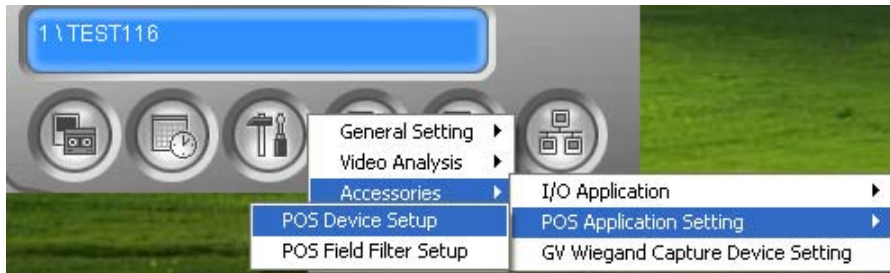


Figure 2

2. In the POS Server Setup dialog box, click **New**.

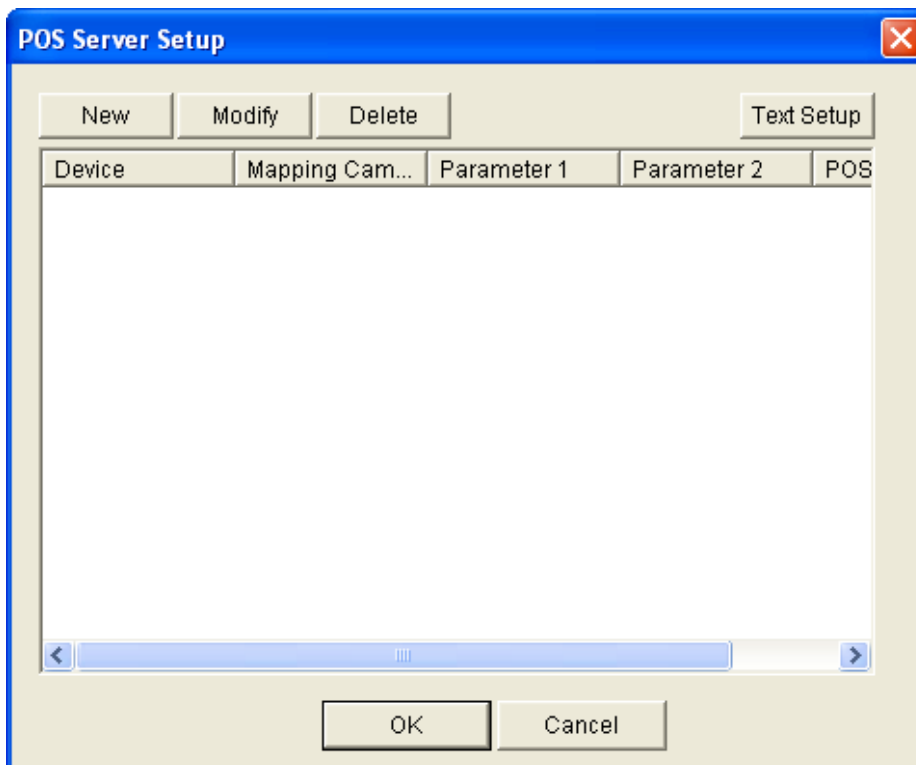


Figure 3

3. In this dialog box:

- In the Printer Type field, select **TCP/IP Port**.
- In the Mapping Camera field, select the camera that you like to superimpose the recognized plate numbers on its channel.
- In the POS Module field, select **Epson**.
- Click the **Data Capture IP Address Setting** button. The Data Capture Box IP Setting dialog box appears.

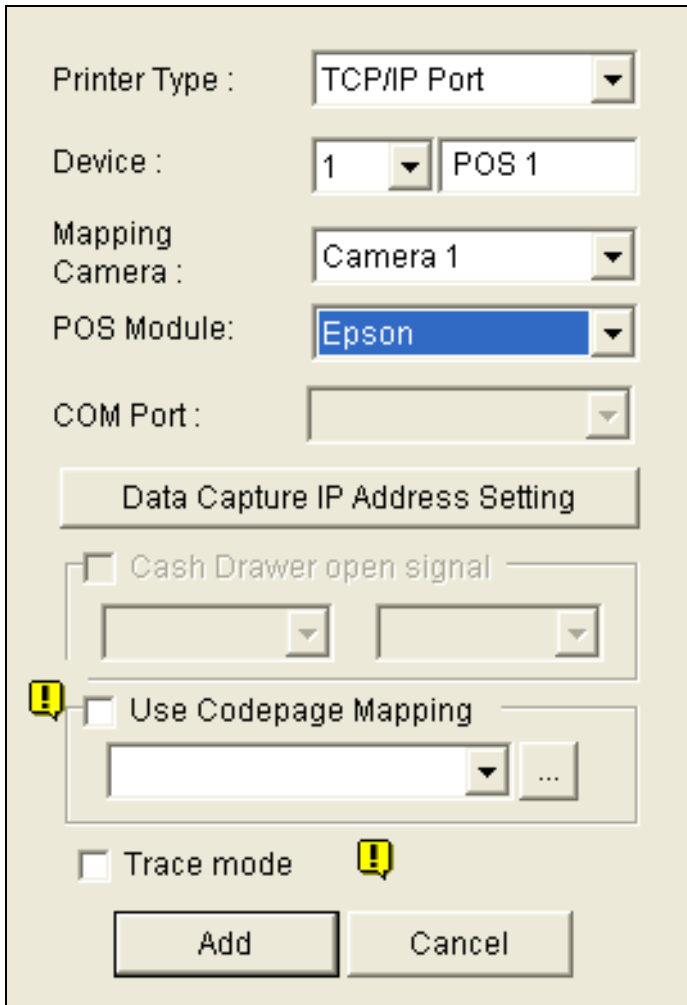
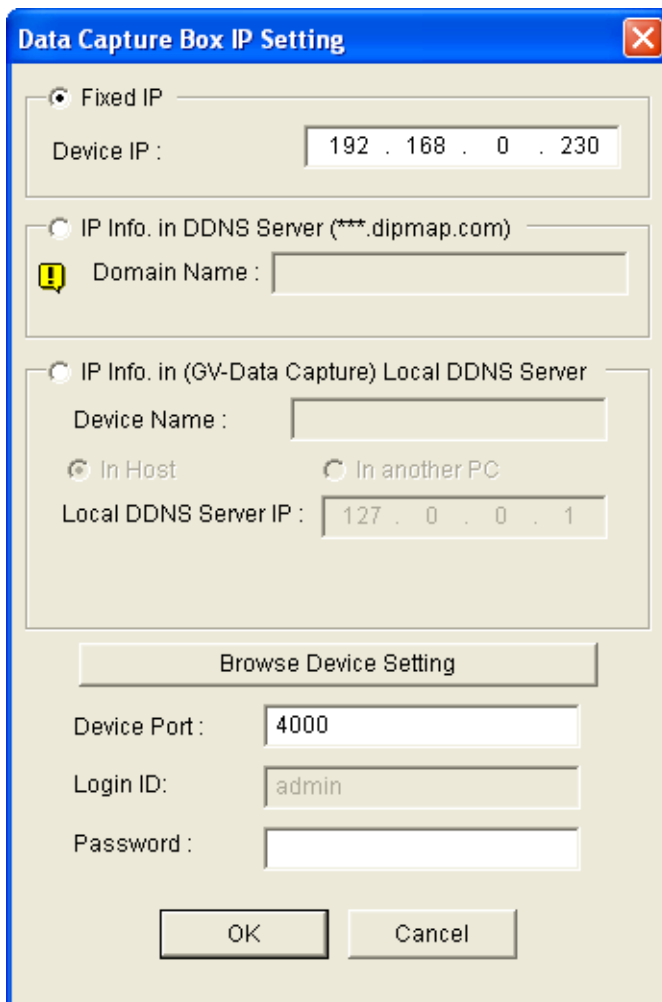


Figure 4

4. In this dialog box:

- Select **Fixed IP**, and type the IP address of GV-DSP LPR in the Device IP field.
- In the Device Port field, type the POS port number of GV-DSP LPR, or keep the default value as 4000. Refer to the POS port number at Figure 1.
- Type **Password** to log in to GV-DSP LPR.

Note: The password entry only accepts digits. However, the default password of GV-DSP LPR is **admin**. For this application to work, you need to change the default password to numeric combination on GV-DSP LPR first.



Data Capture Box IP Setting

Fixed IP

Device IP : 192 . 168 . 0 . 230

IP Info. in DDNS Server (***.dipmap.com)

! Domain Name :

IP Info. in (GV-Data Capture) Local DDNS Server

Device Name :

In Host In another PC

Local DDNS Server IP : 127 . 0 . 0 . 1

Browse Device Setting

Device Port : 4000

Login ID: admin

Password :

OK Cancel

Figure 5

5. Click **OK**, and then click **Add** in the previous dialog box (Figure 4) to return to the POS Server Setup dialog box (Figure 3).
6. Click **OK** to finish the setup.

After the settings, the recognition results will be transferred to and superimposed on the screen of GV-Series DVR. See the example below.



Figure 6