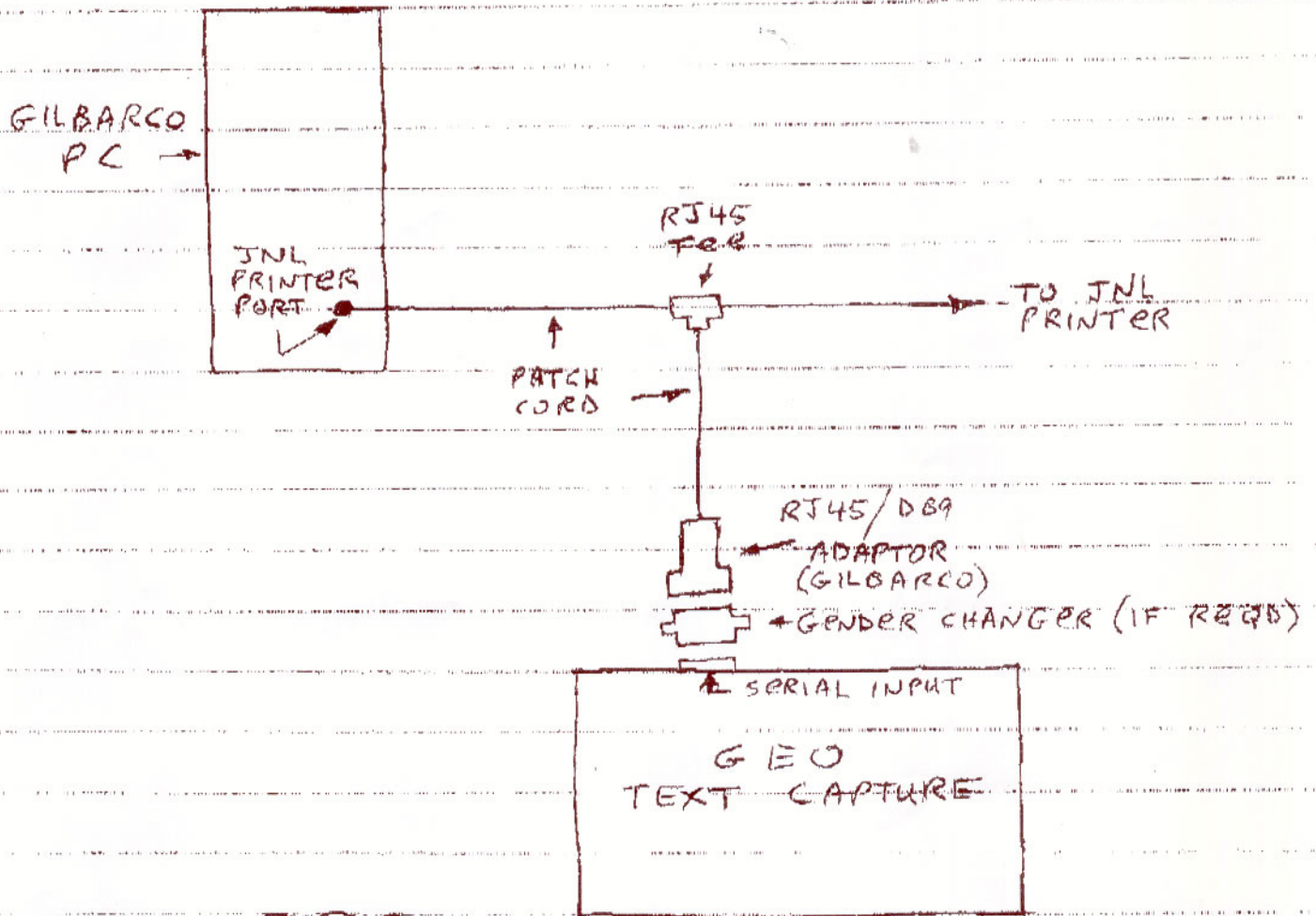


GILBARCO G-SITE POS CONNECTIONS



SETTINGS

V. GILBARCO HARDWARE SETTINGS:

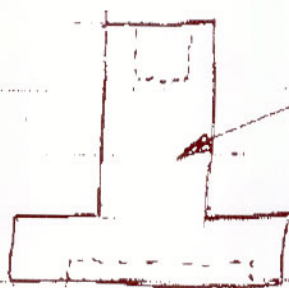
SET JNL PRINTER TYPE TO
"SECURITY", "9600 BAUD"

SET GEO COM PORT SETTINGS TO:

DATA BITS	7
STOP BITS	1
PARITY	EVEN
BAUD	9600
PROTOCOL	NONE

TO
GV SYSTEM
COM PORT

INPUT ADAPTOR FOR GILBARCO G-SITE TEXT CAPTURE HOOK-UP



RJ45 / DB9 ADAPTOR

RJ45 → CONNECTS TO → DB9

PIN - 3



PIN - 2

PIN - 2



PIN - 3

PIN - 4



PIN - 5

CUT ALL OTHER PINS SO THEY DO NOT
TOUCH INSIDE THE ADAPTOR.

22718

210-475-2111

210-475-2111 *Reliable oil*
800-533-3421 CT GO HELP DESK

Using the G-SITE System Journal Printer Port

Using the G-SITE System Journal Printer Port

800-837-5906

10/5/04

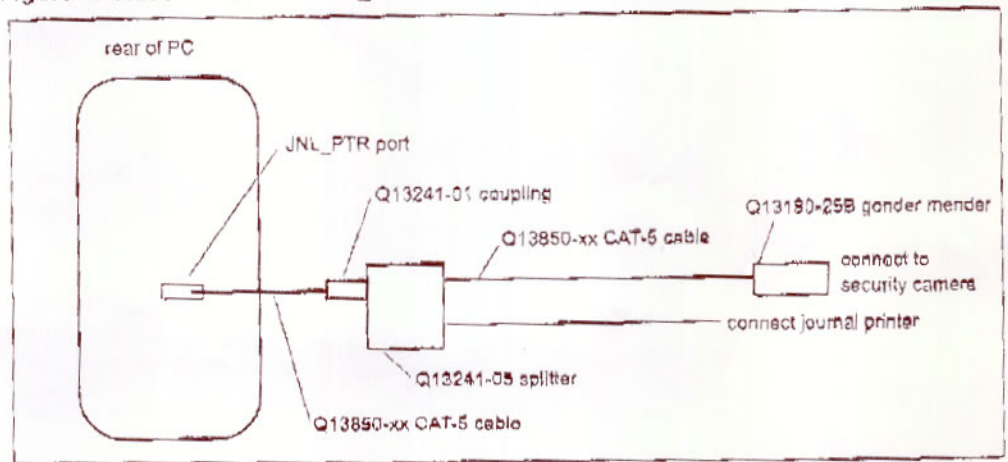
TIM

(CLV OFFICE ON BROADWAY)
TECH IS TOM

Connecting the Security Camera to the JNL_PTR Port

Connect the security camera to the JNL_PTR port according to Figure 1: Video Camera-to-JNL_PTR Port Connections and the following instructions.

Figure 1: Video Camera-to-JNL_PTR Port Connections



- 1 Turn off power to G-SITE system.
- 2 Attach Q13850-xx cable to the G-SITE system JNL_PTR port.
- 3 Connect the other end of Q13850-xx cable to Q13241-05 splitter using the Q13241-01 coupling.
- 4 Connect the journal printer to Q13241-05 splitter.
- 5 Connect the security camera to Q13241-05 splitter using Q13850-xx cable and Q13180-25B gender mender.
- 6 Turn power on to G-SITE system.

Setting Up the G-SITE System Software

- 1 Press the Hot key. Console Application Hot Key Menu displays.
- 2 Select Configuration Menu. PC Console Configuration Password Entry Screen displays.
- 3 Using alphanumeric keypad with ALPHA key light emitting diode (LED) on, enter Configuration Password. **1 2 3 4 5**
- 4 Press CASH key.

Using the G-SITE System Journal Printer Port

- 5 Select View Device Selection. PC Console Configuration Device Selection screen displays.
- 6 Using # and SUSPEND keys, change Journal Printer TYPE to SECURITY and BAUD RATE to 9600.
- 7 SUBTOTAL out of PC Console Configuration.
- 8 Press Hot key.
- 9 Warmstart PC. **IMPORTANT!!!**

~~Security Camera Settings~~ GEO COM PORT SETTINGS

Use the following information to set up the security camera connected to the JNL_PTR port:

Parameter	Setting	Notes
Async Flags	Direct Connect - AND - Full Duplex	Journal
DataBIts	7	Security 9600
StopBIts	1	
Parity	Even	
Baud Rate	1200 - OR - 4800 - OR - 9600 - OR - 19200	The baud rate is programmable on the Advanced Console Device Selection screen.
Protocol Type	None	

G-SITE Console Communications Link Information

Message Level Protocol

The following message is sent to the customer display as follows.

Data Packet

Device ID	Command	Message Text
-----------	---------	--------------

In the body of the message, a data link escape [DLE (10H)] character is used to "escape" the next character if it maps to a valid control character such as start of header (SOH), end of text (ETX), etc.

Capturing Journal Printer Data

Generally, the communications link can be considered to be error free and the security system can merely look for messages beginning with SOH going to the console. After stripping the SOH, ETX, longitudinal redundancy check (LRC), and any DLE characters, a message going to the printer has the following format:

81H	Command Byte	Line Feeds	Data Length	Print Data (0-255 bytes)
-----	--------------	------------	-------------	--------------------------

Address

Other messages can exist with "addresses" other than "81H" and should be ignored by the security system.

Command Byte

Command byte specifies if data is going to either the receipt printer, journal printer, or customer display. The following values should be looked for when capturing data sent to the journal printer:

32H, 33H, 36H, 37H

Line Feeds

One byte containing the number of line feeds to perform after printing.

Data Length

One byte containing length of print data that follows (up to 255 characters). In nearly all circumstances, print data targeted to the journal printer is 40 characters or less.