

GV-Joystick

User's Manual





© 2012 GeoVision, Inc. All rights reserved.

Under the copyright laws, this manual may not be copied, in whole or in part, without the written consent of GeoVision.

Every effort has been made to ensure that the information in this manual is accurate. GeoVision, Inc. makes no expressed or implied warranty of any kind and assumes no responsibility for errors or omissions. No liability is assumed for incidental or consequential damages arising from the use of the information or products contained herein.

GeoVision, Inc.
9F, No. 246, Sec. 1, Neihu Rd.,
Neihu District, Taipei, Taiwan
Tel: +886-2-8797-8377
Fax: +886-2-8797-8335
<http://www.geovision.com.tw>

Trademarks used in this manual: *GeoVision*, the *GeoVision* logo and GV series products are trademarks of GeoVision, Inc. *Windows* and *Windows XP* are registered trademarks of Microsoft Corporation.

December 2012

Contents

Regulatory Notices.....	i
1. Introduction.....	1
1.1 Packing List	1
1.2 System Requirements.....	1
1.3 Important Notice.....	1
2. Overview	2
2.1 Front View.....	2
2.2 Rear View	3
3. Installation	4
3.1 Connecting to GV-System.....	4
3.2 Connecting to GV-Keyboard	4
3.3 USB Driver Installation	4
4. Application.....	6
5. Controlling Multiple PTZ Cameras	8
6. Upgrading Firmware	9
7. Specifications	12

Regulatory Notices



FCC Notice

This equipment has been tested and found to comply with the limits for a Class A digital device, pursuant to part 15 of the FCC Rules. These limits are designed to provide reasonable protection against harmful interference when the equipment is operated in a commercial environment.

Class A

This equipment generates, uses, and can radiate radio frequency energy and, if not installed and used in accordance with the instruction manual, may cause harmful interference to radio communications. Operation of this equipment in a residential area is likely to cause harmful interference in which case the user will be required to correct the interference at their own expense.



CE Notice

This is a Class A product. In a domestic environment, this product may cause radio interference in which case the user may be required to take adequate measures.

RoHS RoHS Compliance

The Restriction of Hazardous Substances (RoHS) Directive is to forbid the use of hazardous materials of production. To meet the RoHS Directive requirements, this product is made to be RoHS compliant.



WEEE Compliance

This product is subject to the Waste Electrical and Electronic Equipment (WEEE) Directive and made compliant with the WEEE requirements.

1. Introduction

The GV-Joystick facilitates the PTZ camera control such as pan, tilt, zoom and focus. It can work on the GV-System independently, and its compatibility with GV-Keyboard empowers the operation of GV-System as well.

1.1 Packing List

- GV-Joystick x 1
- USB Type A to Type B Cable x 1
- RJ-45 Cable x 1
- Software CD x 1

1.2 System Requirements

- 32-bit: Windows XP / Windows Vista / Windows 7 / Windows Server 2008
- 64-bit: Windows 7 / Windows Server 2008
- GV-System V8.2 or later

1.3 Important Notice

- GV-Joystick can only work on the GV-Keyboard of firmware V2.0.0.1 or later.
- When you combine the use of GV-Joystick and GV-Keyboard, the GV-Joystick MUST be connected to the GV-Keyboard. Both GV-Joystick and GV-Keyboard cannot be connected to the GV-System separately.

2. Overview

2.1 Front View

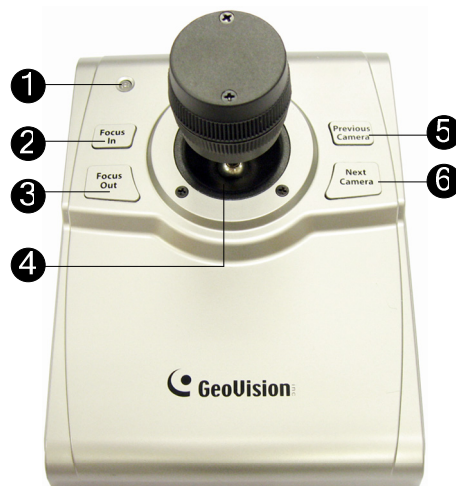


Figure 1

No	Name	Function
1	Power LED	Indicates power activity.
2	Focus In	Adjusts focus near.
3	Focus Out	Adjusts focus far.
4	Handle	Controls PTZ movements (pan and tilt), zooms in and zooms out.
5	Previous Camera	Controls the previous camera.
6	Next Camera	Controls the next camera.

GV-Joystick Handle

No	Handle Movement	Function
1	Right	Pans the PTZ right
2	Left	Pans the PTZ left
3	Up	Tilts the PTZ up
4	Down	Tilts the PTZ down
5	Turn the handle right	Zooms in
6	Turn the handle left	Zooms out

2.2 Rear View



Figure 2

No	Name	Function
1	USB to DVR port	Connects to computer
2	To GV-Keyboard port	Connects to GV-Keyboard

3. Installation

There are two ways to connect GV-Joystick to GV-System by:

1. USB Port, or
2. the connection through GV-Keyboard.

3.1 Connecting to GV-System

The GV-Joystick is an independent device that can work with the GV-System directly. To connect the GV-Joystick to the GV-System, use the supplied USB cable.

3.2 Connecting to GV-Keyboard

To work on the GV-System together with the GV-Keyboard, the GV-Joystick **MUST** be connected to the GV-Keyboard. To connect the GV-Joystick to the GV-Keyboard, use the supplied RS-45 cable.

3.3 USB Driver Installation

No matter which way you use to connect the GV-Joystick to the GV-System, it is required to install the USB driver before use.

After hardware installation, the Found New Hardware Wizard will automatically detect the device. Ignore the Wizard and follow these steps to install the driver:

1. Insert the Software CD. It will run automatically and a window pops up.



Figure 3

2. Select **Install Geovision USB Devices Driver**. This dialog box appears.

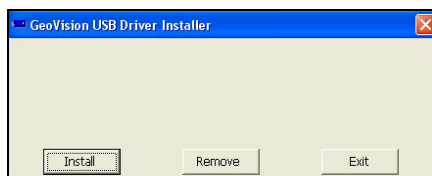


Figure 4

3. Click **Install** to install the driver. When the installation is complete, this message will appear: *Install done!*
4. Click **Exit** to close the dialog box.
5. To verify that the driver is installed correctly, go to Windows Device Manager. In the Ports (COM & LPT) field, you should see the entry for Prolific USB-to-Serial Bridge.

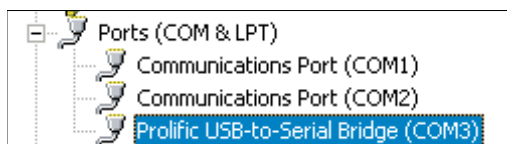


Figure 5

Note: Remember the COM port showing in the Prolific USB-to Serial Bridge entry. It indicates the port number that the GV-Joystick is using.

4. Application

When using the GV-Joystick to control the PTZ cameras, you need to run the following program in the background. Note that up to 4 GV-Joysticks can be connected, but only one GV-Joystick can control one PTZ camera at one time.

1. Run **mcamctrl.exe** from the GV-System folder.

For the users of Center V2 or Control Center, run this program from the Center V2 or Control Center folders.

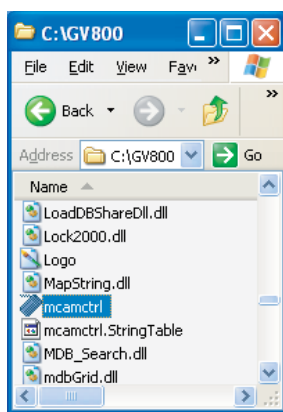


Figure 6

2. The Keyboard & Joystick controller dialog box appears.



Figure 7

3. Leave both DVR ID and DVR Name fields blank.
4. In the Startup Type field, select **Manual** or **Automatic** to run Keyboard & Joystick controller at next startup.
5. To adjust the speed of GV-Joystick, use the slide bar of PTZ Speed.

6. In the Port field, select the port connecting to the GV-Joystick. Find out the port number the GV-Joystick is using in the Prolific USB to Serial Bridge entry. See 3.2 *USB Driver Installation*.
7. Click the **Start Service** button ► to start the service. If you want to stop the service, click the **Stop Service** button ■.

Note:

1. If you connect the GV-Joystick to the GV-Keyboard, assign the port given to the connected GV-Keyboard when running the Keyboard & Joystick controller. Up to 4 sets of GV-Joystick connecting to GV-Keyboard can be used.
 2. The buttons **F1** to **F8** and **Print** on the Keyboard & Joystick controller toolbar are only available when the GV-Keyboard is in use.
 3. To add a PTZ camera to the GV-System, click the **Configure** button, point to **General Setting** and select **System Configure**. Then check **PTZ Device Setup** to enable the settings. For details, see “PTZ Control Panel” on *Surveillance System Software DVD*.
-

5. Controlling Multiple PTZ Cameras

The GV-Joystick allows you to control more than one PTZ camera at a time. For this, you need to assign the PTZ cameras to their corresponding camera channels on the GV-System first.

1. Click the **Configure** button, point to **Accessories** and select **Camera Mapping PTZ**. This dialog box appears.

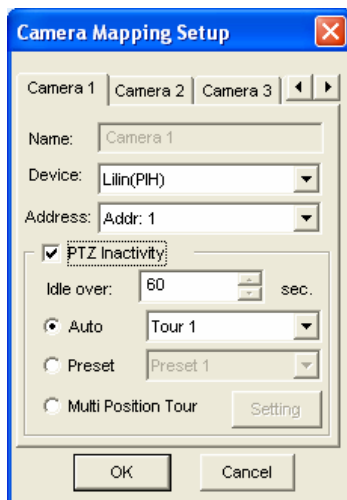


Figure 8

2. Use the camera tabs to select a camera channel.
3. To map a PTZ camera to the selected camera channel, use the **Device** drop-down list.
4. If you have two identical PTZ cameras set in the system, you may use the **Address** drop-down list to choose the correct address.
5. Click **OK** to apply the settings.
6. To control multiple PTZ cameras using the GV-Joystick, click the **Previous Camera** and **Next Camera** buttons on the joystick.

For details on mapping the PTZ cameras, see “Mapping PTZ Cameras” on *Surveillance System Software DVD*.

6. Upgrading Firmware

Follow the steps below to upgrade the firmware to your GV-Joystick.

Note: The following firmware upgrade is applied to GV-Joystick with barcode numbers starting from 000012153701. You can find the barcode on the rear panel.



1. Unplug the GV-Joystick's USB cable, press and hold the **Focus In** and **Focus Out** button, and re-plug the USB cable. Release the buttons when the Power LED turns red.



Figure 9

2. Insert the Software CD. It runs automatically, and a window appears.

3. Select **Run Firmware Update Utility**. This box appears.



Figure 10

4. Use the drop-down menu to select the **COM PORT** where the GV-Joystick is installed. To look up the **COM Port**, right-click the **My Computer** icon on your desktop and select **Manage**. This window appears. Select **Device Manager** from the left menu to look up the port information.

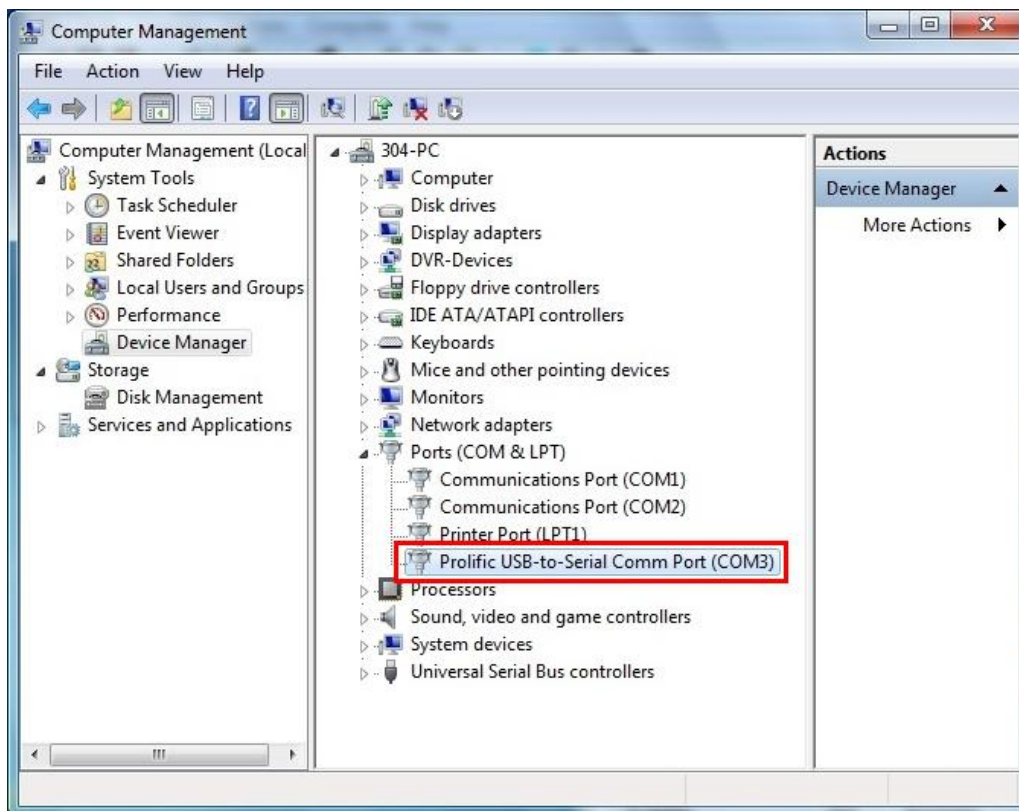


Figure 11

5. Click **Browse** to add the firmware file from the downloaded folder.

- Click **Update**. When the upgrade is completed, the Power LED turns green and you will be prompted by a message.

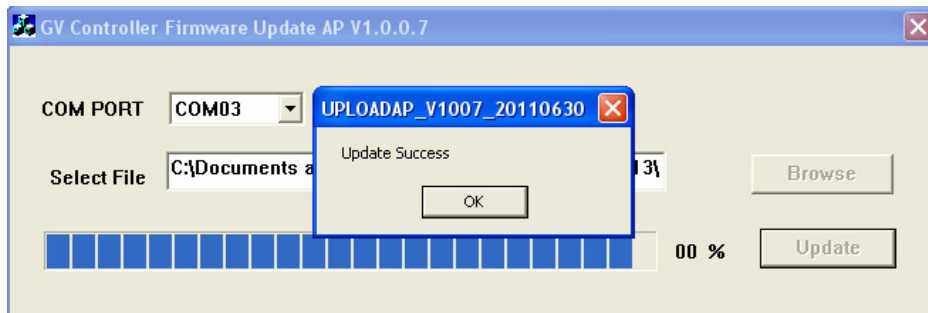


Figure 12

- Calibrate the GV-Joystick by pressing and holding the 4 buttons on the GV-Joystick for 3 seconds. The Power LED blinks red during the process. The Power LED turns green to indicate that the settings are calibrated.

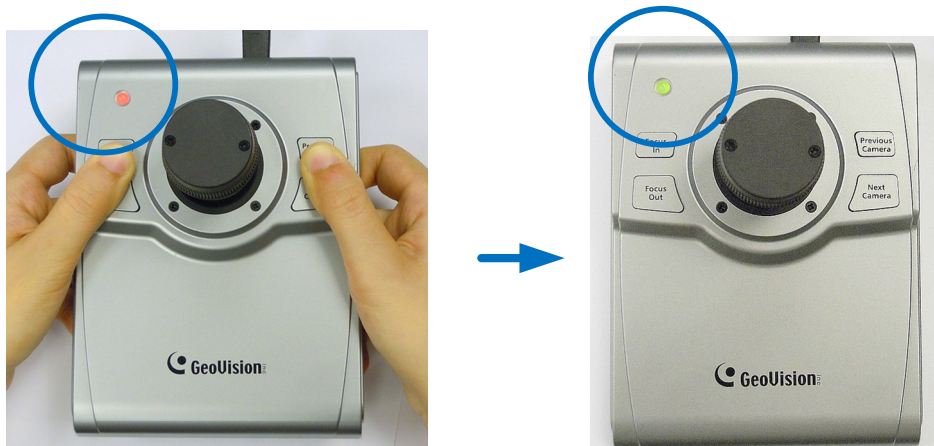


Figure 13

7. Specifications

OS Supported	32-bit	Windows XP / Windows Vista / Windows 7 / Windows Server 2008
	64-bit	Windows 7 / Windows Server 2008
Communication	USB 2.0	Connects to PC
	RJ-45	Connects to GV-Keyboard
Power	DC IN	DC 5V 50mA
Environmental Conditions	Operating Temperature	0~50°C
	Humidity	5%~95% (non-condensing)
Dimensions (W X H X D)		160 x 90 x 118 mm / 6.3 x 3.54 x 4.65 in

All specifications are subject to change without notice.