

# GV-IR LED

---

## *User's Manual*



Before attempting to connect or operate this product, please read these instructions carefully and save this manual for future use.



© 2010 GeoVision, Inc. All rights reserved.

Under the copyright laws, this manual may not be copied, in whole or in part, without the written consent of GeoVision.

Every effort has been made to ensure that the information in this manual is accurate. GeoVision is not responsible for printing or clerical errors.

GeoVision, Inc.  
9F, No. 246, Sec. 1, Neihu Rd.,  
Neihu District, Taipei, Taiwan  
Tel: +886-2-8797-8377  
Fax: +886-2-8797-8335  
<http://www.geovision.com.tw>

Trademarks used in this manual: *GeoVision*, the *GeoVision* logo and *GV* series products are trademarks of GeoVision, Inc. *Windows* and *Windows XP* are registered trademarks of Microsoft Corporation.

March 2010

# Contents

<b>Preface</b> .....	1
<b>1. Introduction</b> .....	<b>2</b>
1.1 Features.....	2
1.2 Packing List.....	3
<b>2. Connecting GV-IR LED to GV-IPCAM</b> .....	<b>4</b>
<b>3. Installing GV-IR LED</b> .....	<b>6</b>
<b>4. Specifications</b> .....	<b>7</b>

## Preface

Welcome to the **GV-IR LED** User's Manual.

The **GV-IR LED** is an indoor-use infrared illuminator, which is designed to work with the **GV-IPCAM** for a better night vision. The **GV-IR LED** can only be compatible with the **GV-IPCAM** supporting wet-contact input devices. The tables below list the compatible and incompatible models of **GV-IPCAM**.

### Compatible GV-IPCAM models (with wet-contact support)

Model No.	Description
<b>GV-BX110D</b>	GV-IPCAM, 1.3 M, H.264, D/N
<b>GV-BX010D</b>	GV-IPCAM, VGA, H.264, D/N

### Incompatible GV-IPCAM models (with dry-contact support)

Model No.	Description
<b>81-13MBC-C01</b>	GV-IPCAM, 1.3M, Box
<b>81-13MBC-D01</b>	GV-IPCAM, 1.3M, Box
<b>81-13MVC-C01</b>	GV-IPCAM, 1.3M, Varifocal
<b>81-13MVC-D01</b>	GV-IPCAM, 1.3M, Varifocal
<b>81-13MVD-C01</b>	GV-IPCAM, 1.3M, Vandal Proof Dome
<b>81-13MVD-D01</b>	GV-IPCAM, 1.3M, Vandal Proof Dome

## 1. Introduction

The **GV-IR LED** is designed to automatically detect the illumination of the environment and determine it to be day mode or night mode. It is also designed to work perfectly with the **GV-IPCAM** to improve the image performance in low-light or night situations.

Featured with the D/N auto detection function, the **GV-IR LED** is able to control the **IR Cut Filter** built in the **GV-IPCAM** through input trigger signals. In night mode of 10 lux or lesser illuminance, the infrared light of **GV-IR LED** will turn on and the camera images will be switched to monochrome to produce better images. In day mode of 20 lux or higher illuminance, the infrared light of **GV-IR LED** will turn off and the camera images will be switched to color. Following is the comparison of the **GV-IPCAM** working with and without the **GV-IR LED** in 10 lux illuminance.



*With GV-IR LED*



*Without GV-IR LED*

### 1.1 Features

- Indoor infrared illumination
- 850 nm LEDs
- 12 IR LEDs for 10-meter illumination distance
- D/N mode auto detection
- 12V DC power supplied from GV-IPCAM. No separate power adapter is required.

## 1.2 Packing List

The GV-IR LED package includes the following items:

- GV-IR LED x 1 (with a power cable and unshielded wires)



- Bracket x 1



- Hexagon Head Phillips Screw x 1



- Round Head Phillips Screw x 2



## 2. Connecting GV-IR LED to GV-IPCAM

To connect the GV-IR LED to a GV-IPCAM, follow the steps below:

1. Fasten the bracket to the GV-IPCAM with the hexagon head phillips screw.



*Figure 1*

2. Fasten the GV-IR LED to the bracket with the round head phillips screws.



*Figure 2*

## 2 Connecting GV-IR LED to GV-IPCAM

3. Connect the red unshielded wire to pin 1 (input +) and the black unshielded wire to pin 2 (input -) on the I/O terminal block of the GV-IPCAM.



Figure 3

4. Connect one end of the power cable to the 12V power port on the GV-IPCAM and the other end to the power adapter of the GV-IPCAM.

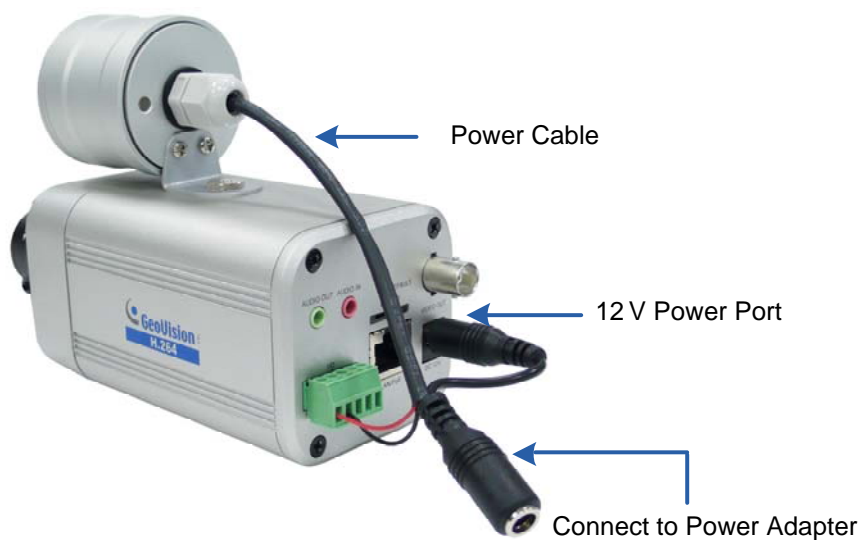


Figure 4



### 3. Installing GV-IR LED

After connecting the GV-IR LED to the GV-IPCAM, you need to access the Web interface of the GV-IPCAM to install the GV-IR LED. Follow the steps below:

1. Access the Web interface of the GV-IPCAM.

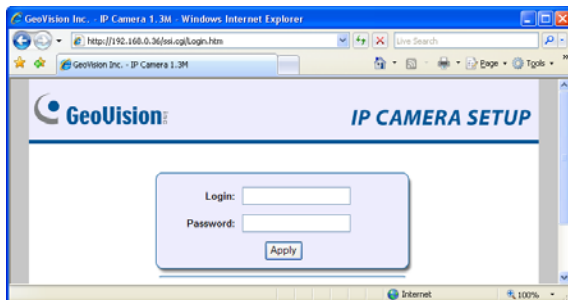


Figure 5

2. Select **Video and Motion**, select **Video Settings**, select **Streaming 1** and set **IR Check Function** to be **Trigger by Input**.

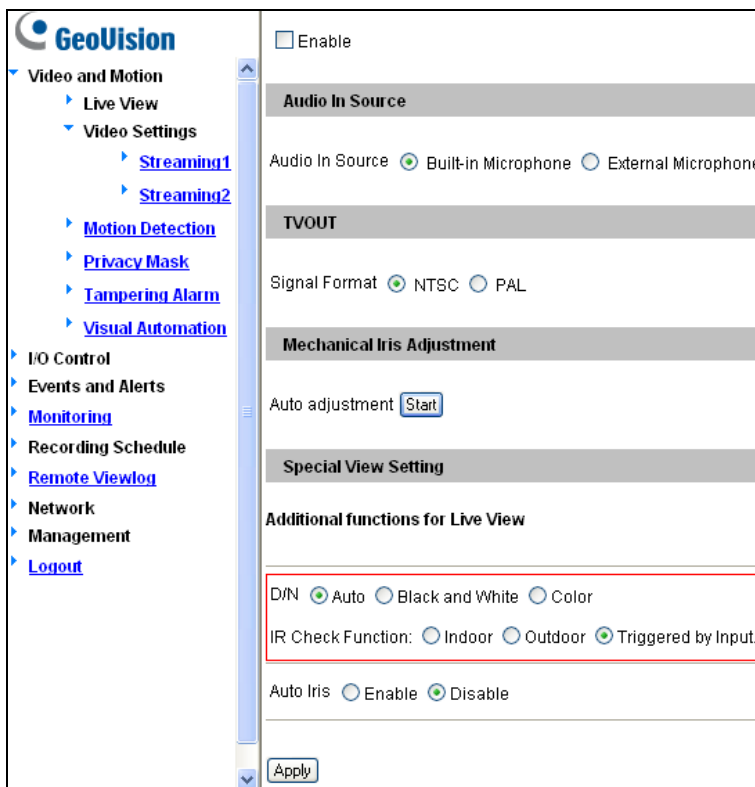


Figure 6

3. Click **Apply**.

## 4. Specifications

<b>Power</b>	12V DC, 250 mA
<b>IR Wavelength</b>	850 nm
<b>Environment</b>	Indoor use only
<b>Illumination View Angle</b>	35°
<b>Illumination Range</b>	10 m / 32.81 ft
<b>Illumination Life</b>	10,000 hrs
<b>On-Off Conditions</b>	10 lux (On), 20 lux (Off)
<b>Trigger Type</b>	Wet Contact, 0 ~ 5.1V
<b>Operating Temperature</b>	0°C ~ 50°C
<b>Weight</b>	140 g / 0.31 lbs
<b>Dimensions (H x W x D)</b>	49 x 47 x 67 (mm) / 1.93 x 1.85 x 2.64 (in)