

# Quick Start Guide

## *GV-3D People Counter*

**V1.02**





© 2013 GeoVision, Inc. All rights reserved.

Under the copyright laws, this manual may not be copied, in whole or in part, without the written consent of GeoVision.

Every effort has been made to ensure that the information in this manual is accurate. GeoVision, Inc. makes no expressed or implied warranty of any kind and assumes no responsibility for errors or omissions. No liability is assumed for incidental or consequential damages arising from the use of the information or products contained herein. Features and specifications are subject to change without notice.

GeoVision, Inc.  
9F, No. 246, Sec. 1, Neihu Rd.,  
Neihu District, Taipei, Taiwan  
Tel: +886-2-8797-8377  
Fax: +886-2-8797-8335  
<http://www.geovision.com.tw>

Trademarks used in this manual: *GeoVision*, the *GeoVision* logo and *GV* series products are trademarks of GeoVision, Inc. *Windows* and *Windows XP* are registered trademarks of Microsoft Corporation.

October 2013

# Contents

<b>1. Introduction.....</b>	<b>2</b>
1.1 Packing List.....	2
1.2 Options.....	2
<b>2. Overview.....</b>	<b>3</b>
2.1 Front View .....	3
2.2 Rear View.....	4
2.3 The IR Remote Control.....	5
<b>3. Connection.....</b>	<b>6</b>
<b>4. Basic Configurations on OSD.....</b>	<b>8</b>
4.1 Setting Up the Network.....	9
4.2 Setting the ID, Password and Display Options.....	10
<b>5. Accessing the Web Interface .....</b>	<b>11</b>
5.1 Setting the GV-3D People Counter.....	12
5.2 Accessing Counting Results .....	14
<b>6. Content Designer.....</b>	<b>15</b>
6.1 Creating a Screen Layout.....	15
6.2 Exporting the Screen Layout to GV-3D People Counter .....	17
<b>7. Upgrading the Firmware.....</b>	<b>18</b>

# 1. Introduction

Welcome to the *GV-3D People Counter Quick Start Guide*. In the following sections, you will learn about the basic installations and configurations of the GV-3D People Counter. For the detailed user's manual, see *GV-3D People Counter User's Manual*.

## 1.1 Packing List

1. GV-3D People Counter × 1
2. IR remote control × 1
3. AC / DC adapter × 1 (12 V / 3 A, 36 W)
4. Power cord x 1
5. Software CD x 1
6. SD Card x 1

## 1.2 Options

Optional devices can expand your GV-3D People Counter's capabilities and versatility. Contact your dealer for more information.

Options	Description
<b>Wall Mount Kit</b>	The Wall Mount Kit is used to mount the GV-3D People Counter to the wall.
<b>VESA Monitor Mount Kit</b>	The VESA Monitor Mount Kit is used to mount the GV-3D People Counter to the back of a VESA monitor.
<b>Asus Xtion Pro Live</b>	The Asus Xtion Pro Live is a motion sensor used to detect the number of people who have walked through the detection area. The operating temperature is from 0°C ~ 40°C / 40°F ~ 104°F.
<b>Asus Xtion Pro / Asus Xtion Pro Live In-Ceiling Mount</b>	The In-Ceiling Mount is used to mount Asus Xtion Pro / Asus Xtion Pro Live on the ceiling.
<b>USB Extension Cable</b>	The 1.8 meters (6 feet) USB extension cable can extend the distance between the Asus Xtion Pro / Asus Xtion Pro Live and the GV-3D People Counter.

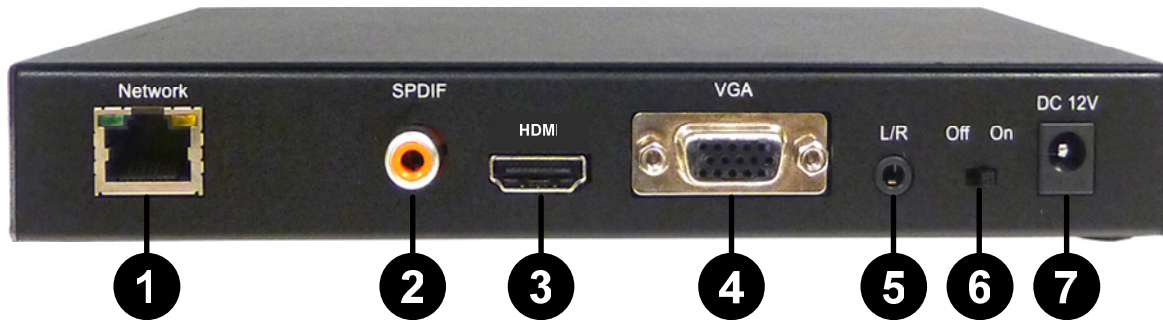
## 2. Overview

### 2.1 Front View



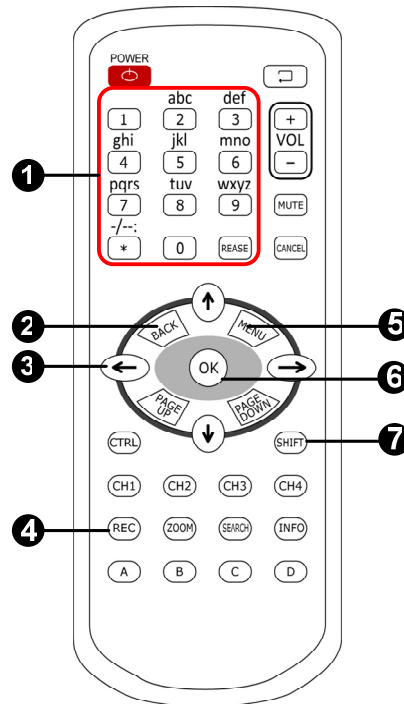
No.	Name	Function
1	LED Indicators	The <b>green</b> LED indicates the Asus Xtion Pro / Asus Xtion Pro Live is connected. The <b>red</b> LED indicates the power is supplied.
2	USB	Connect to an Asus Xtion Pro / Asus Xtion Pro Live.
3	IR	Built-in IR receiver to receive the IR signals from the IR remote control.
4	Default	Reset the GV-3D People Counter to the default factory settings.
5	SD Card Slot	Connect to a SD card for local storage and firmware upgrade.

## 2.2 Rear View



No.	Name	Function
1	Ethernet	Connect to an Ethernet.
2	SPDIF	Reserved (not functional).
3	HDMI	Connect to an HDMI supported display device.
4	VGA	Connect to a VGA monitor.
5	L/R	Connect to a speaker.
6	Power OFF/ON	Switch the power on or off.
7	DC 12V	Connect to power by using the supplied power adapter.

## 2.3 The IR Remote Control



No.	Name	Function								
1	Reboot	Reboot the device.								
2	Numbers / Alphabets / Punctuation Marks	Enter the numbers, alphabets or punctuation marks.								
3	Back	Exit the Setup Menu and return to the counting page.								
4	Direction Arrows	Move up, down, right and left in the Setup Menu.								
5	Rec	Save the settings in the Setup Menu.								
6	Menu	Switch to the setup menu.								
7	OK	Enter the setup options in the Setup Menu.								
8	Shift	<p>Press <b>Shift</b> and <b>0~7</b> to switch to one of the 8 resolutions below.</p> <table border="0"> <tr> <td>Shift + 0 : VGA_640 x 480</td> <td>Shift + 4 : HDMI_480p</td> </tr> <tr> <td>Shift + 1 : VGA_1024 x 768</td> <td>Shift + 5 : HDMI_720p</td> </tr> <tr> <td>Shift + 2 : VGA_1280 x 768</td> <td>Shift + 6 : HDMI_1080i</td> </tr> <tr> <td>Shift + 3 : VGA_1366 x 768</td> <td>Shift + 7 : HDMI_1080p</td> </tr> </table> <p>Note the resolution switch will cause the GV-3D People Counter to automatically reboot.</p>	Shift + 0 : VGA_640 x 480	Shift + 4 : HDMI_480p	Shift + 1 : VGA_1024 x 768	Shift + 5 : HDMI_720p	Shift + 2 : VGA_1280 x 768	Shift + 6 : HDMI_1080i	Shift + 3 : VGA_1366 x 768	Shift + 7 : HDMI_1080p
Shift + 0 : VGA_640 x 480	Shift + 4 : HDMI_480p									
Shift + 1 : VGA_1024 x 768	Shift + 5 : HDMI_720p									
Shift + 2 : VGA_1280 x 768	Shift + 6 : HDMI_1080i									
Shift + 3 : VGA_1366 x 768	Shift + 7 : HDMI_1080p									

## 3. Connection

Before connecting the GV-3D People Counter, read the following notes:

- GV-3D People Counter is compatible with the following firmware versions:
  - GV-3D People Counter V1.01: Asus Xtion Pro / Asus Xtion Pro Live V5.3.26 / V5.7.9
  - GV-3D People Counter V1.02: Asus Xtion Pro / Asus Xtion Pro Live V5.7.9 / V5.8.22
- For better results, avoid exposing the Asus Xtion Pro / Asus Xtion Pro Live to direct sunlight or IR LED.
- You can only connect GV-3D People Counter to one display device through HDMI or VGA connector. The video signal will be unstable if multiple display devices are connected.





1. Connect a display device to VGA video connector or HDMI connector for video and audio alarm combined outputs.
2. Connect to a standard network cable.
3. If you use a VGA monitor, connect a speaker to L/R port for audio alarm.
4. Insert an SD card.
5. Connect the Asus Xtion Pro / Asus Xtion Pro Live to the USB port of the GV-3D People Counter. The recommended installation height for Asus Xtion Pro / Asus Xtion Pro Live is between 1.8 – 5 meters.
6. Connect to power using the supplied power adapter.
7. Switch the Power button to ON.

## 4. Basic Configurations on OSD

After connecting the necessary devices and turning on the power, the window below appears. The GV-3D People Counter starts counting people passing under Asus Xtion Pro / Asus Xtion Pro Live.



To access the OSD (On-Screen Display) menu, press **Menu** on the remote control.

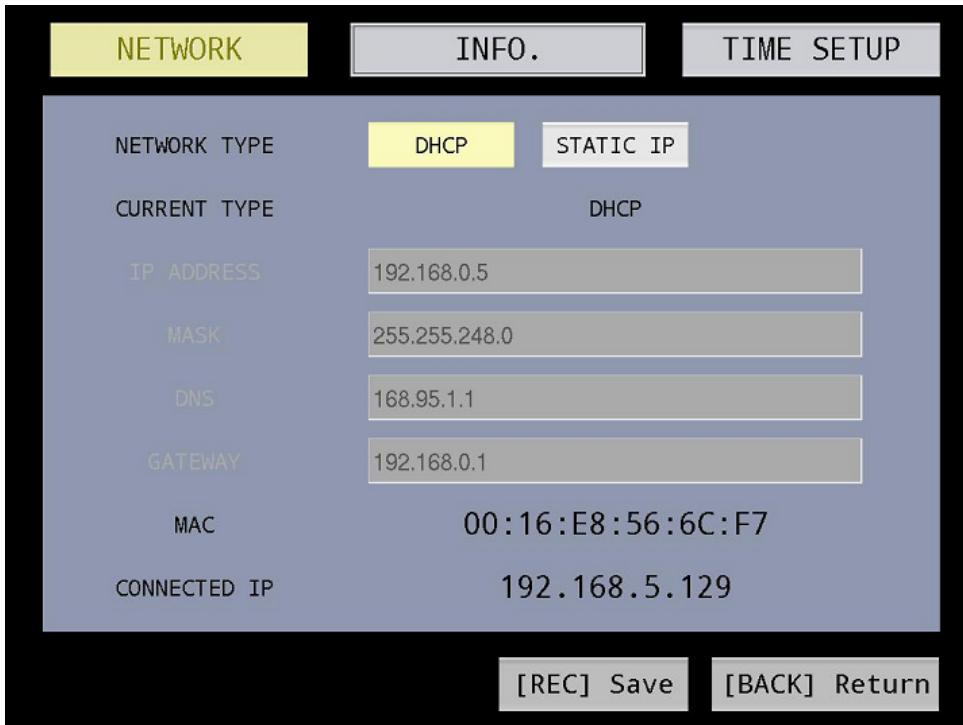
---

**Note:** By default, the video output is set to VGA with 1024 x 768 resolutions. If you have connected an HDMI display device, use the IR remote control to press **Shift + 0~7** to switch to the corresponding resolution.

---

## 4.1 Setting Up the Network

In the OSD menu, select the **Network** tab to configure the IP address of the GV-3D People Counter. If installed in a LAN with the DHCP server, the GV-3D People Counter will use a dynamic IP address by default. If installed in a LAN without the DHCP server, the default IP address **192.168.0.100** will be applied.

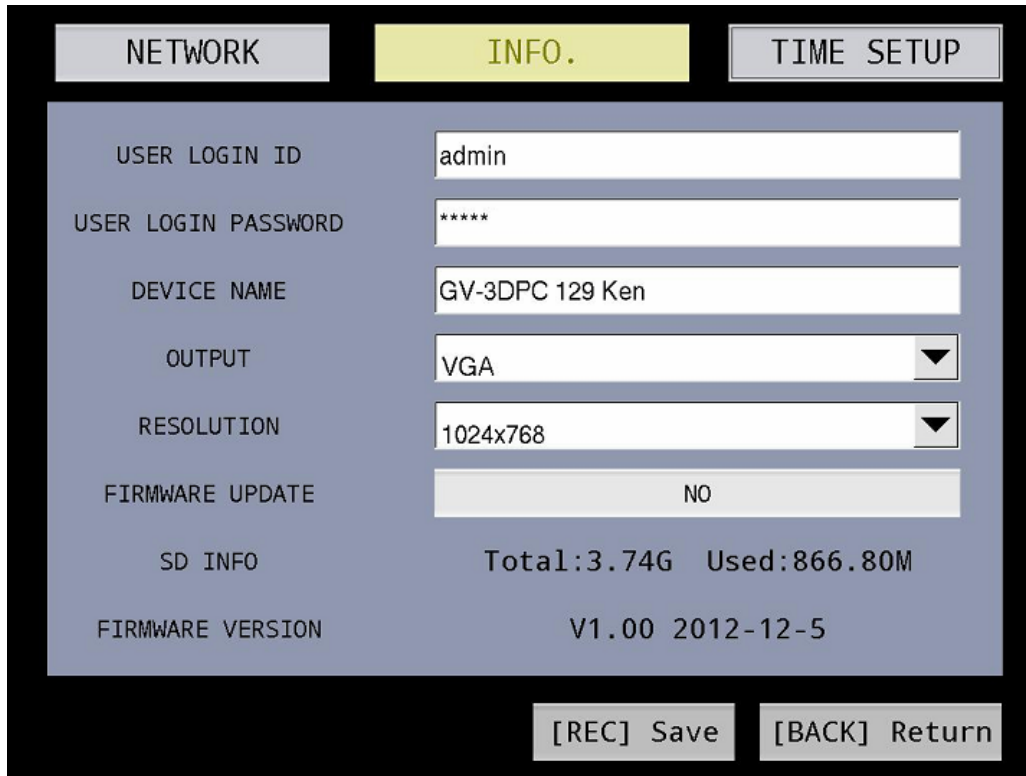


NETWORK		INFO.	TIME SETUP
NETWORK TYPE	<b>DHCP</b>	STATIC IP	
CURRENT TYPE	DHCP		
IP ADDRESS	192.168.0.5		
MASK	255.255.248.0		
DNS	168.95.1.1		
GATEWAY	192.168.0.1		
MAC	00:16:E8:56:6C:F7		
CONNECTED IP	192.168.5.129		
		[REC] Save	[BACK] Return

1. To assign a static IP address for the GV-3D People Counter, select **Static IP** and enter a fixed IP address, subnet mask, DNS and gateway.
2. To use a dynamic IP assigned by the DHCP Server, select **DHCP**. Once connected, the current IP address will be displayed next to **Connected IP**.
3. Press **[REC]** to save the settings. The GV-3D People Counter will reboot to apply the settings.

## 4.2 Setting the ID, Password and Display Options

1. Select the **Info** tab.



NETWORK	INFO.	TIME SETUP
USER LOGIN ID	admin	
USER LOGIN PASSWORD	*****	
DEVICE NAME	GV-3DPC 129 Ken	
OUTPUT	VGA	
RESOLUTION	1024x768	
FIRMWARE UPDATE	NO	
SD INFO	Total:3.74G Used:866.80M	
FIRMWARE VERSION	V1.00 2012-12-5	
[REC] Save		[BACK] Return

2. Set the **User Login ID** and **User Login Password** to access the GV-3D People Counter.
3. In the **Output** field, select **VGA** or **HDMI** according to the video output of the display monitor.
4. In the **Resolution** field, select one of the screen resolutions below.

HDMI at 60 Hz	480p	720p	1080i	1080p
VGA at 60 Hz	640 x 480	1024 x 768	1280 x 768	1366 x 768

## 5. Accessing the Web Interface

After installing the GV-3D People Counter on the network, you can access GV-Web Report Lite to set up the Asus Xtion Pro / Asus Xtion Pro Live and look up counting data. The GV-Web Report Lite is a Web server built in the GV-3D People Counter.

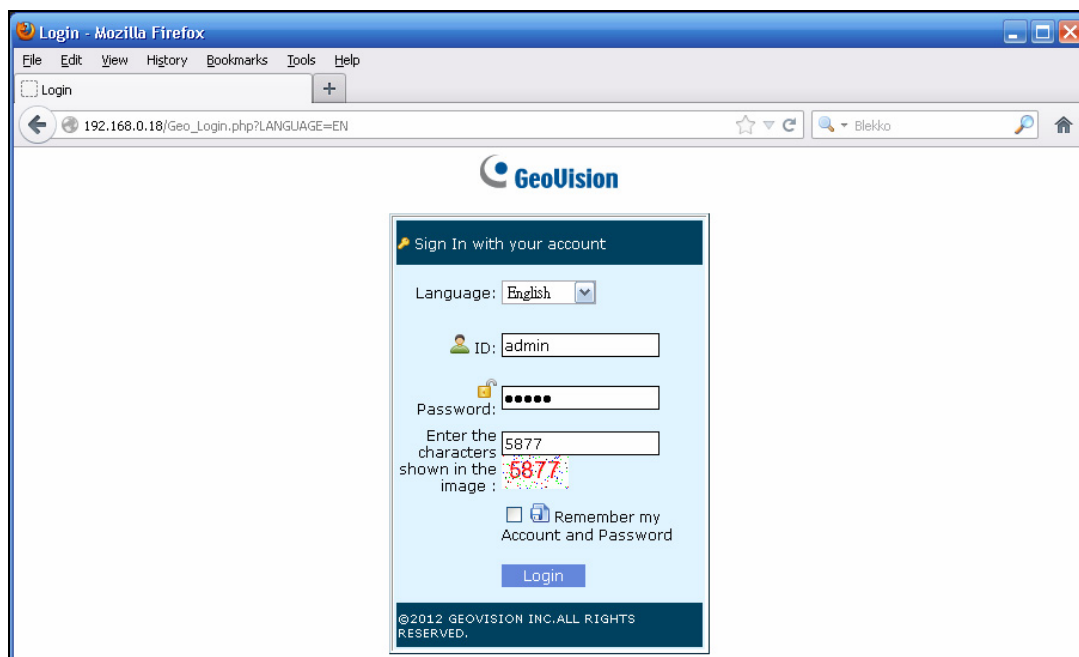
### System Requirements

To access GV-3D People Counter through Web browser, ensure your PC is in good network connection, and use one of the following web browsers:

- Mozilla Firefox V16.0.2 or later
- Google Chrome V.22.0.1.1229.94 or later

### Logging In

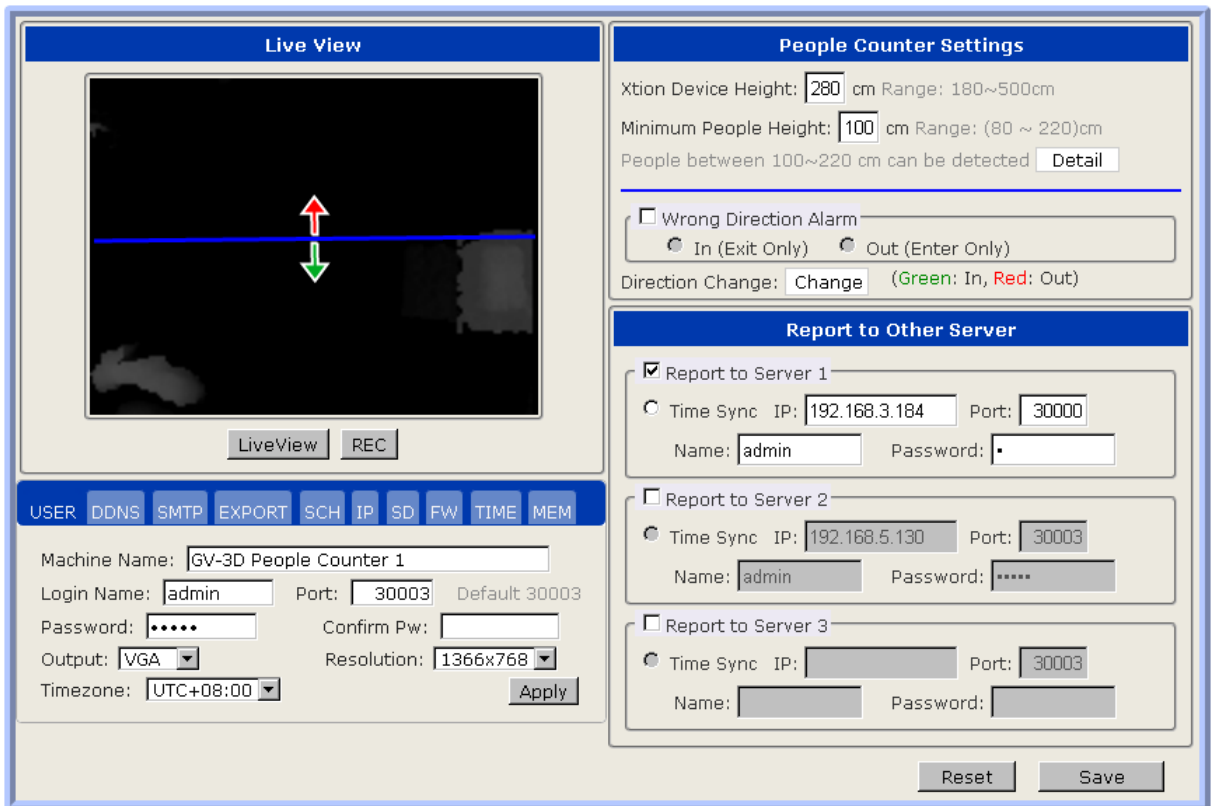
1. In your Web browser, type the IP address or the domain name of the GV-3D People Counter in the **Location / Address** field.



2. Type the ID and password. The default ID and password are **admin**.
3. Type the characters shown in the image and click **Login**.

## 5.1 Setting the GV-3D People Counter

1. To set the GV-3D People Counter, click the **Setup** tab on the top.



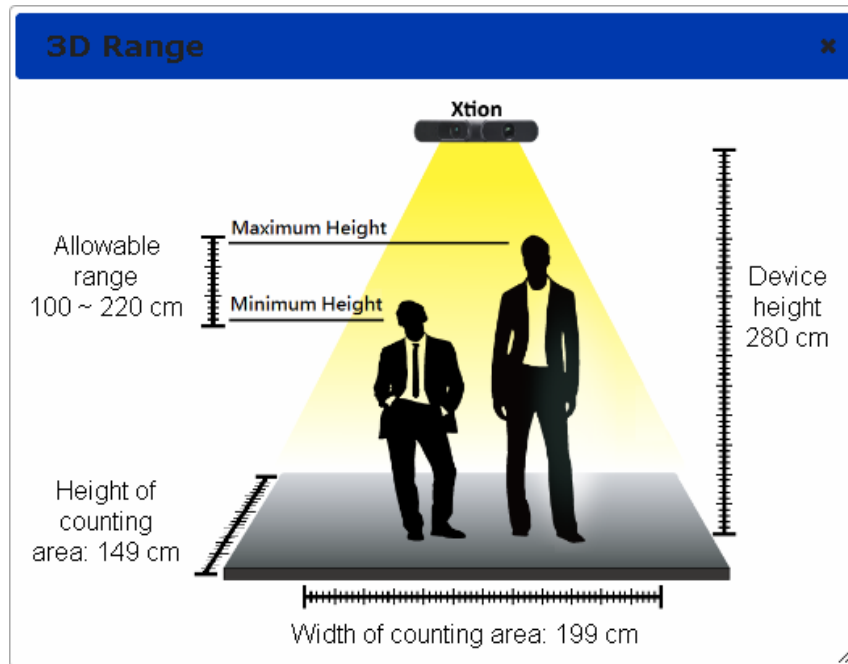
The screenshot shows the configuration interface for the GV-3D People Counter. It includes a 'Live View' window with a camera feed and a blue detection line. Below the live view are 'LiveView' and 'REC' buttons. A navigation bar at the top contains tabs: USER, DDNS, SMTP, EXPORT, SCH, IP, SD, FW, TIME, MEM. The main configuration area is divided into several sections:

- People Counter Settings:**
  - Xtion Device Height: 280 cm Range: 180~500cm
  - Minimum People Height: 100 cm Range: (80 ~ 220)cm
  - People between 100~220 cm can be detected [Detail](#)
  - Wrong Direction Alarm
    - In (Exit Only)  Out (Enter Only)
  - Direction Change: [Change](#) (Green: In, Red: Out)
- Report to Other Server:**
  - Report to Server 1
    - Time Sync IP: 192.168.3.184 Port: 30000
    - Name: admin Password: •
  - Report to Server 2
    - Time Sync IP: 192.168.5.130 Port: 30003
    - Name: admin Password: \*\*\*\*\*
  - Report to Server 3
    - Time Sync IP: Port: 30003
    - Name: Password:
- Bottom Configuration:**
  - Machine Name: GV-3D People Counter 1
  - Login Name: admin Port: 30003 Default 30003
  - Password: \*\*\*\*\* Confirm Pw:
  - Output: VGA Resolution: 1366x768
  - Timezone: UTC+08:00 [Apply](#)

At the bottom right, there are [Reset](#) and [Save](#) buttons.

2. Draw a line on the live view to mark the boundary of the detection zone. To change the direction of the In / Out arrows, click the **Change** button after Direction Change on the right.

- For more precise counting results, specify the height of the Asus Xtion Pro / Asus Xtion Pro Live in the **Xtion Device Height** field and the minimum people height in the **Minimum People Height** field. Click the **Detail** button to see an illustration of the detectable height range and the dimensions of the detection area based on the height you specified.



- To send People Counting data to other GV-Web Report Lite Server and / or GV-Web Report, select **Report to Server** and type the **IP** address, port, name and password of the GV-Web Report Lite or GV-Web Report.

For details, see *Chapter 4 The Web Interface* in the *GV-3D People Counter User's Manual*.

---

**Note:** GV-3D People Counter is only compatible with GV-Web Report V2.2.3.0 or later.

---

## 5.2 Accessing Counting Results

After setting up the GV-3D People Counter to start collecting data, you can access the people counts, tables and charts. Use one of the tabs below in GV-Web Report Lite to look up the data.

- **Device:** Displays the counted data and graphs from all connected GV-3D People Counter. The data is updated every minute.
- **Group:** You can group the connected GV-3D People Counter and see the data of the set group.
- **Log:** Allows you to look up the data of a specified time period from the selected GV-3D People Counter.
- **Query:** Provides the daily, weekly, monthly and yearly people counting graphs and tables.

For details, see *Chapter 4 The Web Interface* in the *GV-3D People Counter User's Manual*.



## 6. Content Designer

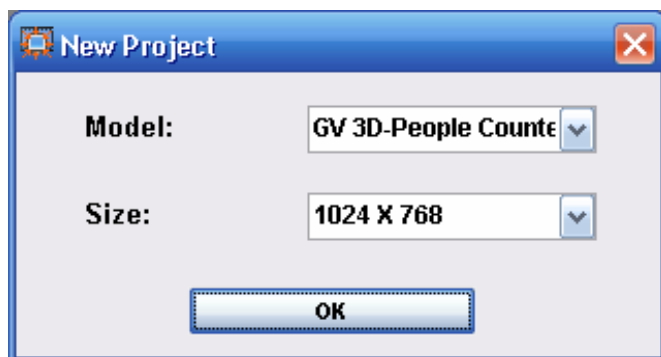
Using the Content Designer, you can customize the screen layout for display monitor to show the in counts, out counts, stay counts and the current time.

Follow the steps below to install the Content Designer:

1. Insert the Software CD to your computer. It runs automatically and a window pops up.
2. Select **Install DirectX 9.0c** and follow the on-screen instructions.
3. Select **Install Microsoft .NET Framework 3.5** and follow the on-screen instructions.
4. Select **GeoVision Content Designer** and follow the on-screen instructions.

### 6.1 Creating a Screen Layout

1. To create a project, click **File** on the menu bar and select **New Scenario**.
2. Select **GV-3D People Counter** and a screen resolution. The screen resolution must match the resolution you set for the display monitor.





---

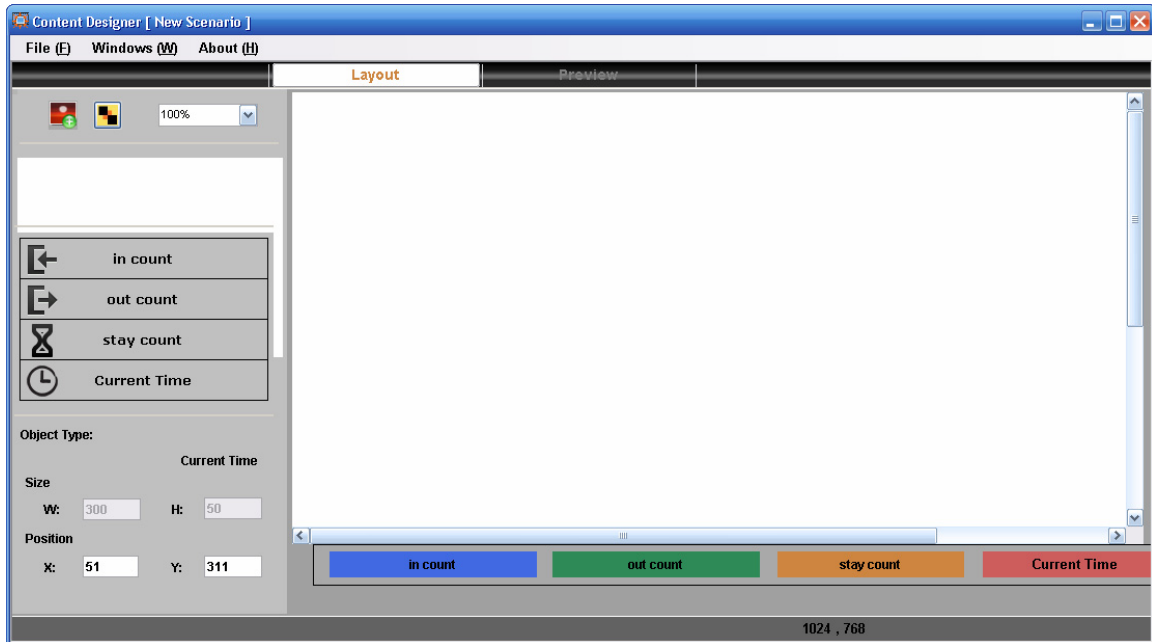
**Note:** The following resolutions for HDMI and VGA video outputs are available:

HDMI at 60 Hz	480p	720p	1080i	1080p
VGA at 60 Hz	640 x 480	1024 x 768	1280 x 768	1366 x 768

For HDMI 480p, select 720 x 480; for HDMI 720p, select 1280 x 720; for HDMI 1080p and 1080i, select 1920 x 1080.

---

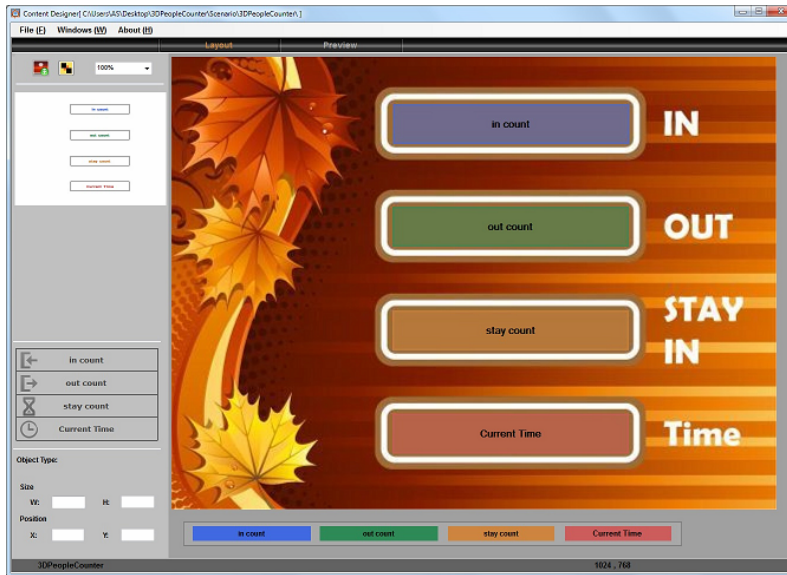
- On the top-left corner, click the **Background Image** icon  and click **Browse** to select a picture in PNG, JPEG or BMP format to be the background image.



**Note:** The In Count, Out Count, Stay Count and Current Time will be shown on the display monitor as numbers only. If you wish to label the counting data, you will need to add a background picture with text added where the data will be shown. For example:





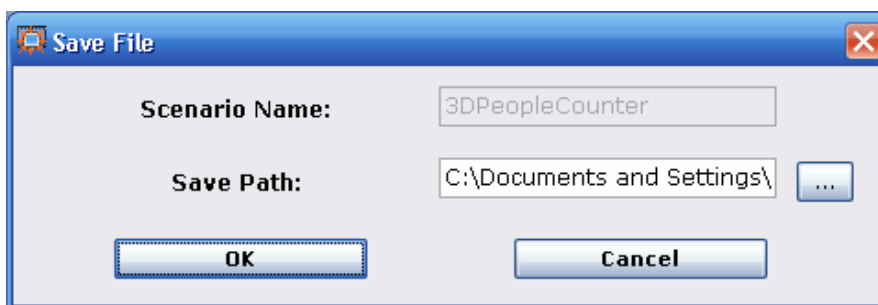
4. On the left side, click the **In Count**, **Out Count**, **Stay Count** and **Current Time** icons to add these objects to the main screen.



5. You can adjust the size and position of the objects using the **Size** and **Position** fields in the bottom-left corner or drag and drop the object boxes. To resize the box for Current Time, double-click the object and select from a list of pre-defined resolutions.

## 6.2 Exporting the Screen Layout to GV-3D People Counter

1. To preview the created screen layout, click **Preview**  on the main screen.
2. To save the screen layout, click **File** and select **Output Scenario**.
3. Click  to browse the location to save the screen layout. The screen layout will be saved in a folder named **3DPeopleCounter**.



4. In a SD card, create a folder named **Scenario** and copy the **3DPeopleCounter** folder to the **Scenario** folder.
5. Turn off the GV-3D People Counter, insert the SD card, and restart the GV-3D People Counter to apply the new screen layout.

## 7. Upgrading the Firmware

We will periodically release the updated firmware on the website. Follow the steps below to update firmware using an SD card.

1. Copy the firmware file to the root folder of an SD card and insert the SD card to the GV-3D People Counter. Make sure there is only one firmware file in the SD card.
2. Press **Menu** on the remote control to enter the OSD (On-Screen Display) menu.
3. Select the **Info** tab.
4. In the Firmware Update field, select **Yes** and press **OK** to begin updating firmware. The device will restart after the firmware upgrade is complete.

---

**Note:** To upgrade the firmware remotely through GV IP Device Utility, see *Chapter 6 GV-IP Device Utility* in the *GV-3D People Counter User's Manual*. To upgrade the firmware through GV-Web Report Lite, see *Chapter 4 The Web Interface* in the *GV-3D People Counter User's Manual*.

---