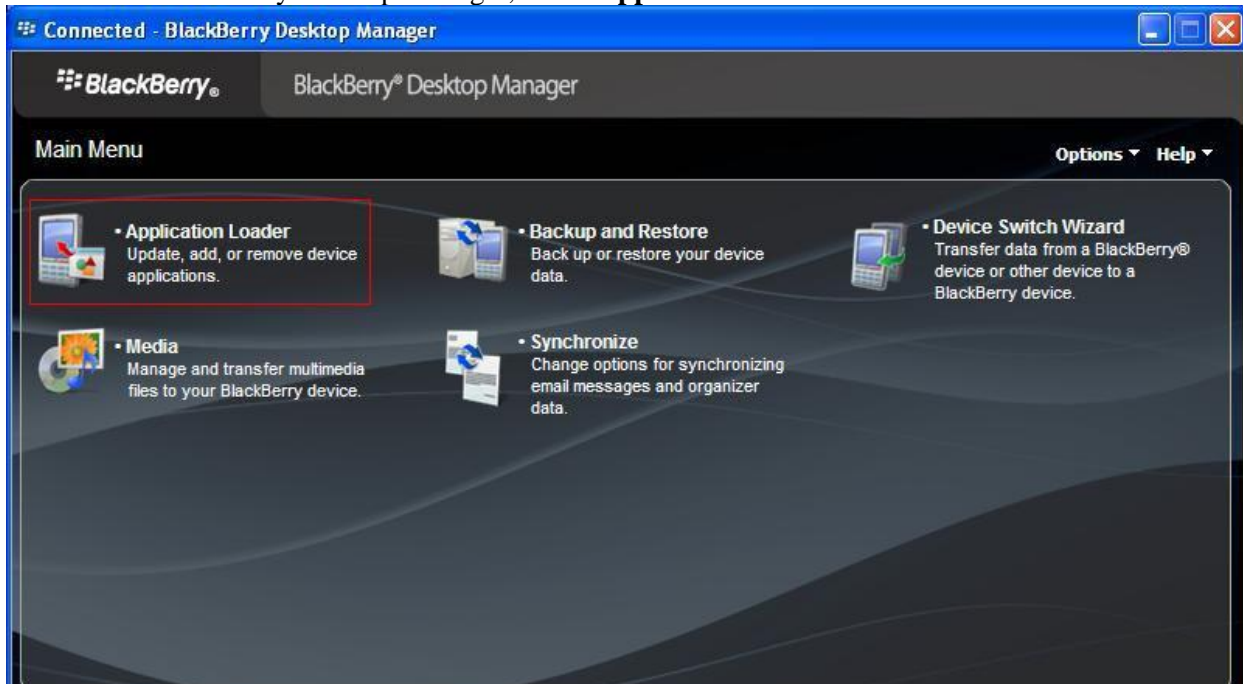


4.5.4 BBView Setup

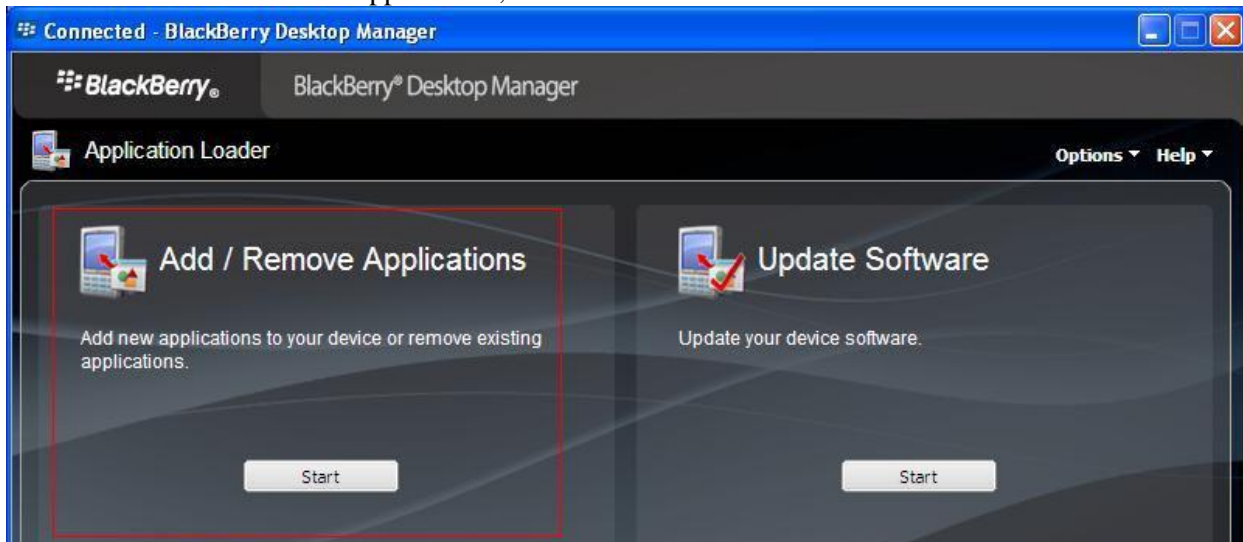
BBView is designed to view GeoVision DVR/NVR systems on Blackberry. It can be installed from GeoVision v8.4 Installation Disk or downloaded from http://www.geovision.com.tw/english/5_4.asp. BBView can then be synced to Blackberry manually via Blackberry Desktop Manager.

- ✓ Before connecting to a DVR, make sure that “**Create JPEG/GIF File(s)**” option is checked under *Webcam Server Setup* (Section 4.1)
- ✓ Blackberry Desktop Manager can be installed from the original Blackberry disk or downloaded from official Blackberry website at <http://us.blackberry.com/apps-software/>

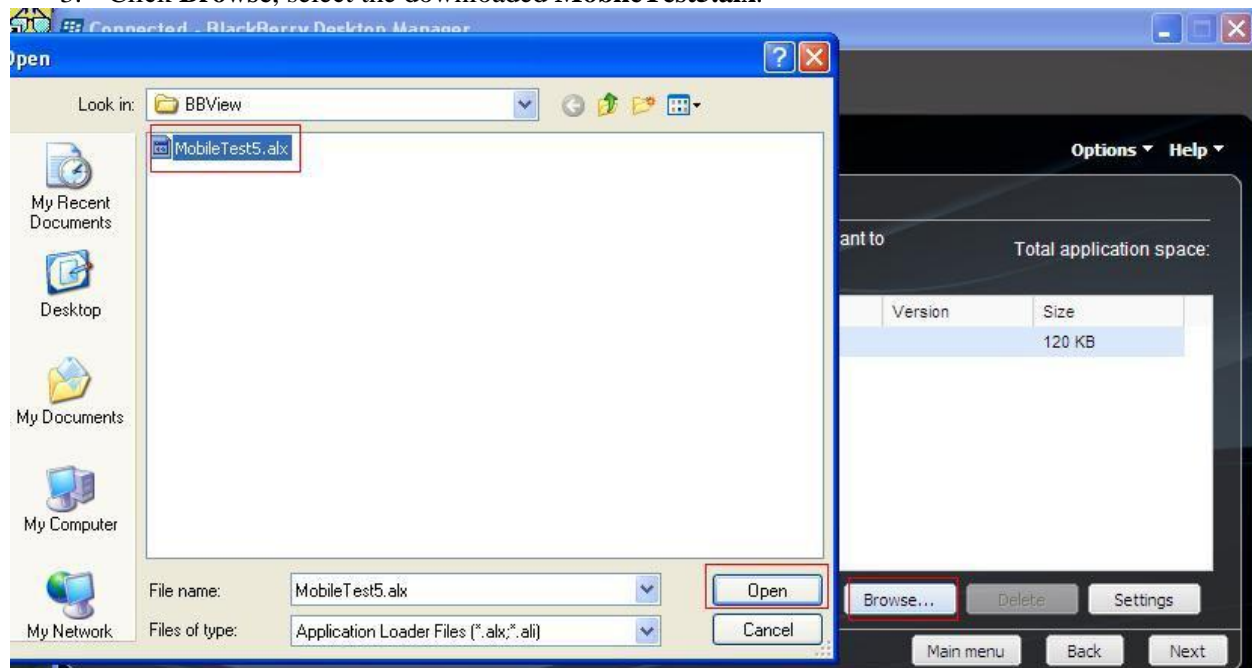
1. Run Blackberry Desktop Manager, select **Application Loader**.



2. Under Add/Remove Applications, click **Start**.



3. Click **Browse**, select the downloaded **MobileTest5.alx**.



4. Click **Next**.
5. Click **Finish**.
6. The synchronization is finished when “loading operation was successful” message appears.

